

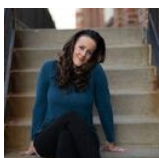


4381 Perth Circle  
Denver, CO 80249

MLS # 4443574



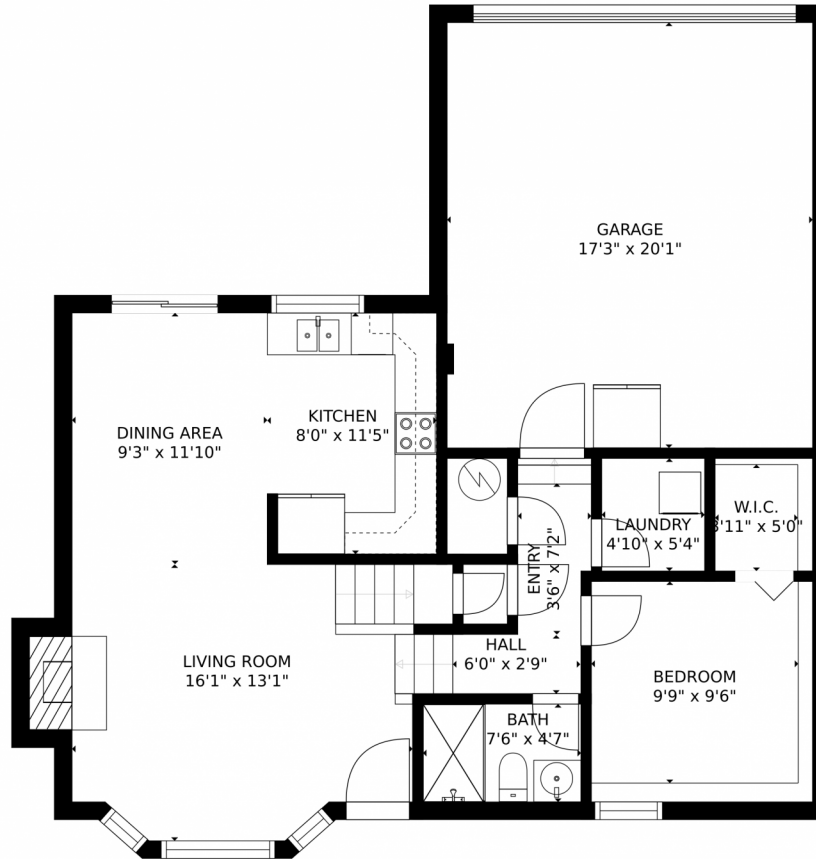
 Single Family  1224 SQFT



**Kimberly Regen**  
720-320-0733  
kim@tclipse97.net



4381 Perth Circle, Denver, CO 80249 – Main Level



GROSS INTERNAL AREA  
FLOOR 1: 711 sq. ft. FLOOR 2: 450 sq. ft.  
EXCLUDED AREAS: , GARAGE: 347 sq. ft.  
TOTAL: 1161 sq. ft.  
SIZES AND DIMENSIONS ARE APPROXIMATE, ACTUAL MAY VARY.

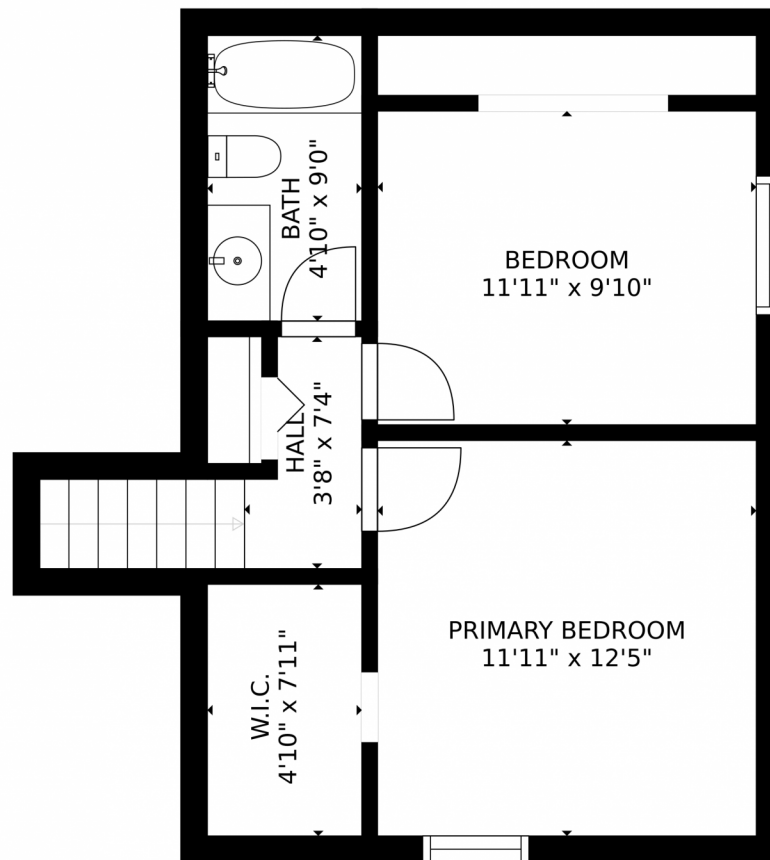


Disclaimer: Sizes and Dimensions are Approximate, Actual May Vary.



**Kimberly Regen**  
720-320-0733  
kim@tclipse97.net

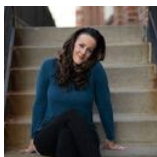




GROSS INTERNAL AREA  
FLOOR 1: 711 sq. ft. FLOOR 2: 450 sq. ft.  
EXCLUDED AREAS: , GARAGE: 347 sq. ft.  
TOTAL: 1161 sq. ft.  
SIZES AND DIMENSIONS ARE APPROXIMATE, ACTUAL MAY VARY.



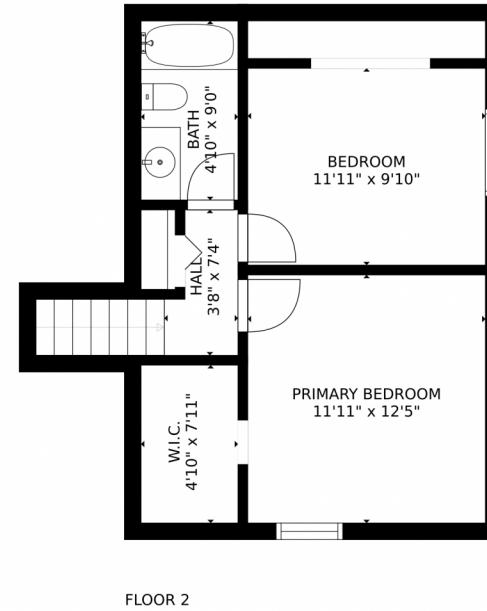
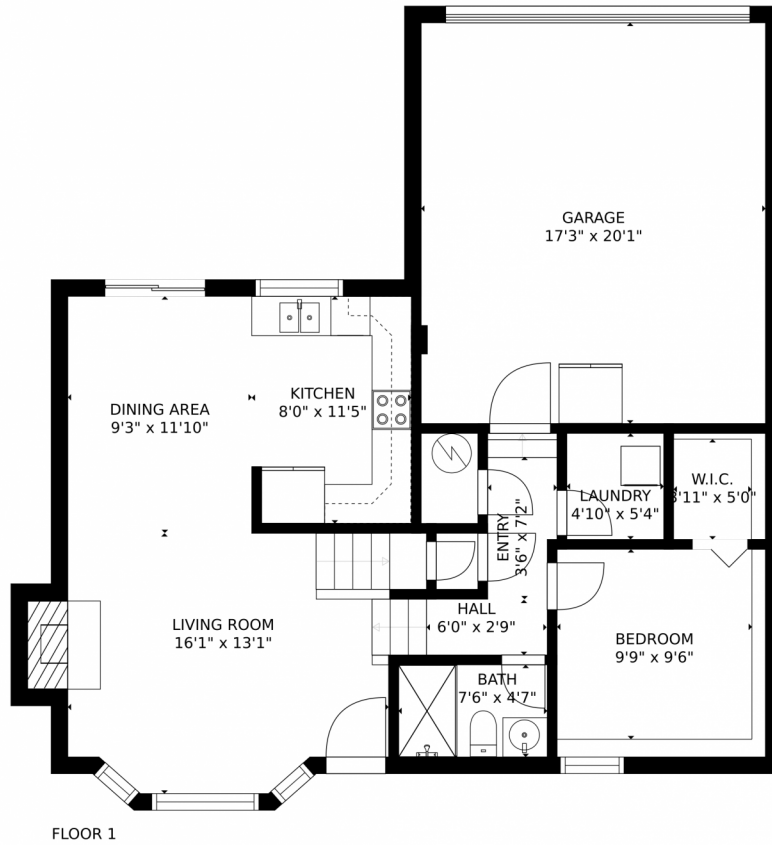
Disclaimer: Sizes and Dimensions are Approximate, Actual May Vary.



**Kimberly Regen**  
720-320-0733  
kim@tclipse97.net



# 4381 Perth Circle, Denver, CO 80249 – All Floors



GROSS INTERNAL AREA  
FLOOR 1: 711 sq. ft. FLOOR 2: 450 sq. ft.  
EXCLUDED AREAS: GARAGE: 347 sq. ft.  
TOTAL: 1161 sq. ft.  
SIZES AND DIMENSIONS ARE APPROXIMATE, ACTUAL MAY VARY.



Disclaimer: Sizes and Dimensions are Approximate, Actual May Vary.



**Kimberly Regen**  
720-320-0733  
kim@tclipse97.net



Scan code  
for more  
property  
details

