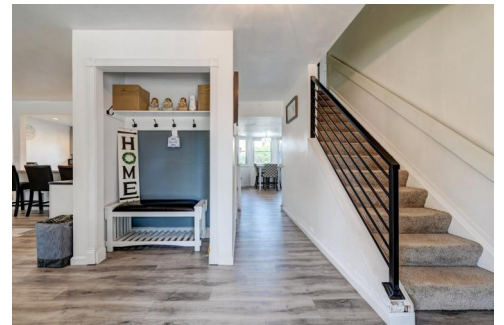


6896 Wyman Way  
Westminster, CO 80030



Single Family



2061 SQFT



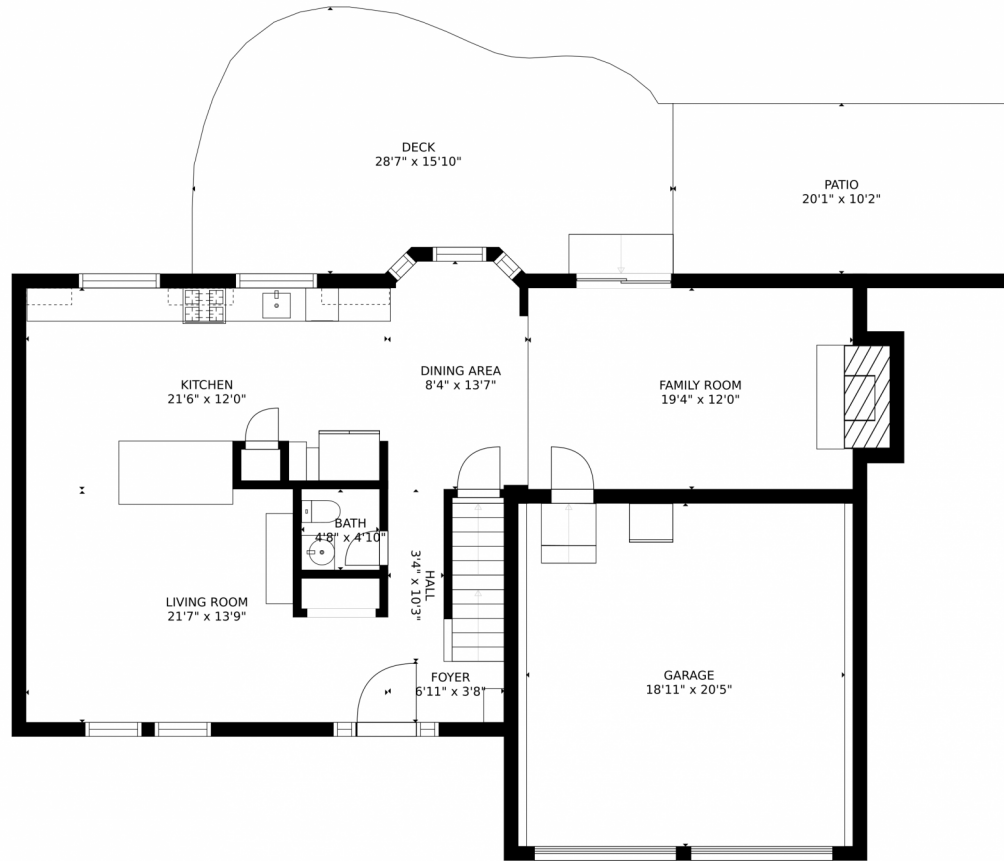
**Sarah Yang**  
720-384-5646  
sarah.yang@cbrealty.com



Scan code  
for more  
property  
details



6896 Wyman Way, Westminster, CO 80030 – 1st Floor



GROSS INTERNAL AREA  
FLOOR 1: 729 sq. ft., FLOOR 2: 1009 sq. ft.  
FLOOR 3: 945 sq. ft., EXCLUDED AREAS:  
GARAGE: 407 sq. ft., DECK: 377 sq. ft.  
PATIO: 204 sq. ft.  
TOTAL: 2682 sq. ft.  
SIZES AND DIMENSIONS ARE APPROXIMATE, ACTUAL MAY VARY.



Disclaimer: Sizes and Dimensions are Approximate, Actual May Vary.

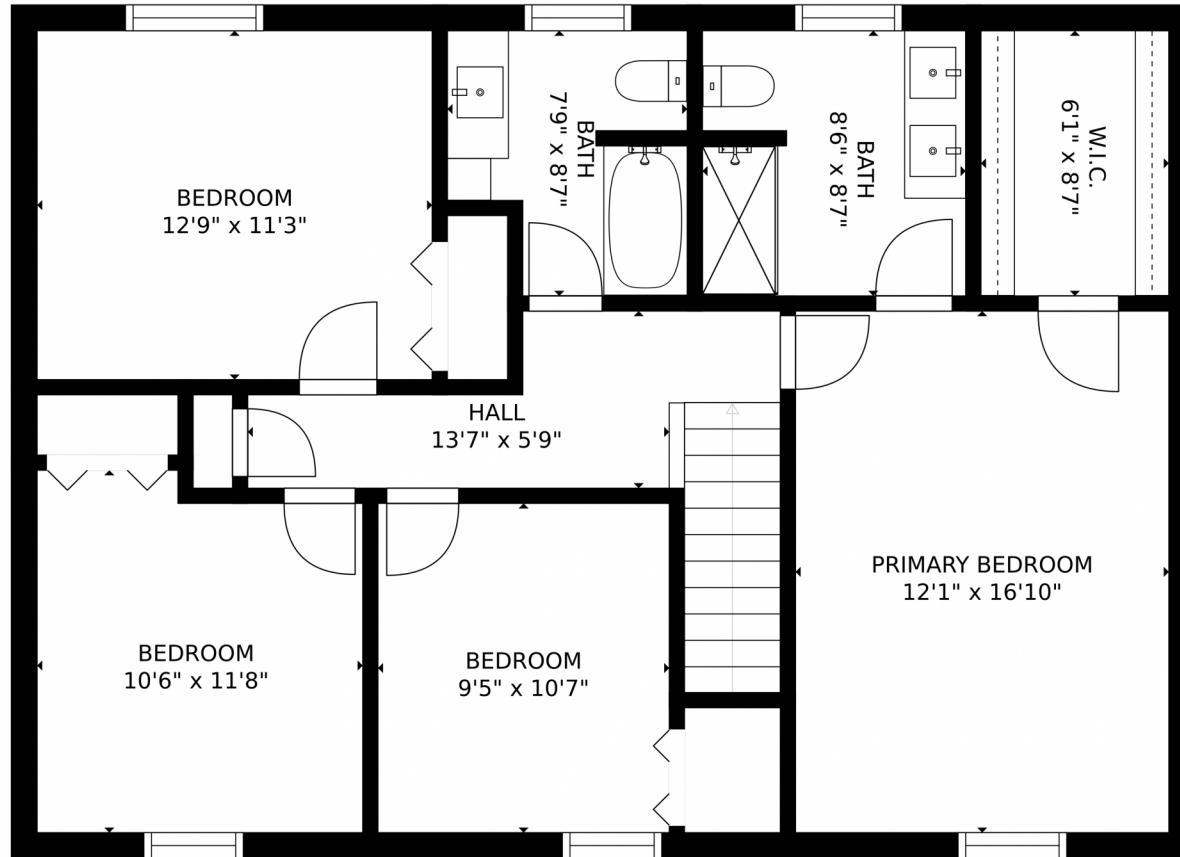


**Sarah Yang**  
720-384-5646  
sarah.yang@cbrealty.com



Scan code  
for more  
property  
details





GROSS INTERNAL AREA  
FLOOR 1: 729 sq. ft., FLOOR 2: 1009 sq. ft.  
FLOOR 3: 945 sq. ft., EXCLUDED AREAS:  
GARAGE: 407 sq. ft., DECK: 377 sq. ft.  
PATIO: 204 sq. ft.  
TOTAL: 2682 sq. ft.  
SIZES AND DIMENSIONS ARE APPROXIMATE, ACTUAL MAY VARY.

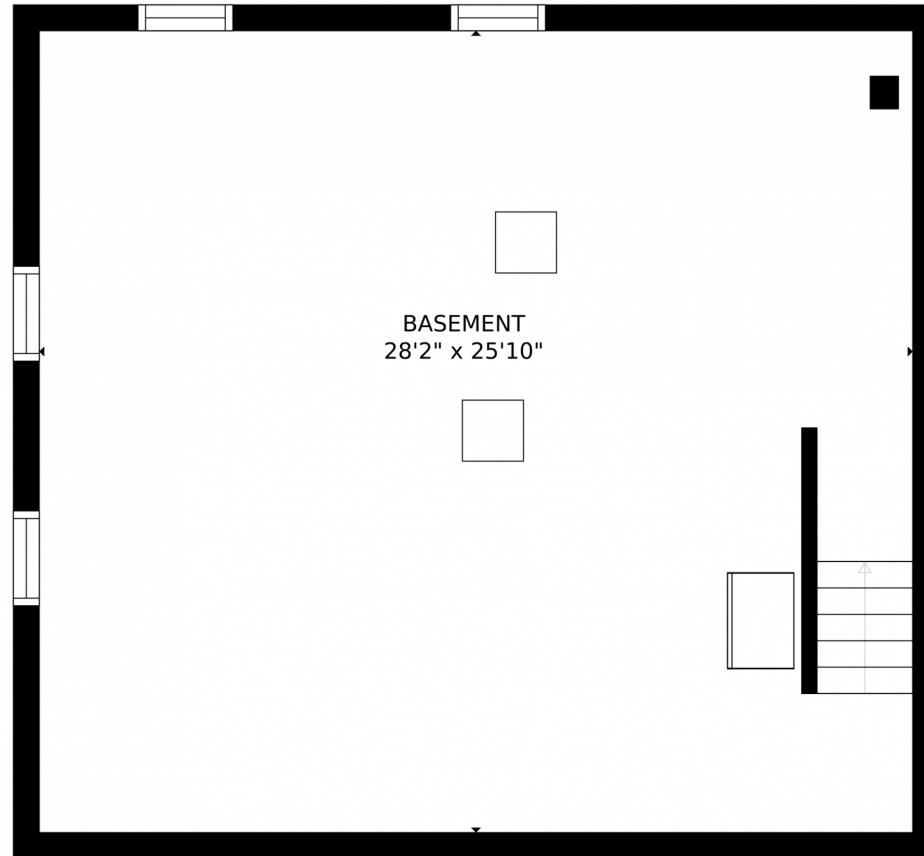


Disclaimer: Sizes and Dimensions are Approximate, Actual May Vary.



**Sarah Yang**  
720-384-5646  
sarah.yang@cbrealty.com





GROSS INTERNAL AREA  
FLOOR 1: 729 sq. ft., FLOOR 2: 1009 sq. ft.  
FLOOR 3: 945 sq. ft., EXCLUDED AREAS:  
GARAGE: 407 sq. ft., DECK: 377 sq. ft.  
PATIO: 204 sq. ft.  
TOTAL: 2682 sq. ft.  
SIZES AND DIMENSIONS ARE APPROXIMATE, ACTUAL MAY VARY.

Disclaimer: Sizes and Dimensions are Approximate, Actual May Vary.



**Sarah Yang**  
720-384-5646  
sarah.yang@cbrealty.com





# 6896 Wyman Way, Westminster, CO 80030 – All Floors



GROSS INTERNAL AREA  
FLOOR 1: 729 sq. ft., FLOOR 2: 1009 sq. ft.  
FLOOR 3: 945 sq. ft., EXCLUDED AREAS:  
GARAGE: 407 sq. ft., DECK: 377 sq. ft.  
PATIO: 204 sq. ft.  
TOTAL: 2682 sq. ft.  
SIZES AND DIMENSIONS ARE APPROXIMATE, ACTUAL MAY VARY.



Disclaimer: Sizes and Dimensions are Approximate, Actual May Vary.



**Sarah Yang**  
720-384-5646  
sarah.yang@cbrealty.com

