




 Single Family  3388 SQFT  3 Beds  2 Baths  2 Car  0.22 Acre

PROPERTY DETAILS

Welcome to this move-in ready Ranch-style home boasting 3388 total sq ft. An open concept located in the desirable Castlewood Ranch. Featuring newer roof, windows and flooring. New on trend interior paint and new exterior paint, new hot water heater. The Kitchen struts newer stainless steel appliances, pantry and updated cabinets. A nice addition to the kitchen is the spacious dining area that also has bay windows and extends out to the full length back deck with stunning mountain views. This home showcases one of the largest lots in the neighborhood with a retreat of 9801 sq ft. perfect for all of your outdoor activities. With low HOA fees, this home is a delight and just waiting for your arrival!



Stephanie Fellhauer
720-692-4633
stephaniefelhauer@yahoo.com



5971 Randolph Avenue, Castle Rock, CO 80104 – All Floors



GROSS INTERNAL AREA
FLOOR 1: 1553 sq. ft., FLOOR 2: 1609 sq. ft.
EXCLUDED AREAS: , GARAGE: 369 sq. ft.
TOTAL: 3162 sq. ft.
SIZES AND DIMENSIONS ARE APPROXIMATE, ACTUAL MAY VARY.

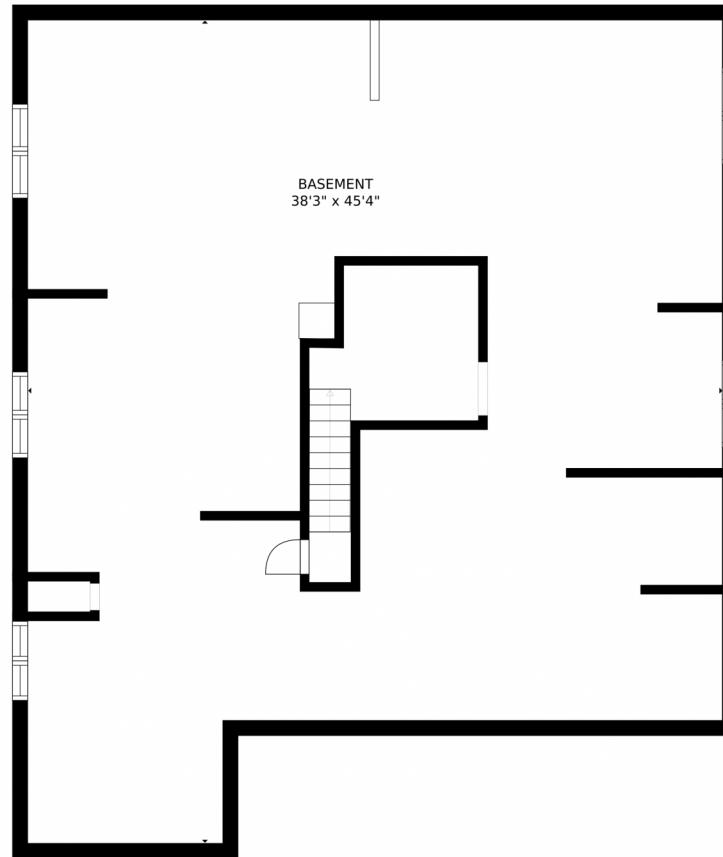


Disclaimer: Sizes and Dimensions are Approximate, Actual May Vary.



Stephanie Fellhauer
720-692-4633
stephaniefelhauer@yahoo.com





GROSS INTERNAL AREA
FLOOR 1: 1553 sq. ft, FLOOR 2: 1609 sq. ft
EXCLUDED AREAS: , GARAGE: 369 sq. ft
TOTAL: 3162 sq. ft
SIZES AND DIMENSIONS ARE APPROXIMATE, ACTUAL MAY VARY.



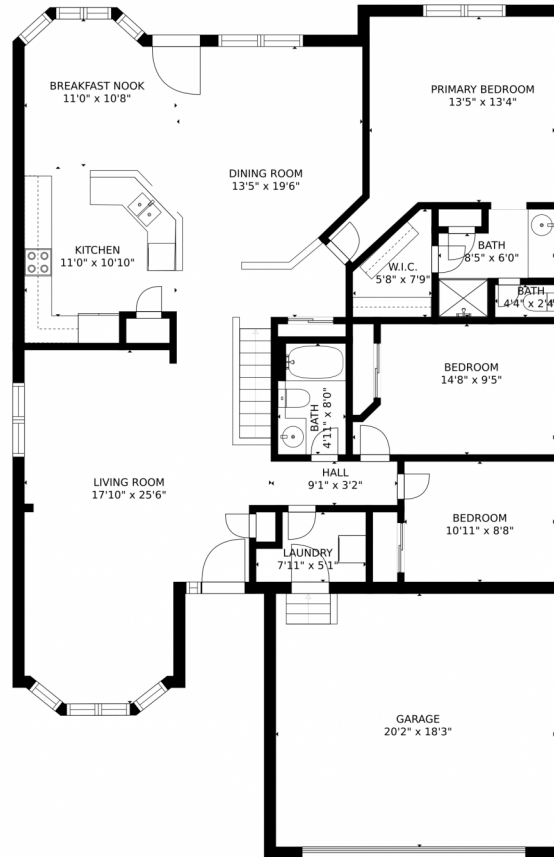
Disclaimer: Sizes and Dimensions are Approximate, Actual May Vary.



Stephanie Fellhauer
720-692-4633
stephaniefelhauer@yahoo.com



5971 Randolph Avenue, Castle Rock, CO 80104 – Main Floor



GROSS INTERNAL AREA
FLOOR 1: 1553 sq. ft., FLOOR 2: 1609 sq. ft.
EXCLUDED AREAS: , GARAGE: 369 sq. ft.
TOTAL: 3162 sq. ft.
SIZES AND DIMENSIONS ARE APPROXIMATE, ACTUAL MAY VARY.



Disclaimer: Sizes and Dimensions are Approximate, Actual May Vary.



Stephanie Fellhauer
720-692-4633
stephaniefelhauer@yahoo.com

