



748 Orchard Court
 Louisville, CO 80027
 COMMUNITY: Meadows at Coal Creek

MLS # IR968435
 PRICE \$1,245,000

Beautiful energy efficient 5 bdrm 3.5 bath 2 story with great yard & 3 car garage



Single Family



4058 SQFT



5 Beds



3/1 Baths



3 Car



0.18 Acre

PROPERTY DETAILS

Beautifully upgraded 5 bedroom 3 1/2 bath 2 story in the Meadows at Coal Creek. Gorgeous kitchen with cherry cabinetry with pull outs and other custom features, Cianitus slab granite counter tops, under mount sink, stainless steel appliances and under cabinet lighting. Spacious family room off kitchen with built-in shelving, gas fireplace, game storage closet and rough in for a wet bar . 4 large bedrooms upstairs. Primary bedroom has big walk in closet and upgraded 5 piece bath with cherry cabinetry, granite counter tops and separate Jacuzzi jetted tub. Finished basement has big recreation room, 5th bedroom, 3/4 bath, 13 x 8 laundry room and 20 x 9 unfinished storage room . Energy efficient home with 2 x 6 construction, Solar PV, r-60 ceiling insulation, dual heating system with heat pump (powered by solar) and gas forced air back up system. Wonderful yard with large trees, deck and patio. Great location with easy access to Highway 36, shopping and down town Louisville. Area park 2 blocks to south . Heritage park with ball field 1/4 mile east ! Easy access to city bike paths.
<https://v1tours.com/listing/42173>



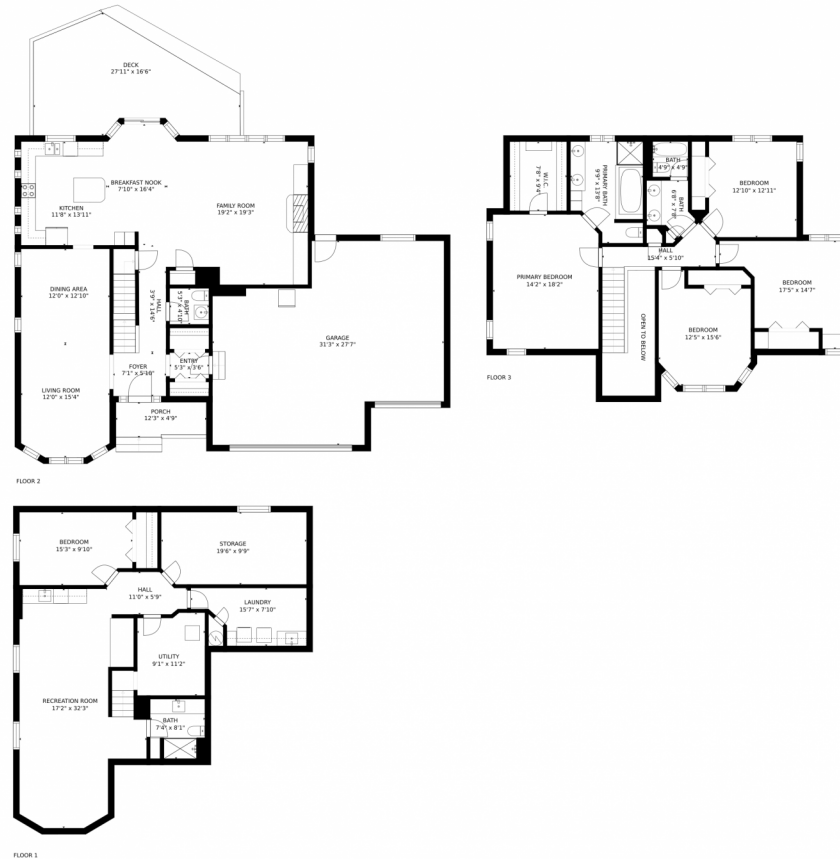
Pete Abel
 303-594-8319
 peteabelsold4u@boulderco.com
<https://www.peteabel.com>



Scan code
 for more
 property
 details



748 Orchard Court, Louisville, CO 80027 – All Levels



GROSS INTERNAL AREA
FLOOR 1: 1186 sq. ft. FLOOR 2: 1240 sq. ft.
FLOOR 3: 1244 sq. ft. EXCLUDED AREAS:
GARAGE: 712 sq. ft. DECK: 323 sq. ft.
PORCH: 56 sq. ft.
TOTAL: 3669 sq. ft.
SIZES AND DIMENSIONS ARE APPROXIMATE, ACTUAL MAY VARY.



Disclaimer: Sizes and Dimensions are Approximate, Actual May Vary.



Pete Abel
303-594-8319
peteabelsold4u@boulderco.com
<https://www.peteabel.com>

