



1718 Irving Street, 2
Denver, CO 80204

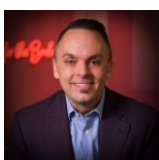
MLS # 6731867
PRICE \$748,374



 Townhouse  1527 SQFT  2 Beds  2/1 Baths  2 Car

PROPERTY DETAILS

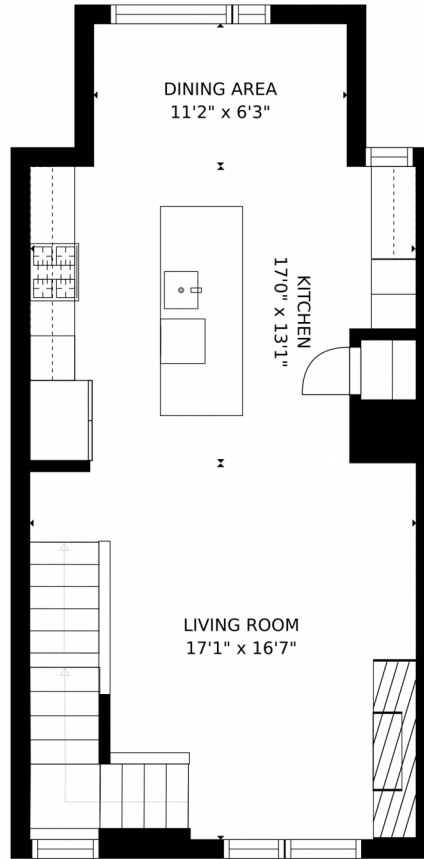
Just about the best finish quality you can find for a home in this area and price-point. Thoroughly modern inside and out, this contemporary floorplan and design palette will knock your socks off. Exaggerated ceiling heights and light-filled rooms make this comfortable home feel large and flexible.



Matt Leprino
303-900-3123
matt@remingo.com



1718 Irving Street, 2, Denver, CO 80204 – Main Level



GROSS INTERNAL AREA
FLOOR 1: 156 sq. ft., FLOOR 2: 578 sq. ft.
FLOOR 3: 578 sq. ft., FLOOR 4: 58 sq. ft.
EXCLUDED AREAS: , GARAGE: 315 sq. ft.
PORCH: 11 sq. ft., DECK: 388 sq. ft.
TOTAL: 1369 sq. ft.
SIZES AND DIMENSIONS ARE APPROXIMATE, ACTUAL MAY VARY.

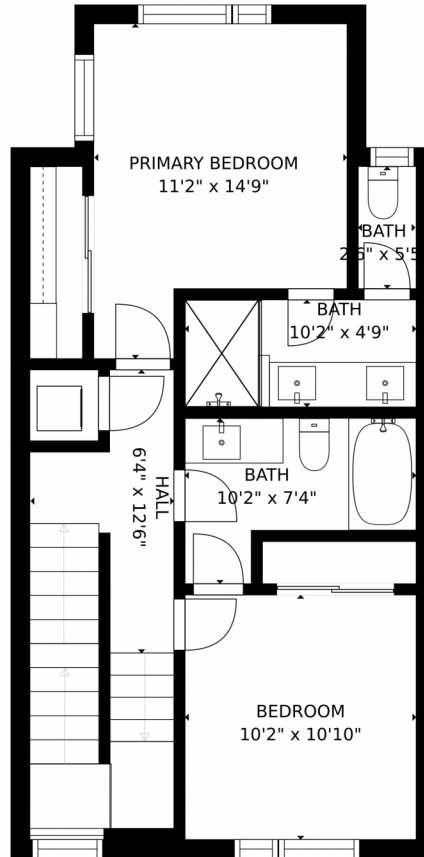


Disclaimer: Sizes and Dimensions are Approximate, Actual May Vary.



Matt Leprino
303-900-3123
matt@remingo.com





GROSS INTERNAL AREA
FLOOR 1: 156 sq. ft. FLOOR 2: 578 sq. ft.
FLOOR 3: 578 sq. ft. FLOOR 4: 58 sq. ft.
EXCLUDED AREAS: GARAGE: 315 sq. ft.
PORCH: 11 sq. ft. DECK: 388 sq. ft.
TOTAL: 1369 sq. ft.
SIZES AND DIMENSIONS ARE APPROXIMATE, ACTUAL MAY VARY.



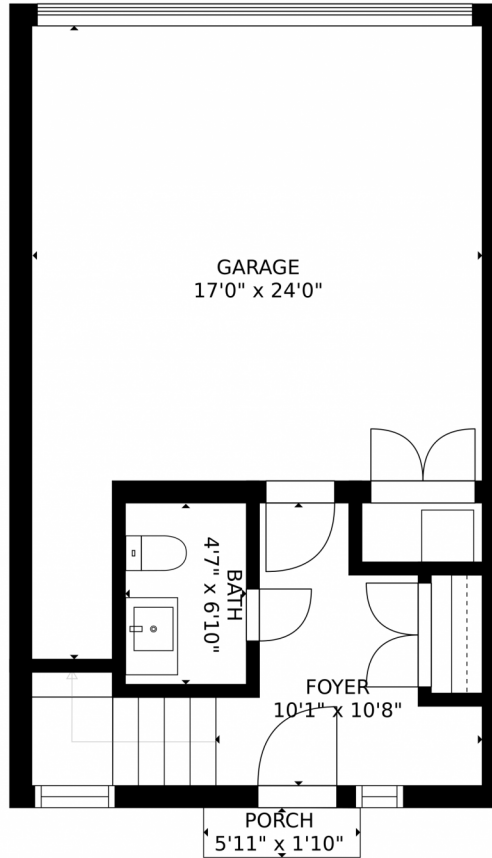
Disclaimer: Sizes and Dimensions are Approximate, Actual May Vary.



Matt Leprino
303-900-3123
matt@remingo.com



1718 Irving Street, 2, Denver, CO 80204 – Lower Level



GROSS INTERNAL AREA
FLOOR 1: 156 sq. ft. FLOOR 2: 578 sq. ft.
FLOOR 3: 578 sq. ft. FLOOR 4: 58 sq. ft.
EXCLUDED AREAS: GARAGE: 315 sq. ft.
PORCH: 11 sq. ft. DECK: 388 sq. ft.
TOTAL: 1369 sq. ft.
SIZES AND DIMENSIONS ARE APPROXIMATE, ACTUAL MAY VARY.



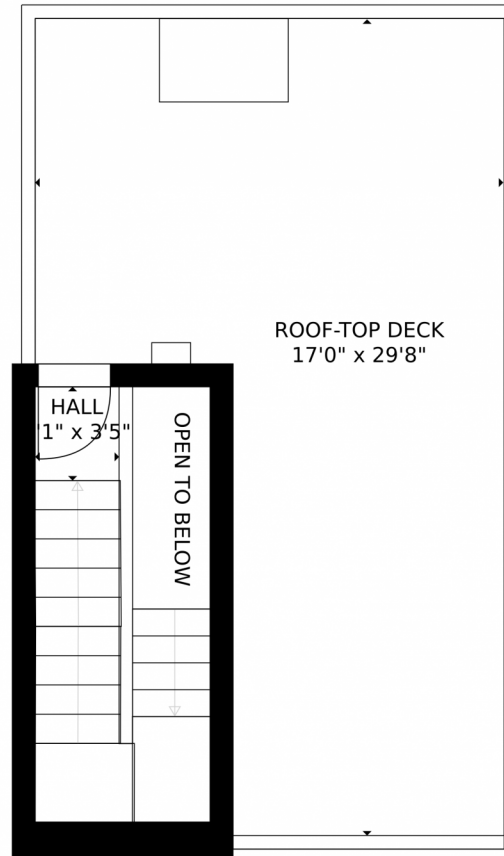
Disclaimer: Sizes and Dimensions are Approximate, Actual May Vary.



Matt Leprino
303-900-3123
matt@remingo.com



1718 Irving Street, 2, Denver, CO 80204 – Rooftop Deck



GROSS INTERNAL AREA
FLOOR 1: 156 sq. ft., FLOOR 2: 578 sq. ft.
FLOOR 3: 578 sq. ft., FLOOR 4: 58 sq. ft.
EXCLUDED AREAS: , GARAGE: 315 sq. ft.
PORCH: 11 sq. ft., DECK: 388 sq. ft.
TOTAL: 1369 sq. ft.
SIZES AND DIMENSIONS ARE APPROXIMATE, ACTUAL MAY VARY.

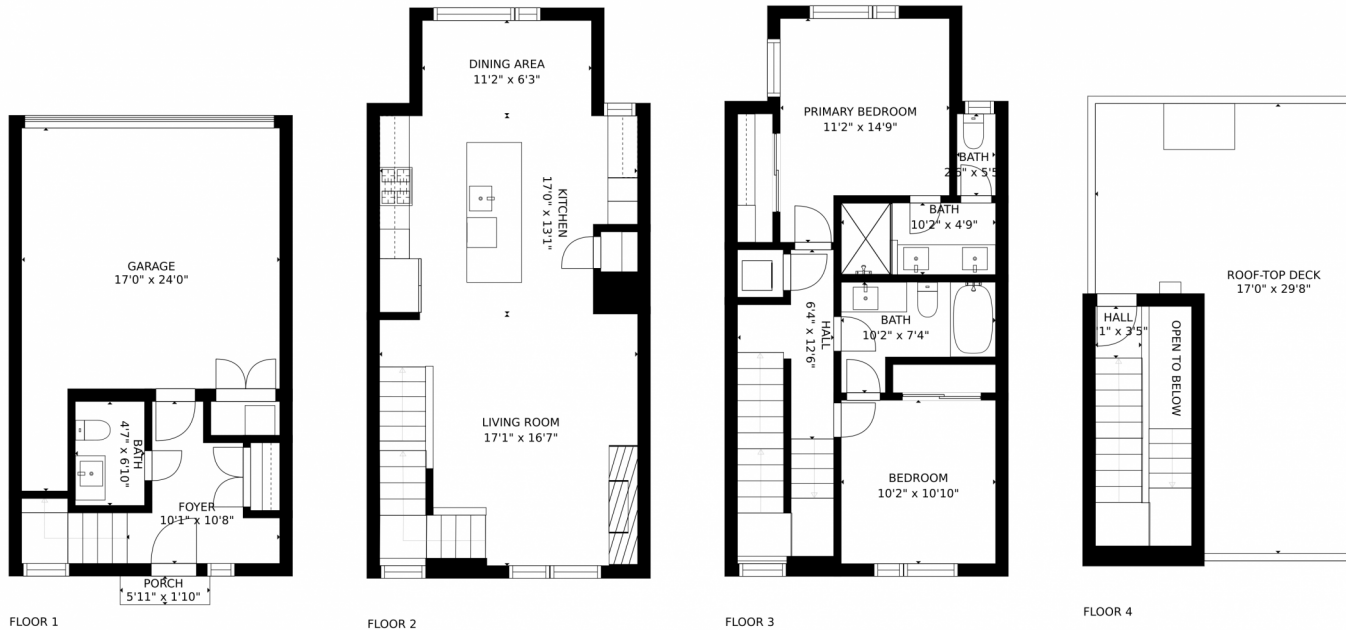
Disclaimer: Sizes and Dimensions are Approximate, Actual May Vary.



Matt Leprino
303-900-3123
matt@remingo.com



1718 Irving Street, 2, Denver, CO 80204 – All Levels



GROSS INTERNAL AREA
 FLOOR 1: 156 sq. ft. FLOOR 2: 578 sq. ft.
 FLOOR 3: 578 sq. ft. FLOOR 4: 58 sq. ft.
 EXCLUDED AREAS: GARAGE: 315 sq. ft.
 PORCH: 11 sq. ft. DECK: 388 sq. ft.
 TOTAL: 1369 sq. ft.
 SIZES AND DIMENSIONS ARE APPROXIMATE, ACTUAL MAY VARY.



Disclaimer: Sizes and Dimensions are Approximate, Actual May Vary.



Matt Leprino
 303-900-3123
 matt@remingo.com

