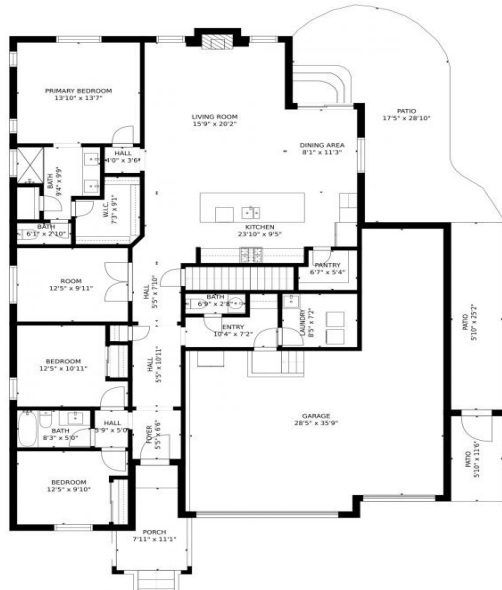




5782 Saddle Skirt Street
Parker, CO 80134

5782 Saddle Skirt Street, Parker, CO 80134 - Main

5782 Saddle Skirt Street, Parker, CO 80134 - Lower Level



5782 Saddle Skirt Street, Parker, CO 80134 - All Levels



Single Family



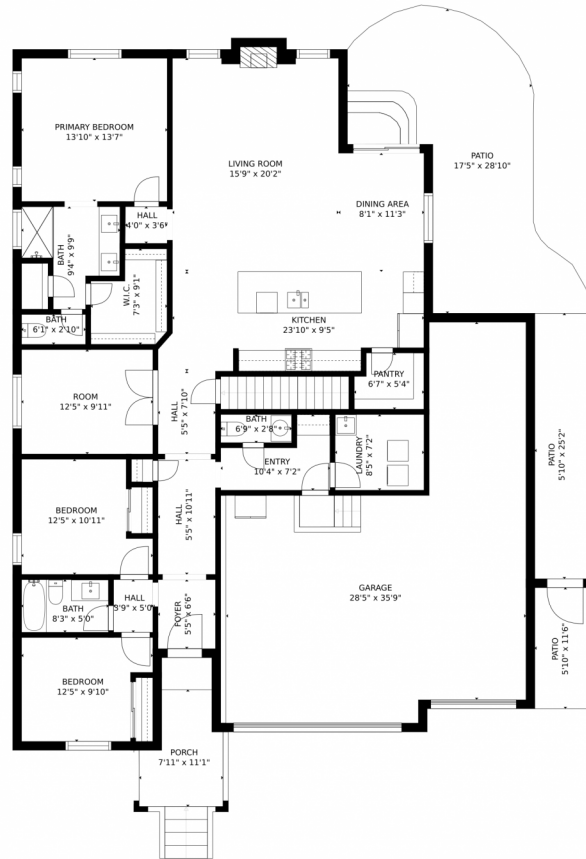
2992 SQFT

Alexis Shultz
303-957-8897
alexisshultz@outlook.com



Scan code
for more
property
details





GROSS INTERNAL AREA
FLOOR 1: 1134 sq. ft. FLOOR 2: 1876 sq. ft.
EXCLUDED AREAS: , REDUCED HEADROOM BELOW 1.5M: 679 sq. ft
GARAGE: 751 sq. ft. PATIO: 598 sq. ft
PORCH: 86 sq. ft
TOTAL: 3009 sq. ft
SIZES AND DIMENSIONS ARE APPROXIMATE, ACTUAL MAY VARY.

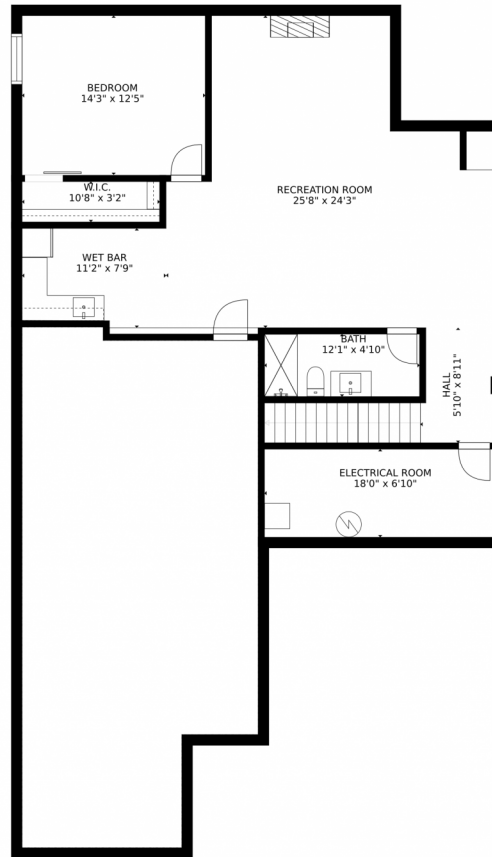


Disclaimer: Sizes and Dimensions are Approximate, Actual May Vary.

Alexis Shultz
303-957-8897
alexisshultz@outlook.com



5782 Saddle Skirt Street, Parker, CO 80134 – Lower Level



GROSS INTERNAL AREA
FLOOR 1: 1134 sq. ft. FLOOR 2: 1876 sq. ft.
EXCLUDED AREAS: , REDUCED HEADROOM BELOW 1.5M: 679 sq. ft
GARAGE: 751 sq. ft. PATIO: 598 sq. ft
PORCH: 86 sq. ft
TOTAL: 3009 sq. ft
SIZES AND DIMENSIONS ARE APPROXIMATE, ACTUAL MAY VARY.

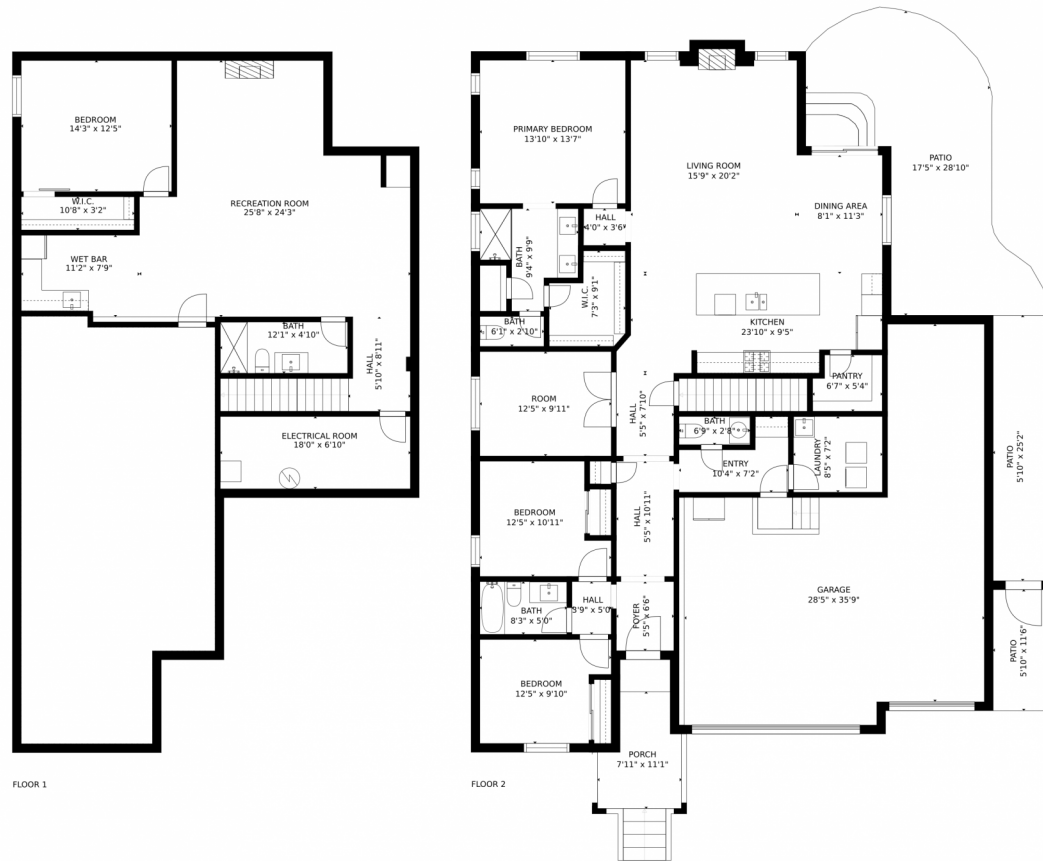


Disclaimer: Sizes and Dimensions are Approximate, Actual May Vary.

Alexis Shultz
303-957-8897
alexisshultz@outlook.com



5782 Saddle Skirt Street, Parker, CO 80134 – All Levels



GROSS INTERNAL AREA
FLOOR 1: 1134 sq. ft. FLOOR 2: 1876 sq. ft.
EXCLUDED AREAS: , REDUCED HEADROOM BELOW 1.5M: 679 sq. ft.
GARAGE: 751 sq. ft. PATIO: 598 sq. ft.
PORCH: 86 sq. ft.
TOTAL: 3009 sq. ft.
SIZES AND DIMENSIONS ARE APPROXIMATE, ACTUAL MAY VARY.



Disclaimer: Sizes and Dimensions are Approximate, Actual May Vary.

Alexis Shultz
303-957-8897
alexisshultz@outlook.com

