



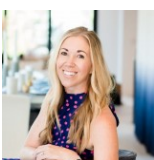
3010 Ash Street  
Denver, CO 80207



Single Family



3632 SQFT



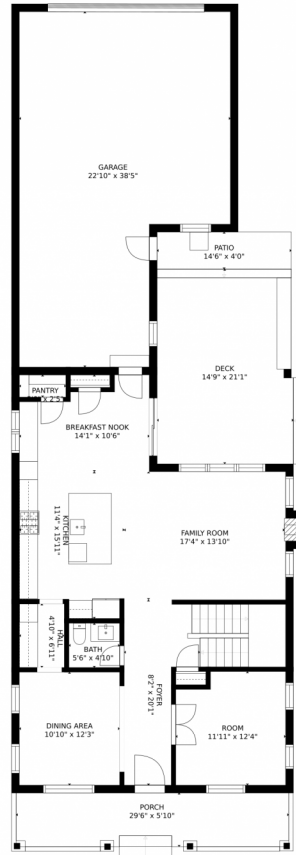
**Brianna Cosgriff**  
303-827-6361  
bcosgriff@homeswithbrie.com  
<http://www.homeswithbrie.com>



Scan code  
for more  
property  
details



# 3010 Ash Street, Denver, CO 80207 – Main Level



GROSS INTERNAL AREA  
FLOOR 1: 1040 sq. ft, FLOOR 2: 1128 sq. ft  
FLOOR 3: 1135 sq. ft, EXCLUDED AREAS:  
GARAGE: 742 sq. ft, DECK: 308 sq. ft  
PATIO: 58 sq. ft, PORCH: 165 sq. ft  
BALCONY: 142 sq. ft  
TOTAL: 3303 sq. ft  
SIZES AND DIMENSIONS ARE APPROXIMATE, ACTUAL MAY VARY.



Disclaimer: Sizes and Dimensions are Approximate, Actual May Vary.

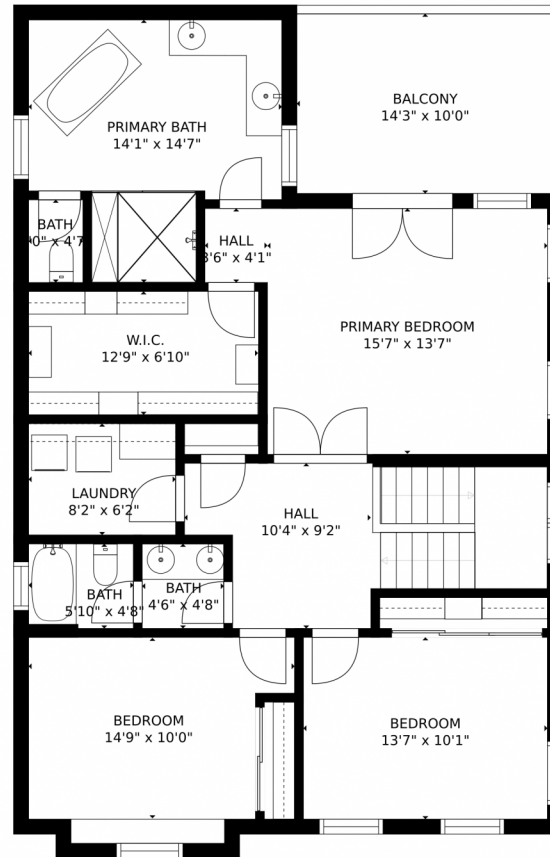


**Brianna Cosgriff**  
303-827-6361  
bcosgriff@homeswithbrie.com  
<http://www.homeswithbrie.com>



Scan code  
for more  
property  
details

# 3010 Ash Street, Denver, CO 80207 – Upper Level



GROSS INTERNAL AREA  
FLOOR 1: 1040 sq. ft. FLOOR 2: 1128 sq. ft.  
FLOOR 3: 1135 sq. ft. EXCLUDED AREAS:  
GARAGE: 742 sq. ft. DECK: 308 sq. ft.  
PATIO: 58 sq. ft. PORCH: 165 sq. ft.  
BALCONY: 142 sq. ft.  
TOTAL: 3303 sq. ft.  
SIZES AND DIMENSIONS ARE APPROXIMATE, ACTUAL MAY VARY.



Disclaimer: Sizes and Dimensions are Approximate, Actual May Vary.

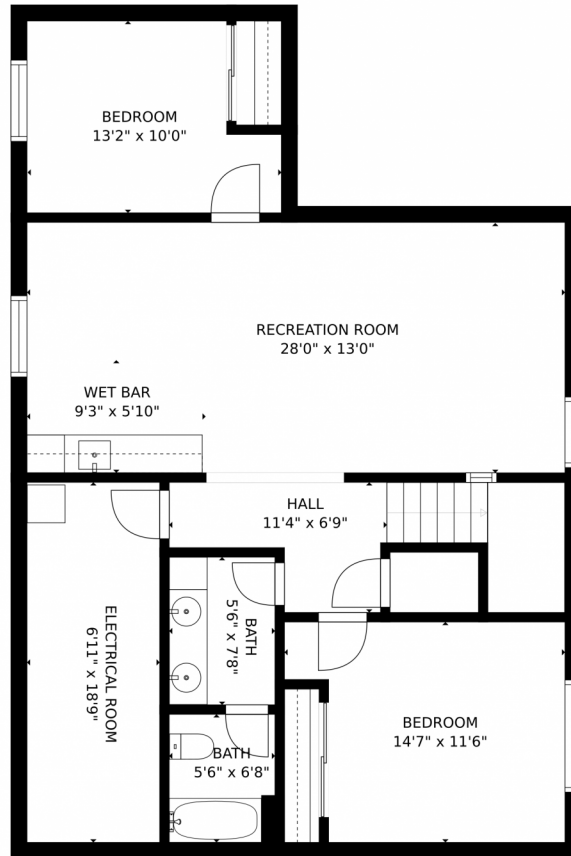


**Brianna Cosgriff**  
303-827-6361  
bcosgriff@homeswithbrie.com  
<http://www.homeswithbrie.com>





# 3010 Ash Street, Denver, CO 80207 – Lower Level



GROSS INTERNAL AREA  
FLOOR 1: 1040 sq. ft. FLOOR 2: 1128 sq. ft.  
FLOOR 3: 1135 sq. ft. EXCLUDED AREAS:  
GARAGE: 742 sq. ft. DECK: 308 sq. ft.  
PATIO: 58 sq. ft. PORCH: 165 sq. ft.  
BALCONY: 142 sq. ft.  
TOTAL: 3303 sq. ft.  
SIZES AND DIMENSIONS ARE APPROXIMATE, ACTUAL MAY VARY.



Disclaimer: Sizes and Dimensions are Approximate, Actual May Vary.



**Brianna Cosgriff**  
303-827-6361  
bcosgriff@homeswithbrie.com  
<http://www.homeswithbrie.com>



# 3010 Ash Street, Denver, CO 80207 – All Levels



GROSS INTERNAL AREA  
 FLOOR 1: 1040 sq. ft, FLOOR 2: 1128 sq. ft  
 FLOOR 3: 1135 sq. ft, EXCLUDED AREAS:  
 GARAGE: 742 sq. ft, DECK: 308 sq. ft  
 PATIO: 58 sq. ft, PORCH: 165 sq. ft  
 BALCONY: 142 sq. ft  
 TOTAL: 3303 sq. ft  
 SIZES AND DIMENSIONS ARE APPROXIMATE, ACTUAL MAY VARY.



Disclaimer: Sizes and Dimensions are Approximate, Actual May Vary.



**Brianna Cosgriff**  
 303-827-6361  
 bcosgriff@homeswithbrie.com  
<http://www.homeswithbrie.com>



Scan code  
 for more  
 property  
 details

