



2045 S xavier Street
 Denver, CO 80219
 COMMUNITY: Harvey Park

MLS # 8060068
 PRICE \$725,000



Single Family



2202 SQFT



4 Beds



3 Baths



1 Car



0.17 Acre

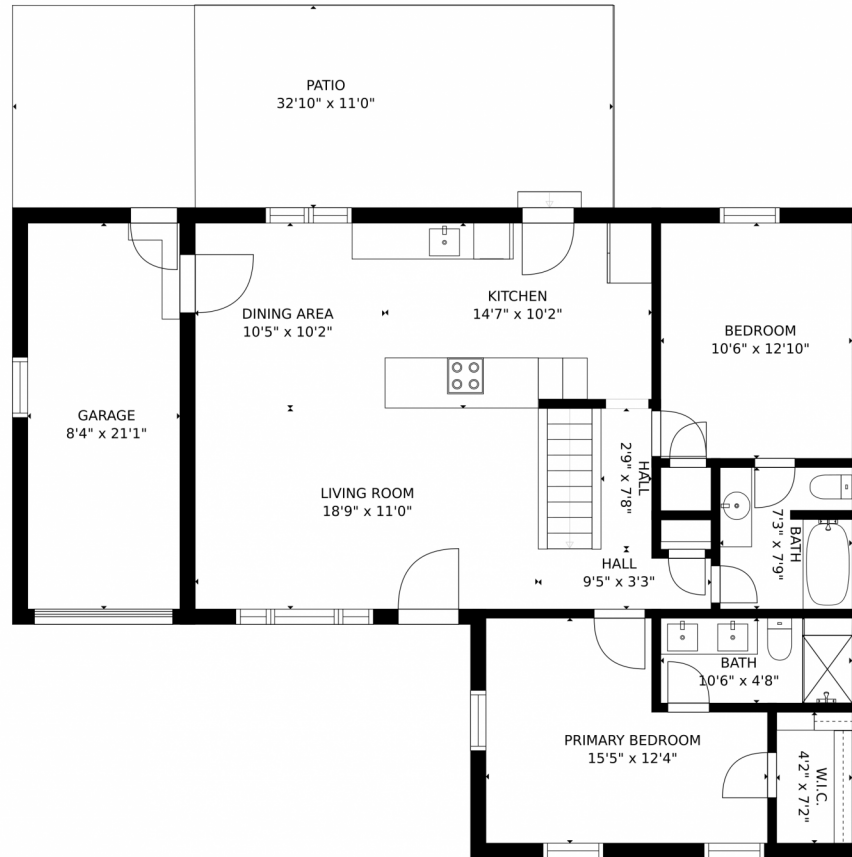
PROPERTY DETAILS

This gorgeous quiet brick ranch is a 3 block walk to Lake Harvey and 10 minutes to downtown and has been completely remodeled inside and out. Kitchen has been completely opened up to give the house that real inviting feel. New cabinets, countertops, and stainless steel appliances adorn this professional kitchen, as well as an attached dining room and living room. Fantastic hardwood floors throughout. A true master bedroom, master bathroom and walk-in closet will give you enough space in the morning to attack your day. 2nd bedroom and full bathroom are also featured on the main level. Downstairs is a full basement with 2 full bedrooms with egress windows. Brand new full bathroom, living room/play room, wet bar, quiet laundry room, and brand new furnace, a/c, and water heater complete the basement. Outside you'll have the nicest lawn in the neighborhood to start with. Covered concrete patio. nice big fenced yard with storage sheds and a outdoor fireplace perfect for sitting around on Colorado's cool nights.

Carl Wemhoff
 303-807-6600
 docwemhoff@aol.com



2045 S xavier Street, Denver, CO 80219 – Main Level



GROSS INTERNAL AREA
FLOOR 1: 936 sq. ft, FLOOR 2: 1015 sq. ft
EXCLUDED AREAS: , GARAGE: 176 sq. ft
PATIO: 364 sq. ft
TOTAL: 1950 sq. ft
SIZES AND DIMENSIONS ARE APPROXIMATE, ACTUAL MAY VARY.

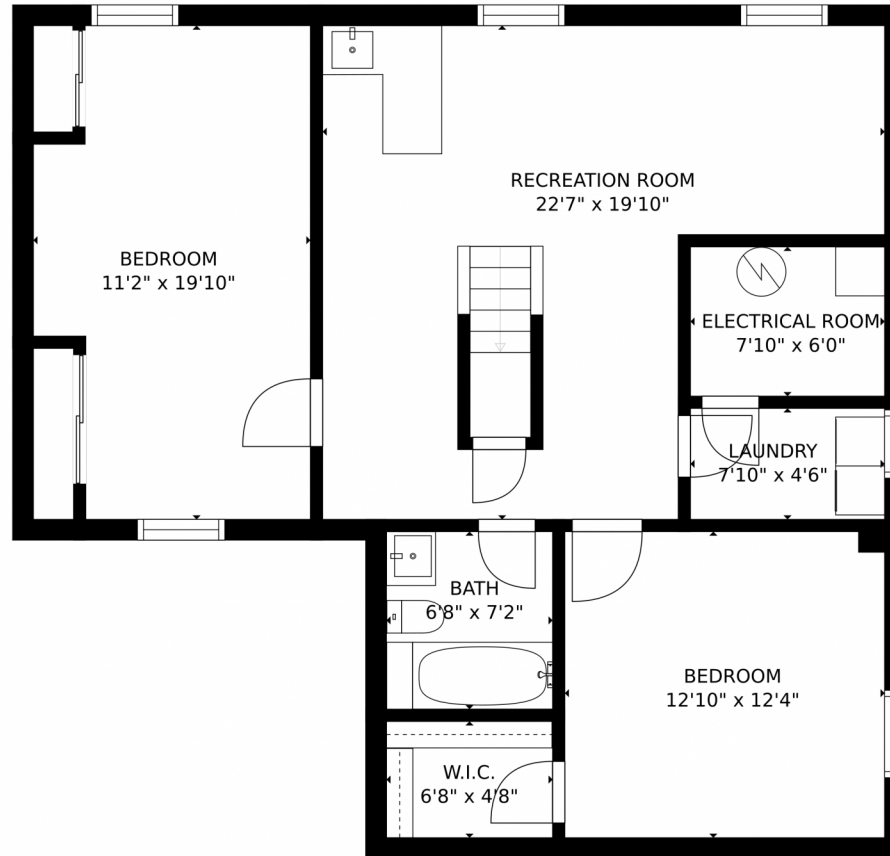


Disclaimer: Sizes and Dimensions are Approximate, Actual May Vary.

Carl Wemhoff
303-807-6600
docwemhoff@aol.com



2045 S xavier Street, Denver, CO 80219 – Lower Level



GROSS INTERNAL AREA
FLOOR 1: 936 sq. ft. FLOOR 2: 1015 sq. ft.
EXCLUDED AREAS: , GARAGE: 176 sq. ft.
PATIO: 364 sq. ft.
TOTAL: 1950 sq. ft.
SIZES AND DIMENSIONS ARE APPROXIMATE, ACTUAL MAY VARY.

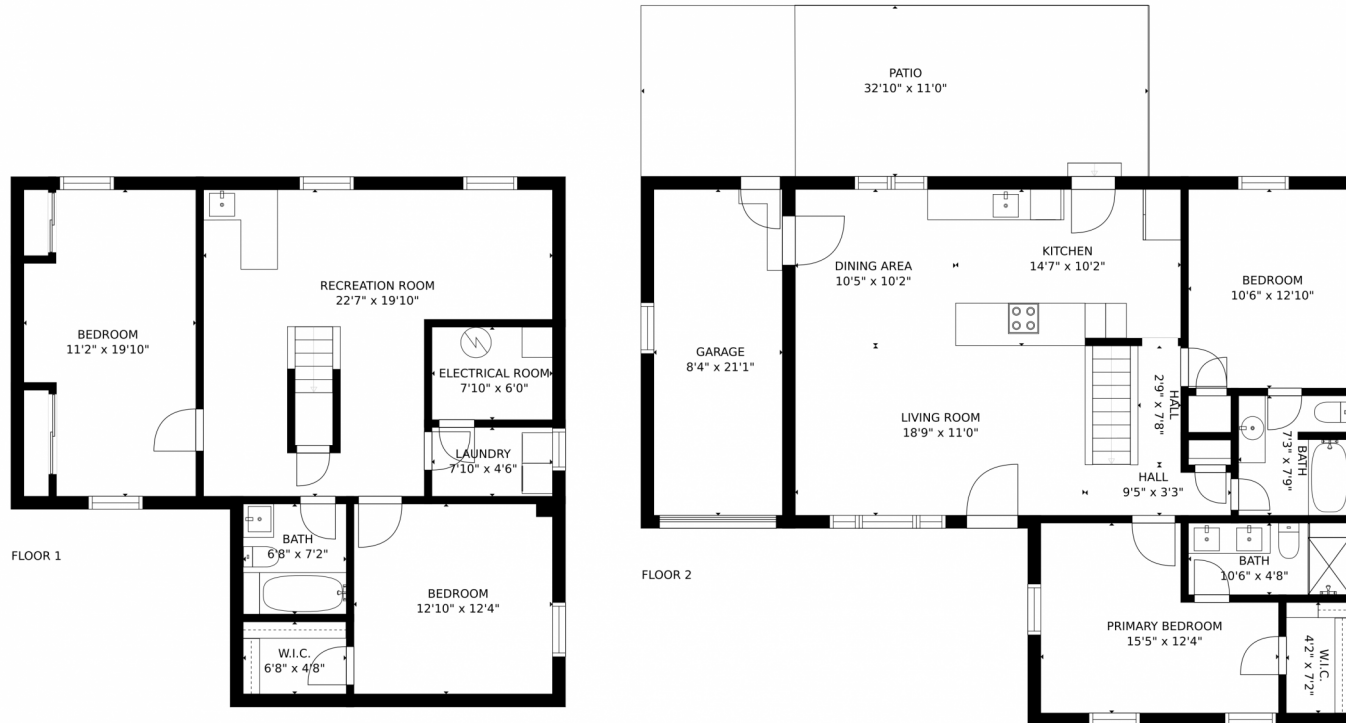


Disclaimer: Sizes and Dimensions are Approximate, Actual May Vary.

Carl Wemhoff
303-807-6600
docwemhoff@aol.com



2045 S xavier Street, Denver, CO 80219 – All Levels



GROSS INTERNAL AREA
FLOOR 1: 936 sq. ft. FLOOR 2: 1015 sq. ft.
EXCLUDED AREAS: GARAGE: 176 sq. ft.
PATIO: 364 sq. ft.
TOTAL: 1950 sq. ft.
SIZES AND DIMENSIONS ARE APPROXIMATE, ACTUAL MAY VARY.



Disclaimer: Sizes and Dimensions are Approximate, Actual May Vary.

Carl Wemhoff
303-807-6600
docwemhoff@aol.com

