



56909 E 42nd Court
 Strasburg, CO 80136
COMMUNITY: Strasburg

MLS # 4914335
PRICE \$850,000



Single Family



4166 SQFT



5 Beds



3/1 Baths



4 Car



4.59 Acre

PROPERTY DETAILS

Views, Sunsets, Sunrises, and tons of natural light from this fully updated ranch home just two miles north of Strasburg. Enjoy the sunset and mountain views to the west off the large, covered, back deck as well as sunrises to the east off the covered front porch. Completely remodeled in 2015-2016 with additional updates finished in 2020, there isn't an inch untouched. This home lives large and is uniquely positioned on nearly 5 acres with no HOA, a 2-car attached garage as well as a 24x30 shop building. Access this home with fully paved, county-maintained roads leading to an oversized, driveway with plenty of space to park your recreational vehicles and more. Inside you will be welcomed by dramatic vaulted ceilings, clerestory windows, and an oversized, stunning custom kitchen with a nearly 14' island. The main floor lives large with a sitting room, family room and dining room directly off the kitchen. Enjoy the spa-like primary, five-piece bathroom with walk-in closet and jetted tub as well as easy access to the backyard deck from the primary bedroom. Split layout with the primary bed/bath across the main floor from the other bedrooms and accessible full bath with dual vanities. Downstairs is expansive and includes a large ¾ bath, two additional bedrooms, a bonus/craft room, storage rooms and several living spaces. With the open concept living in the basement, it would be easy to install a kitchenette/wet bar or other entertainment features! Don't miss the opportunity to call



Tudy Krom
 303-913-7094
 tkrom1098@yahoo.com



Scan code
 for more
 property
 details



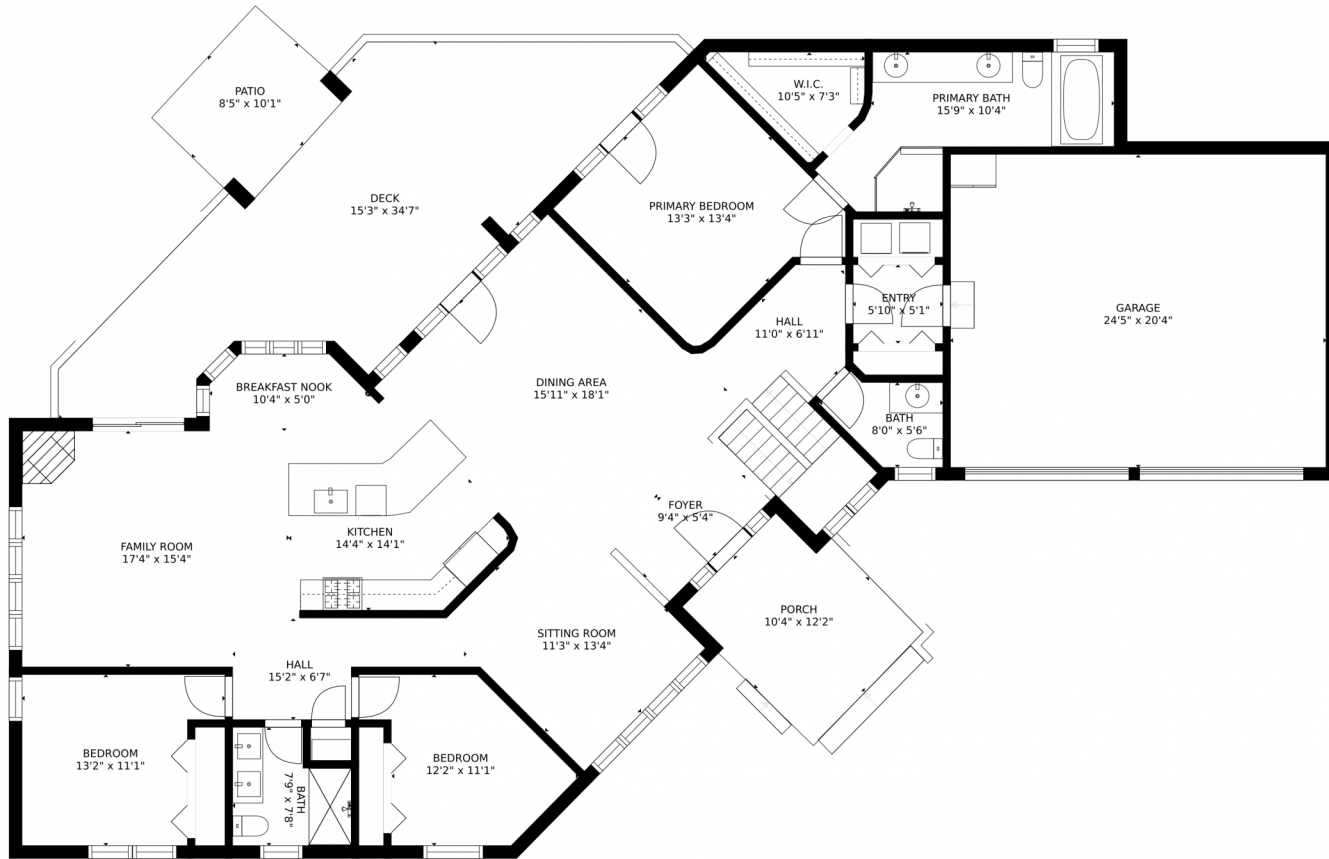
this property your home!



Tudy Krom
303-913-7094
tkrom1098@yahoo.com



56909 E 42nd Court, Strasburg, CO 80136 – Main



GROSS INTERNAL AREA
FLOOR 1: 1832 sq. ft, FLOOR 2: 1967 sq. ft
FLOOR 3: 0 sq. ft, EXCLUDED AREAS:
GARAGE: 1203 sq. ft, DECK: 444 sq. ft
PATIO: 85 sq. ft, PORCH: 121 sq. ft
TOTAL: 3799 sq. ft
SIZES AND DIMENSIONS ARE APPROXIMATE, ACTUAL MAY VARY.



Disclaimer: Sizes and Dimensions are Approximate, Actual May Vary.



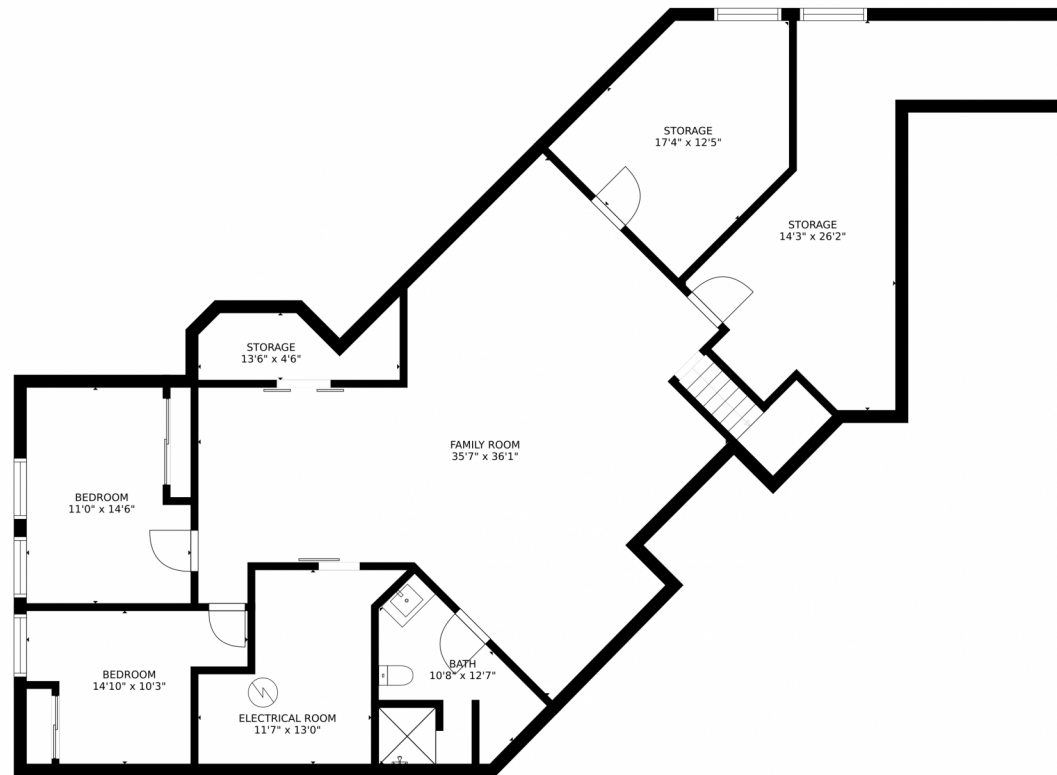
Tudy Krom
303-913-7094
tkrom1098@yahoo.com



Scan code
for more
property
details



56909 E 42nd Court, Strasburg, CO 80136 – Lower Level



GROSS INTERNAL AREA
FLOOR 1: 1832 sq. ft, FLOOR 2: 1967 sq. ft
FLOOR 3: 0 sq. ft, EXCLUDED AREAS:
GARAGE: 1203 sq. ft, DECK: 444 sq. ft
PATIO: 85 sq. ft, PORCH: 121 sq. ft
TOTAL: 3799 sq. ft
SIZES AND DIMENSIONS ARE APPROXIMATE, ACTUAL MAY VARY.



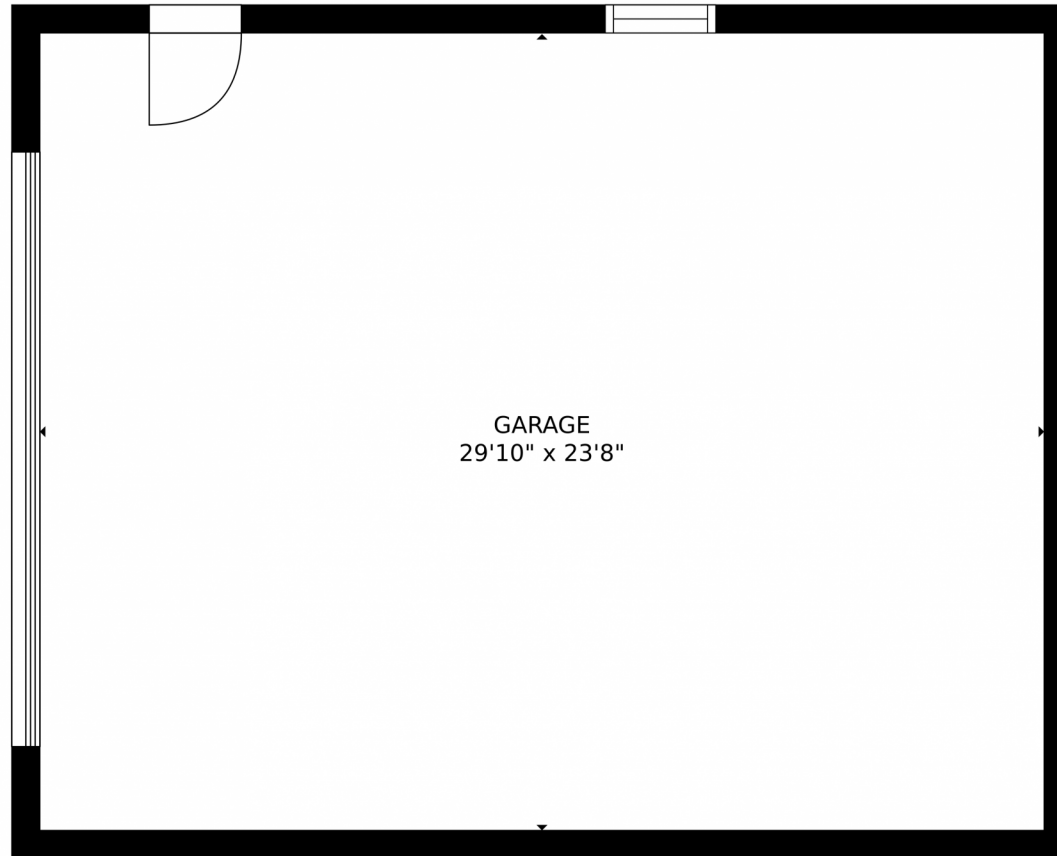
Disclaimer: Sizes and Dimensions are Approximate, Actual May Vary.



Tudy Krom
303-913-7094
tkrom1098@yahoo.com



56909 E 42nd Court, Strasburg, CO 80136 – Detached Garage



GROSS INTERNAL AREA
FLOOR 1: 1832 sq. ft, FLOOR 2: 1967 sq. ft
FLOOR 3: 0 sq. ft, EXCLUDED AREAS:
GARAGE: 1203 sq. ft, DECK: 444 sq. ft
PATIO: 85 sq. ft, PORCH: 121 sq. ft
TOTAL: 3799 sq. ft
SIZES AND DIMENSIONS ARE APPROXIMATE, ACTUAL MAY VARY.



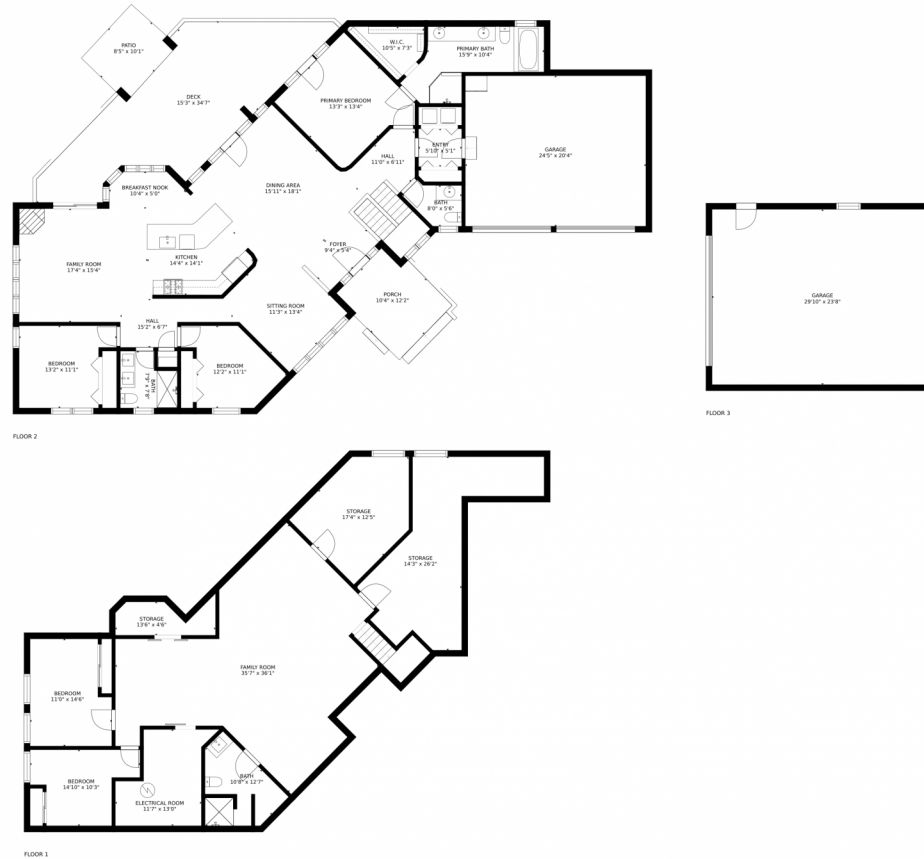
Disclaimer: Sizes and Dimensions are Approximate, Actual May Vary.



Tudy Krom
303-913-7094
tkrom1098@yahoo.com



56909 E 42nd Court, Strasburg, CO 80136 – All Levels



GROSS INTERNAL AREA
 FLOOR 1: 1832 sq. ft, FLOOR 2: 1967 sq. ft
 FLOOR 3: 0 sq. ft, EXCLUDED AREAS:
 GARAGE: 1203 sq. ft, DECK: 444 sq. ft
 PATIO: 85 sq. ft, PORCH: 121 sq. ft
 TOTAL: 3799 sq. ft
 SIZES AND DIMENSIONS ARE APPROXIMATE, ACTUAL MAY VARY.



Disclaimer: Sizes and Dimensions are Approximate, Actual May Vary.



Tudy Krom
 303-913-7094
 tkrom1098@yahoo.com

