



12837 Mayfair Way, E
Englewood, CO 80112
COMMUNITY: Meridian Villa



Townhouse



1802 SQFT



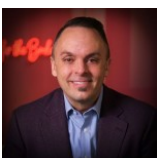
4 Beds



3 Baths



2 Car



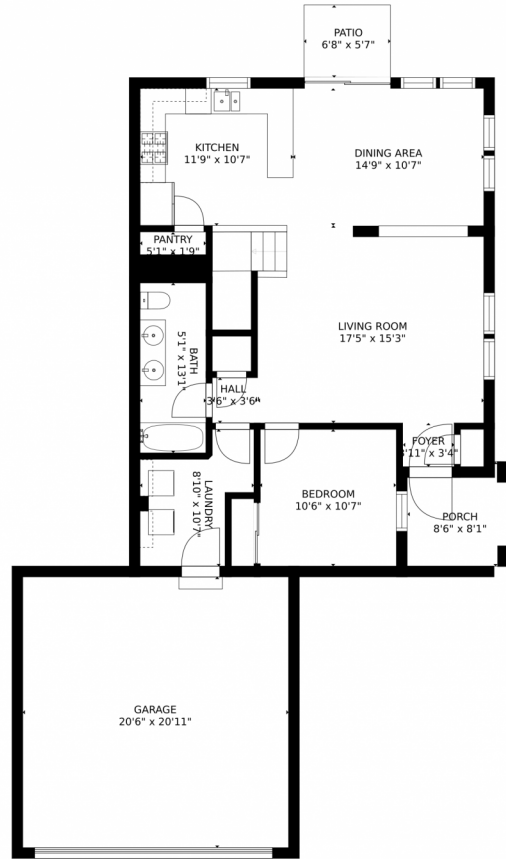
Matt Leprino
303-900-3123
matt@remingo.com



Scan code
for more
property
details



12837 Mayfair Way, E, Englewood, CO 80112 – Main Level



GROSS INTERNAL AREA
FLOOR 1: 927 sq. ft, FLOOR 2: 927 sq. ft
EXCLUDED AREAS: , GARAGE: 429 sq. ft
PATIO: 37 sq. ft, PORCH: 61 sq. ft
TOTAL: 1854 sq. ft
SIZES AND DIMENSIONS ARE APPROXIMATE, ACTUAL MAY VARY.

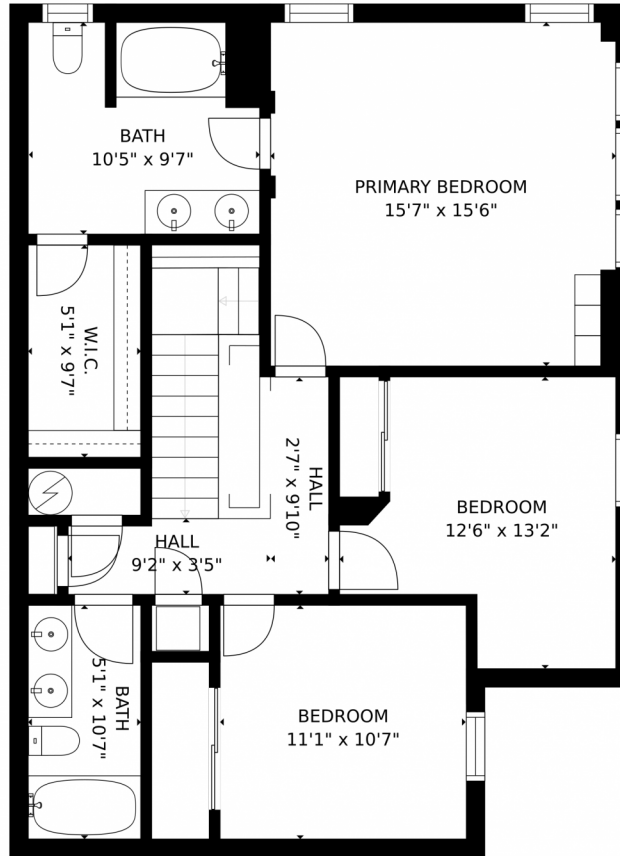


Disclaimer: Sizes and Dimensions are Approximate, Actual May Vary.



Matt Leprino
303-900-3123
matt@remingo.com





GROSS INTERNAL AREA
FLOOR 1: 927 sq. ft, FLOOR 2: 927 sq. ft
EXCLUDED AREAS: , GARAGE: 429 sq. ft
PATIO: 37 sq. ft, PORCH: 61 sq. ft
TOTAL: 1854 sq. ft
SIZES AND DIMENSIONS ARE APPROXIMATE, ACTUAL MAY VARY.



Disclaimer: Sizes and Dimensions are Approximate, Actual May Vary.



Matt Leprino
303-900-3123
matt@remingo.com



12837 Mayfair Way, E, Englewood, CO 80112 – All Levels



GROSS INTERNAL AREA
FLOOR 1: 927 sq. ft., FLOOR 2: 927 sq. ft.
EXCLUDED AREAS: , GARAGE: 429 sq. ft.
PATIO: 37 sq. ft., PORCH: 61 sq. ft.
TOTAL: 1854 sq. ft.
SIZES AND DIMENSIONS ARE APPROXIMATE, ACTUAL MAY VARY.



Disclaimer: Sizes and Dimensions are Approximate, Actual May Vary.



Matt Leprino
303-900-3123
matt@remingo.com

