



6627 S Kewaunee Way
 Aurora, CO 80016
 COMMUNITY: Wheatlands

MLS # 9607191
 PRICE \$600,000



Single Family 3212 SQFT 5 Beds 3 Baths 2 Car 0.13 Acre

PROPERTY DETAILS

Welcome home to this thoughtfully planned and immaculately maintained ranch home of the desirable Wheatlands community in Southeast Aurora! Many honey do's have already been honey-done making this beauty move in ready to the max including updated privacy fencing, a fully finished basement making this a true 5 bedroom home, new carpet on the main level, new lighting in the dining area, and paint touchups throughout the home. The sprawling main level offers an open concept entertainment area flawlessly connecting the kitchen and dining area to the living room along with a private owner's suite quietly tucked away at the back of the main level with two sizable spare bedrooms and another full bathroom; and the laundry space is even on the main level for your convenience. In the finished basement you are welcomed by a massive family room area further leading to two more bedrooms and another bath. A wonderful partially Xeriscaped front and backyard were designed to save you time and money on maintenance with immaculate grass areas in both the front and back for space to play. Just minutes from the Aurora Reservoir and Southlands Mall where you can really make a day of it opting outside and living your best Colorado lifestyle. Make a splash this Summer and meet your new neighbors at the community private pool and clubhouse or enjoy a free membership for your whole family through the HOA to the Aurora YMCA just minutes away.



Tatyana Sturm
 720-350-5909
 tatyana@exitrealtydtc.com
 https://thestorckteam.com



Residents of Wheatlands have the advantage of the award winning education of Cherry Creek Schools with Pine Ridge Elementary within walking distance of your new home. Enjoy endless dining, shopping, and entertainment options in the Southlands Outdoor Retail District featuring a full AMC Dine-In Movie Theater, abundant casual dining options along with higher end restaurant options as well, and so many shopping choices. The Southlands Mall also features a robust courtyard area with a mini splash park in the Summer and a skating rink in the Winter.



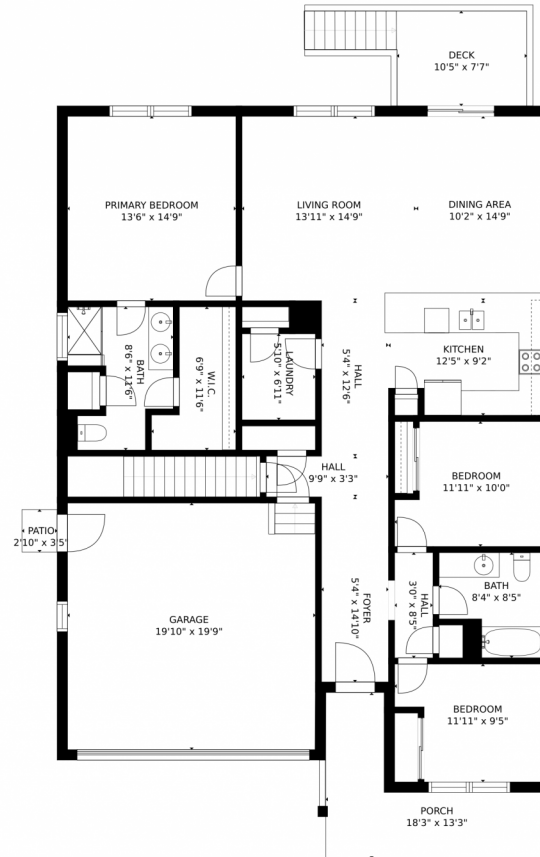
Tatyana Sturm
720-350-5909
tatyana@exitrealtydtc.com
<https://thestorckteam.com>



Scan code
for more
property
details



6627 S Kewaunee Way, Aurora, CO 80016 – Main Level



GROSS INTERNAL AREA
FLOOR 1: 1410 sq. ft, FLOOR 2: 1521 sq. ft
EXCLUDED AREAS: GARAGE: 392 sq. ft
DECK: 102 sq. ft, PATIO: 10 sq. ft
PORCH: 134 sq. ft
TOTAL: 2931 sq. ft
SIZES AND DIMENSIONS ARE APPROXIMATE, ACTUAL MAY VARY.



Disclaimer: Sizes and Dimensions are Approximate, Actual May Vary.



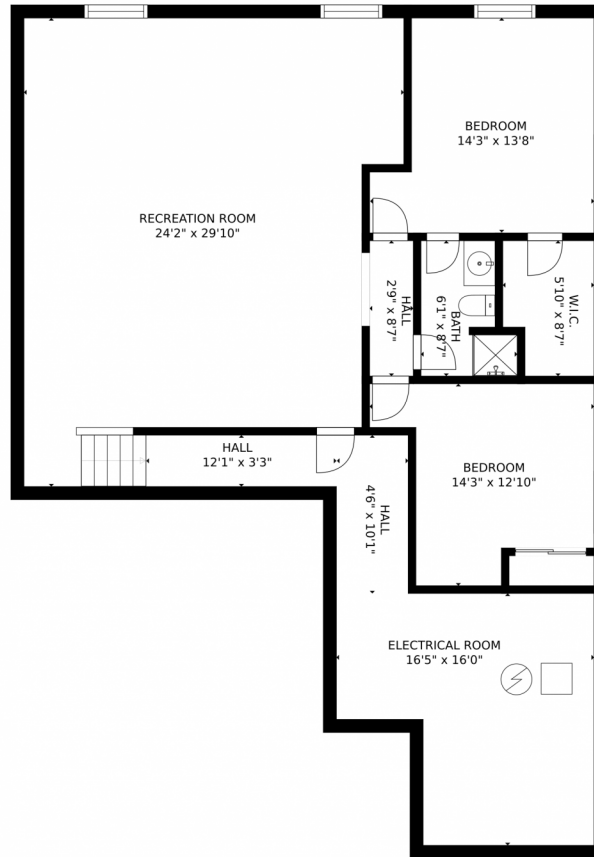
Tatyana Sturm
720-350-5909
tatyana@exitrealtydtc.com
<https://thestorckteam.com>



Scan code
for more
property
details



6627 S Kewaunee Way, Aurora, CO 80016 – Basement



GROSS INTERNAL AREA
FLOOR 1: 1410 sq. ft. FLOOR 2: 1521 sq. ft.
EXCLUDED AREAS: GARAGE: 392 sq. ft.
DECK: 102 sq. ft. PATIO: 10 sq. ft.
PORCH: 134 sq. ft.
TOTAL: 2931 sq. ft.
SIZES AND DIMENSIONS ARE APPROXIMATE, ACTUAL MAY VARY.



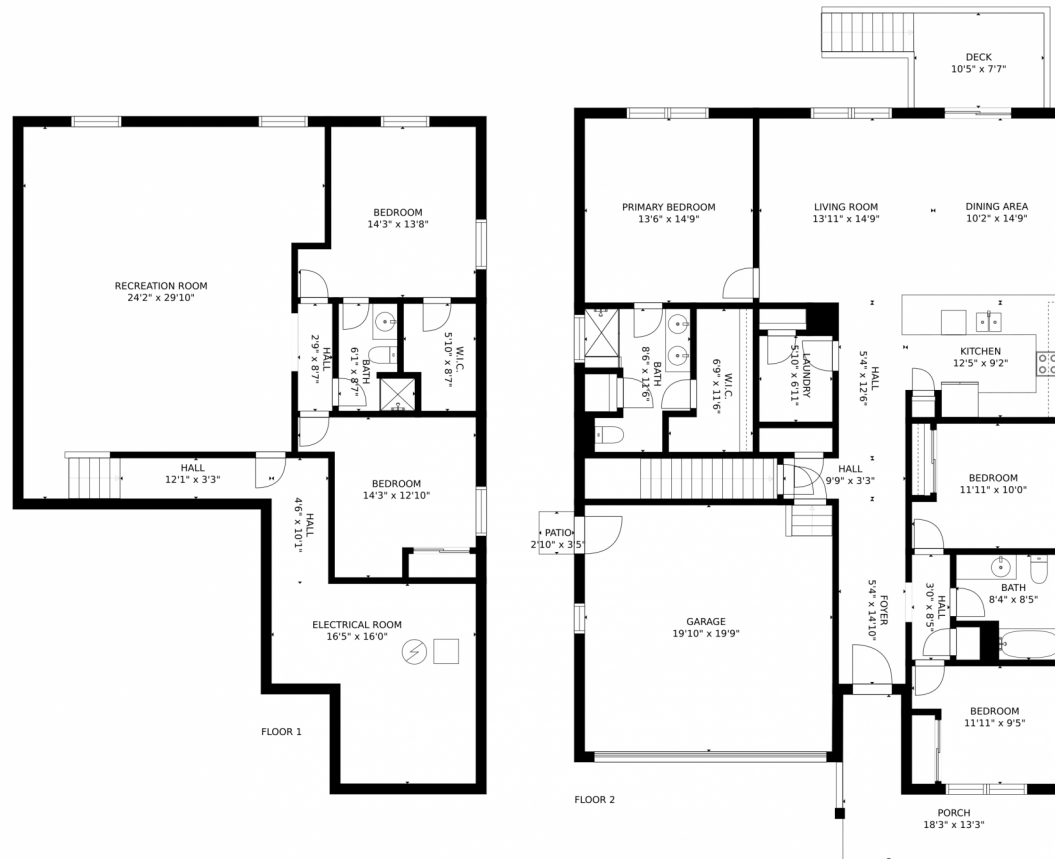
Disclaimer: Sizes and Dimensions are Approximate, Actual May Vary.



Tatyana Sturm
720-350-5909
tatyana@exitrealtydtc.com
<https://thestorckteam.com>



6627 S Kewaunee Way, Aurora, CO 80016 – All Levels



GROSS INTERNAL AREA
FLOOR 1: 1410 sq. ft, FLOOR 2: 1521 sq. ft
EXCLUDED AREAS: GARAGE: 392 sq. ft
DECK: 102 sq. ft, PATIO: 10 sq. ft
PORCH: 134 sq. ft
TOTAL: 2931 sq. ft
SIZES AND DIMENSIONS ARE APPROXIMATE, ACTUAL MAY VARY.



Disclaimer: Sizes and Dimensions are Approximate, Actual May Vary.



Tatyana Sturm
720-350-5909
tatyana@exitrealtydtc.com
<https://thestorckteam.com>



Scan code
for more
property
details

