



Single Family



5252 SQFT



5 Beds



3/1 Baths



3 Car



7.15 Acre

PROPERTY DETAILS

Look No Further! This is the one you Have Been Waiting For! Welcome to this Fully Custom Mountain Log Home Where Luxury Meets Functional While Surrounded By Trees. The Home was Built by the Current Owners and Have put Thought into Every Detail! Only 18 Min Up Golden Gate Canyon Road from Highway 93 and 2 Miles from Golden Gate State Park. As you Walk in you have Custom Inlay Title and Slate Floors. Updated Modern Kitchen with Granite Counter Tops, Pendant Lighting over the Spacious Island and Views From the Windows. Step into the Family Room as you Are Greeted by Sky High Vaulted Ceilings and Natural Light from the Picturesque Windows, a Wood Burning Stove and Hand Carved Mantle. Step Outside on the Wrap Around Trex Deck with Amazing Panoramic Views. Great for Relaxing or Entertaining Guests. Main Floor Master with Access to a 2nd Deck, More Views and an Awesome 6 Piece Master Bath Room with a Jetted Tub. Upstairs you have a Huge Loft with Skylights, Canister Lighting and Built in Speakers. In the Walkout Basement you will Find 4 Additional Bedrooms with Walk in Closets and 3 Bathrooms and Plenty of Storage. State of the Art Control 4 Zoned Heat Throughout the Home. Oversized Heated 3 Car Garage with more Storage Space in the Attic. Large Utility Room with the Washer, Dryer and Sink. Outside you have Over 7 usable Acres to Call your own, Metal Roof with Heated Gutters, Ice and Snow Arrestor Blocks.



Anthony Limpede
303-564-8600
myagenttonyl@gmail.com



Scan code
for more
property
details



Security System, Ethernet/Cat5 Cable and High Speed Internet and Low Taxes!



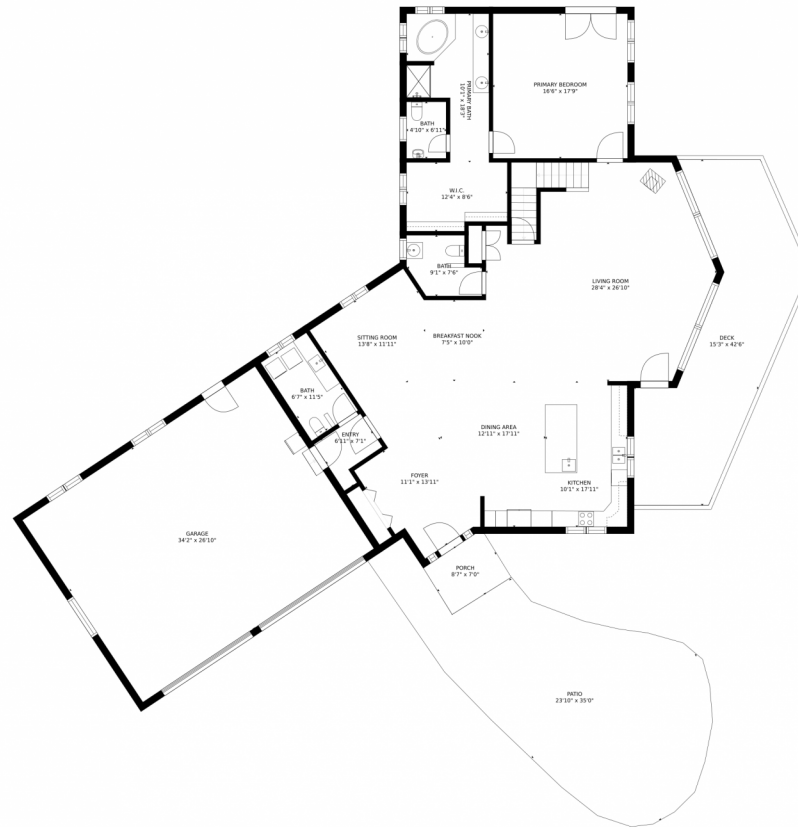
Anthony Limpede
303-564-8600
myagenttonyl@gmail.com



Scan code
for more
property
details



5997 Golden Gate Canyon Road, Golden, CO 80503 — Main Level



GROSS INTERNAL AREA
FLOOR 1: 2196 sq. ft, FLOOR 2: 2288 sq. ft
FLOOR 3: 463 sq. ft, EXCLUDED AREAS:
GARAGE: 914 sq. ft, DECK: 463 sq. ft
PATIO: 690 sq. ft, PORCH: 58 sq. ft
TOTAL: 4948 sq. ft
SIZES AND DIMENSIONS ARE APPROXIMATE, ACTUAL MAY VARY.



Disclaimer: Sizes and Dimensions are Approximate, Actual May Vary.



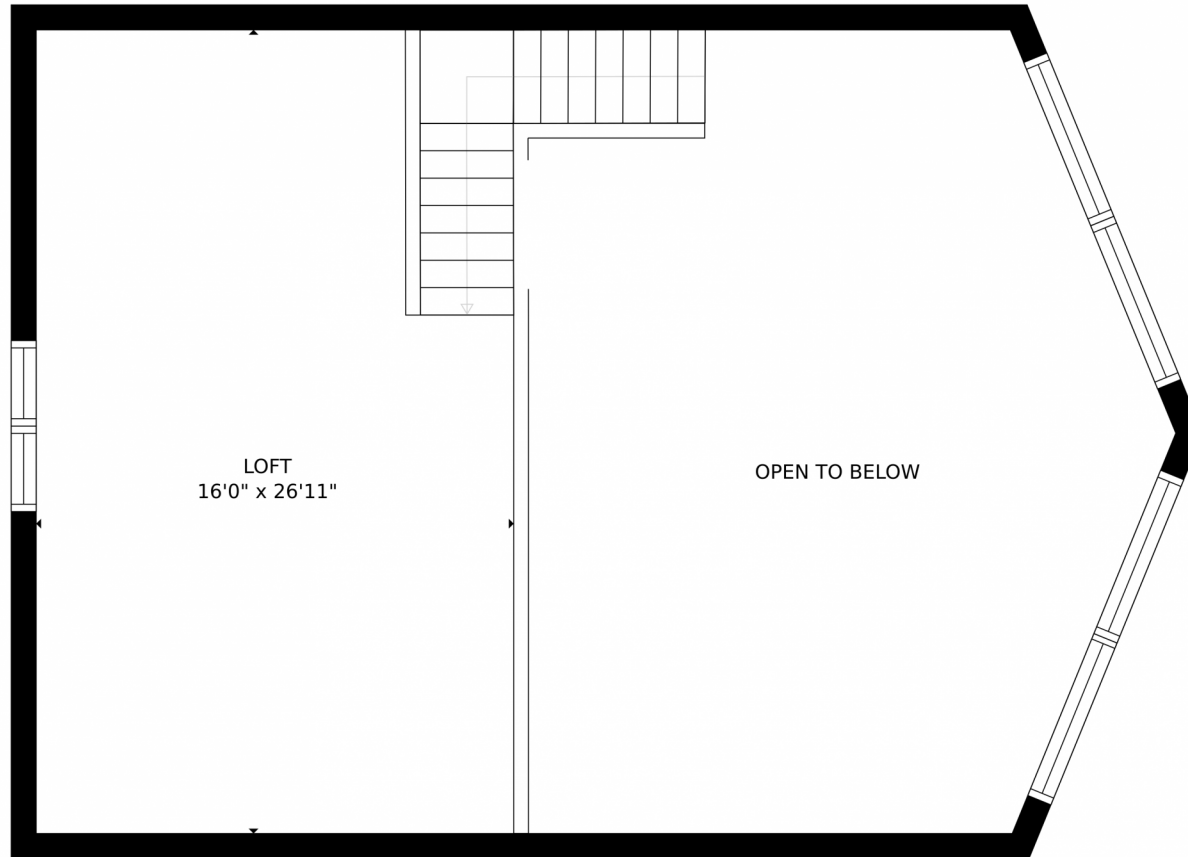
Anthony Limpede
303-564-8600
myagenttonyl@gmail.com



Scan code
for more
property
details



5997 Golden Gate Canyon Road, Golden, CO 80503 — Upper Level



GROSS INTERNAL AREA
FLOOR 1: 2196 sq. ft, FLOOR 2: 2288 sq. ft
FLOOR 3: 463 sq. ft, EXCLUDED AREAS:
GARAGE: 914 sq. ft, DECK: 463 sq. ft
PATIO: 690 sq. ft, PORCH: 58 sq. ft
TOTAL: 4948 sq. ft
SIZES AND DIMENSIONS ARE APPROXIMATE, ACTUAL MAY VARY.



Disclaimer: Sizes and Dimensions are Approximate, Actual May Vary.



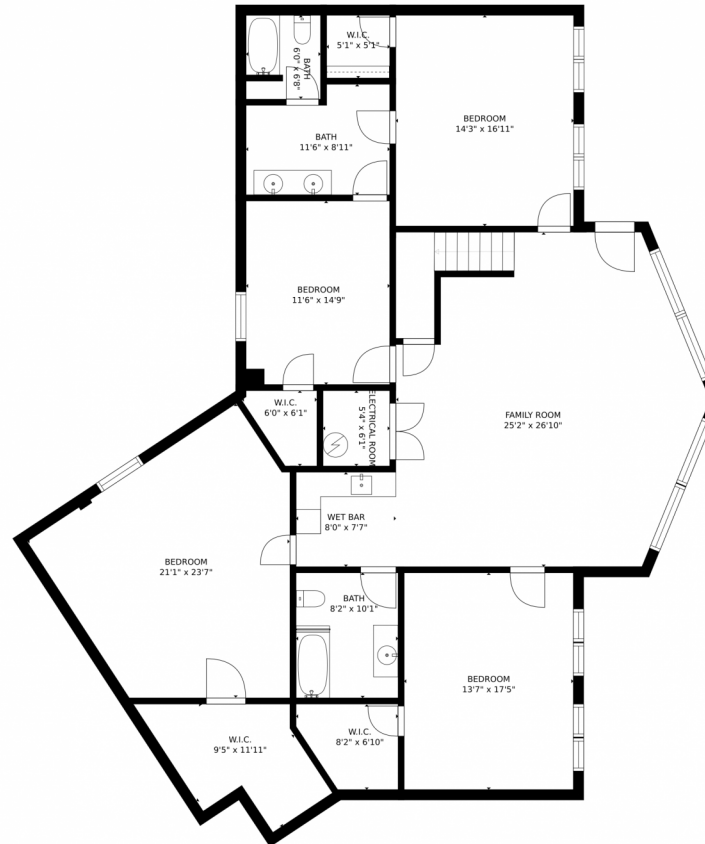
Anthony Limpede
303-564-8600
myagenttonyl@gmail.com



Scan code
for more
property
details



5997 Golden Gate Canyon Road, Golden, CO 80503 — Lower Level



GROSS INTERNAL AREA
FLOOR 1: 2196 sq. ft, FLOOR 2: 2288 sq. ft
FLOOR 3: 463 sq. ft, EXCLUDED AREAS:
GARAGE: 914 sq. ft, DECK: 463 sq. ft
PATIO: 690 sq. ft, PORCH: 58 sq. ft
TOTAL: 4948 sq. ft
SIZES AND DIMENSIONS ARE APPROXIMATE, ACTUAL MAY VARY.



Disclaimer: Sizes and Dimensions are Approximate, Actual May Vary.



Anthony Limpede
303-564-8600
myagenttonyl@gmail.com



5997 Golden Gate Canyon Road, Golden, CO 80503 — All Levels



GROSS INTERNAL AREA
FLOOR 1: 2196 sq. ft., FLOOR 2: 2288 sq. ft.
FLOOR 3: 463 sq. ft., EXCLUDED AREAS:
GARAGE: 914 sq. ft., DECK: 463 sq. ft.
PATIO: 690 sq. ft., PORCH: 58 sq. ft.
TOTAL: 4948 sq. ft.
SIZES AND DIMENSIONS ARE APPROXIMATE, ACTUAL MAY VARY.



Disclaimer: Sizes and Dimensions are Approximate, Actual May Vary.



Anthony Limpede
303-564-8600
myagenttonyl@gmail.com

