



4053 S Rifle Way
Aurora, CO 80013
COMMUNITY: Mill Run

MLS # 8764930
PRICE \$425,000



Multi Family



2056 SQFT



3 Beds



3 Baths



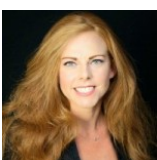
2 Car



0.04 Acre

PROPERTY DETAILS

As you enter you are welcomed by an open concept living room with fire place, dining area and kitchen and breakfast bar all with beautiful hard flooring throughout. There is a private yard area off of the dining room that has a patio and space for pets or outdoor activities and is surrounded by a six foot vinyl fence. Upstairs you will find two additional bedrooms with a Hollywood bathroom. This townhome also has an attached 2 car garage and is steps away from green space with trails that walk to Quincy Reservoir.

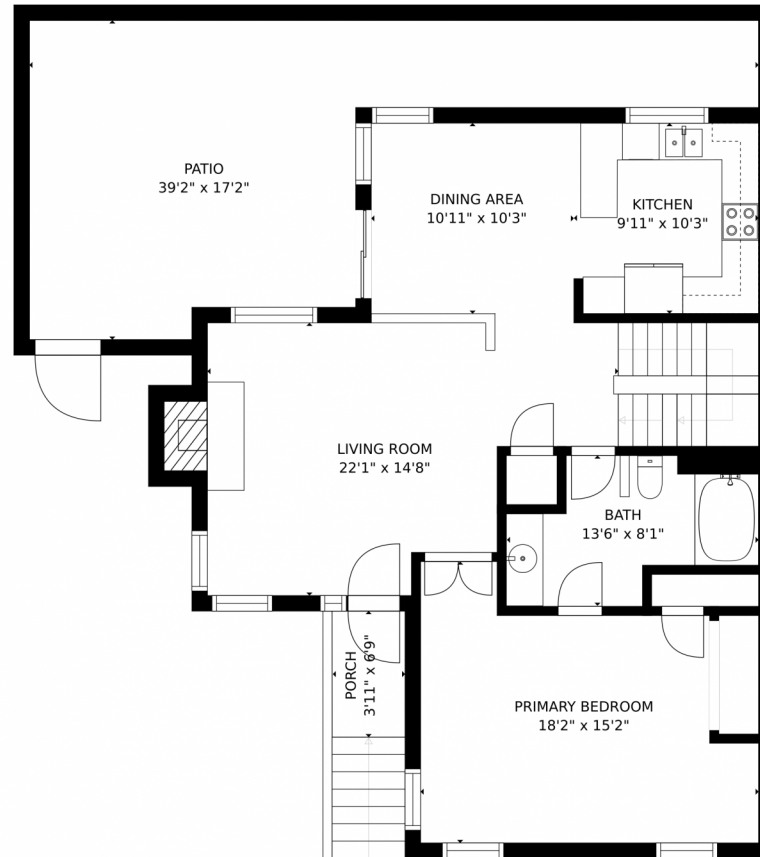


Ryann Muir
720-766-9047
ryannmuir@yourcastle.com



Scan code
for more
property
details

4053 S Rifle Way, Aurora, CO 80013 – Main Floor



GROSS INTERNAL AREA
FLOOR 1: 572 sq. ft. FLOOR 2: 908 sq. ft.
FLOOR 3: 562 sq. ft. EXCLUDED AREAS:
GARAGE: 355 sq. ft. PATIO: 591 sq. ft.
PORCH: 27 sq. ft.
TOTAL: 2043 sq. ft.
SIZES AND DIMENSIONS ARE APPROXIMATE, ACTUAL MAY VARY.



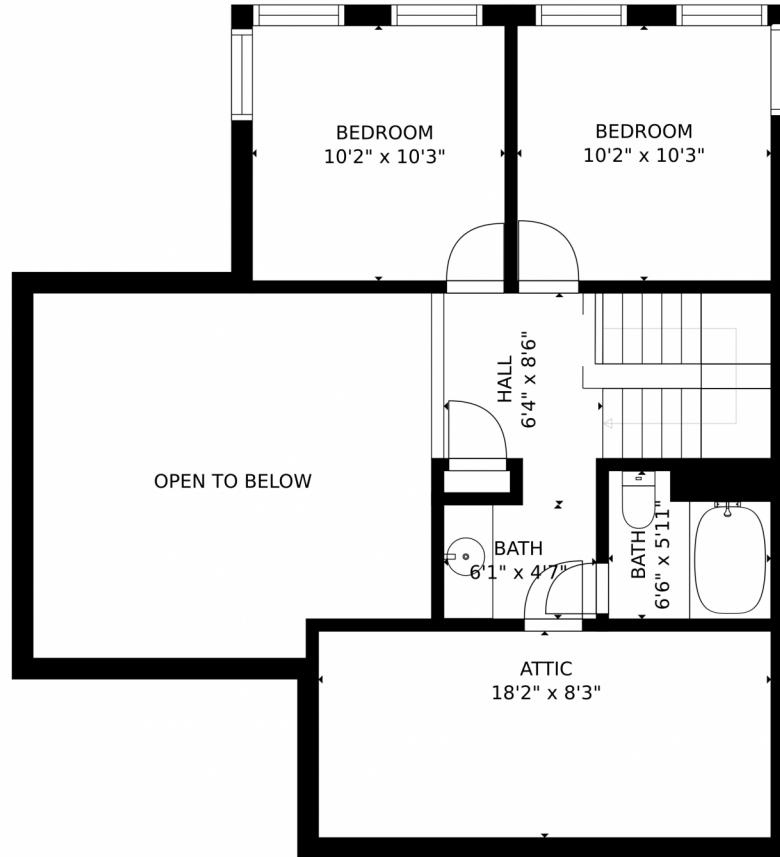
Disclaimer: Sizes and Dimensions are Approximate, Actual May Vary.



Ryann Muir
720-766-9047
ryannmuir@yourcastle.com



4053 S Rifle Way, Aurora, CO 80013 – Upper Floor



GROSS INTERNAL AREA
FLOOR 1: 572 sq. ft. FLOOR 2: 908 sq. ft.
FLOOR 3: 562 sq. ft. EXCLUDED AREAS:
GARAGE: 355 sq. ft. PATIO: 591 sq. ft.
PORCH: 27 sq. ft.
TOTAL: 2043 sq. ft.
SIZES AND DIMENSIONS ARE APPROXIMATE, ACTUAL MAY VARY.



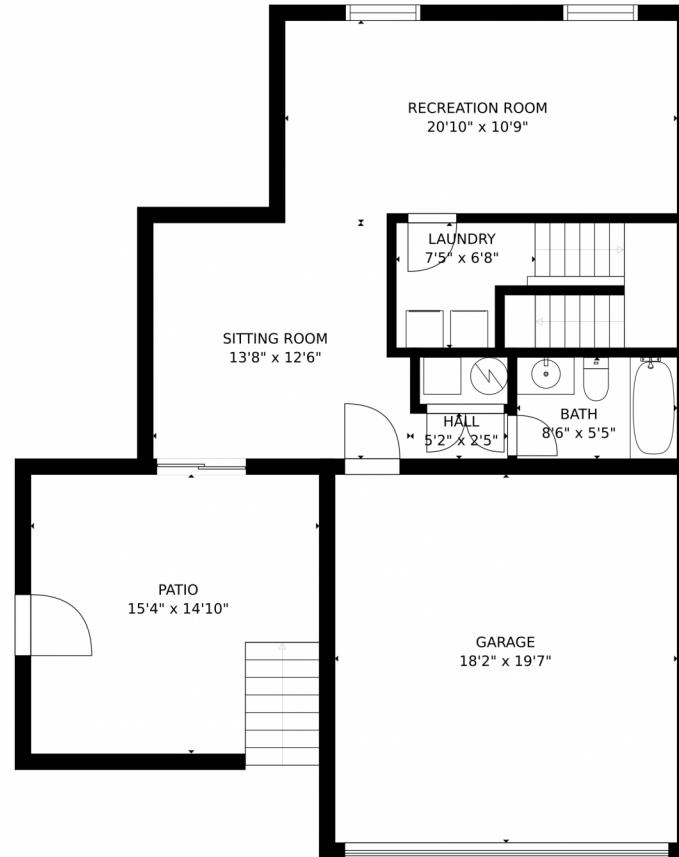
Disclaimer: Sizes and Dimensions are Approximate, Actual May Vary.



Ryann Muir
720-766-9047
ryannmuir@yourcastle.com



4053 S Rifle Way, Aurora, CO 80013 – Lower Floor



GROSS INTERNAL AREA
FLOOR 1: 572 sq. ft. FLOOR 2: 908 sq. ft.
FLOOR 3: 562 sq. ft. EXCLUDED AREAS:
GARAGE: 355 sq. ft. PATIO: 591 sq. ft.
PORCH: 27 sq. ft.
TOTAL: 2043 sq. ft.
SIZES AND DIMENSIONS ARE APPROXIMATE, ACTUAL MAY VARY.



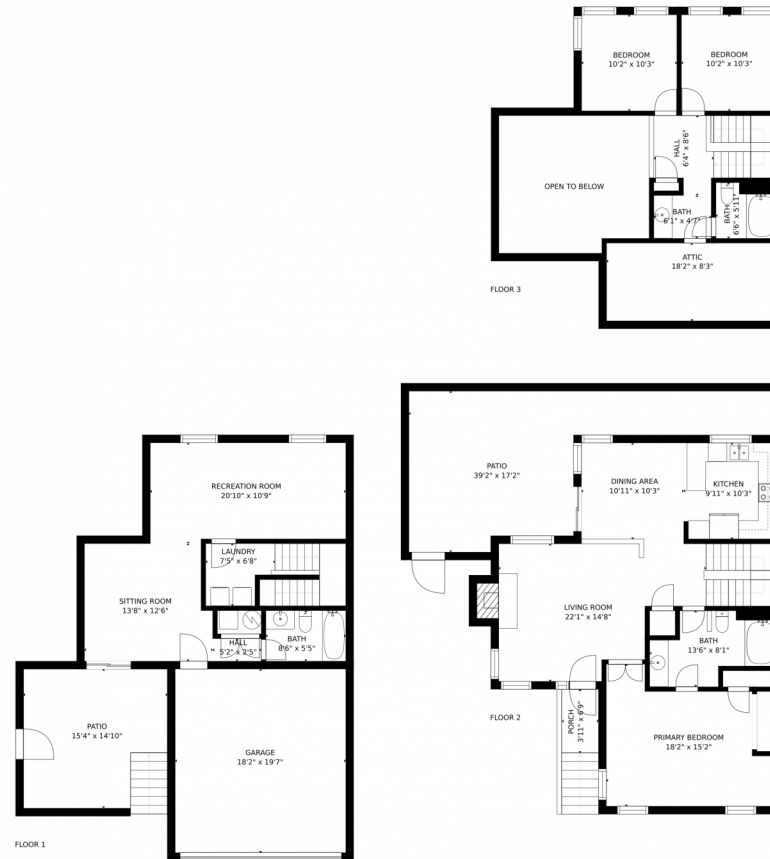
Disclaimer: Sizes and Dimensions are Approximate, Actual May Vary.



Ryann Muir
720-766-9047
ryannmuir@yourcastle.com



4053 S Rifle Way, Aurora, CO 80013 – All Floors



GROSS INTERNAL AREA
FLOOR 1: 572 sq. ft. FLOOR 2: 908 sq. ft
FLOOR 3: 562 sq. ft. EXCLUDED AREAS:
GARAGE: 355 sq. ft. PATIO: 591 sq. ft
PORCH: 27 sq. ft
TOTAL: 2043 sq. ft
SIZES AND DIMENSIONS ARE APPROXIMATE, ACTUAL MAY VARY.



Disclaimer: Sizes and Dimensions are Approximate, Actual May Vary.



Ryann Muir
720-766-9047
ryannmuir@yourcastle.com

