



Single Family



3045 SQFT



4 Beds



2 Baths



1 Car



0.29 Acre

PROPERTY DETAILS

This very charming, updated main level living home with lovely views is within walking distance of Evergreen Lake and downtown, and backs up to public land. Hike from your backyard, relax on the front deck with mountain sunset views, or enjoy your morning coffee on the lovely sunny patio in the fenced back yard. You will love the brand new wonderful sliding wall of glass doors that opens up the family room to the back patio and yard too. The inviting home has many features and options for making this perfect for your lifestyle: 4 bedrooms, office, family room, and several flex spaces. High speed internet means you can work from home. The granite and stainless kitchen has hickory cabinets, 2 pantries and dual fuel stove, and is open to dining with views. The large, cozy great room features a fabulous fireplace and hearth made with native rock collected from the property, and beautiful pine flooring. Open to the great room is a lovely sitting/dining/office bonus room with floor to ceiling windows. The home features darling updated bathrooms too. The primary suite is on the main floor with classic built-in closets and drawers and it's own deck. You have true main level living with the primary and 2 more bedrooms on main floor, with additional family room, office/study and lovely sunny flex space too. Downstairs find the newer garage with ample storage, 4th bedroom and the large laundry room with plenty of room for craft or workshop space. As you enter from the



Pandora & John Erlandson

303-888-6298

pandora@pandorajohnproperties.com

<https://www.pandorajohnproperties.com>

Scan code
for more
property
details



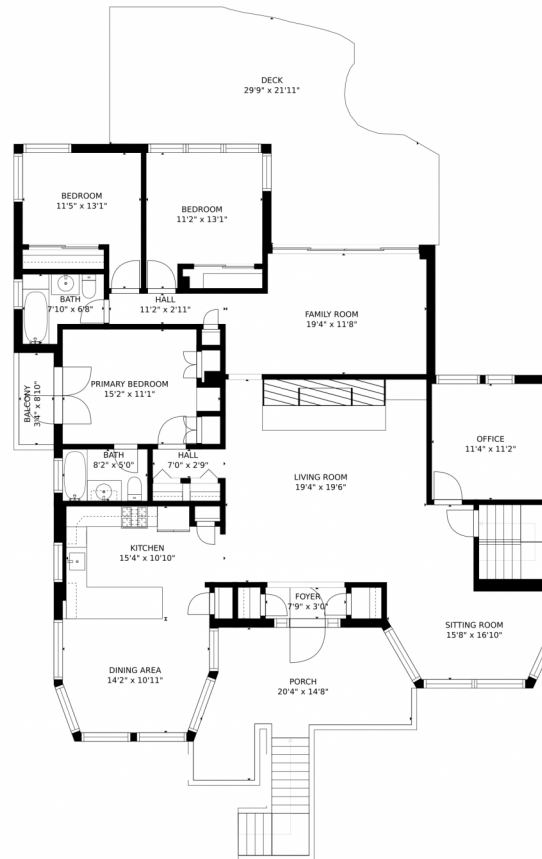
garage you will find the newly renovated mudroom area, also perfect for workout area. The backyard is beautiful with tiered garden areas, pagoda for your grill or reading, and well-fenced garden area. The home has a paved driveway, public utilities and high speed internet. This is a beautifully updated classic mountain home on public open space and just one mile from downtown Evergreen.



Pandora & John Erlandson
303-888-6298
pandora@pandorajohnproperties.com
<https://www.pandorajohnproperties.com>



28021 Camel Heights Circle, Evergreen, CO 80439 – Main Level



GROSS INTERNAL AREA
FLOOR 1: 970 sq. ft., FLOOR 2: 1979 sq. ft.
EXCLUDED AREAS: , GARAGE: 392 sq. ft.
BALCONY: 30 sq. ft., DECK: 451 sq. ft.
PORCH: 261 sq. ft.
TOTAL: 2949 sq. ft.
SIZES AND DIMENSIONS ARE APPROXIMATE, ACTUAL MAY VARY.



Disclaimer: Sizes and Dimensions are Approximate, Actual May Vary.



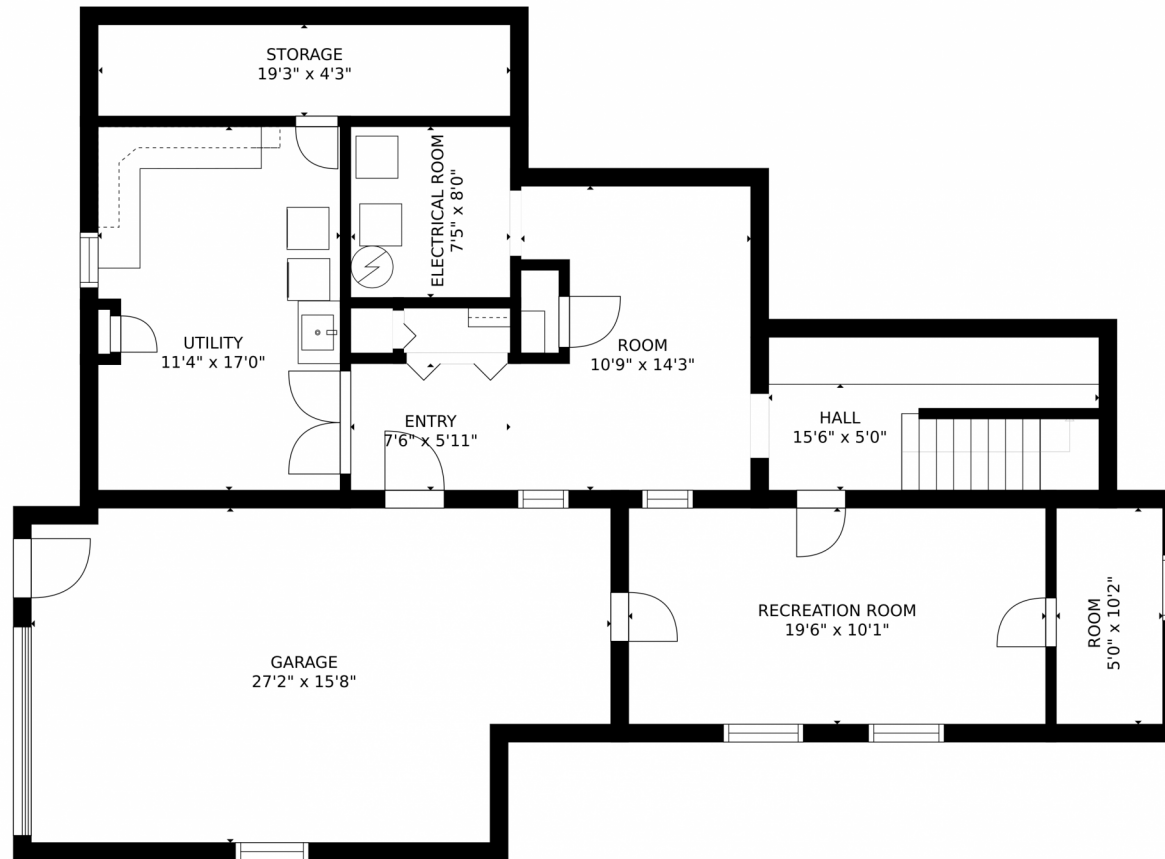
Pandora & John Erlandson
303-888-6298
pandora@pandorajohnproperties.com
<https://www.pandorajohnproperties.com>



Scan code
for more
property
details



28021 Camel Heights Circle, Evergreen, CO 80439 – Lower Level



GROSS INTERNAL AREA
FLOOR 1: 970 sq. ft., FLOOR 2: 1979 sq. ft.
EXCLUDED AREAS: , GARAGE: 392 sq. ft.
BALCONY: 30 sq. ft., DECK: 451 sq. ft.
PORCH: 261 sq. ft.
TOTAL: 2949 sq. ft.
SIZES AND DIMENSIONS ARE APPROXIMATE, ACTUAL MAY VARY.



Disclaimer: Sizes and Dimensions are Approximate, Actual May Vary.



Pandora & John Erlandson

303-888-6298

pandora@pandorajohnproperties.com

<https://www.pandorajohnproperties.com>

Scan code
for more
property
details



28021 Camel Heights Circle, Evergreen, CO 80439 – All Levels



GROSS INTERNAL AREA
FLOOR 1: 970 sq. ft., FLOOR 2: 1979 sq. ft.
EXCLUDED AREAS: , GARAGE: 392 sq. ft.
BALCONY: 30 sq. ft., DECK: 451 sq. ft.
PORCH: 261 sq. ft.
TOTAL: 2949 sq. ft.
SIZES AND DIMENSIONS ARE APPROXIMATE, ACTUAL MAY VARY.



Disclaimer: Sizes and Dimensions are Approximate, Actual May Vary.



Pandora & John Erlandson
303-888-6298
pandora@pandorajohnproperties.com
<https://www.pandorajohnproperties.com>



Scan code
for more
property
details

