





3322 South Oneida Way
Denver, CO 80224
COMMUNITY: Three Fountains



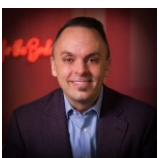
 Townhouse

 2212 SQFT

 3 Beds

 2/1 Baths

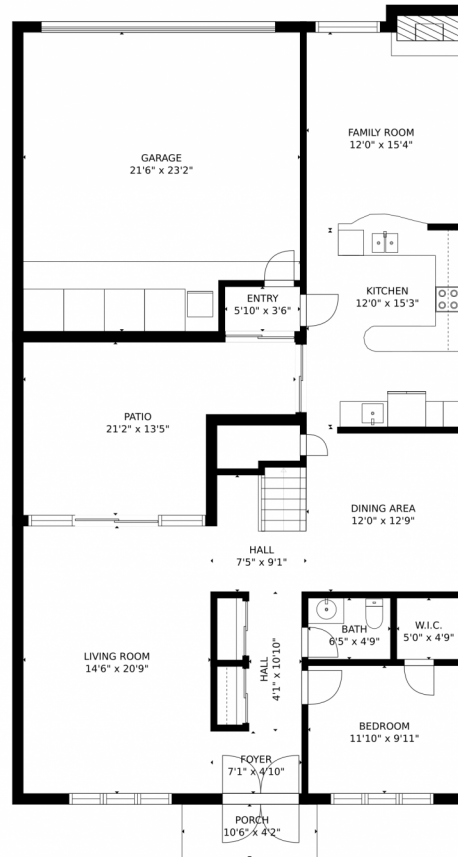
 2 Car



Matt Leprino
303-900-3123
matt@remingo.com

Scan code
for more
property
details





GROSS INTERNAL AREA
FLOOR 1: 1244 sq. ft, FLOOR 2: 852 sq. ft
EXCLUDED AREAS: , GARAGE: 473 sq. ft
PATIO: 229 sq. ft, PORCH: 44 sq. ft
TOTAL: 2095 sq. ft
SIZES AND DIMENSIONS ARE APPROXIMATE, ACTUAL MAY VARY.



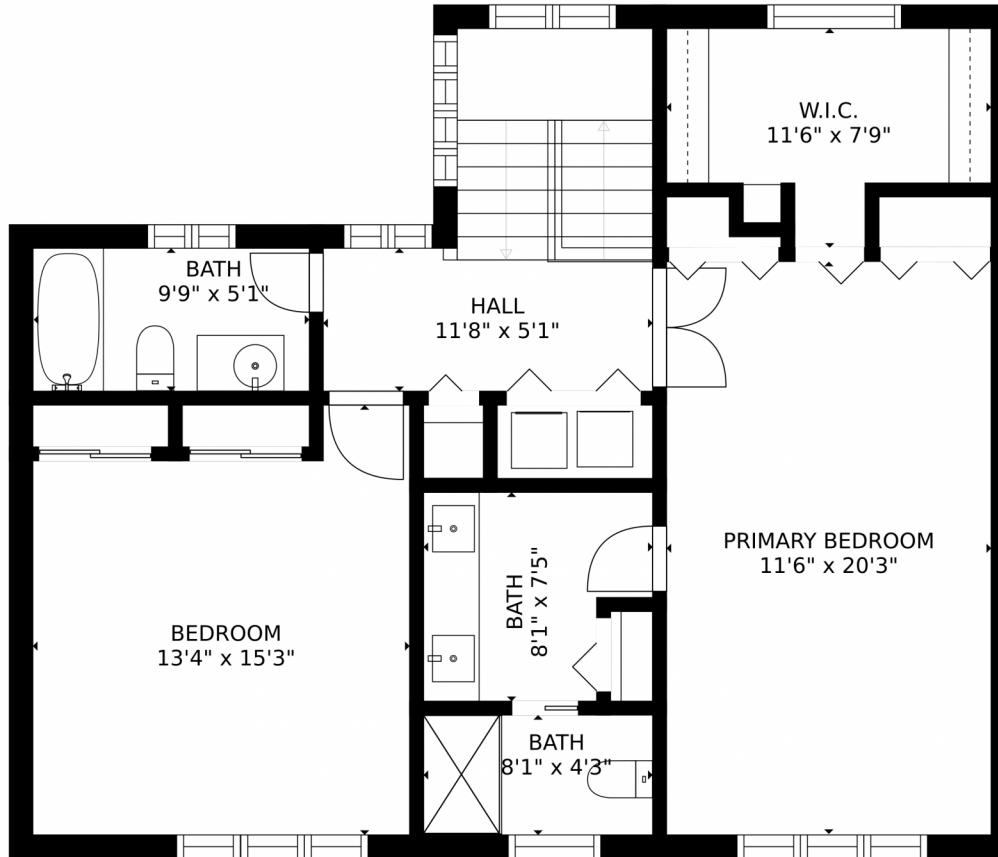
Disclaimer: Sizes and Dimensions are Approximate, Actual May Vary.



Matt Leprino
303-900-3123
matt@remingo.com



3322 South Oneida Way, Denver, CO 80224 – Second Level



GROSS INTERNAL AREA
FLOOR 1: 1244 sq. ft, FLOOR 2: 852 sq. ft
EXCLUDED AREAS: , GARAGE: 473 sq. ft
PATIO: 229 sq. ft, PORCH: 44 sq. ft
TOTAL: 2095 sq. ft
SIZES AND DIMENSIONS ARE APPROXIMATE, ACTUAL MAY VARY.



Disclaimer: Sizes and Dimensions are Approximate, Actual May Vary.



Matt Leprino
303-900-3123
matt@remingo.com



3322 South Oneida Way, Denver, CO 80224 – All Levels



GROSS INTERNAL AREA
FLOOR 1: 1244 sq. ft, FLOOR 2: 852 sq. ft
EXCLUDED AREAS: , GARAGE: 473 sq. ft
PATIO: 229 sq. ft, PORCH: 44 sq. ft
TOTAL: 2095 sq. ft
SIZES AND DIMENSIONS ARE APPROXIMATE, ACTUAL MAY VARY.



Disclaimer: Sizes and Dimensions are Approximate, Actual May Vary.



Matt Leprino
303-900-3123
matt@remingo.com

