



801 Steele Street
 Denver, CO 80206
 COMMUNITY: Congress Park

MLS # 2728275

PRICE
 \$1,589,000



Single Family



3595 SQFT



5 Beds



3 Baths



1 Car



0.13 Acre

PROPERTY DETAILS

A \$160,000 PRICE REDUCTION!!! This spectacular home's original price was \$1,750,000. Not a detail was missed in the complete remodel of this incredibly special 1924 home. This home has the elegance of a modern new home and the charm of the original home. It will capture your senses from the moment you step in from the large airy porch. You will enter into a generous living room with a gorgeous fireplace, and double doors opening to a spacious office with brilliant natural light from the large new windows. The primary is located on the upper level complete with an enormous walk-in closet/dressing room and 5-piece bath ensuite. There is a large basement with a separate entrance, perfect for a mother-in-law suite, or rent for extra income. New windows on the main and lower level are Anlin windows installed by 1st Choice and include a lifetime warranty. All new flooring on the main level has the latest premium luxury engineered system that also has a lifetime warranty. The high-end appliances have a complete 6-year warranty, and all of the bathrooms have radiant heated floors. Enjoy the private fully fenced backyard with a patio area to enjoy your morning coffee. There is a one-car garage with ample off-the-street parking. This home is a true show-stopper, a must-see!



Kathy Goodman
 720-985-1701
 kathygoodman33@gmail.com



Scan code
 for more
 property
 details



801 Steele Street, Denver, CO 80206 – Main Level



GROSS INTERNAL AREA
FLOOR 1: 940 sq. ft, FLOOR 2: 1650 sq. ft
FLOOR 3: 642 sq. ft, EXCLUDED AREAS:
GARAGE: 235 sq. ft, DECK: 18 sq. ft
PATIO: 28 sq. ft, PORCH: 131 sq. ft
TOTAL: 3231 sq. ft
SIZES AND DIMENSIONS ARE APPROXIMATE, ACTUAL MAY VARY.

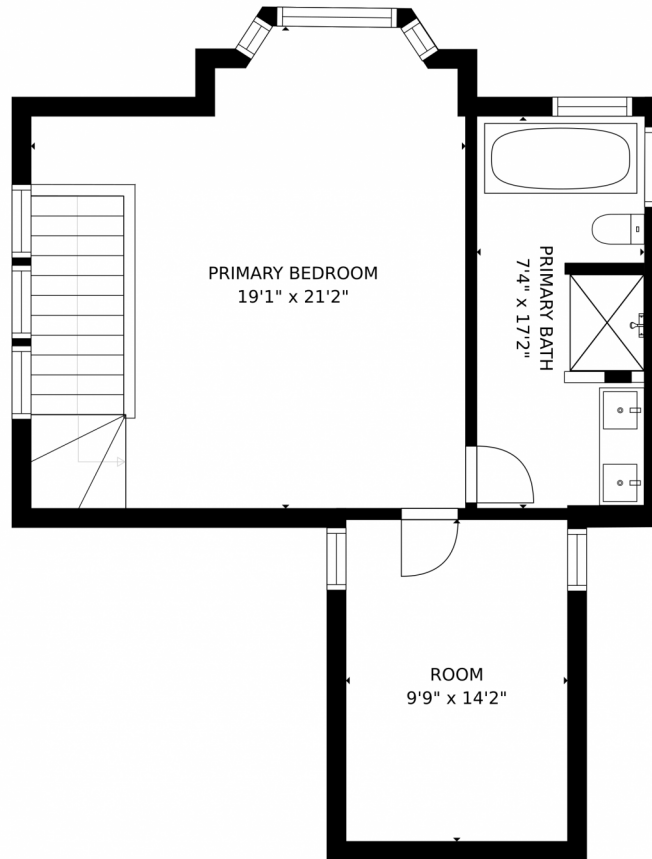


Disclaimer: Sizes and Dimensions are Approximate, Actual May Vary.



Kathy Goodman
720-985-1701
kathygoodman33@gmail.com





GROSS INTERNAL AREA
FLOOR 1: 940 sq. ft, FLOOR 2: 1650 sq. ft
FLOOR 3: 642 sq. ft, EXCLUDED AREAS:
GARAGE: 235 sq. ft, DECK: 18 sq. ft
PATIO: 28 sq. ft, PORCH: 131 sq. ft
TOTAL: 3231 sq. ft
SIZES AND DIMENSIONS ARE APPROXIMATE, ACTUAL MAY VARY.



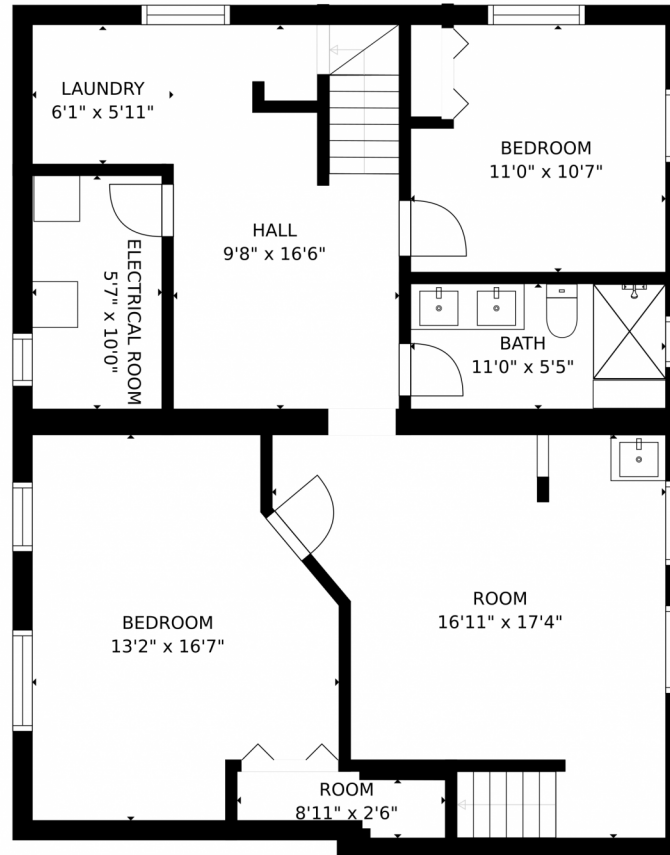
Disclaimer: Sizes and Dimensions are Approximate, Actual May Vary.



Kathy Goodman
720-985-1701
kathygoodman33@gmail.com



801 Steele Street, Denver, CO 80206 – Basement



GROSS INTERNAL AREA
FLOOR 1: 940 sq. ft., FLOOR 2: 1650 sq. ft.
FLOOR 3: 642 sq. ft., EXCLUDED AREAS:
GARAGE: 235 sq. ft., DECK: 18 sq. ft.
PATIO: 28 sq. ft., PORCH: 131 sq. ft.
TOTAL: 3231 sq. ft.
SIZES AND DIMENSIONS ARE APPROXIMATE, ACTUAL MAY VARY.

Disclaimer: Sizes and Dimensions are Approximate, Actual May Vary.



Kathy Goodman
720-985-1701
kathygoodman33@gmail.com



Scan code
for more
property
details

801 Steele Street, Denver, CO 80206 – All Levels



GROSS INTERNAL AREA
FLOOR 1: 940 sq. ft, FLOOR 2: 1650 sq. ft
FLOOR 3: 642 sq. ft, EXCLUDED AREAS:
GARAGE: 235 sq. ft, DECK: 18 sq. ft
PATIO: 28 sq. ft, PORCH: 131 sq. ft
TOTAL: 3231 sq. ft
SIZES AND DIMENSIONS ARE APPROXIMATE, ACTUAL MAY VARY.



Disclaimer: Sizes and Dimensions are Approximate, Actual May Vary.



Kathy Goodman
720-985-1701
kathygoodman33@gmail.com

