



2646 Autumn Ridge
 Lafayette, CO 80026
 COMMUNITY: South Pointe

MLS # 969839

PRICE
 \$1,075,000



Single Family



4260 SQFT



6 Beds



3/1 Baths



3 Car



0.21 Acre

PROPERTY DETAILS

Lafayette's hidden gem of a neighborhood. Home is steps to the private, neighborhood pool and beautiful Whitetail park. Open space to enjoy to the West and convenient access to schools, Hwy. 287 and E 470. Floor plan provides space for everyone: main floor study, 4 generous sized bedrooms upstairs, a beautiful finished basement with bar area, rec. room and 2 additional bedrooms.



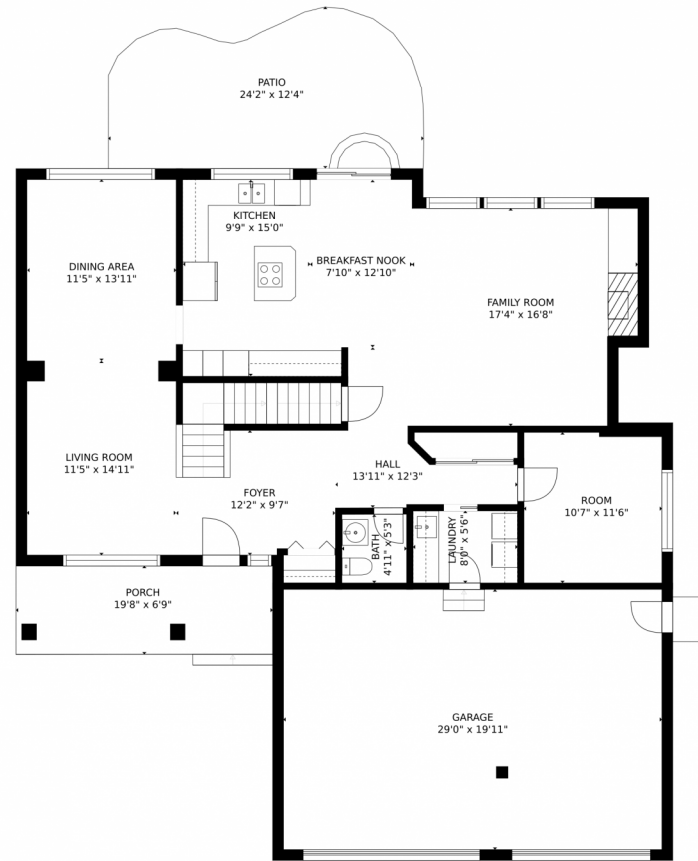
Kelly Majure
 303-709-8613
 kellym@elevatedrealestate.com



Scan code
 for more
 property
 details



2646 Autumn Ridge, Lafayette, CO 80026 – Main Level



GROSS INTERNAL AREA
FLOOR 1: 1309 sq. ft. FLOOR 2: 1369 sq. ft.
FLOOR 3: 1188 sq. ft. EXCLUDED AREAS:
GARAGE: 578 sq. ft. PATIO: 254 sq. ft.
PORCH: 133 sq. ft.
TOTAL: 3866 sq. ft.
SIZES AND DIMENSIONS ARE APPROXIMATE, ACTUAL MAY VARY.



Disclaimer: Sizes and Dimensions are Approximate, Actual May Vary.



Kelly Majure
303-709-8613
kellym@elevatedrealestate.com



2646 Autumn Ridge, Lafayette, CO 80026 – Upper Level



GROSS INTERNAL AREA
FLOOR 1: 1309 sq. ft. FLOOR 2: 1369 sq. ft.
FLOOR 3: 1188 sq. ft. EXCLUDED AREAS:
GARAGE: 578 sq. ft. PATIO: 254 sq. ft.
PORCH: 133 sq. ft.
TOTAL: 3866 sq. ft.
SIZES AND DIMENSIONS ARE APPROXIMATE, ACTUAL MAY VARY.



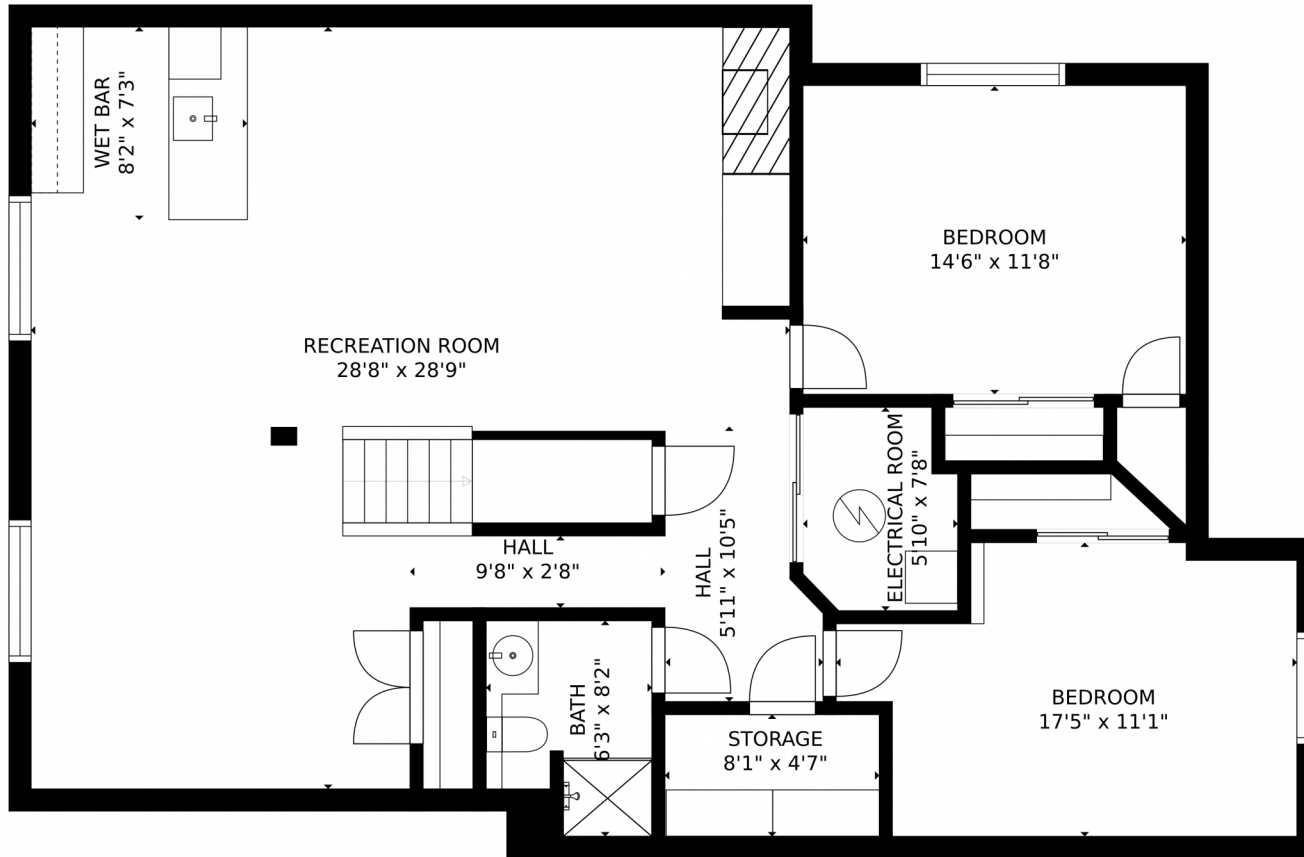
Disclaimer: Sizes and Dimensions are Approximate, Actual May Vary.



Kelly Majure
303-709-8613
kellym@elevatedrealestate.com



2646 Autumn Ridge, Lafayette, CO 80026 – Lower Level



GROSS INTERNAL AREA
FLOOR 1: 1309 sq. ft. FLOOR 2: 1369 sq. ft.
FLOOR 3: 1188 sq. ft. EXCLUDED AREAS:
GARAGE: 578 sq. ft. PATIO: 254 sq. ft.
PORCH: 133 sq. ft.
TOTAL: 3866 sq. ft.
SIZES AND DIMENSIONS ARE APPROXIMATE, ACTUAL MAY VARY.



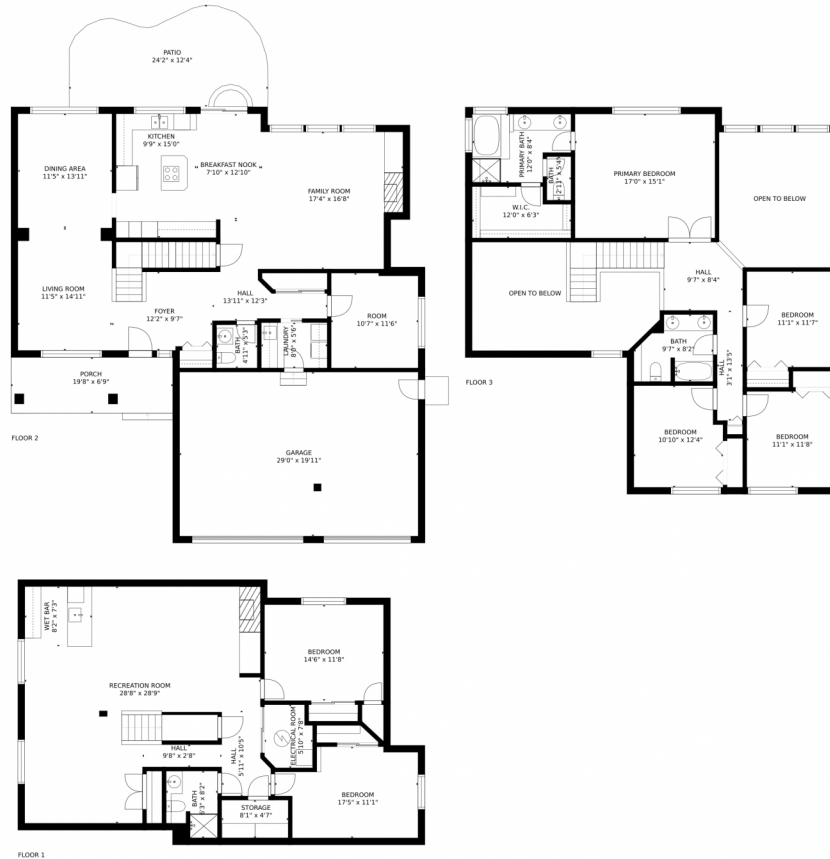
Disclaimer: Sizes and Dimensions are Approximate, Actual May Vary.



Kelly Majure
303-709-8613
kellym@elevatedrealestate.com



2646 Autumn Ridge, Lafayette, CO 80026 – All Levels



GROSS INTERNAL AREA
 FLOOR 1: 1309 sq. ft. FLOOR 2: 1369 sq. ft.
 FLOOR 3: 1188 sq. ft. EXCLUDED AREAS:
 GARAGE: 578 sq. ft. PATIO: 254 sq. ft.
 PORCH: 133 sq. ft.
 TOTAL: 3866 sq. ft.
 SIZES AND DIMENSIONS ARE APPROXIMATE, ACTUAL MAY VARY.



Disclaimer: Sizes and Dimensions are Approximate, Actual May Vary.



Kelly Majure
 303-709-8613
 kellym@elevatedrealestate.com

