

Single Family



3332 SQFT



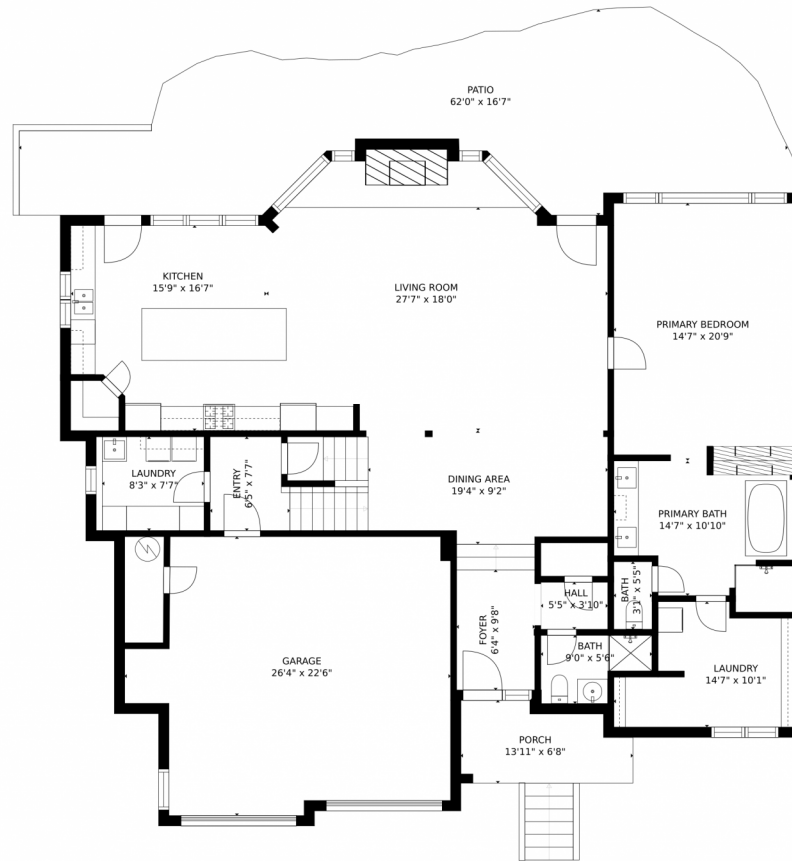
Laura Karden
970-389-1543
laura@idealascent.com



Scan code
for more
property
details



162 Penstemon Road, Keystone, CO 80435 – Main Level



GROSS INTERNAL AREA
FLOOR 1: 1973 sq. ft. FLOOR 2: 1260 sq. ft.
EXCLUDED AREAS: , GARAGE: 512 sq. ft.
PATIO: 646 sq. ft. PORCH: 79 sq. ft.
TOTAL: 3233 sq. ft.
SIZES AND DIMENSIONS ARE APPROXIMATE, ACTUAL MAY VARY.



Disclaimer: Sizes and Dimensions are Approximate, Actual May Vary.



Laura Karden
970-389-1543
laura@idealascent.com



162 Penstemon Road, Keystone, CO 80435 – 2nd Level



GROSS INTERNAL AREA
FLOOR 1: 1973 sq. ft. FLOOR 2: 1260 sq. ft.
EXCLUDED AREAS: , GARAGE: 512 sq. ft.
PATIO: 646 sq. ft. PORCH: 79 sq. ft.
TOTAL: 3233 sq. ft.
SIZES AND DIMENSIONS ARE APPROXIMATE, ACTUAL MAY VARY.



Disclaimer: Sizes and Dimensions are Approximate, Actual May Vary.



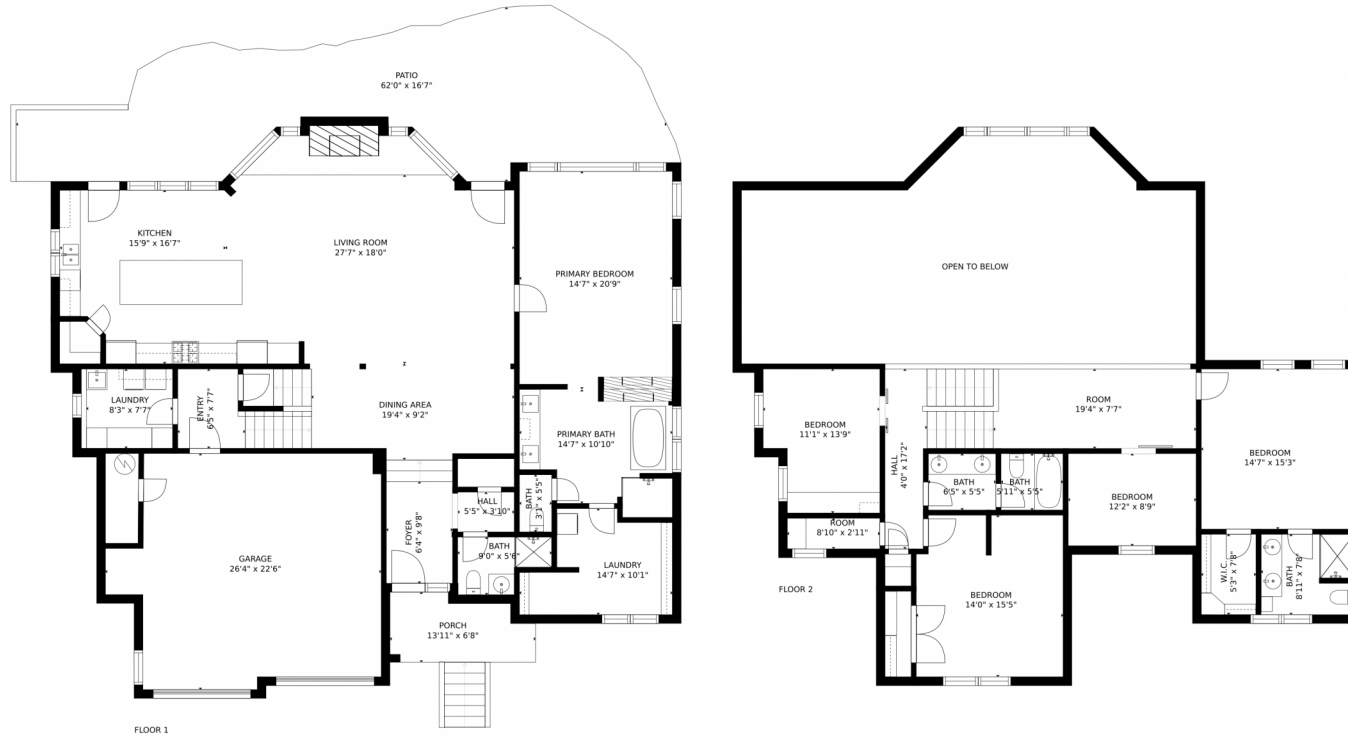
Laura Karden
970-389-1543
laura@idealascent.com



Scan code for more property details

A QR code is provided for scanning to access more property details. To the left of the QR code is a small icon of a smartphone displaying a list of items.

162 Penstemon Road, Keystone, CO 80435 – All Levels



GROSS INTERNAL AREA
FLOOR 1: 1973 sq. ft, FLOOR 2: 1260 sq. ft
EXCLUDED AREAS: , GARAGE: 512 sq. ft
PATIO: 646 sq. ft, PORCH: 79 sq. ft
TOTAL: 3233 sq. ft
SIZES AND DIMENSIONS ARE APPROXIMATE, ACTUAL MAY VARY.



Disclaimer: Sizes and Dimensions are Approximate, Actual May Vary.



Laura Karden
970-389-1543
laura@idealascent.com

