



1224 Lodgepole Drive  
Evergreen, CO 80439



Single Family



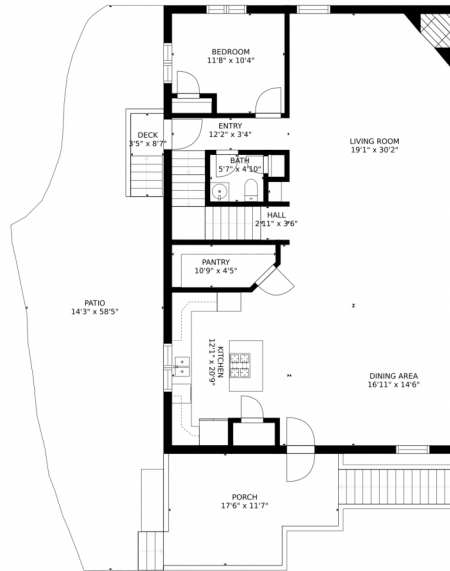
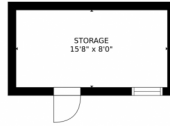
3384 SQFT

Katie Crowe  
808-990-1367  
denvercrowe@gmail.com



Scan code  
for more  
property  
details

# 1224 Lodgepole Drive, Evergreen, CO 80439 – Main Level



GROSS INTERNAL AREA  
FLOOR 1: 571 sq. ft, FLOOR 2: 1424 sq. ft  
FLOOR 3: 1299 sq. ft, EXCLUDED AREAS:  
GARAGE: 498 sq. ft, DECK: 30 sq. ft  
PATIO: 659 sq. ft, PORCH: 237 sq. ft  
BALCONY: 135 sq. ft  
TOTAL: 3294 sq. ft  
SIZES AND DIMENSIONS ARE APPROXIMATE, ACTUAL MAY VARY.

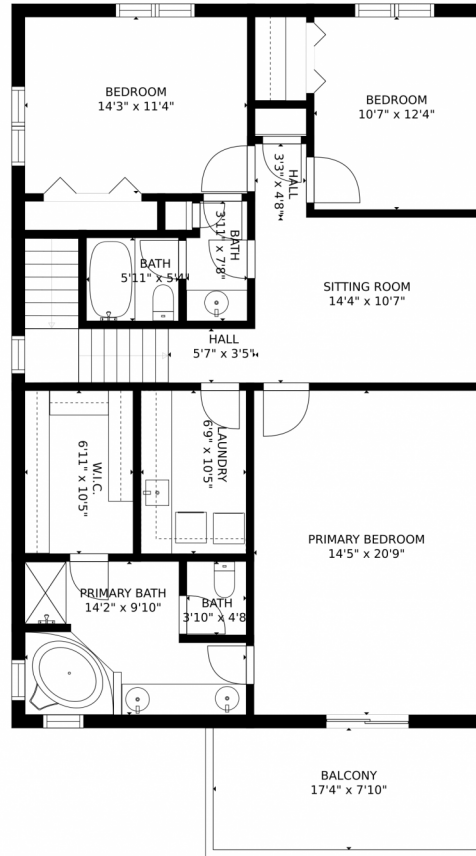


Disclaimer: Sizes and Dimensions are Approximate, Actual May Vary.

Katie Crowe  
808-990-1367  
denvercrowe@gmail.com



# 1224 Lodgepole Drive, Evergreen, CO 80439 – 2nd Level



GROSS INTERNAL AREA  
FLOOR 1: 571 sq. ft, FLOOR 2: 1424 sq. ft  
FLOOR 3: 1299 sq. ft, EXCLUDED AREAS:  
GARAGE: 498 sq. ft, DECK: 30 sq. ft  
PATIO: 659 sq. ft, PORCH: 237 sq. ft  
BALCONY: 135 sq. ft  
TOTAL: 3294 sq. ft  
SIZES AND DIMENSIONS ARE APPROXIMATE, ACTUAL MAY VARY.

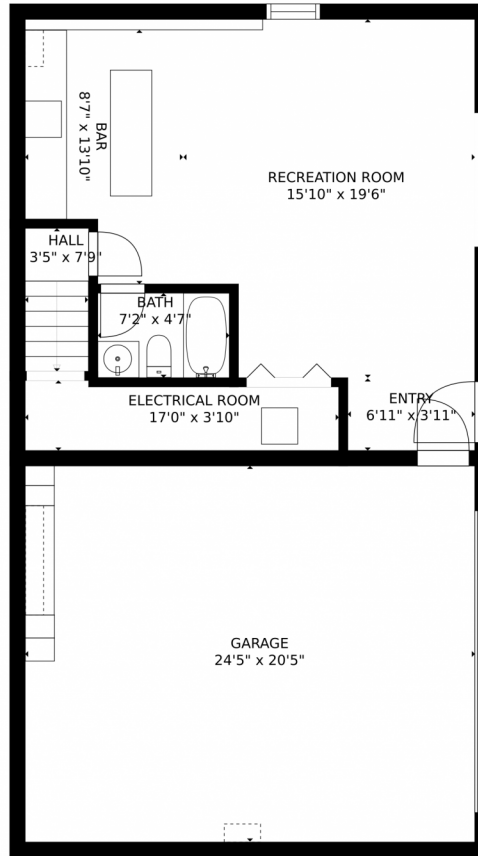


Disclaimer: Sizes and Dimensions are Approximate, Actual May Vary.

Katie Crowe  
808-990-1367  
denvercrowe@gmail.com



# 1224 Lodgepole Drive, Evergreen, CO 80439 – Lower Level



GROSS INTERNAL AREA  
FLOOR 1: 571 sq. ft, FLOOR 2: 1424 sq. ft  
FLOOR 3: 1299 sq. ft, EXCLUDED AREAS:  
GARAGE: 498 sq. ft, DECK: 30 sq. ft  
PATIO: 659 sq. ft, PORCH: 237 sq. ft  
BALCONY: 135 sq. ft  
TOTAL: 3294 sq. ft  
SIZES AND DIMENSIONS ARE APPROXIMATE, ACTUAL MAY VARY.

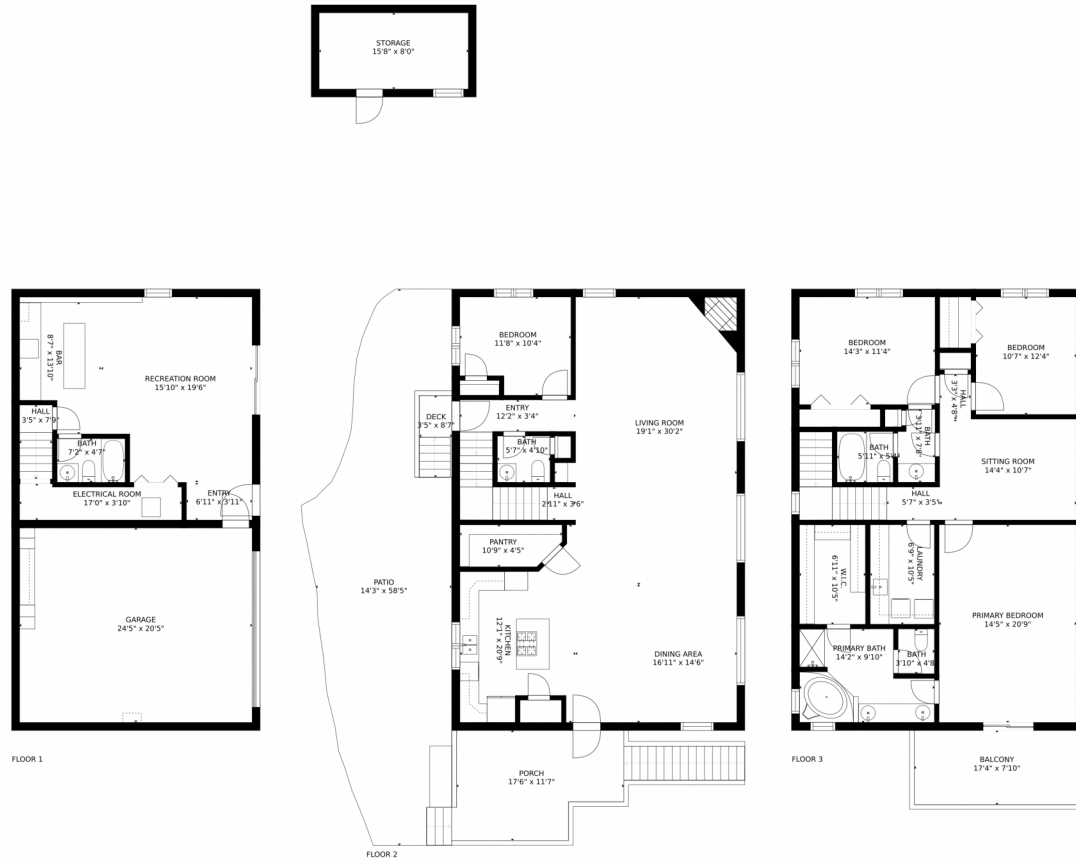


Disclaimer: Sizes and Dimensions are Approximate, Actual May Vary.

Katie Crowe  
808-990-1367  
denvercrowe@gmail.com



# 1224 Lodgepole Drive, Evergreen, CO 80439 – All Levels



GROSS INTERNAL AREA  
FLOOR 1: 571 sq. ft, FLOOR 2: 1424 sq. ft  
FLOOR 3: 1299 sq. ft, EXCLUDED AREAS:  
GARAGE: 498 sq. ft, DECK: 30 sq. ft  
PATIO: 659 sq. ft, PORCH: 237 sq. ft  
BALCONY: 135 sq. ft  
TOTAL: 3294 sq. ft  
SIZES AND DIMENSIONS ARE APPROXIMATE, ACTUAL MAY VARY.



Disclaimer: Sizes and Dimensions are Approximate, Actual May Vary.

Katie Crowe  
808-990-1367  
denvercrowe@gmail.com

