


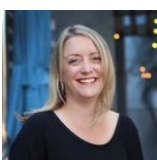
 Single Family  
  2126 SQFT  
  3 Beds  
  2/1 Baths  
  2 Car  
  0.47 Acre

## PROPERTY DETAILS

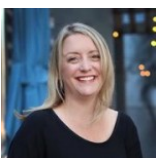
VIEWS, VIEWS, VIEWS!! Escape to your very own mountain retreat at the end of a cul-de-sac in the Kings Valley W Subdivision. This unique home has vaulted ceilings and floor to ceiling windows. The kitchen has been remodeled with custom Danish Red Cedar European cabinetry, granite counters, a built-in refrigerator, dishwasher, and fireplace, has access to one of three decks, and overlooks a sunken great room with an efficient Quadra Fire fireplace. The main level features Brazilian Cherry hardwood floors throughout. The open staircase leads to the bedrooms upstairs. The primary bedroom includes a remodeled ensuite bathroom with a custom built-in closet and tile work. The additional bathroom upstairs has also been remodeled with a modern touch. The lower level that is perfect for a family or theater room, has an additional gas fireplace, storage, and a work bench with additional storage cabinets. New paint throughout, as well as new carpet in the great room, stairs, hallway upstairs and two bedrooms. Garage includes additional storage cabinets. Home comes with a new washer/dryer, cement fiber siding, a lower redwood deck, upper deck with newer composite decking and cable railing to enjoy the amazing views of Buffalo Creek and Pikes Peak, and a flagstone patio/sitting area perfect for an evening firepit! A rare-find on public water and sewer! Road to home is publicly maintained. Just minutes to schools, shopping and Staunton State Park. Make this one your



**Jennifer Goslau**  
 303-489-4553  
 jennifergoslau@madisonprops.com



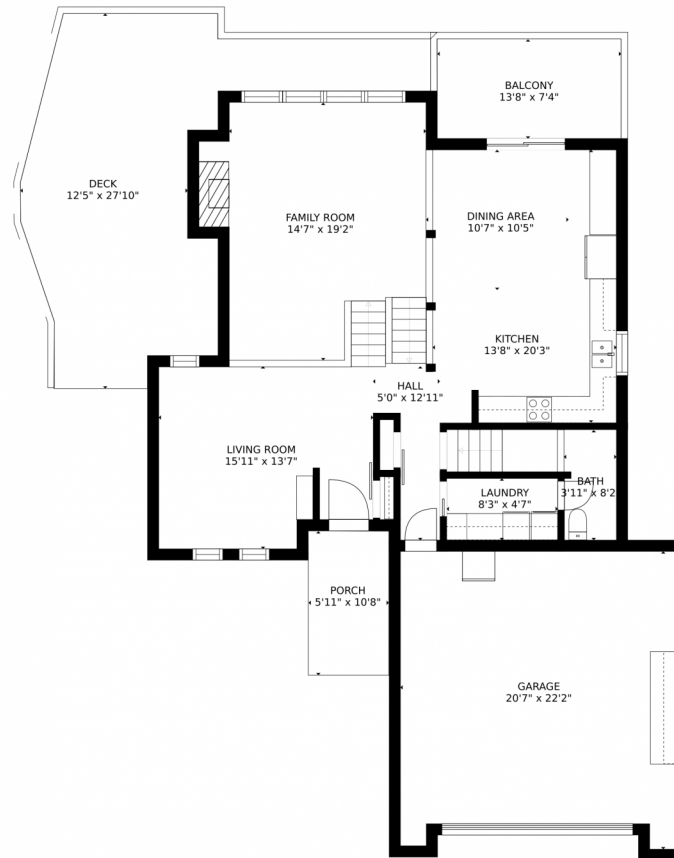
mountain home!!



**Jennifer Goslau**  
303-489-4553  
jennifergoslau@madisonprops.com



# 31228 Kings Valley W, Conifer, CO 80433 – Main



GROSS INTERNAL AREA  
FLOOR 1: 422 sq. ft, FLOOR 2: 962 sq. ft  
FLOOR 3: 844 sq. ft, EXCLUDED AREAS:  
BALCONY: 101 sq. ft, DECK: 397 sq. ft  
PORCH: 64 sq. ft, GARAGE: 423 sq. ft  
TOTAL: 2228 sq. ft  
SIZES AND DIMENSIONS ARE APPROXIMATE, ACTUAL MAY VARY.

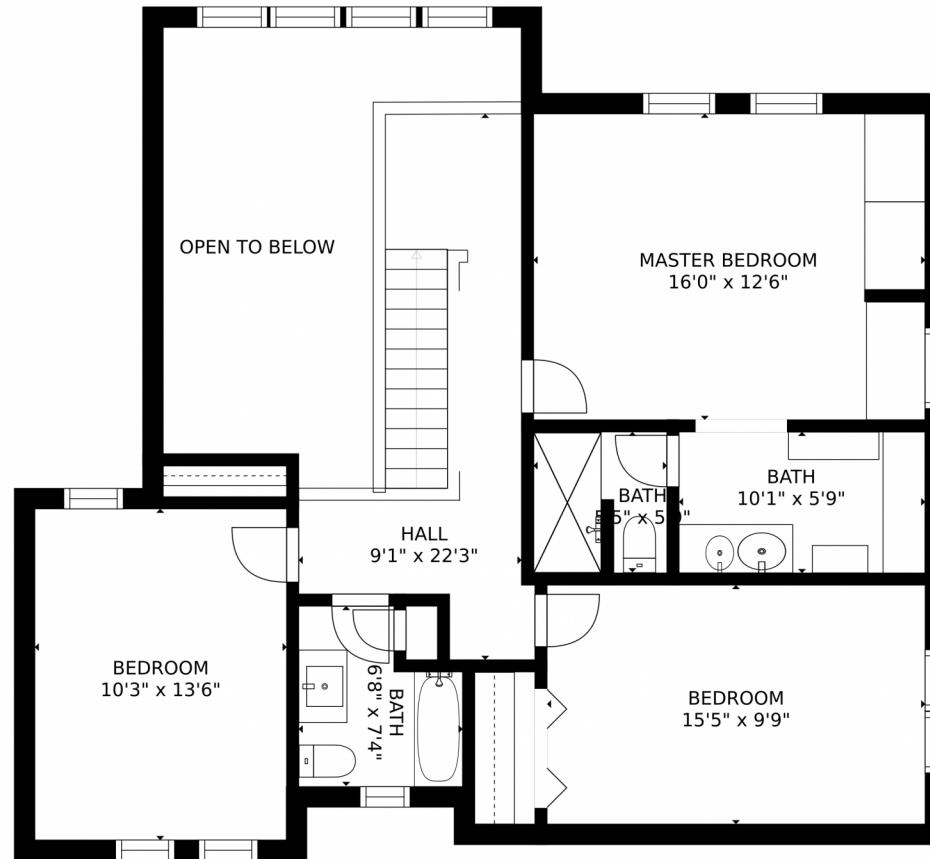
Disclaimer: Sizes and Dimensions are Approximate, Actual May Vary.



**Jennifer Goslau**  
303-489-4553  
jennifergoslau@madisonprops.com

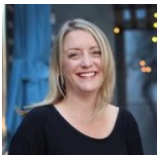


# 31228 Kings Valley W, Conifer, CO 80433 – 2nd Level



GROSS INTERNAL AREA  
FLOOR 1: 422 sq. ft. FLOOR 2: 962 sq. ft.  
FLOOR 3: 844 sq. ft. EXCLUDED AREAS:  
BALCONY: 101 sq. ft. DECK: 397 sq. ft.  
PORCH: 64 sq. ft. GARAGE: 423 sq. ft.  
TOTAL: 2228 sq. ft.  
SIZES AND DIMENSIONS ARE APPROXIMATE, ACTUAL MAY VARY.

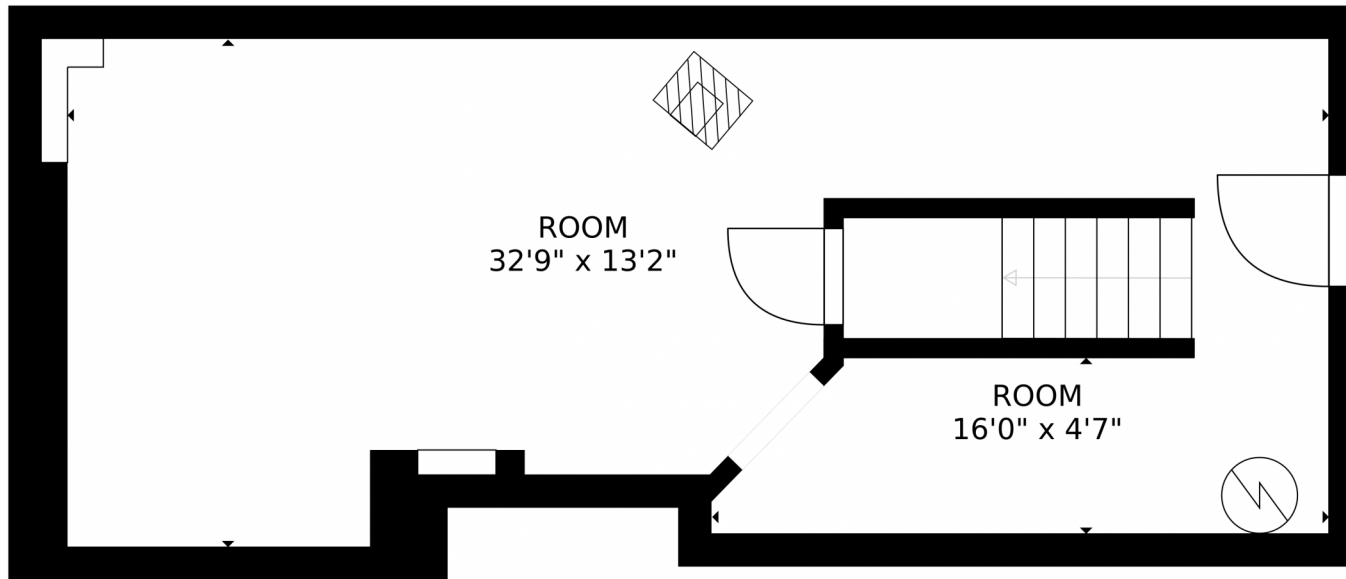
Disclaimer: Sizes and Dimensions are Approximate, Actual May Vary.



**Jennifer Goslau**  
303-489-4553  
jennifergoslau@madisonprops.com







GROSS INTERNAL AREA  
FLOOR 1: 422 sq. ft, FLOOR 2: 962 sq. ft  
FLOOR 3: 844 sq. ft, EXCLUDED AREAS:  
BALCONY: 101 sq. ft, DECK: 397 sq. ft  
PORCH: 64 sq. ft, GARAGE: 423 sq. ft  
TOTAL: 2228 sq. ft  
SIZES AND DIMENSIONS ARE APPROXIMATE, ACTUAL MAY VARY.

Disclaimer: Sizes and Dimensions are Approximate, Actual May Vary.



**Jennifer Goslau**  
303-489-4553  
jennifergoslau@madisonprops.com



Scan code  
for more  
property  
details

# 31228 Kings Valley W, Conifer, CO 80433 — All Levels



GROSS INTERNAL AREA  
FLOOR 1: 422 sq. ft, FLOOR 2: 962 sq. ft  
FLOOR 3: 844 sq. ft, EXCLUDED AREAS:  
BALCONY: 101 sq. ft, DECK: 397 sq. ft  
PORCH: 64 sq. ft, GARAGE: 423 sq. ft  
TOTAL: 2228 sq. ft  
SIZES AND DIMENSIONS ARE APPROXIMATE, ACTUAL MAY VARY.

Disclaimer: Sizes and Dimensions are Approximate, Actual May Vary.



Jennifer Goslau  
303-489-4553  
jennifergoslau@madisonprops.com



Scan code  
for more  
property  
details