



5208 Spruce Avenue
 West Palm Beach, FL 33407
 COMMUNITY: NORTH PALM BCH 3

MLS
 # R10643295
 PRICE \$298,000



Other



1939 SQFT



0.17 Acre

PROPERTY DETAILS

Great income earner just one block off Flagler! CBS legal duplex with 2/2 and 1/1. 2/2 has two living areas, so potential to make it a 3/2 with minimal work. Property is fully rented, in good condition with original hardwoods. No limit on potential...Unique location so close to Flagler and the intracoastal allows you to upgrade the units for increased income if desired.

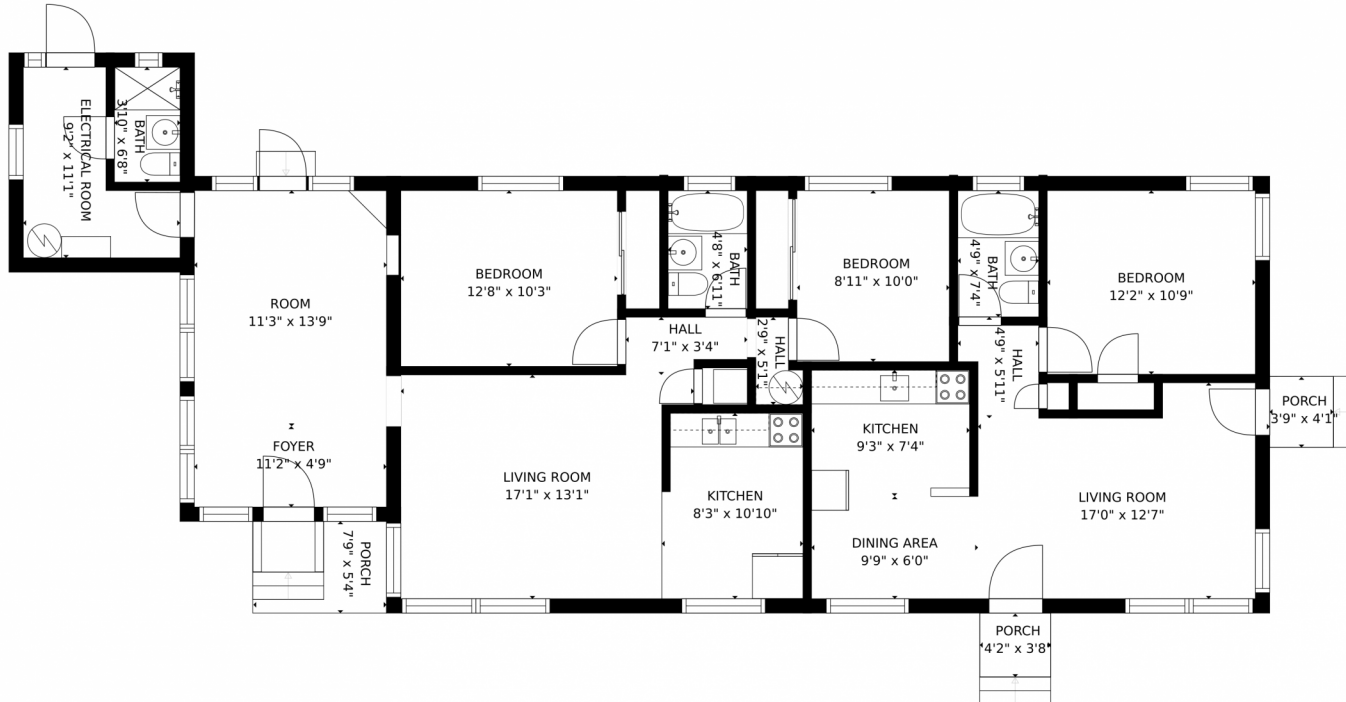


Rich Heers
 561-718-5999
 rheers@yahoo.com



Scan code
 for more
 property
 details





GROSS INTERNAL AREA
FLOOR 1: 1516 sq. ft. EXCLUDED AREAS:
PORCH: 72 sq. ft
TOTAL: 1516 sq. ft
SIZES AND DIMENSIONS ARE APPROXIMATE, ACTUAL MAY VARY.



Disclaimer: Sizes and Dimensions are Approximate, Actual May Vary.



Rich Heers
561-718-5999
rheers@yahoo.com



Scan code
for more
property
details