



6552 Iris Street
 Arvada, CO 80004
 COMMUNITY: Alta Vista

MLS # 2440220
 PRICE \$675,000



Single Family 2222 SQFT 4 Beds 2/1 Baths 4 Car 0.18 Acre

PROPERTY DETAILS

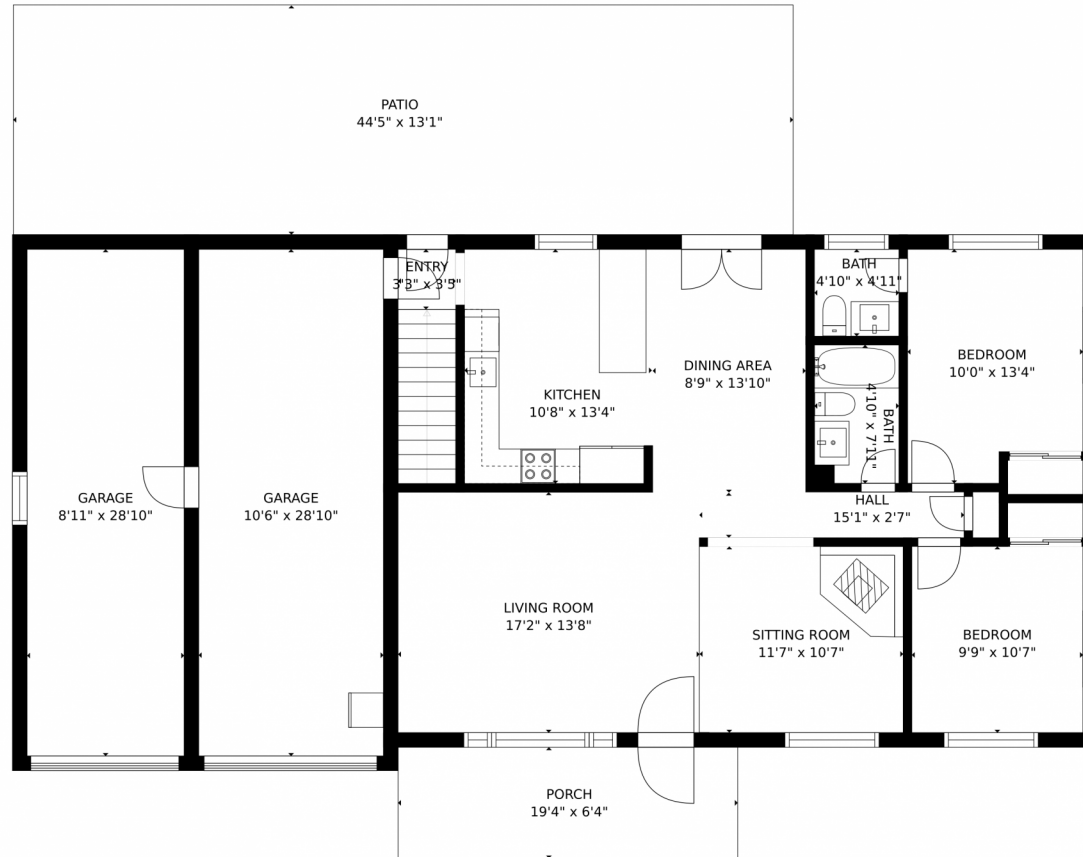
Welcome home to Arvada! This beautiful brick ranch + fully updated home is located in the highly desirable Alta Vista neighborhood, and is the perfect place to relax, entertain, and enjoy everything you love about living in Colorado. Walking through the front yard you'll find ever-stone side walk, flower gardens, and a mature yard with sprinkler system. Opening the front door, you're greeted by a main level living space with step up sitting area and fireplace, the perfect place to start the day with a cup of coffee as you watch the sunrise. Your light + bright kitchen is the ideal place to host happy hour, with your guests gathered in the dining space or just outside the french doors on the patio while you whip up appetizers on your brand new stainless appliances. The quiet primary suite is tucked in the back of the home facing the yard, featuring a completely redone half bath. Finish the day on the covered patio and enjoy the gardens, grape vines, and privacy. 4 car tandem garage, RV space with plug in and shed plenty of space for all of your toys. With Independence + Fitzmorris Park, loads of trails, and Olde Town Arvada just blocks away, your next adventure is never far. This home is a commuter's dream with easy access to I-70 + the RTD rail line. You're going to LOVE living here!



Becky Elhardt
 303-709-3828
 becky.e@westandmainhomes.com
<https://www.westandmain.co/becky-elhardt>



6552 Iris Street, Arvada, CO 80004 – Main Level



GROSS INTERNAL AREA
FLOOR 1: 972 sq. ft, FLOOR 2: 1074 sq. ft
EXCLUDED AREAS: , GARAGE: 562 sq. ft
PATIO: 581 sq. ft, PORCH: 123 sq. ft
TOTAL: 2047 sq. ft
SIZES AND DIMENSIONS ARE APPROXIMATE, ACTUAL MAY VARY.

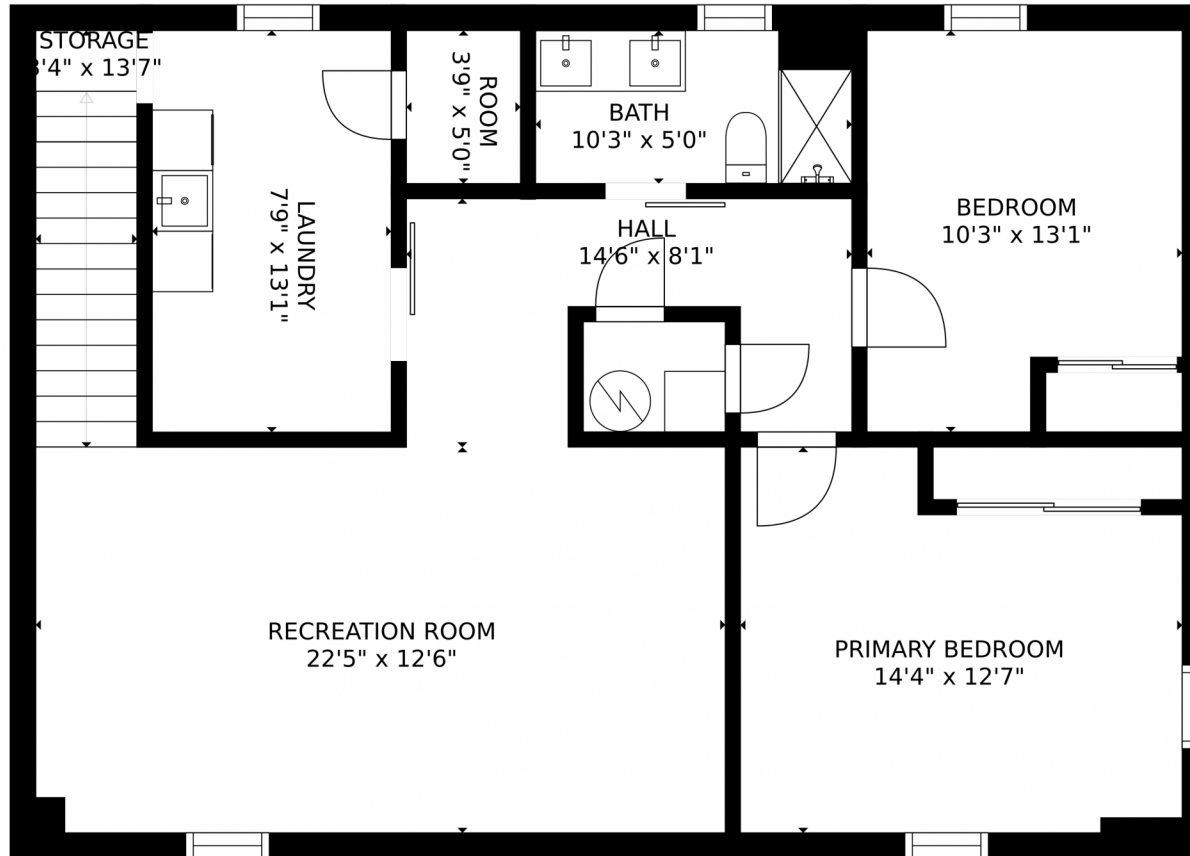


Disclaimer: Sizes and Dimensions are Approximate, Actual May Vary.



Becky Elhardt
303-709-3828
becky.e@westandmainhomes.com
<https://www.westandmain.co/becky-elhardt>





GROSS INTERNAL AREA
FLOOR 1: 972 sq. ft, FLOOR 2: 1074 sq. ft
EXCLUDED AREAS: , GARAGE: 562 sq. ft
PATIO: 581 sq. ft, PORCH: 123 sq. ft
TOTAL: 2047 sq. ft
SIZES AND DIMENSIONS ARE APPROXIMATE, ACTUAL MAY VARY.



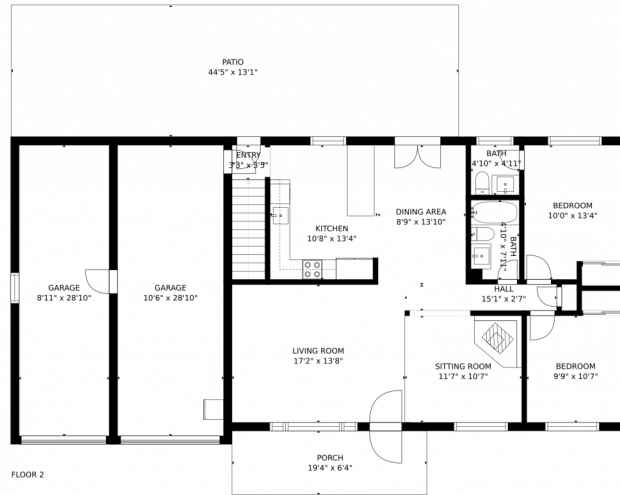
Disclaimer: Sizes and Dimensions are Approximate, Actual May Vary.



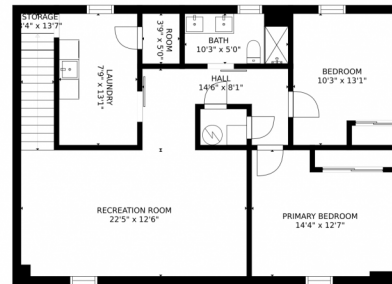
Becky Elhardt
303-709-3828
becky.e@westandmainhomes.com
<https://www.westandmain.co/becky-elhardt>



6552 Iris Street, Arvada, CO 80004 – All Levels



FLOOR 2



FLOOR 1

GROSS INTERNAL AREA
FLOOR 1: 972 sq. ft, FLOOR 2: 1074 sq. ft
EXCLUDED AREAS: , GARAGE: 562 sq. ft
PATIO: 581 sq. ft, PORCH: 123 sq. ft
TOTAL: 2047 sq. ft
SIZES AND DIMENSIONS ARE APPROXIMATE, ACTUAL MAY VARY.



Disclaimer: Sizes and Dimensions are Approximate, Actual May Vary.



Becky Elhardt
303-709-3828
becky.e@westandmainhomes.com
<https://www.westandmain.co/becky-elhardt>

