



316 E. Elm
 Lafayette, CO 80026
 COMMUNITY: First Union

MLS # 970347



Single Family



3014 SQFT



4 Beds



3/1 Baths



3 Car



0.16 Acre



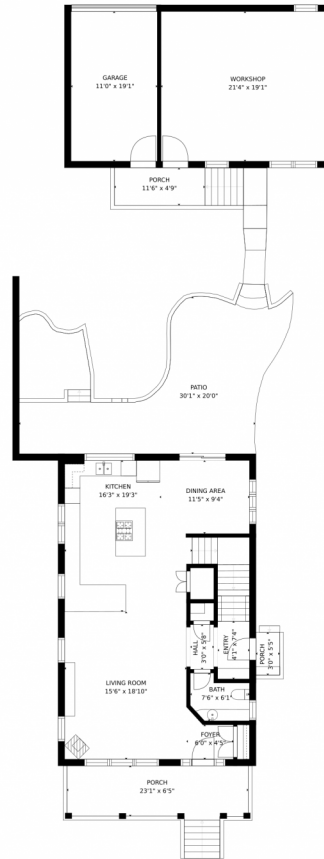
Kelly Majure
 303-709-8613
 kellym@elevatedrealestate.com



Scan code
 for more
 property
 details



316 E. Elm, Lafayette, CO 80026 – 1st Floor



GROSS INTERNAL AREA
FLOOR 1: 879 sq. ft., FLOOR 2: 1305 sq. ft.
FLOOR 3: 898 sq. ft., EXCLUDED AREAS:
GARAGE: 210 sq. ft., PATIO: 513 sq. ft.
PORCH: 268 sq. ft.
TOTAL: 3082 sq. ft.
SIZES AND DIMENSIONS ARE APPROXIMATE, ACTUAL MAY VARY.



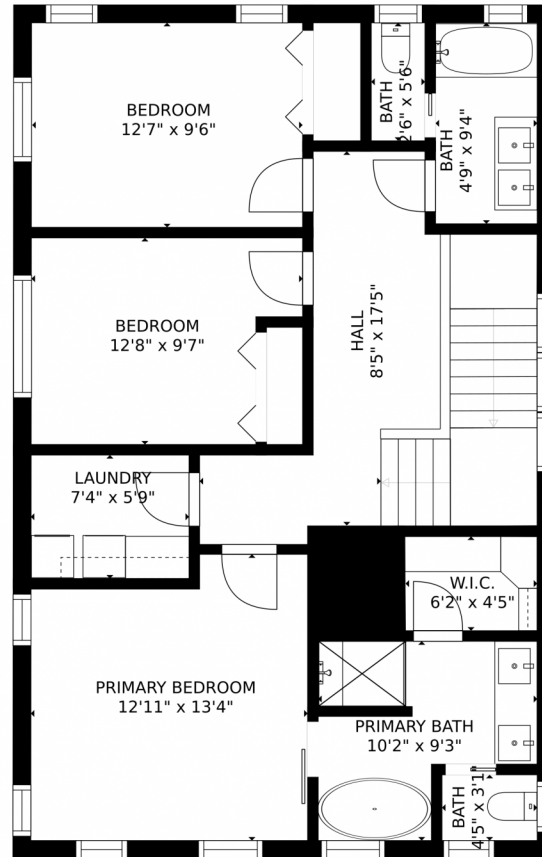
Disclaimer: Sizes and Dimensions are Approximate, Actual May Vary.



Kelly Majure
303-709-8613
kellym@elevatedrealestate.com



Scan code for more property details



GROSS INTERNAL AREA
FLOOR 1: 879 sq. ft., FLOOR 2: 1305 sq. ft.
FLOOR 3: 898 sq. ft., EXCLUDED AREAS:
GARAGE: 210 sq. ft., PATIO: 513 sq. ft.
PORCH: 268 sq. ft.
TOTAL: 3082 sq. ft.
SIZES AND DIMENSIONS ARE APPROXIMATE, ACTUAL MAY VARY.



Disclaimer: Sizes and Dimensions are Approximate, Actual May Vary.



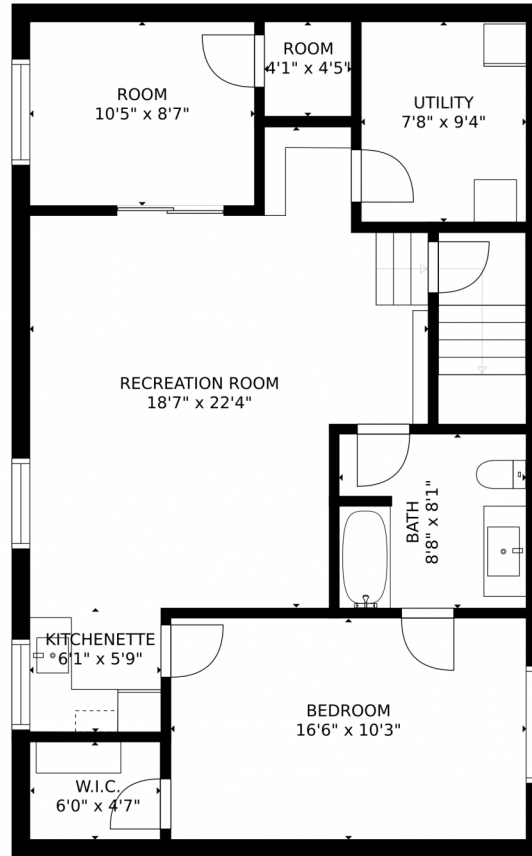
Kelly Majure
303-709-8613
kellym@elevatedrealestate.com



Scan code
for more
property
details



316 E. Elm, Lafayette, CO 80026 — Basement



GROSS INTERNAL AREA
FLOOR 1: 879 sq. ft., FLOOR 2: 1305 sq. ft.
FLOOR 3: 898 sq. ft., EXCLUDED AREAS:
GARAGE: 210 sq. ft., PATIO: 513 sq. ft.
PORCH: 268 sq. ft.
TOTAL: 3082 sq. ft.
SIZES AND DIMENSIONS ARE APPROXIMATE, ACTUAL MAY VARY.



Disclaimer: Sizes and Dimensions are Approximate, Actual May Vary.



Kelly Majure
303-709-8613
kellym@elevatedrealestate.com



316 E. Elm, Lafayette, CO 80026 – All Floors



GROSS INTERNAL AREA
FLOOR 1: 879 sq. ft., FLOOR 2: 1305 sq. ft.
FLOOR 3: 898 sq. ft., EXCLUDED AREAS:
GARAGE: 210 sq. ft., PATIO: 513 sq. ft.
PORCH: 268 sq. ft.
TOTAL: 3082 sq. ft.
SIZES AND DIMENSIONS ARE APPROXIMATE, ACTUAL MAY VARY.



Disclaimer: Sizes and Dimensions are Approximate, Actual May Vary.



Kelly Majure
303-709-8613
kellym@elevatedrealestate.com

