



Townhouse



1624 SQFT



2 Beds



1/1 Baths



2 Car



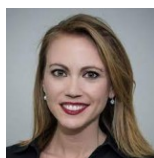
0.04 Acre

PROPERTY DETAILS

This property has an open feel to it, higher ceilings, a front courtyard and a private backyard that is fully fenced. Also included is a 2 car garage. Located in the Highly Coveted Cherry Creek School District. It has so many options you can do with it as it has a primary bedroom on the upper level with an office / flex space on the same level. The main floor has the kitchen, a half bath and an open dining area and family room large enough for entertaining along with a beautiful fireplace and sliding glass doors. The basement is finished with a non conforming bedroom along with the laundry room and a large closet. This property is perfect for a first time homebuyer, an investor or anyone that is looking to add just a little bit of personal touches to bring this property to it's full potential. Recently installed HVAC system with Humidifier and Added Insulation and recently installed an Energy Efficient Shower Head by Xcel Energy. Buyers - on an over or full priced offer, a \$2,000.00 flooring allowance will be given so that you can choose the type of flooring that best suits your needs. This truly is a rare diamond waiting for you to shine her up and call her Home. To have all this space and privacy along with a secure garage for 2 all for under \$400k is such a rare find, you do not want to miss this one!!! Hurry and book your showing today. Buyer and Buyers Agent to verify all information.



Rachel Wallace
716-440-8613
rachel@mynewera.com
<https://mynewera.com>



Casey Herzfeld
720-319-1575
caseysellscolorado@gmail.com



Scan code
for more
property
details

