



Single Family



3300 SQFT



3 Beds



3/1 Baths



6.88 Acre

## PROPERTY DETAILS

This gorgeous remodeled home is a slice of serene paradise in the beautiful Hangen Ranch neighborhood, known for lush horse properties and resplendent views. This fabulous home rests on 6.8 acres of lovely land, with gentle pasture, plentiful aspen trees, a stream and spring, and wonderful views. All the features are here for ideal foothills lifestyle ... a carefully tended fenced vegetable garden, 4 fenced small animal areas, horse pasture with quality hay, large stable, yoga/sleeping deck among the trees, firepit by the creek, and much more. Inside, you will be wowed by the stunning brand new kitchen with expansive quartz island, high-end appliances and a wonderful coffee/bar area. The modern kitchen is complemented by the pine accents and mountain feel throughout the house. This home is renovated to be off-grid if desired, including a JA Roby cookstove in the kitchen. Perfect for providing heat, or true wood fired pizza! Solar panels and 2 Tesla car chargers are two additional features for off-grid living. The dining, kitchen and bathrooms have heated flooring to keep things toasty in the winter and cool in the summer. The great room was also remodeled with gorgeous red oak flooring and a delightful reading nook. From the great room you can listen to the creek and look out at your horses in the pasture. And just step outside to the sunny deck overlooking your property for delightful, al fresco dining. Upstairs find a spacious primary suite with vaulted ceilings, beautiful views,



**Pandora & John Erlandson**

303-888-6298

[pandora@pandorajohnproperties.com](mailto:pandora@pandorajohnproperties.com)

<https://www.pandorajohnproperties.com>

Scan code  
for more  
property  
details



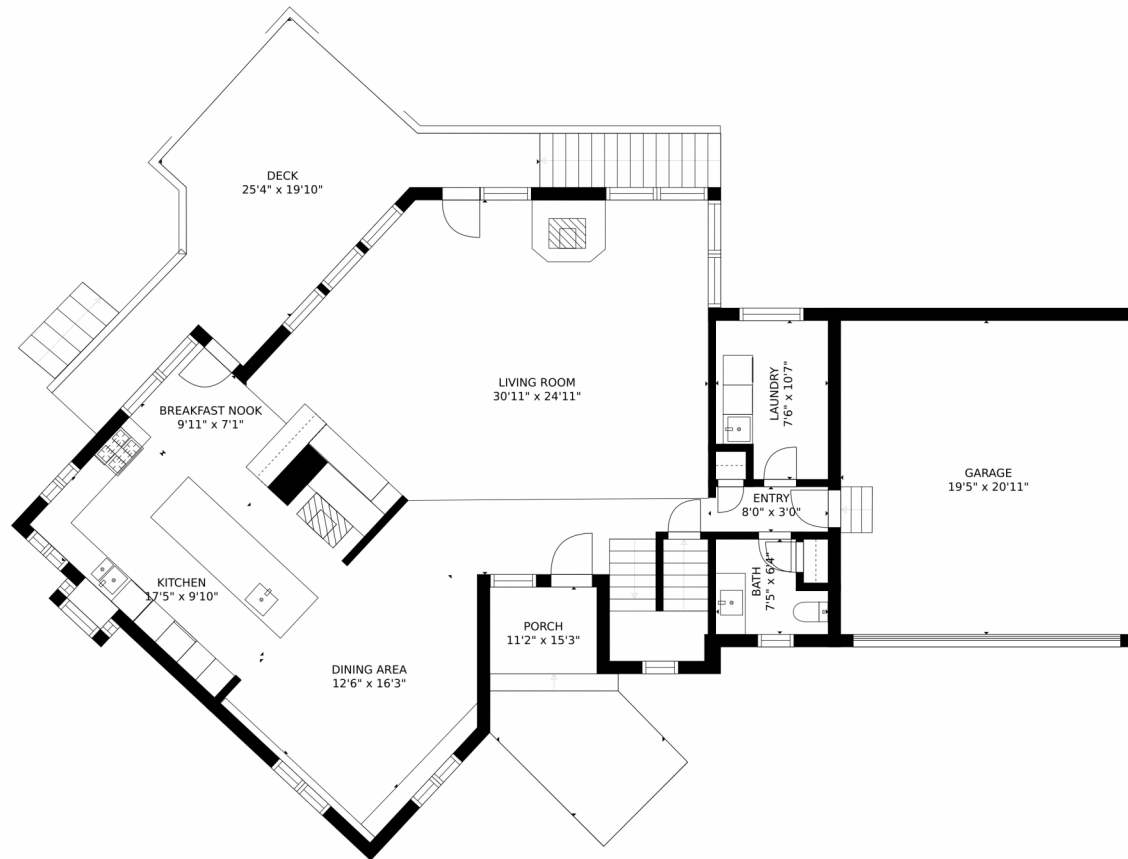
private deck and a remodeled bathroom. The walk-in closet is huge and you also have a darling flex space with a sleeping loft. All so very close to Evergreen amenities, and Alderfer Three Sisters Park. This home and property provides the perfect tranquil lifestyle, blending luxury & convenience with the bounty and beauty of the land.



**Pandora & John Erlandson**  
303-888-6298  
pandora@pandorajohnproperties.com  
<https://www.pandorajohnproperties.com>



# 6331 Bluebell Lane, Evergreen, CO 80439 – Main Level



GROSS INTERNAL AREA  
FLOOR 1: 1141 sq. ft, FLOOR 2: 1325 sq. ft  
FLOOR 3: 323 sq. ft, FLOOR 4: 604 sq. ft  
FLOOR 5: 1255 sq. ft, FLOOR 6: 36 sq. ft  
EXCLUDED AREAS: , GARAGE: 405 sq. ft  
DECK: 296 sq. ft, PORCH: 132 sq. ft  
PATIO: 229 sq. ft, BALCONY: 22 sq. ft  
TOTAL: 4685 sq. ft  
SIZES AND DIMENSIONS ARE APPROXIMATE, ACTUAL MAY VARY.



Disclaimer: Sizes and Dimensions are Approximate, Actual May Vary.



**Pandora & John Erlandson**

303-888-6298

[pandora@pandorajohnproperties.com](mailto:pandora@pandorajohnproperties.com)

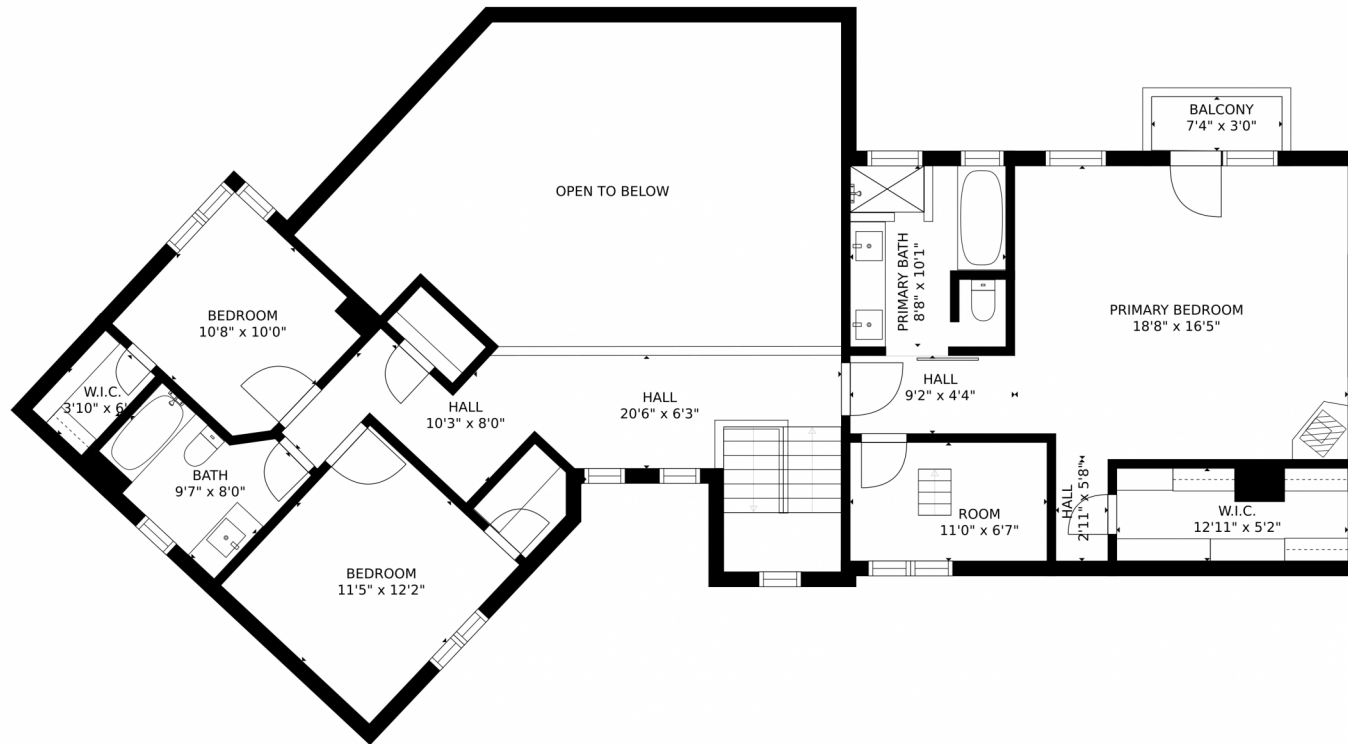
<https://www.pandorajohnproperties.com>



Scan code  
for more  
property  
details



# 6331 Bluebell Lane, Evergreen, CO 80439 – 2nd Level



GROSS INTERNAL AREA  
FLOOR 1: 1141 sq. ft, FLOOR 2: 1325 sq. ft  
FLOOR 3: 323 sq. ft, FLOOR 4: 604 sq. ft  
FLOOR 5: 1255 sq. ft, FLOOR 6: 36 sq. ft  
EXCLUDED AREAS: , GARAGE: 405 sq. ft  
DECK: 296 sq. ft, PORCH: 132 sq. ft  
PATIO: 229 sq. ft, BALCONY: 22 sq. ft  
TOTAL: 4685 sq. ft  
SIZES AND DIMENSIONS ARE APPROXIMATE, ACTUAL MAY VARY.



Disclaimer: Sizes and Dimensions are Approximate, Actual May Vary.



**Pandora & John Erlandson**

303-888-6298

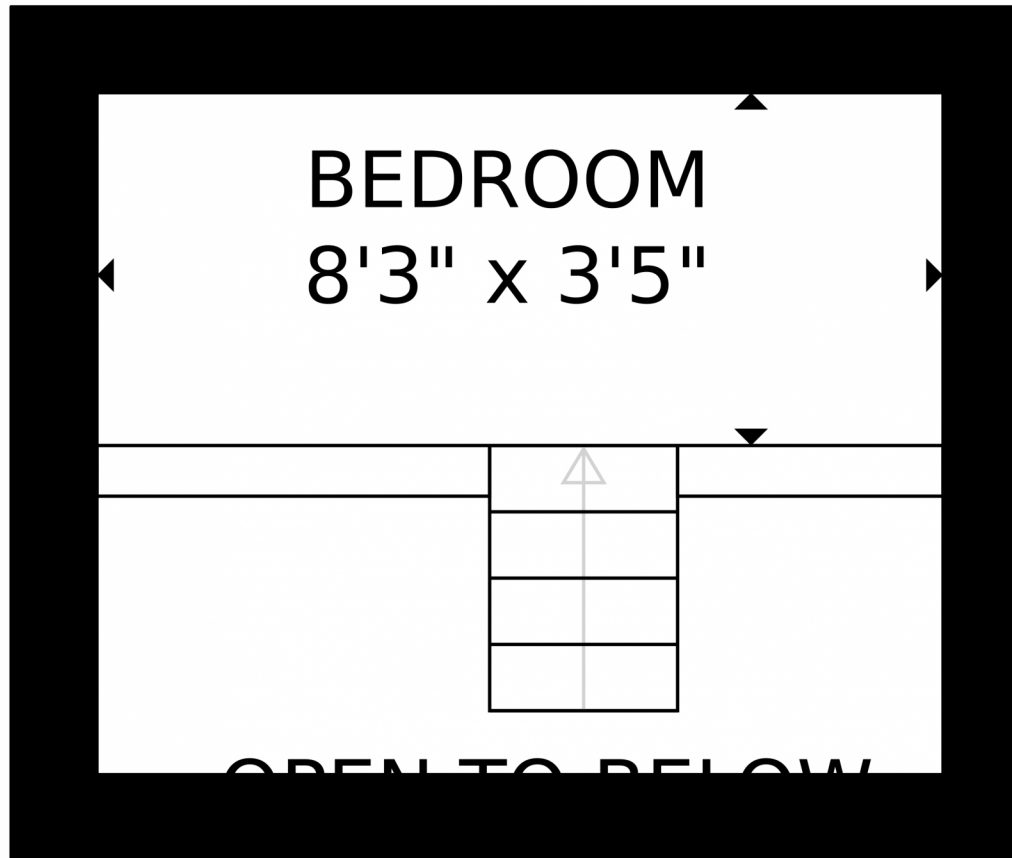
[pandora@pandorajohnproperties.com](mailto:pandora@pandorajohnproperties.com)

<https://www.pandorajohnproperties.com>



Scan code  
for more  
property  
details





GROSS INTERNAL AREA  
FLOOR 1: 1141 sq. ft, FLOOR 2: 1325 sq. ft  
FLOOR 3: 323 sq. ft, FLOOR 4: 604 sq. ft  
FLOOR 5: 1255 sq. ft, FLOOR 6: 36 sq. ft  
EXCLUDED AREAS: , GARAGE: 405 sq. ft  
DECK: 296 sq. ft, PORCH: 132 sq. ft  
PATIO: 229 sq. ft, BALCONY: 22 sq. ft  
TOTAL: 4685 sq. ft  
SIZES AND DIMENSIONS ARE APPROXIMATE, ACTUAL MAY VARY.



Disclaimer: Sizes and Dimensions are Approximate, Actual May Vary.



**Pandora & John Erlandson**

303-888-6298

[pandora@pandorajohnproperties.com](mailto:pandora@pandorajohnproperties.com)

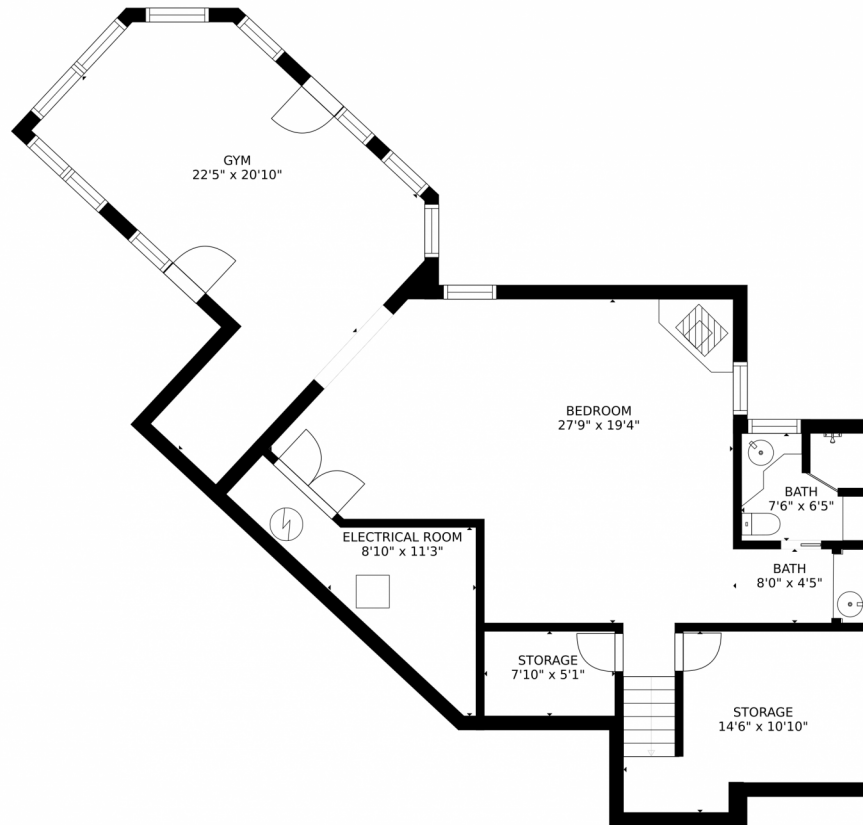
<https://www.pandorajohnproperties.com>



Scan code  
for more  
property  
details



# 6331 Bluebell Lane, Evergreen, CO 80439 – Lower Level



GROSS INTERNAL AREA  
FLOOR 1: 1141 sq. ft, FLOOR 2: 1325 sq. ft  
FLOOR 3: 323 sq. ft, FLOOR 4: 604 sq. ft  
FLOOR 5: 1255 sq. ft, FLOOR 6: 36 sq. ft  
EXCLUDED AREAS: , GARAGE: 405 sq. ft  
DECK: 296 sq. ft, PORCH: 132 sq. ft  
PATIO: 229 sq. ft, BALCONY: 22 sq. ft  
TOTAL: 4685 sq. ft  
SIZES AND DIMENSIONS ARE APPROXIMATE, ACTUAL MAY VARY.



Disclaimer: Sizes and Dimensions are Approximate, Actual May Vary.



**Pandora & John Erlandson**

303-888-6298

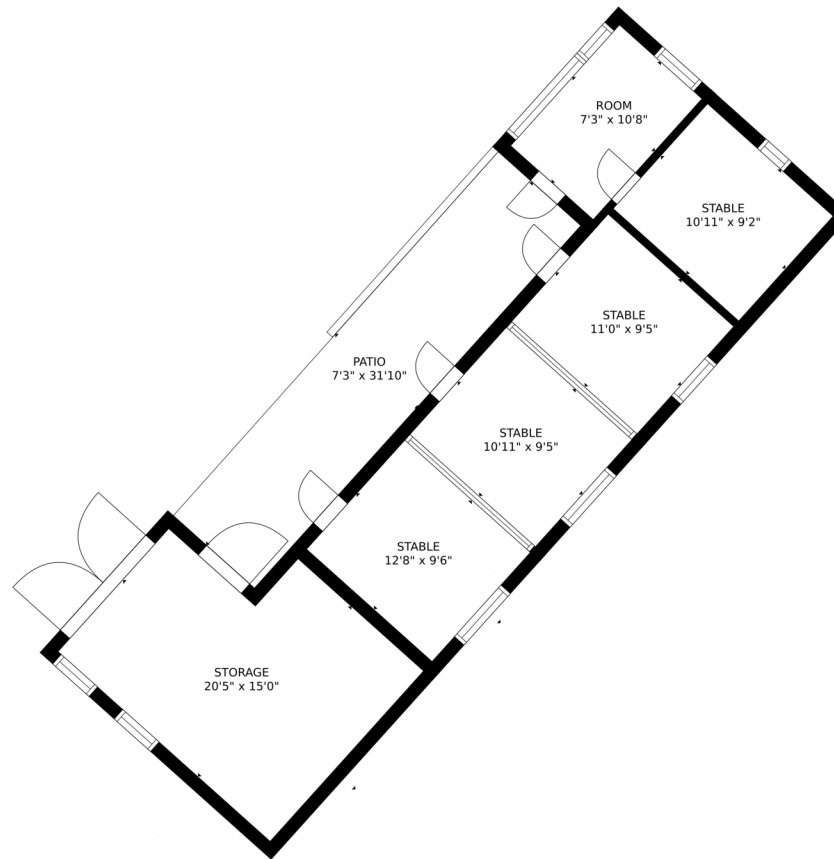
[pandora@pandorajohnproperties.com](mailto:pandora@pandorajohnproperties.com)

<https://www.pandorajohnproperties.com>



Scan code  
for more  
property  
details





GROSS INTERNAL AREA  
FLOOR 1: 1141 sq. ft, FLOOR 2: 1325 sq. ft  
FLOOR 3: 323 sq. ft, FLOOR 4: 604 sq. ft  
FLOOR 5: 1255 sq. ft, FLOOR 6: 36 sq. ft  
EXCLUDED AREAS: , GARAGE: 405 sq. ft  
DECK: 296 sq. ft, PORCH: 132 sq. ft  
PATIO: 229 sq. ft, BALCONY: 22 sq. ft  
TOTAL: 4685 sq. ft  
SIZES AND DIMENSIONS ARE APPROXIMATE, ACTUAL MAY VARY.

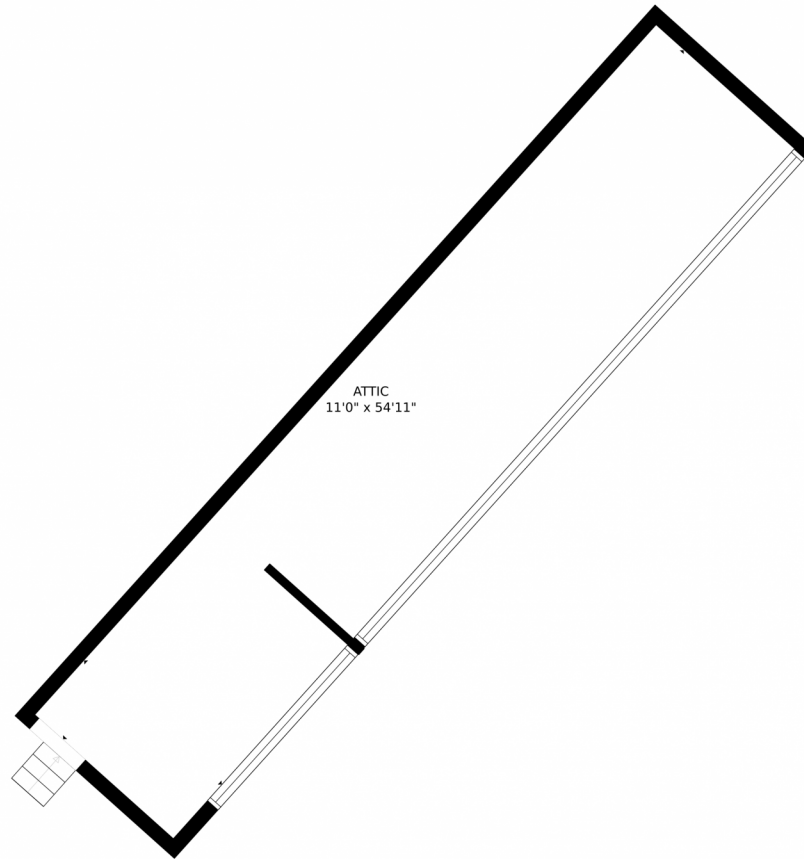


Disclaimer: Sizes and Dimensions are Approximate, Actual May Vary.



**Pandora & John Erlandson**  
303-888-6298  
pandora@pandorajohnproperties.com  
<https://www.pandorajohnproperties.com>





GROSS INTERNAL AREA  
FLOOR 1: 1141 sq. ft, FLOOR 2: 1325 sq. ft  
FLOOR 3: 323 sq. ft, FLOOR 4: 604 sq. ft  
FLOOR 5: 1255 sq. ft, FLOOR 6: 36 sq. ft  
EXCLUDED AREAS: , GARAGE: 405 sq. ft  
DECK: 296 sq. ft, PORCH: 132 sq. ft  
PATIO: 229 sq. ft, BALCONY: 22 sq. ft  
TOTAL: 4685 sq. ft  
SIZES AND DIMENSIONS ARE APPROXIMATE, ACTUAL MAY VARY.



Disclaimer: Sizes and Dimensions are Approximate, Actual May Vary.



**Pandora & John Erlandson**

303-888-6298

[pandora@pandorajohnproperties.com](mailto:pandora@pandorajohnproperties.com)

<https://www.pandorajohnproperties.com>

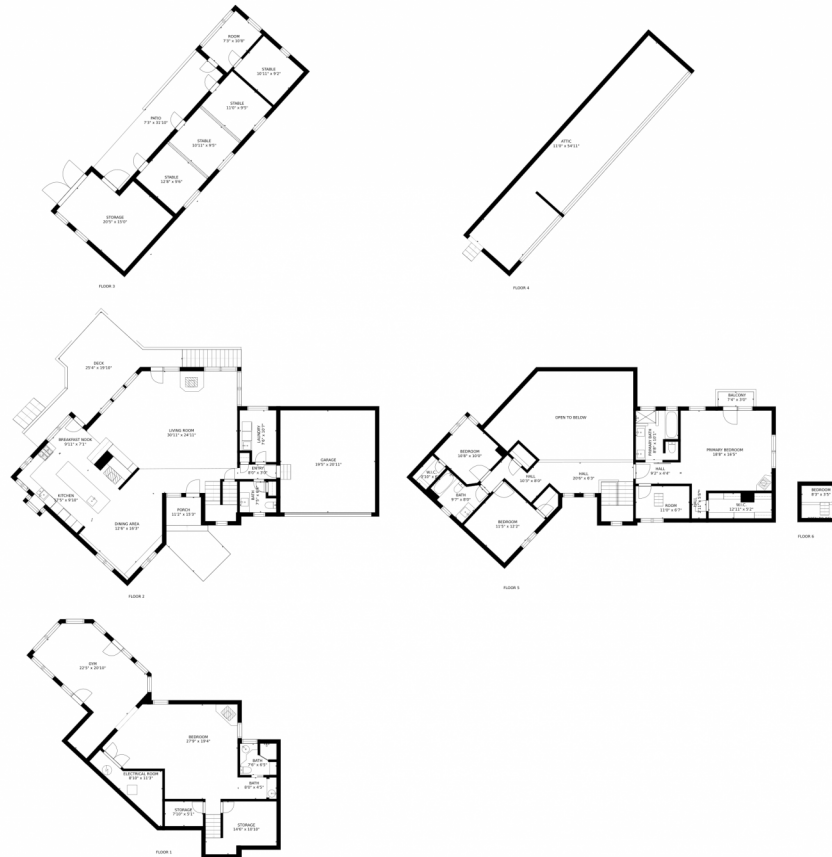


Scan code  
for more  
property  
details





# 6331 Bluebell Lane, Evergreen, CO 80439 – All Levels



GROSS INTERNAL AREA  
FLOOR 1: 1141 sq. ft, FLOOR 2: 1325 sq. ft  
FLOOR 3: 323 sq. ft, FLOOR 4: 604 sq. ft  
FLOOR 5: 1255 sq. ft, FLOOR 6: 36 sq. ft  
EXCLUDED AREAS: , GARAGE: 405 sq. ft  
DECK: 296 sq. ft, PORCH: 132 sq. ft  
PATIO: 229 sq. ft, BALCONY: 22 sq. ft  
TOTAL: 4685 sq. ft  
SIZES AND DIMENSIONS ARE APPROXIMATE, ACTUAL MAY VARY.



Disclaimer: Sizes and Dimensions are Approximate, Actual May Vary.



**Pandora & John Erlandson**

303-888-6298

[pandora@pandorajohnproperties.com](mailto:pandora@pandorajohnproperties.com)

<https://www.pandorajohnproperties.com>



Scan code  
for more  
property  
details

