



 Single Family
  2042 SQFT
  3 Beds
  2 Baths
  5 Acre

## PROPERTY DETAILS

Welcome to this lovely custom home with plenty of land and mountain views. This delightful sunny home sits on beautiful acreage with aspens & rock outcroppings. You will love the one acre fenced yard with fire pit, four outdoor living spaces, extra paved parking for your RV and toys, & the idyllic & private setting. This light & bright home with vaulted ceilings offers ideal living with an open floor plan & main level primary suite. The spacious great room has plentiful windows, hardwood flooring, gas fireplace & wood burning stove. It's open to the kitchen with new stainless appliances, pantry, & breakfast bar where everyone will gather. Walk out to the sunny expansive deck with aspens rustling in the breeze, & enjoy mountain views & glorious sunsets. The main floor primary suite also has a gas fireplace for cozy evenings, & a door to the deck. The jetted tub with picture window makes relaxing easy. Downstairs find two more bedrooms, bath & den with a walk-out to the east facing patio. This is the place for your morning coffee! The patio is part of the one acre newly fenced yard. Your pets will love it, and you will relish the fire pit for evenings watching the stars. On a hot summer day you might rest in the shade on the lovely covered front deck. Parking is plentiful, with an extra paved driveway just for your RV and boat, a gravel circular driveway and a flat paved area in front of the oversized garage for working or playing. All this is just ½ mile to Hwy 285 for quick access to hiking and biking at Staunton State Park (6 min), gold medal trout fishing on the Platte River (20 min) and many more



**Pandora & John Erlandson**  
 303-888-6298  
[pandora@pandorajohnproperties.com](mailto:pandora@pandorajohnproperties.com)  
<https://www.pandorajohnproperties.com>



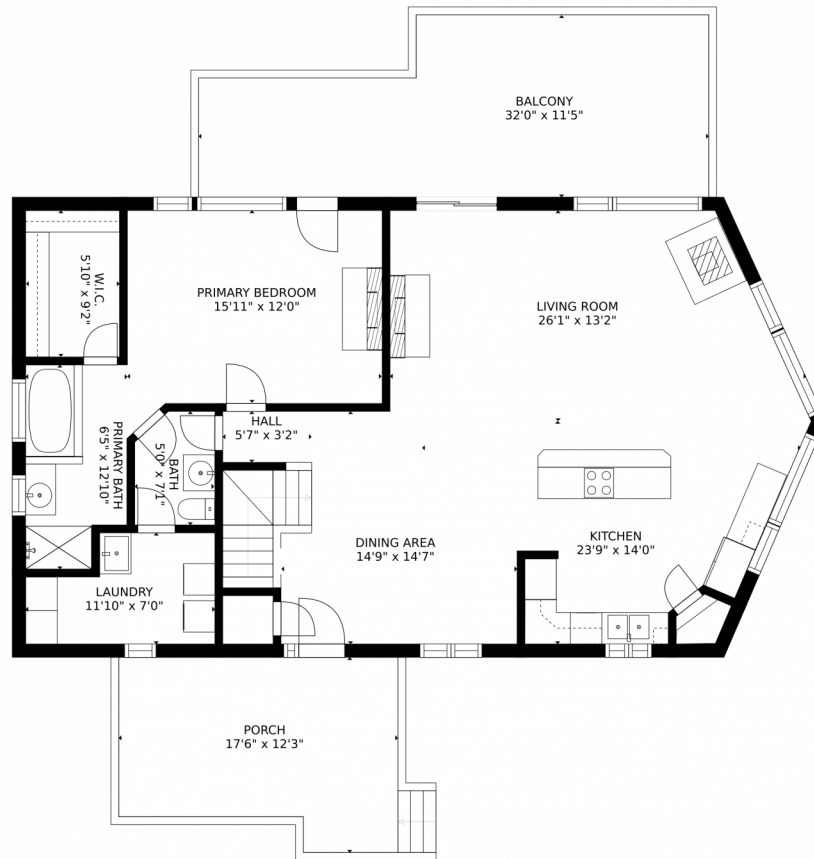
recreational opportunities. You have convenience too as you are just 6 minutes to Conifer shopping & amenities, & 21 minutes to metro Denver. Come home to serene living on your beautiful 5 acre oasis, with easy access to everything!



**Pandora & John Erlandson**  
303-888-6298  
[pandora@pandorajohnproperties.com](mailto:pandora@pandorajohnproperties.com)  
<https://www.pandorajohnproperties.com>



# 12510 Elk Haven Lane, Conifer, CO 80433 – Main Level



GROSS INTERNAL AREA  
FLOOR 1: 690 sq. ft., FLOOR 2: 1255 sq. ft.  
EXCLUDED AREAS: , GARAGE: 435 sq. ft.  
PATIO: 864 sq. ft., BALCONY: 311 sq. ft.  
PORCH: 188 sq. ft.  
TOTAL: 1945 sq. ft.  
SIZES AND DIMENSIONS ARE APPROXIMATE, ACTUAL MAY VARY.



Disclaimer: Sizes and Dimensions are Approximate, Actual May Vary.



**Pandora & John Erlandson**

303-888-6298

[pandora@pandorajohnproperties.com](mailto:pandora@pandorajohnproperties.com)

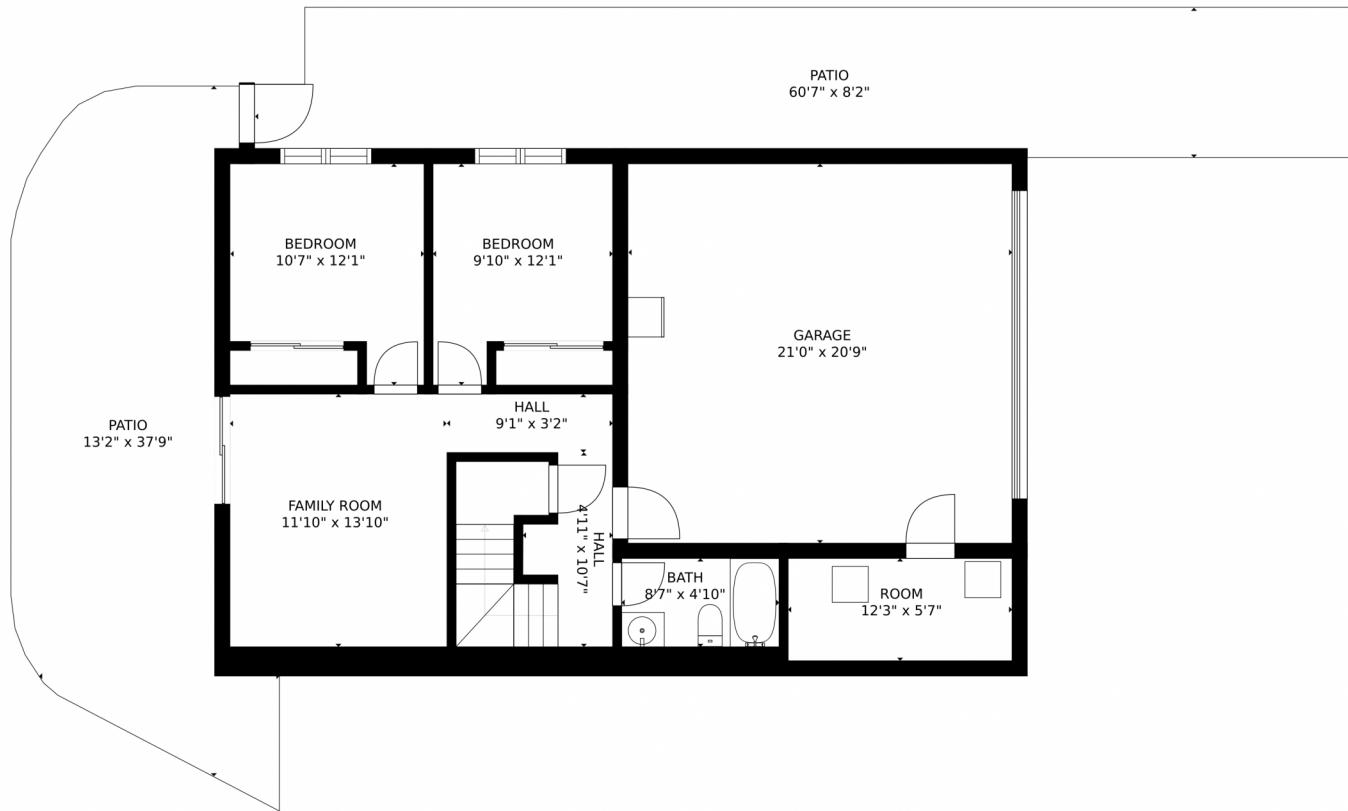
<https://www.pandorajohnproperties.com>



Scan code  
for more  
property  
details



# 12510 Elk Haven Lane, Conifer, CO 80433 – Lower Level



GROSS INTERNAL AREA  
FLOOR 1: 690 sq. ft, FLOOR 2: 1255 sq. ft  
EXCLUDED AREAS: , GARAGE: 435 sq. ft  
PATIO: 864 sq. ft, BALCONY: 311 sq. ft  
PORCH: 188 sq. ft  
TOTAL: 1945 sq. ft  
SIZES AND DIMENSIONS ARE APPROXIMATE, ACTUAL MAY VARY.



Disclaimer: Sizes and Dimensions are Approximate, Actual May Vary.



**Pandora & John Erlandson**

303-888-6298

[pandora@pandorajohnproperties.com](mailto:pandora@pandorajohnproperties.com)

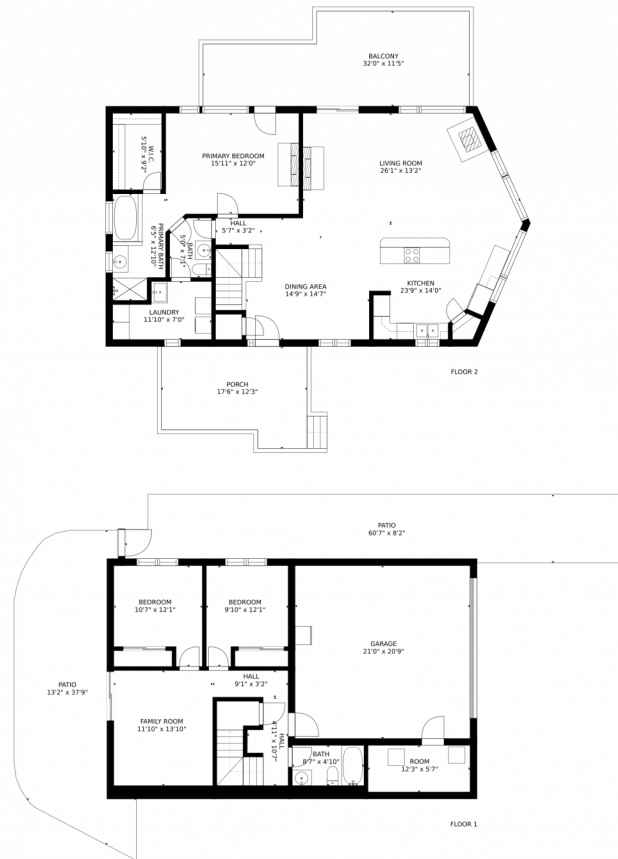
<https://www.pandorajohnproperties.com>



Scan code  
for more  
property  
details



# 12510 Elk Haven Lane, Conifer, CO 80433 – All Levels



GROSS INTERNAL AREA  
FLOOR 1: 690 sq. ft, FLOOR 2: 1255 sq. ft  
EXCLUDED AREAS: , GARAGE: 435 sq. ft  
PATIO: 864 sq. ft, BALCONY: 311 sq. ft  
PORCH: 188 sq. ft  
TOTAL: 1945 sq. ft  
SIZES AND DIMENSIONS ARE APPROXIMATE, ACTUAL MAY VARY.



Disclaimer: Sizes and Dimensions are Approximate, Actual May Vary.



**Pandora & John Erlandson**

303-888-6298

[pandora@pandorajohnproperties.com](mailto:pandora@pandorajohnproperties.com)

<https://www.pandorajohnproperties.com>



Scan code  
for more  
property  
details

