



22610 E Fremont Place
Aurora, CO 80016
COMMUNITY: Saddle Rock Golf Club

MLS # 7279405
PRICE \$830,000



Single Family



4820 SQFT



4 Beds



5 Baths



3 Car



0.24 Acre

PROPERTY DETAILS

For more photos and a virtual tour, please visit: <https://v1tours.com/listing/42661?no-brand>! Welcome home to Saddle Rock Golf Club of Southeast Aurora! So many honey do's have already been honey-done making this Saddle Rock beauty move in ready to the max: new carpet, new paint, new hardwoods on the main level, new tile in the wet bar, many new lighting fixtures throughout the home! The main level boasts an open concept design offering a formal living and dining space immediately upon entering with the sprawling chef's kitchen and eat-in breakfast nook leading you into the spacious secondary family room making this layout ideal for entertaining. Next venture upstairs where you are greeted by a sunny loft space offering endless versatility for use further leading to the owner's suite quietly nestled at one end of the upper level with two spacious additional bedrooms at the other end. But wait, there's more... this home is completed by a fully finished basement presenting with a fourth generously sized bedroom, a fifth bathroom, an additional living space and a robust and authentic home theater room featuring theater style carpeting and curtains. You will love living in Saddle Rock Golf Club as the entire community is surrounded by the golf course offering miles upon miles of enjoyable trail space for you to opt outside and live your best Colorado lifestyle every single day or make a splash meeting your new neighbors at the community pool or tennis courts.



Tatyana Sturm

720-350-5909

tatyana@exitrealtydtc.com

<https://thestorckteam.com>

Scan code
for more
property
details



Residents of Saddle Rock Golf Club benefit from the award winning education system of Cherry Creek Schools including Grandview High School along with Falcon Creek MS and Creekside Elementary being just a few minute's drive away. Enjoy endless dining, shopping, and entertainment options in the Southlands Outdoor Retail District featuring a full AMC Dine-In Movie Theater, abundant casual dining options along with higher end restaurant options as well, and so many shopping choices.

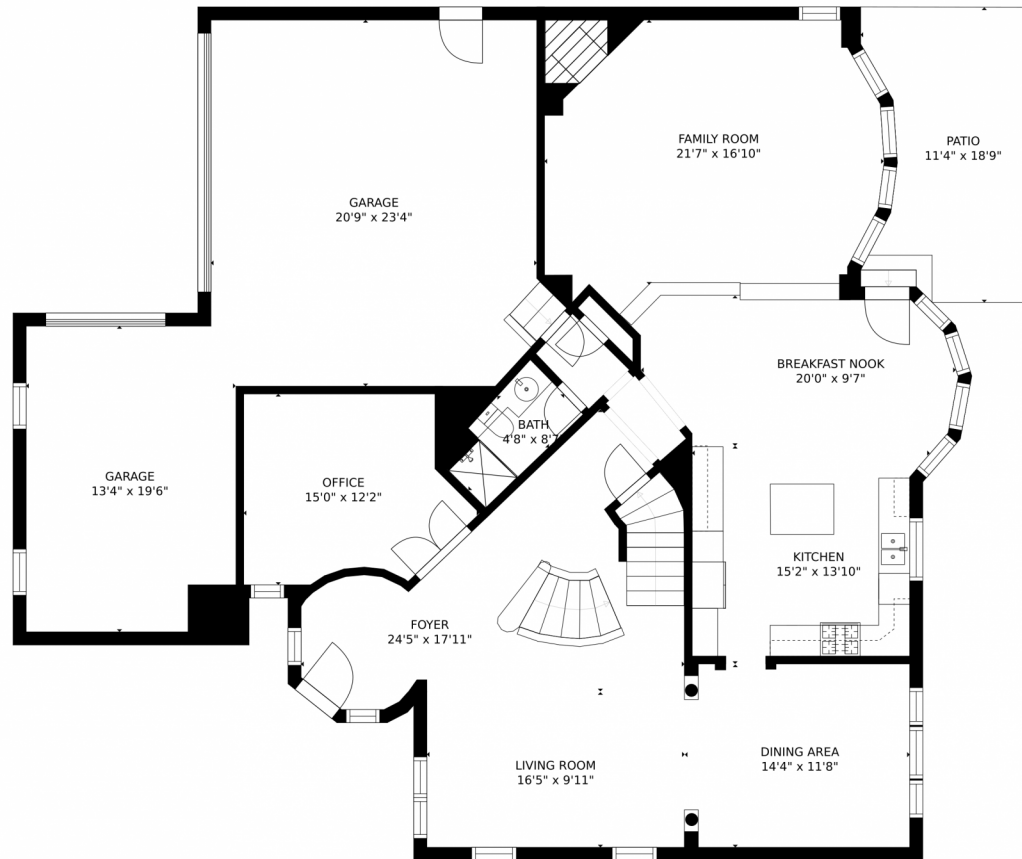


Tatyana Sturm
720-350-5909
tatyana@exitrealtydtc.com
<https://thestorckteam.com>



Scan code
for more
property
details

22610 E Fremont Place, Aurora, CO 80016 – 1st Floor



GROSS INTERNAL AREA
FLOOR 1: 1400 sq. ft. FLOOR 2: 1617 sq. ft.
FLOOR 3: 1666 sq. ft. EXCLUDED AREAS:
GARAGE: 737 sq. ft. PATIO: 187 sq. ft.
TOTAL: 4683 sq. ft.
MEASUREMENTS CALCULATED BY V1Photos.com ARE DEEMED HIGHLY RELIABLE BUT NOT GUARANTEED.



Disclaimer: Sizes and Dimensions are Approximate, Actual May Vary.



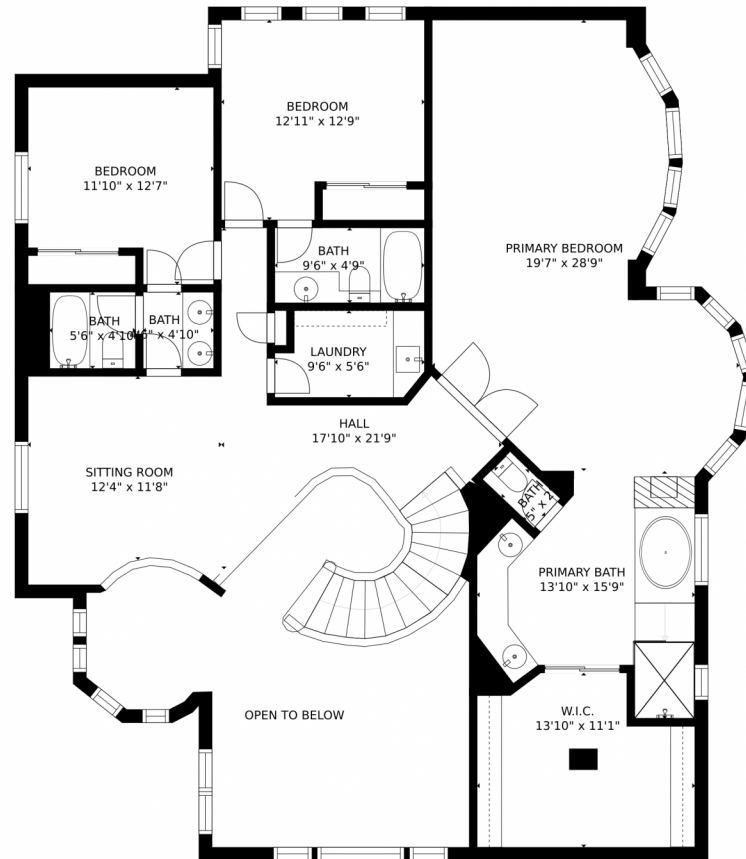
Tatyana Sturm
720-350-5909
tatyana@exitrealtydtc.com
<https://thestorckteam.com>



Scan code
for more
property
details



22610 E Fremont Place, Aurora, CO 80016 – 2nd Floor



GROSS INTERNAL AREA
FLOOR 1: 1400 sq. ft, FLOOR 2: 1617 sq. ft
FLOOR 3: 1666 sq. ft, EXCLUDED AREAS:
GARAGE: 737 sq. ft, PATIO: 187 sq. ft
TOTAL: 4683 sq. ft
MEASUREMENTS CALCULATED BY V1Photos.COM ARE DEEMED HIGHLY RELIABLE BUT NOT GUARANTEED.

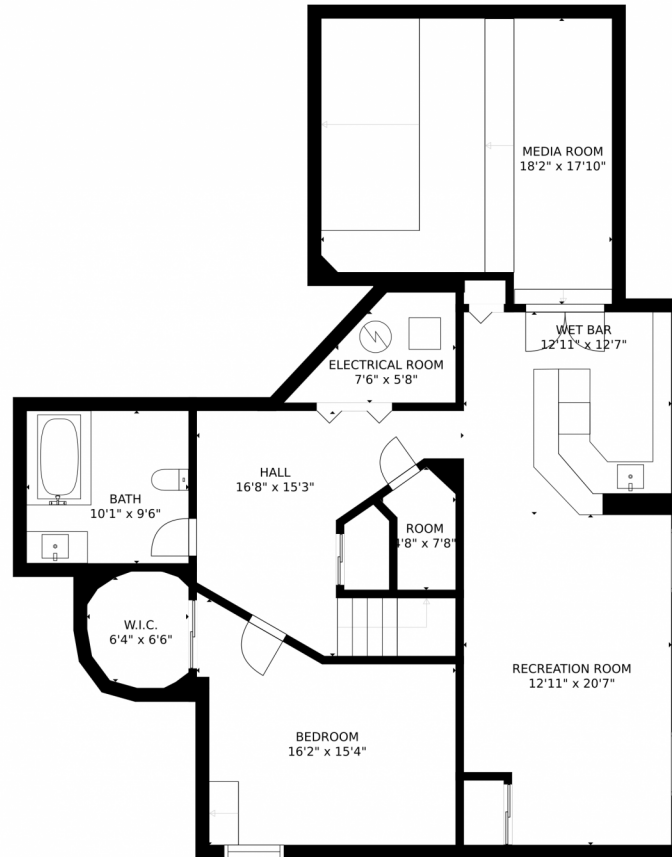


Disclaimer: Sizes and Dimensions are Approximate, Actual May Vary.



Tatyana Sturm
720-350-5909
tatyana@exitrealtydtc.com
<https://thestorckteam.com>





GROSS INTERNAL AREA
FLOOR 1: 1400 sq. ft. FLOOR 2: 1617 sq. ft.
FLOOR 3: 1666 sq. ft. EXCLUDED AREAS:
GARAGE: 737 sq. ft. PATIO: 187 sq. ft.
TOTAL: 4683 sq. ft.
MEASUREMENTS CALCULATED BY V1Photos.com ARE DEEMED HIGHLY RELIABLE BUT NOT GUARANTEED.



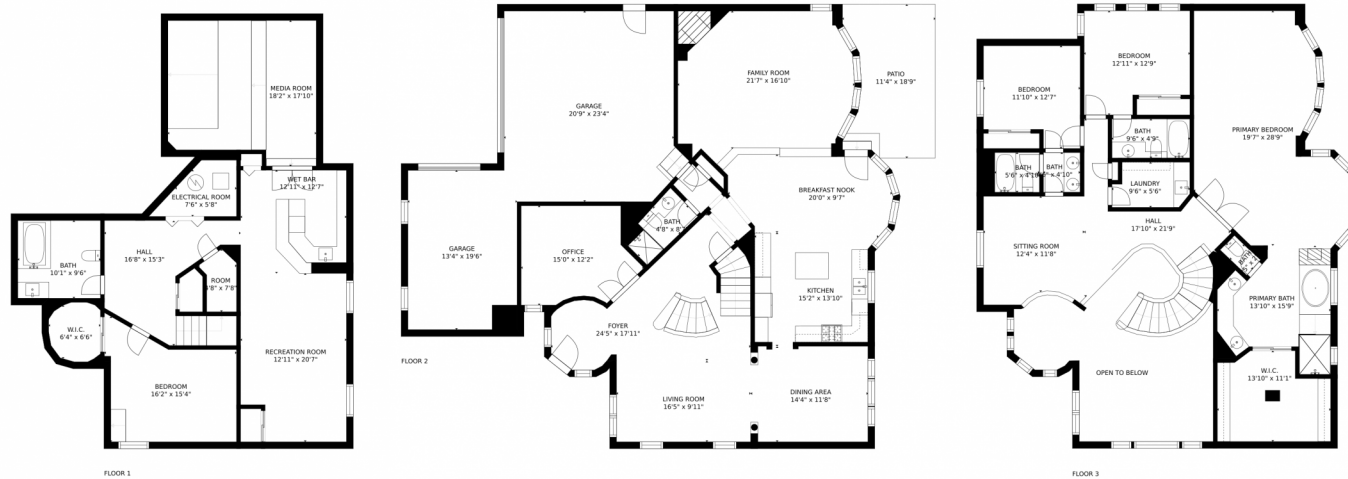
Disclaimer: Sizes and Dimensions are Approximate, Actual May Vary.



Tatyana Sturm
720-350-5909
tatyana@exitrealtydtc.com
<https://thestorckteam.com>



22610 E Fremont Place, Aurora, CO 80016 – All Floors



GROSS INTERNAL AREA
FLOOR 1: 1400 sq. ft, FLOOR 2: 1617 sq. ft
FLOOR 3: 1666 sq. ft, EXCLUDED AREAS:
GARAGE: 737 sq. ft, PATIO: 187 sq. ft
TOTAL: 4683 sq. ft
MEASUREMENTS CALCULATED BY V1Photos.COM ARE DEEMED HIGHLY RELIABLE BUT NOT GUARANTEED.



Disclaimer: Sizes and Dimensions are Approximate, Actual May Vary.



Tatyana Sturm
720-350-5909
tatyana@exitrealtydtc.com
<https://thestorckteam.com>



Scan code
for more
property
details

