

SHAW HEIGHTS CHARMER



Single Family



1716 SQFT



3 Beds



2 Baths



1 Car



0.15 Acre

PROPERTY DETAILS

Cute as a button! This Shaw Heights brick ranch will delight you with its updated kitchen and baths, wood floors, finished basement, and large private yard. Add in the attached 1-car garage and you've got everything you need. From the light, bright living room, spacious kitchen, two bedrooms and a full bathroom on the main level, to the massive family room in the basement, along with a conforming bedroom and 3/4 bath, there's room for everyone. Large laundry area with laundry tub and storage area complete the basement. Super convenient to I-25 and US36, Westminster City Center, Hyland Hills Golf Course, mini golf, parks, schools, not to mention shopping, entertainment, and dining. Move in and start living your best life!



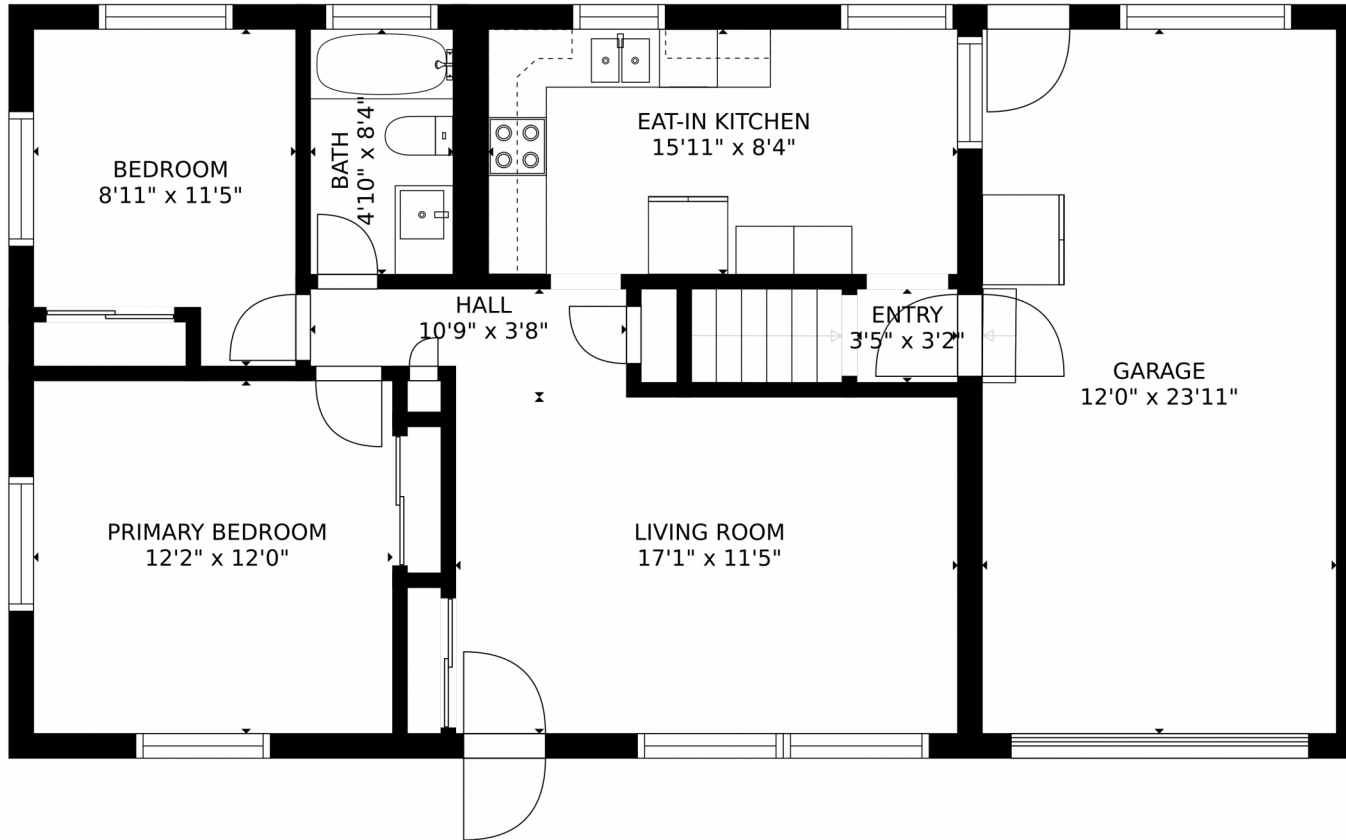
Karen Rose Nelson
720-273-3721
karen@elevatedrealestate.com



Scan code
for more
property
details



8531 Concord Lane, Westminster, CO 80031 – 1st Floor



GROSS INTERNAL AREA
FLOOR 1: 751 sq. ft, FLOOR 2: 751 sq. ft
EXCLUDED AREAS: , GARAGE: 288 sq. ft
TOTAL: 1502 sq. ft
SIZES AND DIMENSIONS ARE APPROXIMATE, ACTUAL MAY VARY.



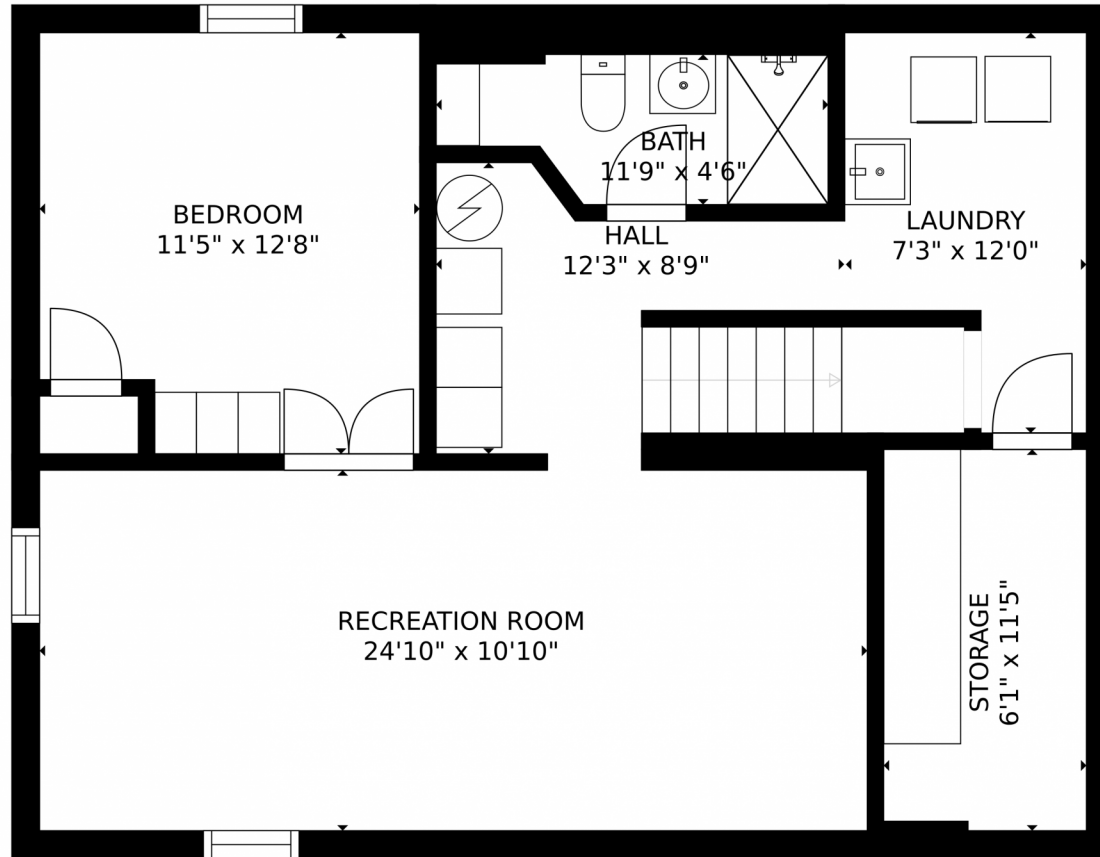
Disclaimer: Sizes and Dimensions are Approximate, Actual May Vary.



Karen Rose Nelson
720-273-3721
karen@elevatedrealestate.com



8531 Concord Lane, Westminster, CO 80031 – Basement



GROSS INTERNAL AREA
FLOOR 1: 751 sq. ft, FLOOR 2: 751 sq. ft
EXCLUDED AREAS: , GARAGE: 288 sq. ft
TOTAL: 1502 sq. ft
SIZES AND DIMENSIONS ARE APPROXIMATE, ACTUAL MAY VARY.



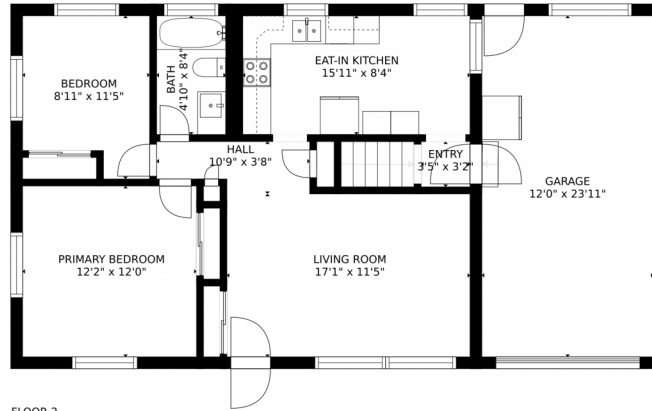
Disclaimer: Sizes and Dimensions are Approximate, Actual May Vary.



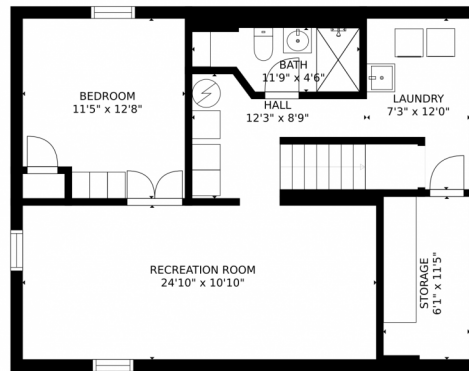
Karen Rose Nelson
720-273-3721
karen@elevatedrealestate.com



8531 Concord Lane, Westminster, CO 80031 – All Floors



FLOOR 2



FLOOR 1

GROSS INTERNAL AREA
FLOOR 1: 751 sq. ft. FLOOR 2: 751 sq. ft.
EXCLUDED AREAS: , GARAGE: 288 sq. ft.
TOTAL: 1502 sq. ft.
SIZES AND DIMENSIONS ARE APPROXIMATE, ACTUAL MAY VARY.



Disclaimer: Sizes and Dimensions are Approximate, Actual May Vary.



Karen Rose Nelson
720-273-3721
karen@elevatedrealestate.com

