



3978 S Washington Street
 Englewood, CO 80113
 COMMUNITY: Central Englewood Se

MLS # 5325379
 PRICE \$575,000



Single Family



2075 SQFT



5 Beds



1/1 Baths



2 Car



0.14 Acre

PROPERTY DETAILS

Floor schematic coming soon.

Don't miss your opportunity to be a part of this vibrant Englewood neighborhood. Conveniently located to major roads, public transportation, shopping and restaurants, this charming home has been impeccably maintained and is move-in ready. On the other hand, this home would be a perfect opportunity to customize to your personal preferences without the need to replaced many of the major house systems. The furnace, electrical hot water heater (takes advantage of the solar panel system) and the main electrical panel were replaced in early 2022. The roof, gutters and solar array were installed in 2019. A new backyard concrete patio and sidewalk were poured in 2017. The windows, insulation, evaporative cooler and lawn sprinkler system were all replaced 2005, along with a kitchen and main floor bathroom update.

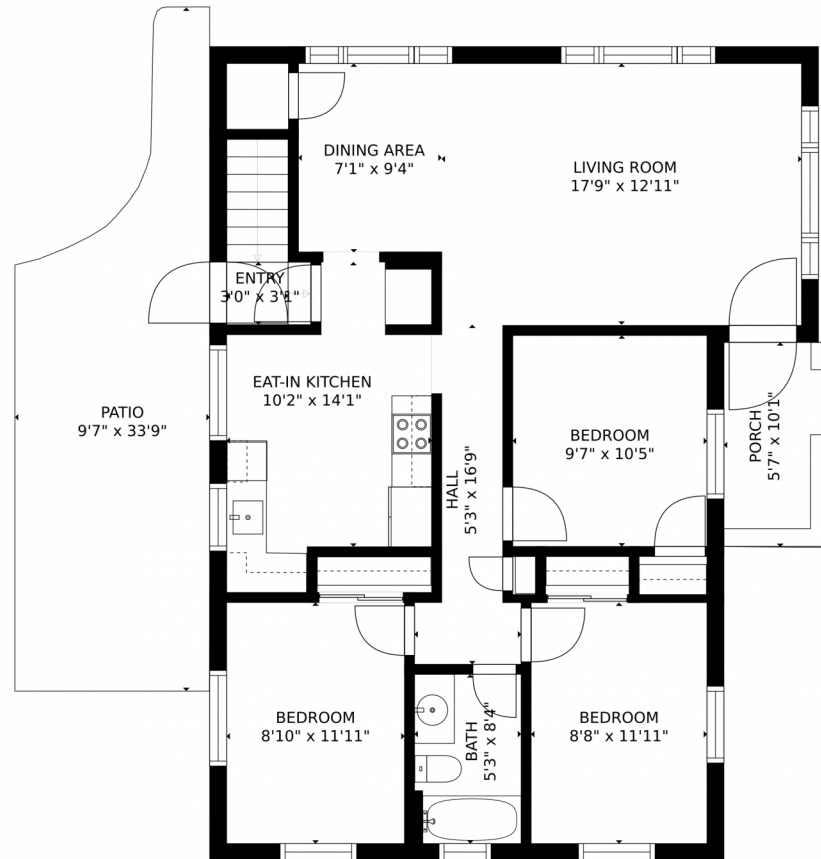


Douglas Clark
 303-517-7155
 dclark@dcirec.com



Scan code
 for more
 property
 details





GROSS INTERNAL AREA
FLOOR 1: 971 sq. ft, FLOOR 2: 0 sq. ft
FLOOR 3: 976 sq. ft, EXCLUDED AREAS:
GARAGE: 439 sq. ft, PATIO: 250 sq. ft
PORCH: 56 sq. ft
TOTAL: 1947 sq. ft
SIZES AND DIMENSIONS ARE APPROXIMATE, ACTUAL MAY VARY.

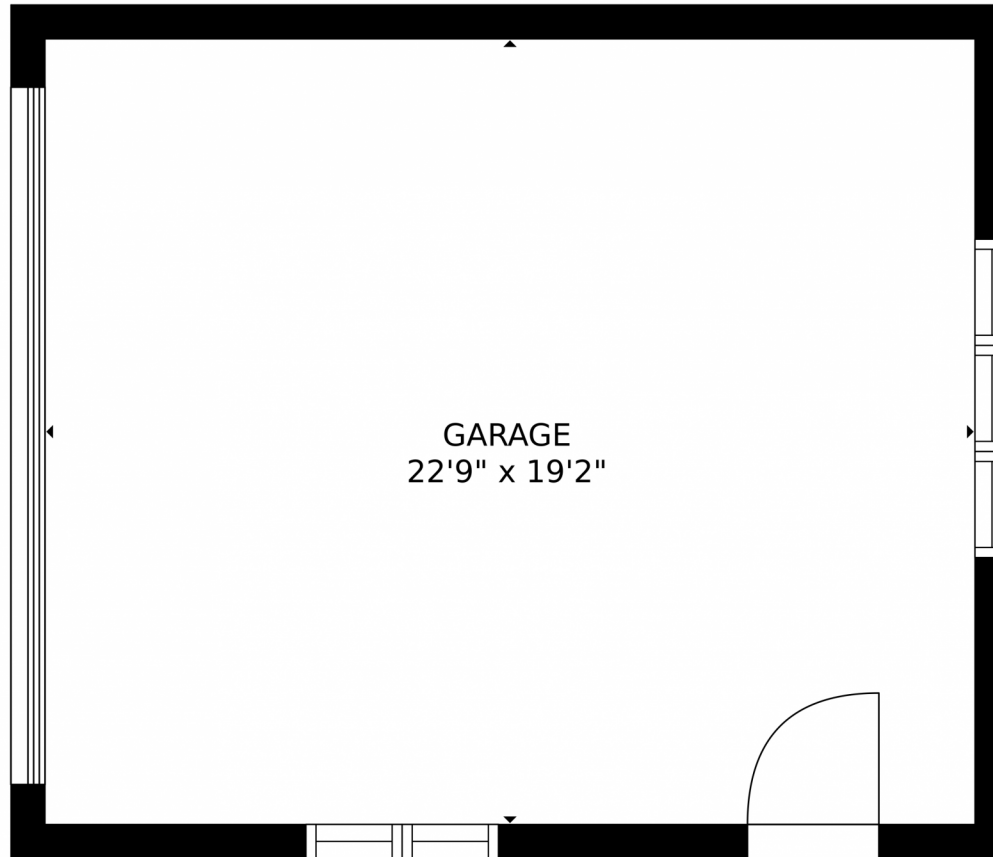


Disclaimer: Sizes and Dimensions are Approximate, Actual May Vary.



Douglas Clark
303-517-7155
dclark@dcirec.com





GROSS INTERNAL AREA
FLOOR 1: 971 sq. ft, FLOOR 2: 0 sq. ft
FLOOR 3: 976 sq. ft, EXCLUDED AREAS:
GARAGE: 439 sq. ft, PATIO: 250 sq. ft
PORCH: 56 sq. ft
TOTAL: 1947 sq. ft
SIZES AND DIMENSIONS ARE APPROXIMATE, ACTUAL MAY VARY.



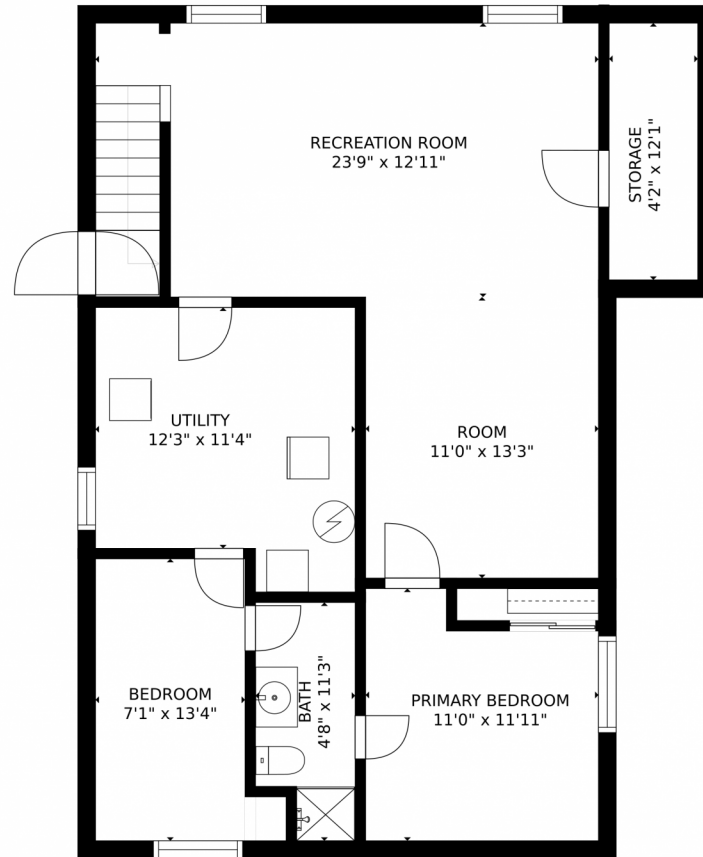
Disclaimer: Sizes and Dimensions are Approximate, Actual May Vary.



Douglas Clark
303-517-7155
dclark@dcirec.com



3978 S Washington Street, Englewood, CO 80113 – Basement



GROSS INTERNAL AREA
FLOOR 1: 971 sq. ft, FLOOR 2: 0 sq. ft
FLOOR 3: 976 sq. ft, EXCLUDED AREAS:
GARAGE: 439 sq. ft, PATIO: 250 sq. ft
PORCH: 56 sq. ft
TOTAL: 1947 sq. ft
SIZES AND DIMENSIONS ARE APPROXIMATE, ACTUAL MAY VARY.



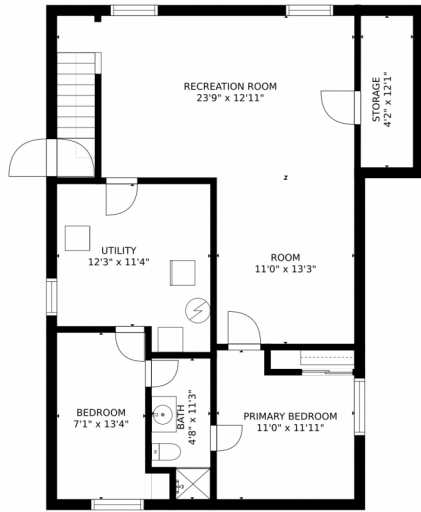
Disclaimer: Sizes and Dimensions are Approximate, Actual May Vary.



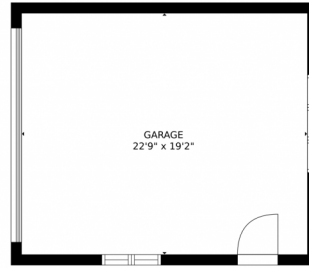
Douglas Clark
303-517-7155
dclark@dcirec.com



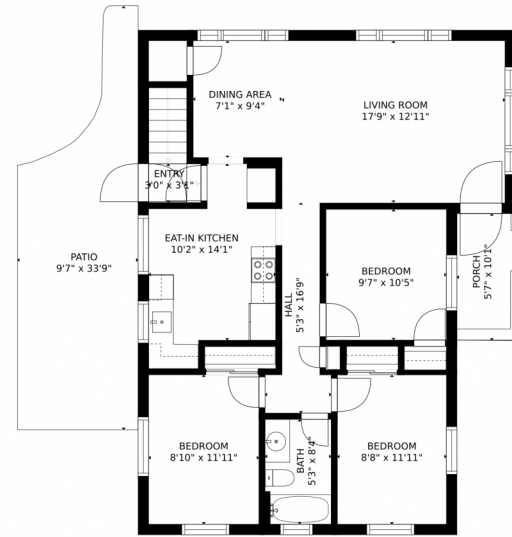
3978 S Washington Street, Englewood, CO 80113 – All Levels



FLOOR 1



FLOOR 2



FLOOR 3

GROSS INTERNAL AREA
FLOOR 1: 971 sq. ft, FLOOR 2: 0 sq. ft
FLOOR 3: 976 sq. ft, EXCLUDED AREAS:
GARAGE: 439 sq. ft, PATIO: 250 sq. ft
PORCH: 56 sq. ft
TOTAL: 1947 sq. ft
SIZES AND DIMENSIONS ARE APPROXIMATE, ACTUAL MAY VARY.



Disclaimer: Sizes and Dimensions are Approximate, Actual May Vary.



Douglas Clark
303-517-7155
dclark@dcirec.com

