




 Single Family

 3065 SQFT

 0.48 Acre



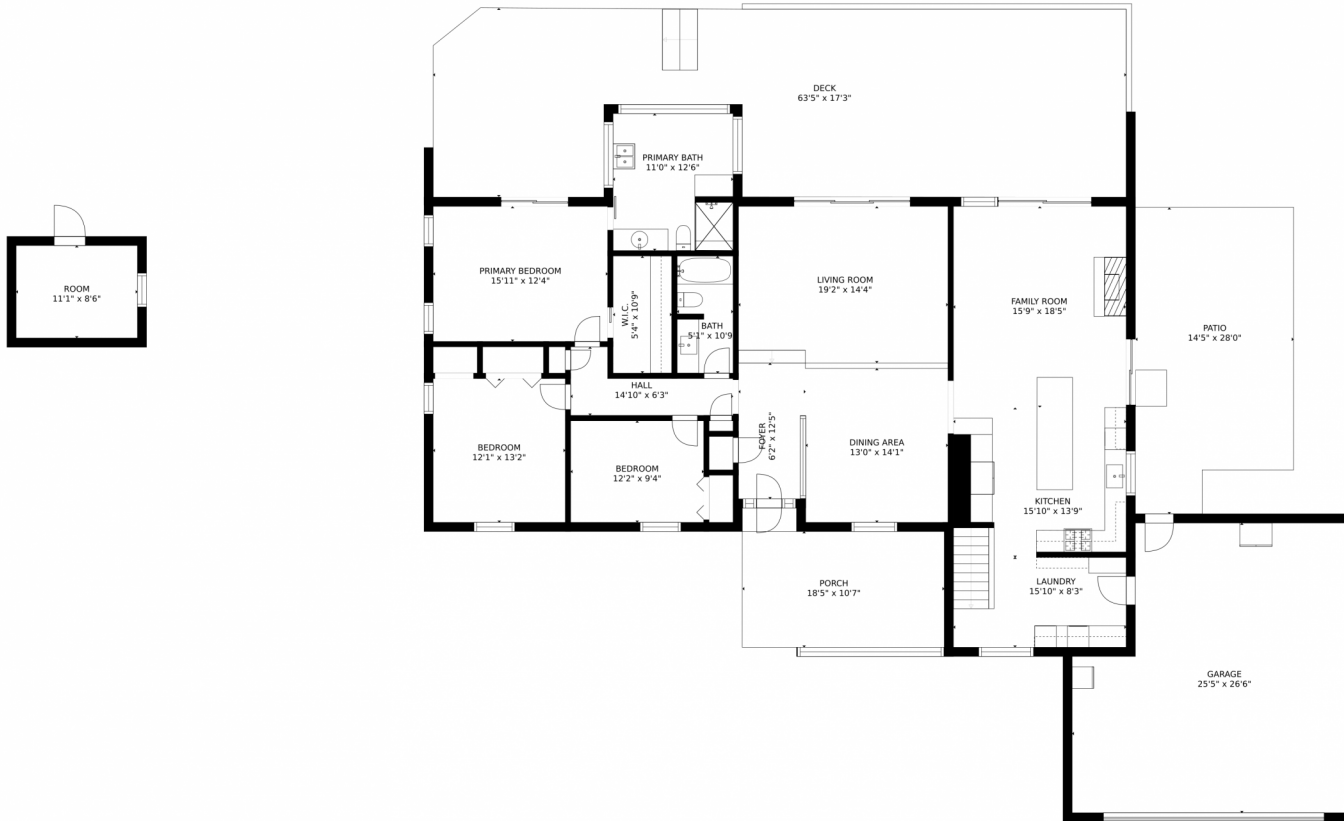
Michelle Blessing
719-649-4200
mblessing@erashields.com



Eddie Hurt
719-339-3765
ehurt@erashields.com
<https://www.ColoradoSpringsRealEstate.com>



3070 Valleybrook Lane, Colorado Springs, CO 80904 — Main Level



GROSS INTERNAL AREA
FLOOR 1: 823 sq. ft., FLOOR 2: 2185 sq. ft.
EXCLUDED AREAS: , GARAGE: 603 sq. ft.
DECK: 977 sq. ft., PATIO: 372 sq. ft.
PORCH: 206 sq. ft.
TOTAL: 3008 sq. ft.
SIZES AND DIMENSIONS ARE APPROXIMATE, ACTUAL MAY VARY.



Disclaimer: Sizes and Dimensions are Approximate, Actual May Vary.



Michelle Blessing
719-649-4200
mblessing@erashields.com



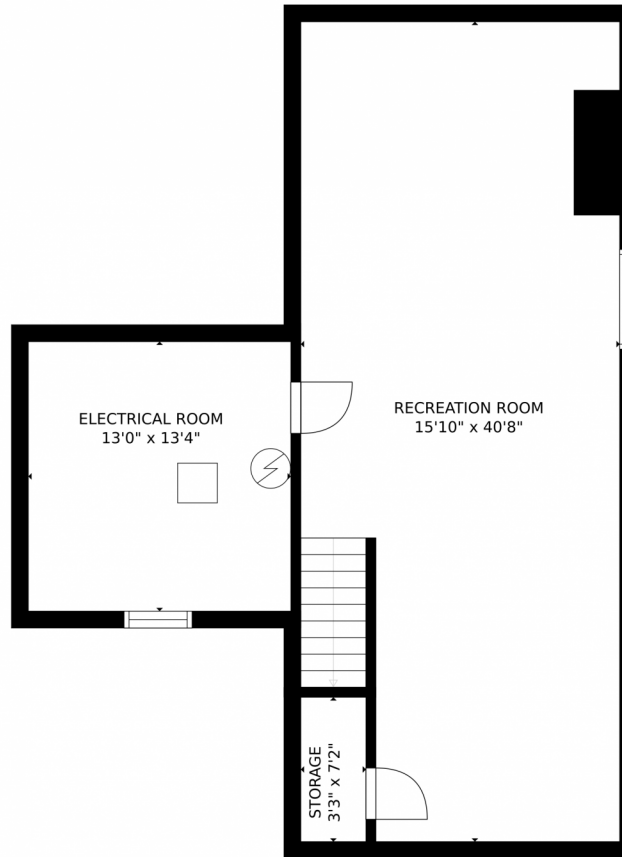
Eddie Hurt
719-339-3765
ehurt@erashields.com
<https://www.ColoradoSpringsRealEstate.com>



Scan code
for more
property
details



3070 Valleybrook Lane, Colorado Springs, CO 80904 — Lower Level



GROSS INTERNAL AREA
FLOOR 1: 823 sq. ft., FLOOR 2: 2185 sq. ft.
EXCLUDED AREAS: , GARAGE: 603 sq. ft.
DECK: 977 sq. ft., PATIO: 372 sq. ft.
PORCH: 206 sq. ft.
TOTAL: 3008 sq. ft.
SIZES AND DIMENSIONS ARE APPROXIMATE, ACTUAL MAY VARY.

Disclaimer: Sizes and Dimensions are Approximate, Actual May Vary.



Michelle Blessing
719-649-4200
mblessing@erashields.com

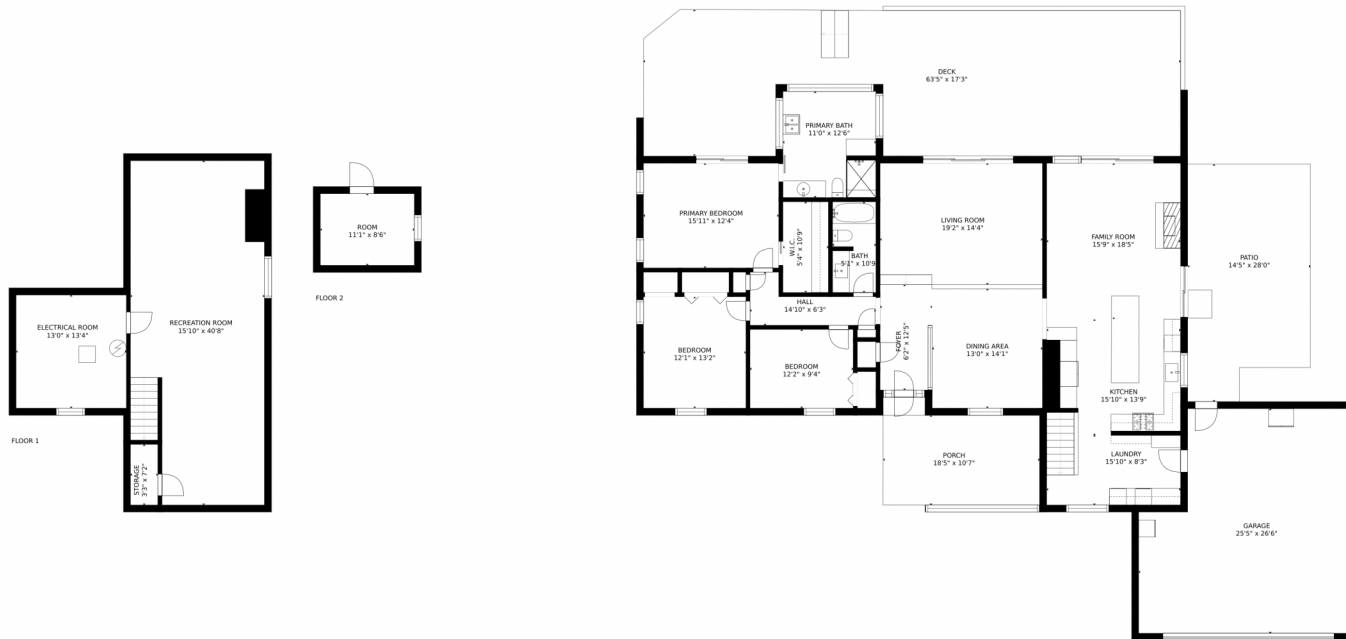


Eddie Hurt
719-339-3765
ehurt@erashields.com
<https://www.ColoradoSpringsRealEstate.com>



Scan code
for more
property
details

3070 Valleybrook Lane, Colorado Springs, CO 80904 – All Levels



GROSS INTERNAL AREA
FLOOR 1: 823 sq. ft., FLOOR 2: 2185 sq. ft.
EXCLUDED AREAS: , GARAGE: 603 sq. ft.
DECK: 977 sq. ft., PATIO: 372 sq. ft.
PORCH: 206 sq. ft.
TOTAL: 3008 sq. ft.
SIZES AND DIMENSIONS ARE APPROXIMATE, ACTUAL MAY VARY.

Disclaimer: Sizes and Dimensions are Approximate, Actual May Vary.



Michelle Blessing
719-649-4200
mblessing@erashields.com



Eddie Hurt
719-339-3765
ehurt@erashields.com
<https://www.ColoradoSpringsRealEstate.com>



Scan code
for more
property
details

