



1820 S Salida Circle  
Aurora, CO 80017  
COMMUNITY: Aurora Highlands

MLS # 8165269  
PRICE \$450,000



Single Family 1296 SQFT 3 Beds 2 Baths 2 Car 0.15 Acre

## PROPERTY DETAILS

Welcome home to Aurora Highlands where residents enjoy no HOA and a phenomenal Southeast Aurora location! Many honey do's have already been honey done making this home move in ready to the max including new interior and exterior paint, all new laminate flooring on the main level, new appliances and countertops in the kitchen along with freshly remastered cabinetry, and a recently remastered bathroom. W-O-W!!! Located just South of Buckley and Mexico, you arrive at Highway 225 in minutes connecting to I-70 and Downtown Denver with ease Northbound or I-25 from Southbound making any commute a breeze. Arrive at Buckley Air Force Base, Community College of Aurora, and the mall for endless entertainment within mere minutes as well. A multitude of city parks and open spaces are found including the Aurora City Center Park where you can enjoy a 4th of July fireworks show and many concerts in the park. Just up the road, you will also find the Aurora Hills Golf Course offering public and club memberships and tee times along with Highline Park ballfields offering children and adults baseball and softball through the City of Aurora. Opt outside and live your best Colorado lifestyle with Cherry Creek Reservoir and State Park literally in the heart of Southeast Aurora and easily accessible from anywhere in the Denver area. The state park is anchored around an 880 surface acre reservoir in the heart of the city offering everything from horseback riding to



**Tatyana Sturm**  
720-350-5909  
tatyana@exitrealttydtc.com  
<https://thestorckteam.com>



boating and fishing and even camping. Miles and miles of biking trails take you throughout the state park with enough endless trails to make an entire day of it, then enjoy a picnic around the reservoir and watch a magnificent sunset. Cherry Creek State Park is also home to a 107-acre off-leash dog park which includes a fully fenced area offering water access and walking trails.



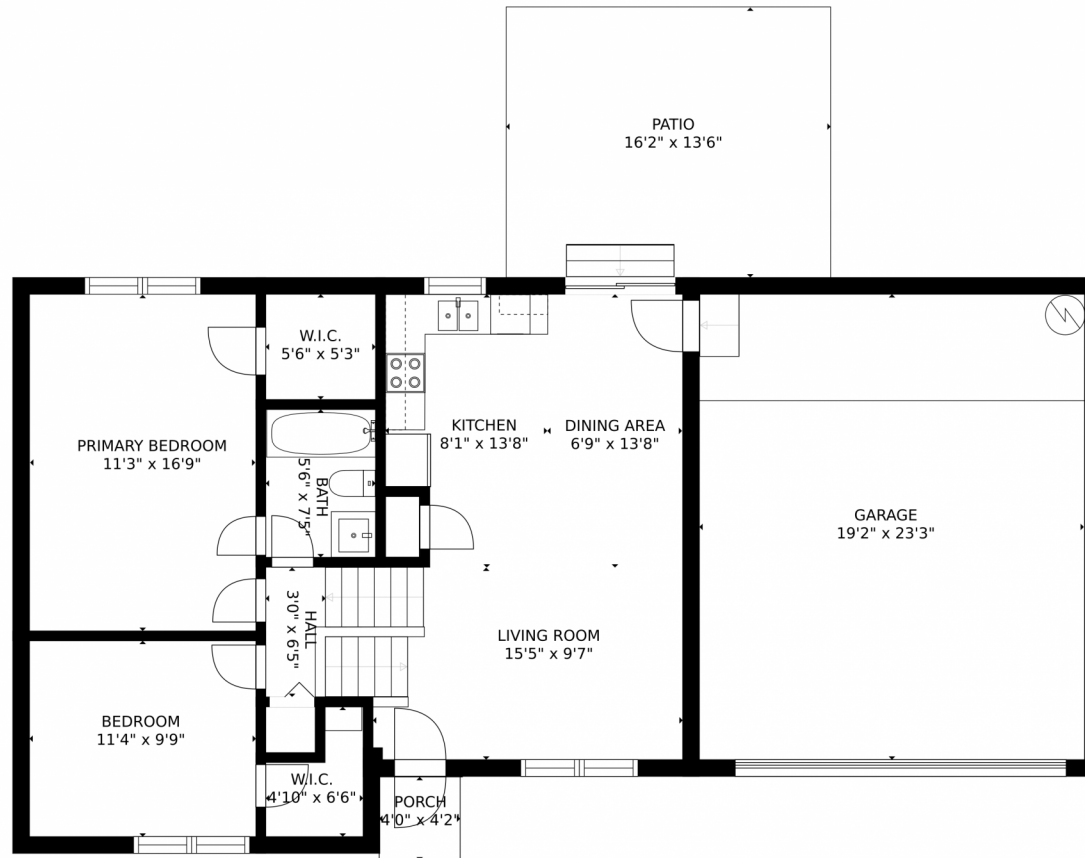
**Tatyana Sturm**  
720-350-5909  
tatyana@exitrealtydtc.com  
<https://thestorckteam.com>



Scan code  
for more  
property  
details



# 1820 S Salida Circle, Aurora, CO 80017 – Main Level



GROSS INTERNAL AREA  
FLOOR 1: 577 sq. ft. FLOOR 2: 820 sq. ft.  
EXCLUDED AREAS: GARAGE: 446 sq. ft.  
PATIO: 210 sq. ft. PORCH: 17 sq. ft.  
TOTAL: 1397 sq. ft.

MEASUREMENTS CALCULATED BY V1Photos.com ARE DEEMED HIGHLY RELIABLE BUT NOT GUARANTEED.



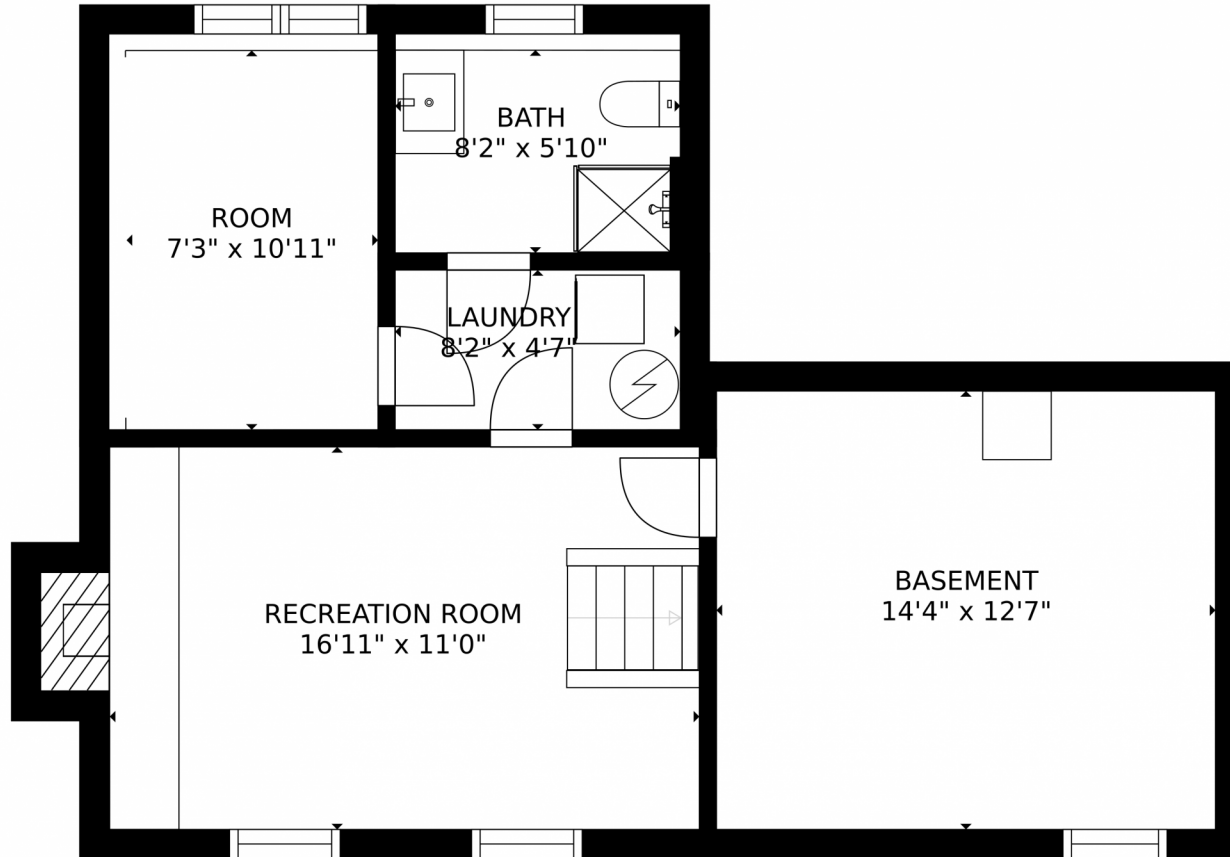
Disclaimer: Sizes and Dimensions are Approximate, Actual May Vary.



**Tatyana Sturm**  
720-350-5909  
tatyana@exitrealttydtc.com  
<https://thestorckteam.com>



1820 S Salida Circle, Aurora, CO 80017 – Basement



GROSS INTERNAL AREA  
FLOOR 1: 577 sq. ft. FLOOR 2: 820 sq. ft  
EXCLUDED AREAS: , GARAGE: 446 sq. ft  
PATIO: 210 sq. ft. PORCH: 17 sq. ft  
TOTAL: 1397 sq. ft

MEASUREMENTS CALCULATED BY V1Photos.COM ARE DEEMED HIGHLY RELIABLE BUT NOT GUARANTEED.



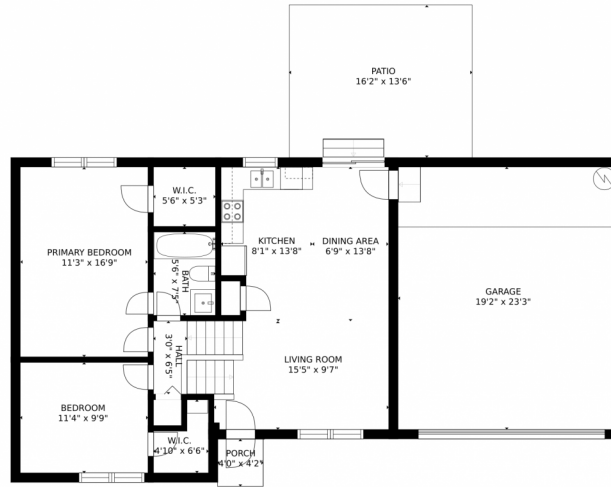
Disclaimer: Sizes and Dimensions are Approximate, Actual May Vary.



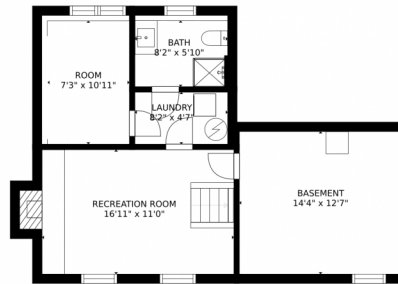
**Tatyana Sturm**  
720-350-5909  
tatyana@exitrealttydc.com  
<https://thestorckteam.com>



# 1820 S Salida Circle, Aurora, CO 80017 – All Levels



FLOOR 2



FLOOR 1

GROSS INTERNAL AREA  
FLOOR 1: 577 sq. ft., FLOOR 2: 820 sq. ft.  
EXCLUDED AREAS: , GARAGE: 446 sq. ft.  
PATIO: 210 sq. ft., PORCH: 17 sq. ft.  
TOTAL: 1397 sq. ft.

MEASUREMENTS CALCULATED BY V1Photos.COM ARE DEEMED HIGHLY RELIABLE BUT NOT GUARANTEED.



Disclaimer: Sizes and Dimensions are Approximate, Actual May Vary.



**Tatyana Sturm**  
720-350-5909  
tatyana@exitrealttydc.com  
<https://thestorckteam.com>

