



16815 E Kenyon Drive
Aurora, CO 80013
COMMUNITY: Mission Viejo

MLS # 2874414
PRICE \$525,000



Single Family 2720 SQFT 4 Beds 2/1 Baths 2 Car 0.14 Acre

PROPERTY DETAILS

Welcome Home to the Mission Viejo community of Southeast Aurora! This sparkling ranch style home has been updated from head to toe and is move in ready to the max showcasing brand new carpet and laminate flooring throughout the home along with all new interior paint, nearly all of the lighting and fixtures are brand new as well as newer appliances, water heater, doors and fencing. W-O-W!!! A thoughtfully planned main level welcomes you home with neutral finishes throughout the living room, kitchen, and three generously sized bedrooms including the owner's suite boasting a private bath and wall to wall closet for your every storage need. But wait... There's more! The basement is also fully finished offering two expansive entertainment areas along with a fourth bedroom and another bathroom. A warm and welcoming sunroom is extended from the home offering a very pleasant space for outdoor dining or an additional main level seating area as well. A partially Xeriscaped landscaping design showcases plenty of grassed area for your fur babies along with partial appealing zero maintenance spaces to save you time and money on maintenance. Opt outside and enjoy your best Colorado lifestyle in Mission Viejo featuring a robust park at the heart of the community showcasing four full baseball diamonds, a newly remastered playground, and miles of walking paths leading you throughout the neighborhood. Residents of Mission Viejo enjoy the award



Tatyana Sturm
720-350-5909
tatyana@exitrealtydtc.com
<https://thestorckteam.com>



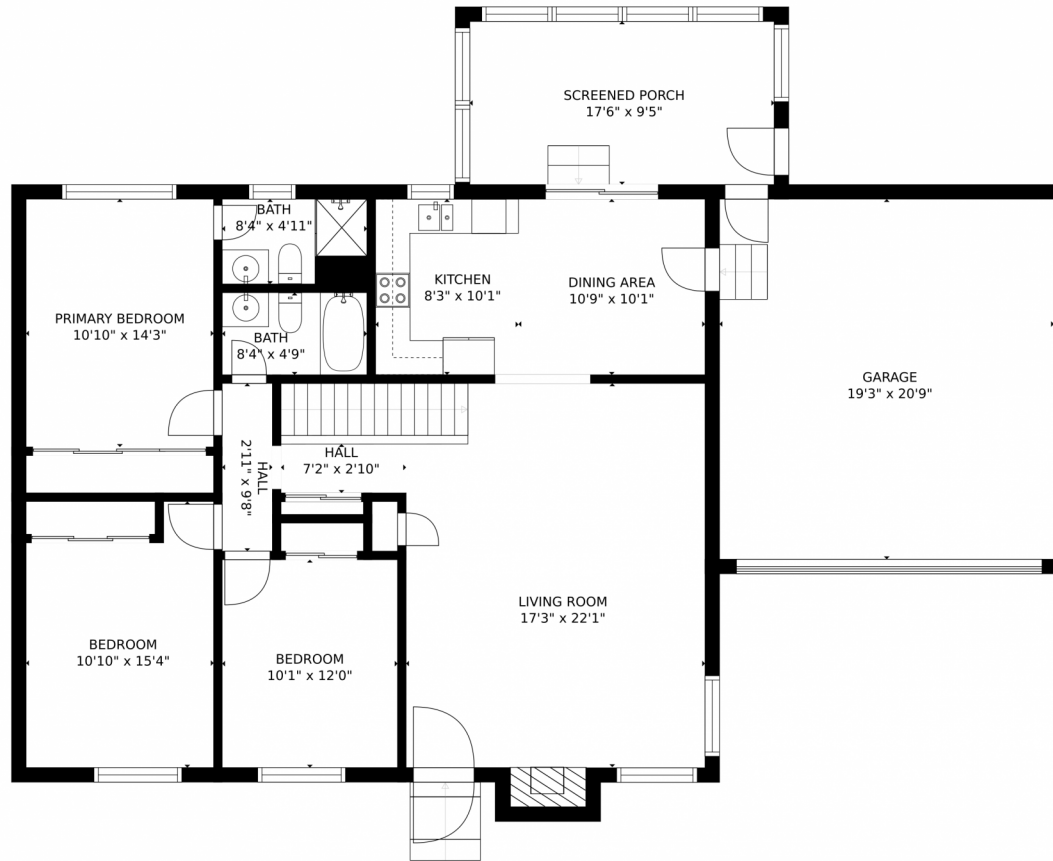
winning education system of Cherry Creek School District including its own Mission Viejo Elementary within walking distance and Smoky Hill High School. Just minutes away you will also find the Quincy Reservoir for the fisherman in your family along with the attached Grandview Dog Park for the fur baby in your life. Parker Road leading to Hwy 225 then further to I25 makes any commute a snap whether you are traveling Downtown or the DTC and beyond.



Tatyana Sturm
720-350-5909
tatyana@exitrealtydtc.com
<https://thestorckteam.com>



16815 E Kenyon Drive, Aurora, CO 80013 – Main Level



GROSS INTERNAL AREA
FLOOR 1: 1174 sq. ft., FLOOR 2: 1290 sq. ft.
EXCLUDED AREAS: , GARAGE: 399 sq. ft.
PORCH: 165 sq. ft.
TOTAL: 2464 sq. ft.
MEASUREMENTS CALCULATED BY V1Photos.com ARE DEEMED HIGHLY RELIABLE BUT NOT GUARANTEED.



Disclaimer: Sizes and Dimensions are Approximate, Actual May Vary.

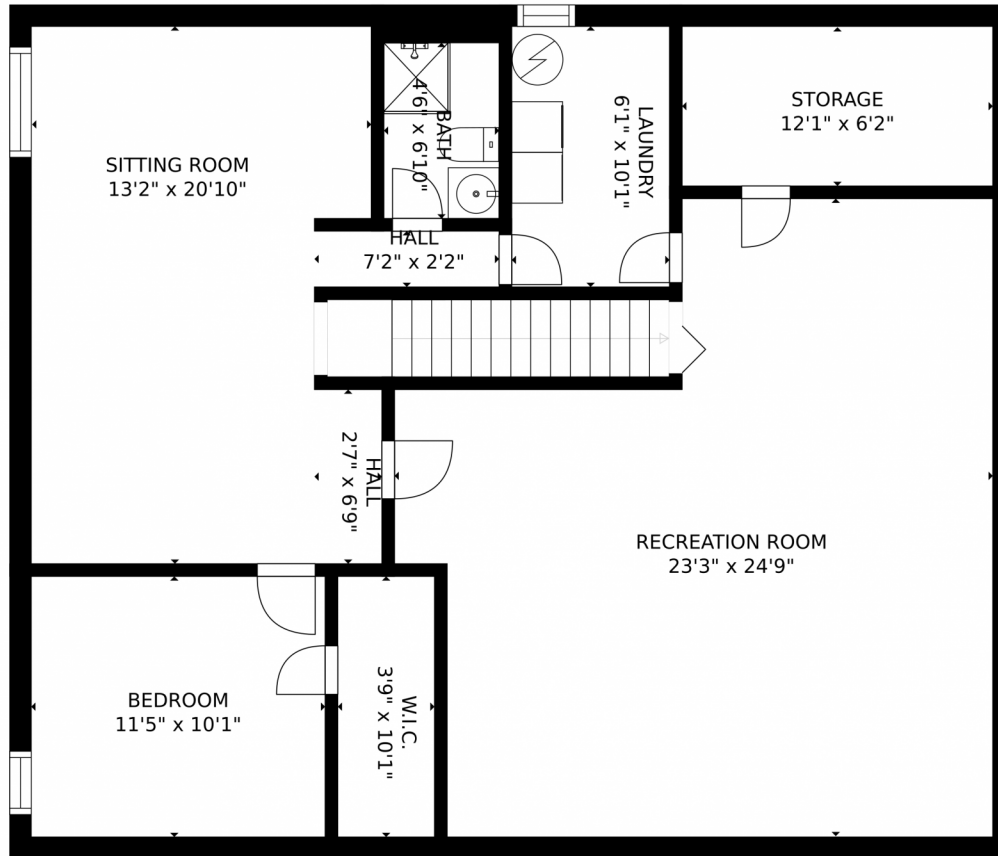


Tatyana Sturm
720-350-5909
tatyana@exitrealtydtc.com
<https://thestorckteam.com>



Scan code
for more
property
details

16815 E Kenyon Drive, Aurora, CO 80013 – Basement



GROSS INTERNAL AREA
FLOOR 1: 1174 sq. ft., FLOOR 2: 1290 sq. ft.
EXCLUDED AREAS: , GARAGE: 399 sq. ft.
PORCH: 165 sq. ft.
TOTAL: 2464 sq. ft.
MEASUREMENTS CALCULATED BY V1Photos.COM ARE DEEMED HIGHLY RELIABLE BUT NOT GUARANTEED.



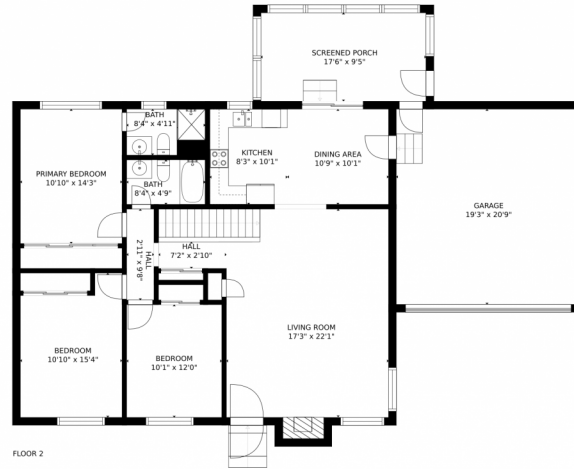
Disclaimer: Sizes and Dimensions are Approximate, Actual May Vary.



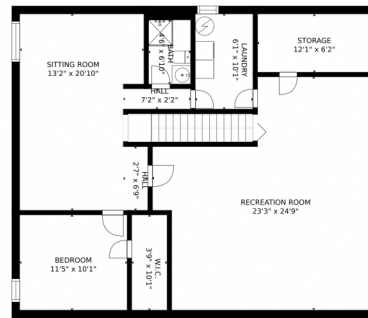
Tatyana Sturm
720-350-5909
tatyana@exitrealtydtc.com
<https://thestorckteam.com>



16815 E Kenyon Drive, Aurora, CO 80013 – All Levels



FLOOR 2



FLOOR 1

GROSS INTERNAL AREA
FLOOR 1: 1174 sq. ft., FLOOR 2: 1290 sq. ft.
EXCLUDED AREAS: , GARAGE: 399 sq. ft.
PORCH: 165 sq. ft.
TOTAL: 2464 sq. ft.

MEASUREMENTS CALCULATED BY V1Photos.com ARE DEEMED HIGHLY RELIABLE BUT NOT GUARANTEED.



Disclaimer: Sizes and Dimensions are Approximate, Actual May Vary.



Tatyana Sturm
720-350-5909
tatyana@exitrealtydtc.com
<https://thestorckteam.com>



Scan code
for more
property
details

