



6473 S Dover Street  
 Littleton, CO 80123  
 COMMUNITY: Woodmar Village

MLS # 8997272  
 PRICE \$550,000



Single Family   2058 SQFT   4 Beds   2 Baths   2 Car   0.19 Acre

## PROPERTY DETAILS

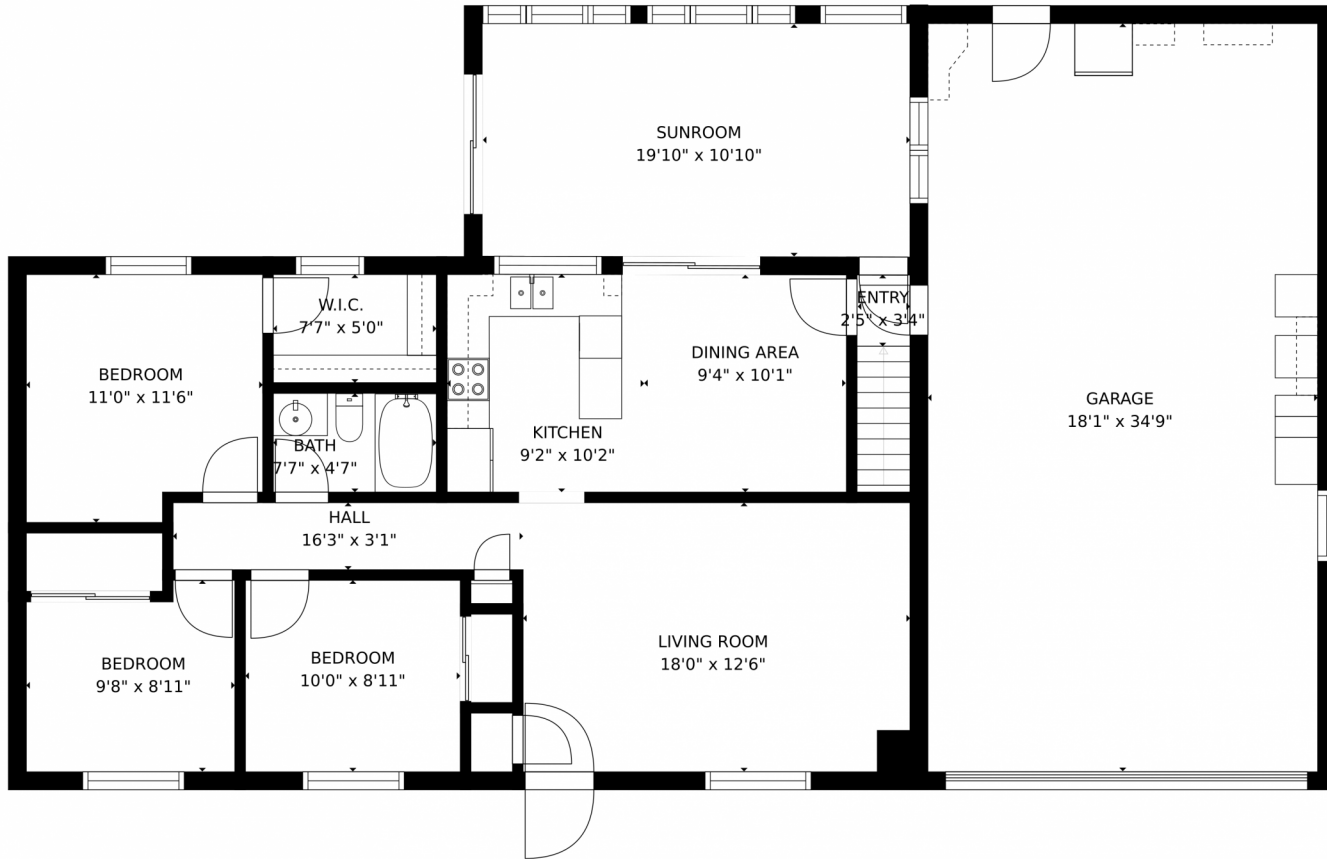
Seize the opportunity as this home is BACK ON THE MARKET! This sunny ranch-style home features engineered hardwood floors, inviting living room, main floor primary bedroom with walk in closet, plus 2 additional bedrooms, full bathroom, spacious kitchen with ample counter space, stainless steel appliances and eating area. The main floor also includes an additional 3 season sun room (not included in square footage) for relaxing, crafts, or play and a massive oversized 2 car heated garage with cabinets and work bench! The basement is fully finished with a cozy gas fireplace in the family room, large 4th bedroom with walk-in closet, 3/4 bathroom, laundry room (washer and dryer included) and storage room. Stay cool this summer with central air conditioning, double pane windows, and vinyl siding or enjoy summer BBQ's outside in the mature and private .18 acre lot with garden and shed. All you need to do is move in or add your personal touch and build equity. Buyers home warranty offered to all buyer's! This home is conveniently located near the foothills and major highways, Chatfield state park, numerous trails and parks, local eateries and various shopping. No HOA!



**Danielle Marcus**  
 303-669-7974  
 danielle@themarcusteam.com  
<https://www.themarcusteam.com>



6473 S Dover Street, Littleton, CO 80123 – 1st Floor



GROSS INTERNAL AREA  
FLOOR 1: 879 sq. ft. FLOOR 2: 1160 sq. ft.  
EXCLUDED AREAS: , GARAGE: 630 sq. ft.  
TOTAL: 2039 sq. ft.  
SIZES AND DIMENSIONS ARE APPROXIMATE, ACTUAL MAY VARY.

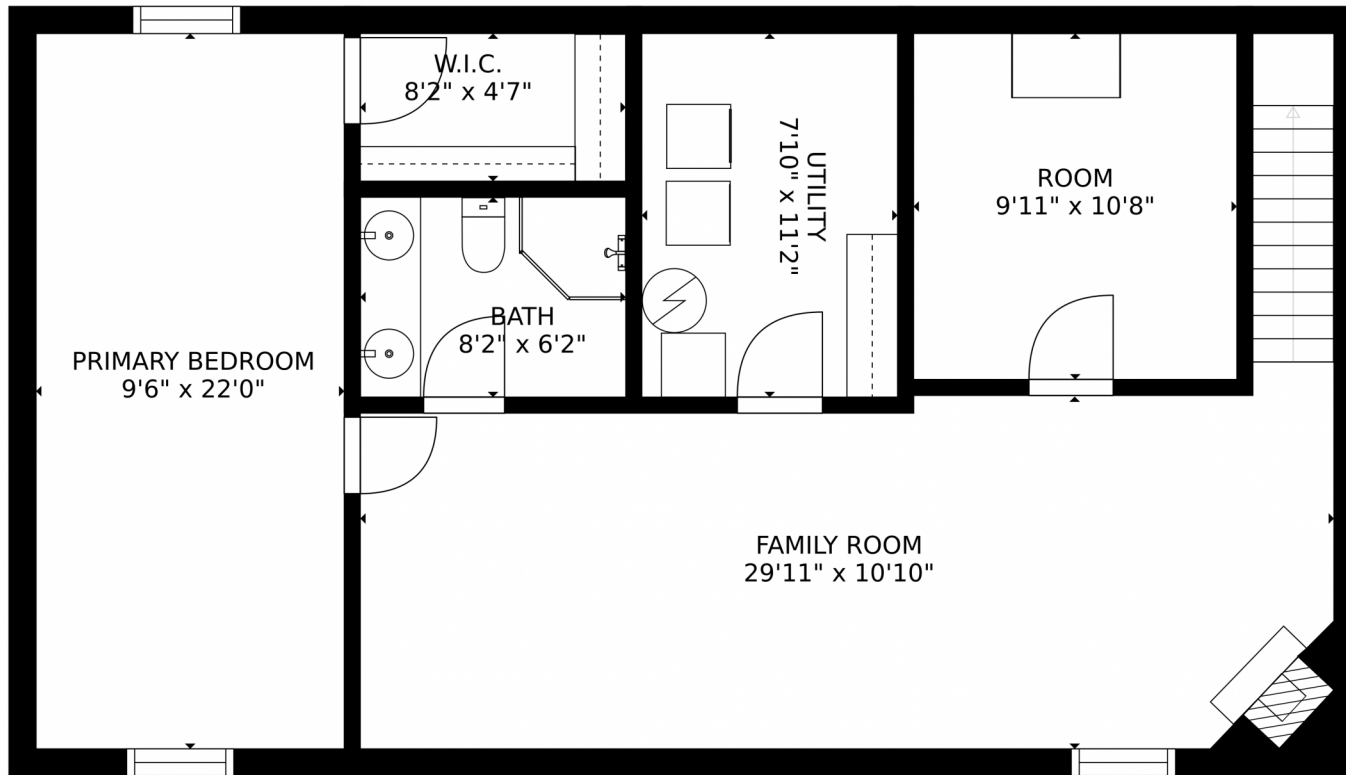


Disclaimer: Sizes and Dimensions are Approximate, Actual May Vary.



**Danielle Marcus**  
303-669-7974  
danielle@themarkusteam.com  
<https://www.themarkusteam.com>





GROSS INTERNAL AREA  
FLOOR 1: 879 sq. ft. FLOOR 2: 1160 sq. ft.  
EXCLUDED AREAS: GARAGE: 630 sq. ft.  
TOTAL: 2039 sq. ft.  
SIZES AND DIMENSIONS ARE APPROXIMATE, ACTUAL MAY VARY.



Disclaimer: Sizes and Dimensions are Approximate, Actual May Vary.



**Danielle Marcus**

303-669-7974

danielle@themarkusteam.com

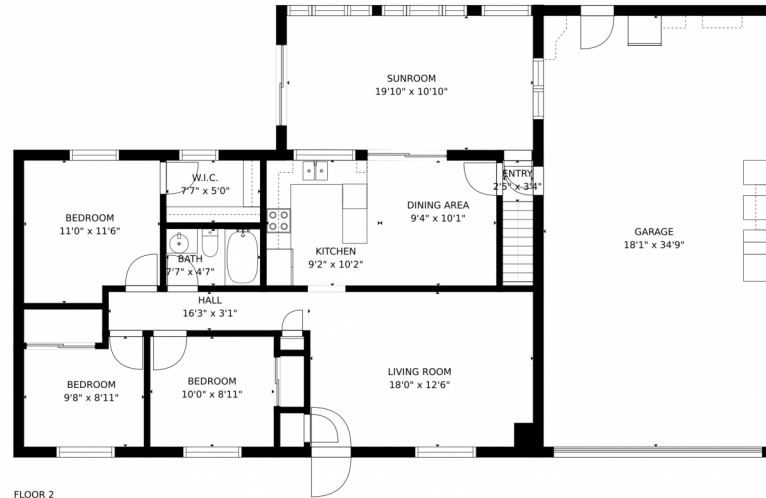
<https://www.themarkusteam.com>



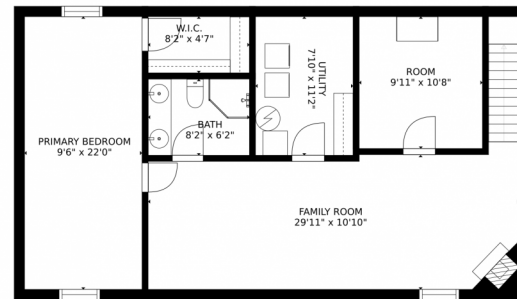
Scan code  
for more  
property  
details



# 6473 S Dover Street, Littleton, CO 80123 – All Floors



FLOOR 2



FLOOR 1

GROSS INTERNAL AREA  
FLOOR 1: 879 sq. ft, FLOOR 2: 1160 sq. ft  
EXCLUDED AREAS: , GARAGE: 630 sq. ft  
TOTAL: 2039 sq. ft  
SIZES AND DIMENSIONS ARE APPROXIMATE, ACTUAL MAY VARY.



Disclaimer: Sizes and Dimensions are Approximate, Actual May Vary.



**Danielle Marcus**  
303-669-7974  
danielle@themarkusteam.com  
<https://www.themarkusteam.com>

