



1146 North Victoria Park Road
 Fort Lauderdale, FL 33304
 COMMUNITY: PROGRESSO



Single Family



1045 SQFT



2 Beds



1 Baths



1 Car



0.14 Acre

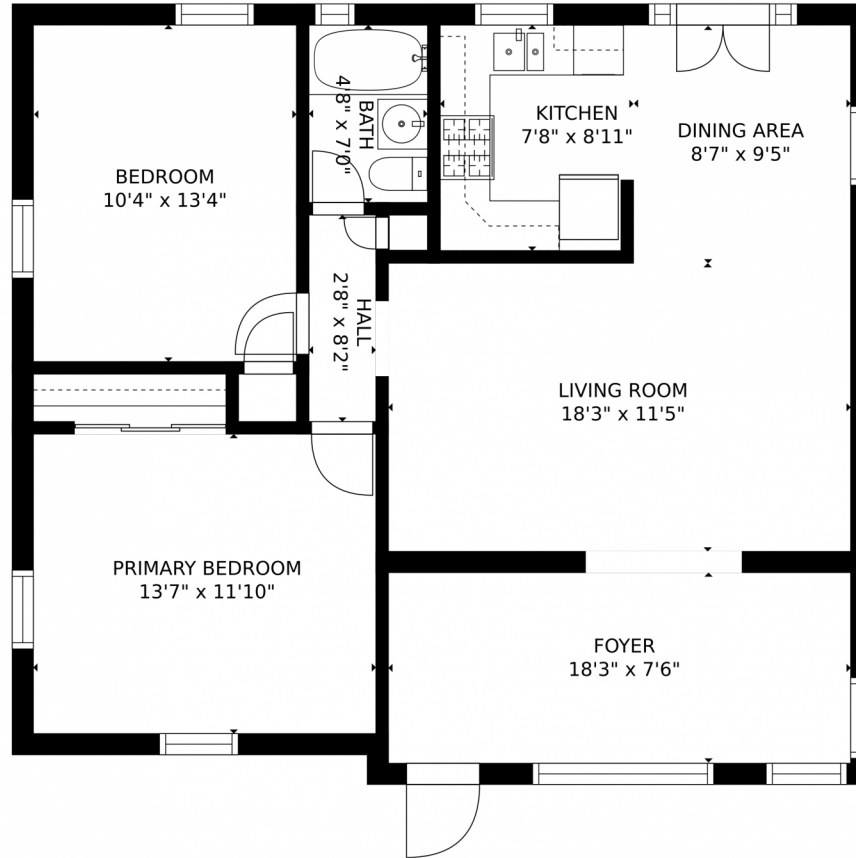


Luis Nunez
 954-594-0094
 luisnunezrealestate@gmail.com



Scan code
 for more
 property
 details





GROSS INTERNAL AREA
FLOOR 1: 927 sq. ft
TOTAL: 927 sq. ft
SIZES AND DIMENSIONS ARE APPROXIMATE, ACTUAL MAY VARY.



Disclaimer: Sizes and Dimensions are Approximate, Actual May Vary.



Luis Nunez
954-594-0094
luisnunezrealestate@gmail.com

