

1620 Poinsettia Drive



 Single Family  2278 SQFT  4 Beds  3 Baths  0.2 Acre

PROPERTY DETAILS

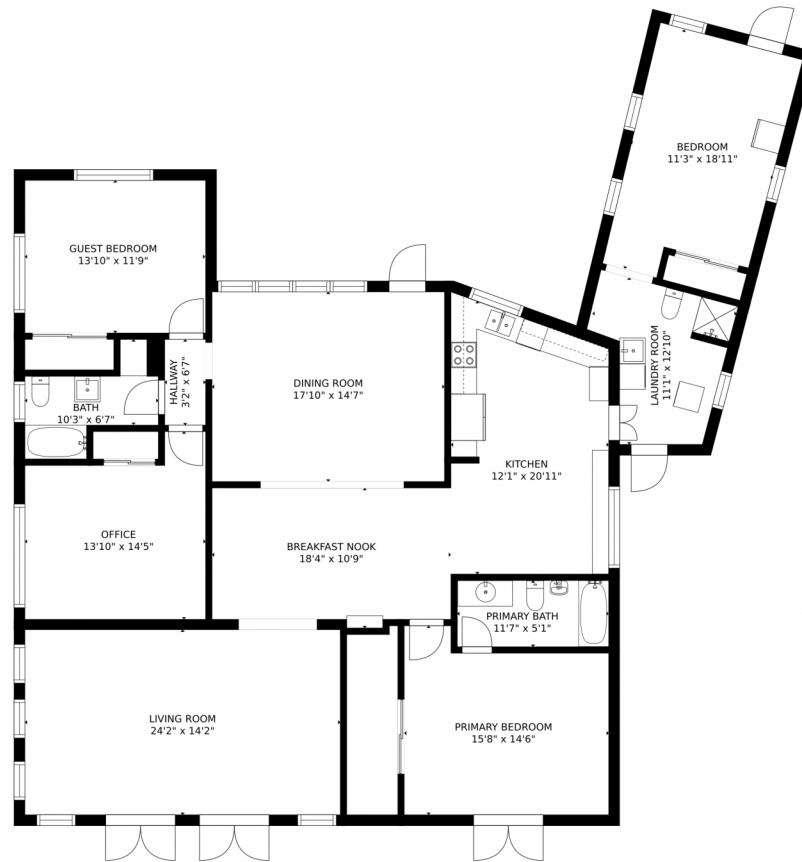
This Light & Bright, Open concept 4 Bedroom & 3 Bath home is a rare find on one of the best streets in Poinsettia Heights with over 2,200 Sq Ft! This lovely home features include Formal Living Room & Dining Room, a huge Eat-in dream Kitchen with Stainless Steel appliances lots of granite counters & storage, Triple Split Floor Plan, Large Master Bedroom with En-suite Bath & French Doors to the pool. Huge Family Room with additional access to the private Tropical Oasis Pool, Sundek, Dining Area & Fenced yard. 4th Bedroom could be perfect as an In-Law Suite, Art Studio/Home Office or Source of Additional Income (has an additional private entrance). All Impact Doors and Windows, Covered Carport, Massive circular Paver Driveway. This home is ideal for people who love to entertain.



Chris Toomey
954-701-0005
chris@christoomey.com
<https://www.chrissoldittoomey.com/>



1620 Poinsettia Drive, Fort Lauderdale, FL 33305 – Main Floor



GROSS INTERNAL AREA
FLOOR 1: 2216 sq. ft
TOTAL: 2216 sq. ft
SIZES AND DIMENSIONS ARE APPROXIMATE, ACTUAL MAY VARY.



Disclaimer: Sizes and Dimensions are Approximate, Actual May Vary.



Chris Toomey
954-701-0005
chris@christoomey.com
<https://www.chrissoldittoomey.com/>

