



10356 Horizon View Drive
 Morrison, CO 80465
 COMMUNITY: Hilldale Pines

MLS # 6276212
 PRICE \$760,000



Single Family 2780 SQFT 3 Beds 3 Baths 5.56 Acre

PROPERTY DETAILS

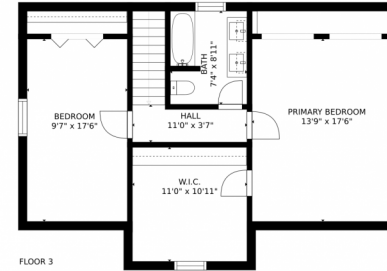
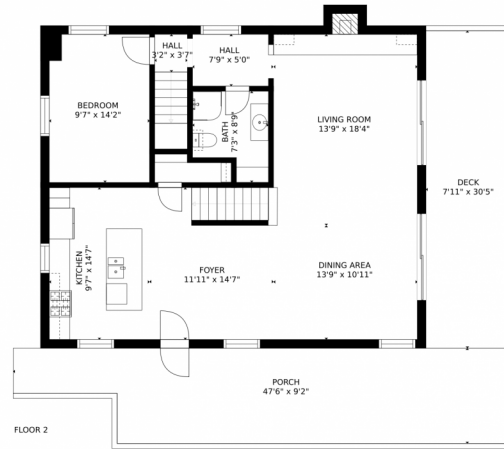
Located in the established neighborhood of Hilldale Pines, you'll enjoy the peace and solitude of this 5.5 acre property in the foothills. Natural light floods throughout the home. A chef's dream kitchen with upgraded appliances and an extra large island perfect for entertaining. The main floor also features a guest bedroom and 3/4 bathroom, great for out of town friends or family. Upstairs, a large Primary bedroom, additional bedroom, and full bathroom. The lower level includes a family room, bonus room, and 3/4 bathroom. Take in the one of a kind views through numerous windows perfectly positioned all over this home and enjoy the jaw dropping sunrises and sunsets outside on your private deck. Hoa is voluntary, not required. Just minutes to Conifer and easy access to 285/ 470. Convenient 285 commute to the metro area stays consistent year-round. You'll love the location with easy access to endless outdoor activities in nearby Jeffco Open Space Parks or Staunton State Park. This beautiful home will soon be your retreat in the mountains! The home has a 4 person/2 bed Septic.



Sylvia Dorrance
 303-596-7296
 Sylvia@sylviadorrancegroup.com
<https://www.sylviadorrancegroup.com/>



10356 Horizon View Drive, Morrison, CO 80465 – All Floors



GROSS INTERNAL AREA
FLOOR 1: 1023 sq. ft, FLOOR 2: 1038 sq. ft
FLOOR 3: 754 sq. ft, EXCLUDED AREAS:
DECK: 242 sq. ft, PORCH: 386 sq. ft
TOTAL: 2814 sq. ft
SIZES AND DIMENSIONS ARE APPROXIMATE, ACTUAL MAY VARY.



Disclaimer: Sizes and Dimensions are Approximate, Actual May Vary.



Sylvia Dorrance

303-596-7296

Sylvia@sylviadorrancegroup.com

<https://www.sylviadorrancegroup.com/>



Scan code
for more
property
details

