



Single Family



3379 SQFT



5 Beds



3/1 Baths



2 Car



0.08 Acre

## PROPERTY DETAILS

Fabulous Painted Lady by Parkwood Homes in Central Park \* Fantastic south facing 4-story, highly upgraded home features both city and mountain views & multiple indoor/outdoor living spaces!! Thoughtfully detailed, ornamental design aesthetic, 10 foot ceilings, energy efficient & open floorplan \* Welcoming covered front porch \*Gourmet kitchen features stainless appliances, quartz counters, breakfast bar plus large glass slider opening to a terrific indoor/outdoor fully covered deck. 5 bedrooms and 4 bathrooms (includes TWO master bedrooms w/ en suite bathrooms). Private upper master suite has covered outdoor sleeping porch, reading nook or private hideaway!! 3 bedrooms on one floor w/ versatile flex space perfect for "teen room" or TV area . Lower level master suite ideal for guest(s) or nanny. Open layout and bay windows flood the home with natural light. Character can be found throughout with window casings, crown moldings, baseboards and millwork trim. Mudroom to the oversized attached garage. Tankless hot water heater & dual HVAC. Lovely elevated & fenced front yard w/ side yard too!! Quick access to DIA and Anschutz Medical Campus, and just steps away from trails, basketball courts, parks, swimming pools, The Rocky Mountain Arsenal w/ tons of trails and great bird watching, top-rated schools, great shopping & tons of restaurants!



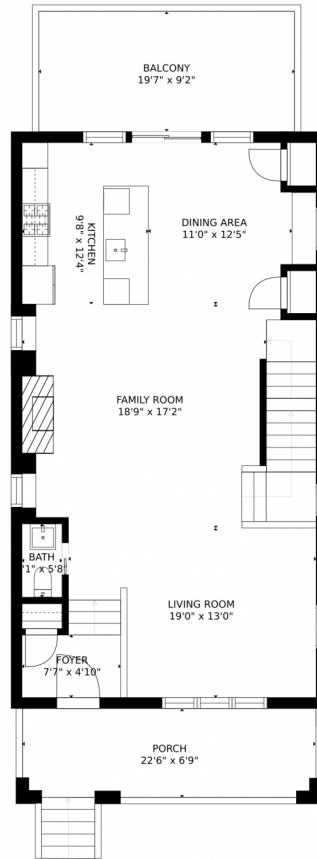
**Suellen Mack**  
303-378-6310  
mack12@comcast.net



Scan code  
for more  
property  
details



9621 East 59th Drive, Denver, CO 80238 – 1st Floor



GROSS INTERNAL AREA  
FLOOR 1: 475 sq. ft. FLOOR 2: 960 sq. ft.  
FLOOR 3: 960 sq. ft. FLOOR 4: 559 sq. ft.  
EXCLUDED AREAS: GARAGE: 466 sq. ft.  
BALCONY: 297 sq. ft. PORCH: 153 sq. ft.  
TOTAL: 2954 sq. ft.

MEASUREMENTS ARE CALCULATED BY CUBICASA TECHNOLOGY. DEEMED HIGHLY RELIABLE BUT NOT GUARANTEED.

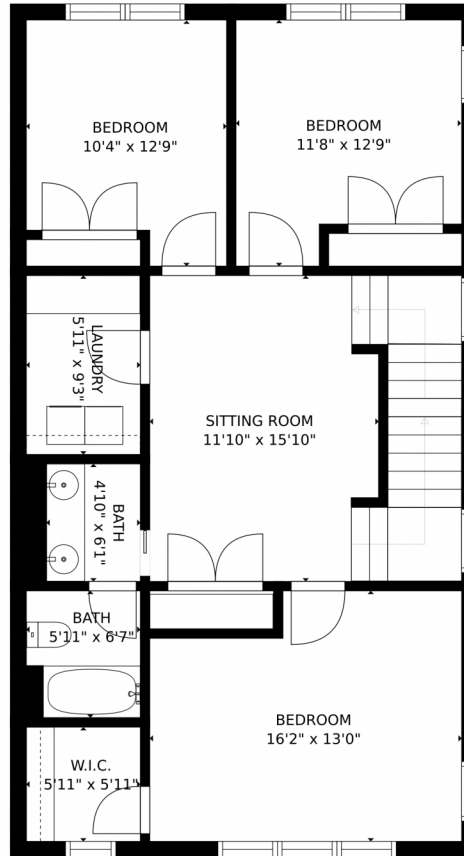


Disclaimer: Sizes and Dimensions are Approximate, Actual May Vary.



**Suellen Mack**  
303-378-6310  
mack12@comcast.net





GROSS INTERNAL AREA  
FLOOR 1: 475 sq. ft. FLOOR 2: 960 sq. ft.  
FLOOR 3: 960 sq. ft. FLOOR 4: 559 sq. ft.  
EXCLUDED AREAS: , GARAGE: 466 sq. ft.  
BALCONY: 297 sq. ft. PORCH: 153 sq. ft.  
TOTAL: 2954 sq. ft.

MEASUREMENTS ARE CALCULATED BY CUBICASA TECHNOLOGY. DEEMED HIGHLY RELIABLE BUT NOT GUARANTEED.



Disclaimer: Sizes and Dimensions are Approximate, Actual May Vary.

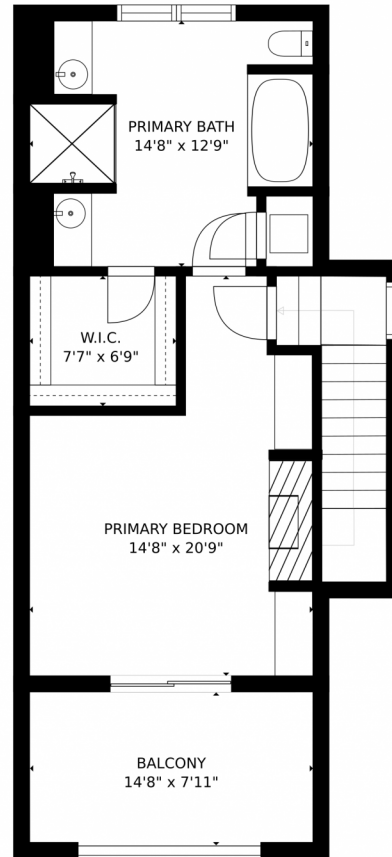


**Suellen Mack**  
303-378-6310  
mack12@comcast.net



Scan code  
for more  
property  
details





GROSS INTERNAL AREA  
FLOOR 1: 475 sq. ft, FLOOR 2: 960 sq. ft  
FLOOR 3: 960 sq. ft, FLOOR 4: 559 sq. ft  
EXCLUDED AREAS: , GARAGE: 466 sq. ft  
BALCONY: 297 sq. ft, PORCH: 153 sq. ft  
TOTAL: 2954 sq. ft

MEASUREMENTS ARE CALCULATED BY CUBICASA TECHNOLOGY. DEEMED HIGHLY RELIABLE BUT NOT GUARANTEED.



Disclaimer: Sizes and Dimensions are Approximate, Actual May Vary.

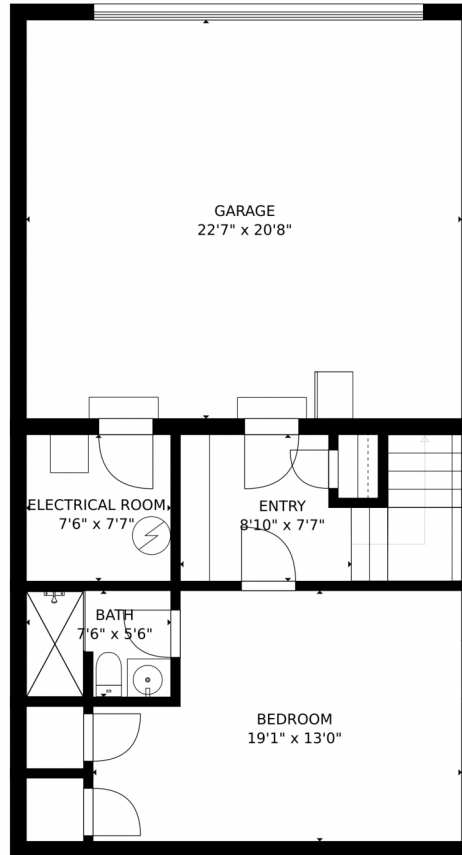


**Suellen Mack**  
303-378-6310  
mack12@comcast.net



Scan code  
for more  
property  
details





GROSS INTERNAL AREA  
FLOOR 1: 475 sq. ft. FLOOR 2: 960 sq. ft.  
FLOOR 3: 960 sq. ft. FLOOR 4: 559 sq. ft.  
EXCLUDED AREAS: , GARAGE: 466 sq. ft.  
BALCONY: 297 sq. ft. PORCH: 153 sq. ft.  
TOTAL: 2954 sq. ft.

MEASUREMENTS ARE CALCULATED BY CUBICASA TECHNOLOGY. DEEMED HIGHLY RELIABLE BUT NOT GUARANTEED.



Disclaimer: Sizes and Dimensions are Approximate, Actual May Vary.



**Suellen Mack**  
303-378-6310  
mack12@comcast.net



Scan code  
for more  
property  
details



# 9621 East 59th Drive, Denver, CO 80238 – All Floors



GROSS INTERNAL AREA  
 FLOOR 1: 475 sq. ft. FLOOR 2: 960 sq. ft.  
 FLOOR 3: 960 sq. ft. FLOOR 4: 559 sq. ft.  
 EXCLUDED AREAS: GARAGE: 466 sq. ft.  
 BALCONY: 297 sq. ft. PORCH: 153 sq. ft.  
 TOTAL: 2954 sq. ft.

MEASUREMENTS ARE CALCULATED BY CUBICASA TECHNOLOGY. DEEMED HIGHLY RELIABLE BUT NOT GUARANTEED.



Disclaimer: Sizes and Dimensions are Approximate, Actual May Vary.



**Suellen Mack**  
 303-378-6310  
 mack12@comcast.net



Scan code  
 for more  
 property  
 details

