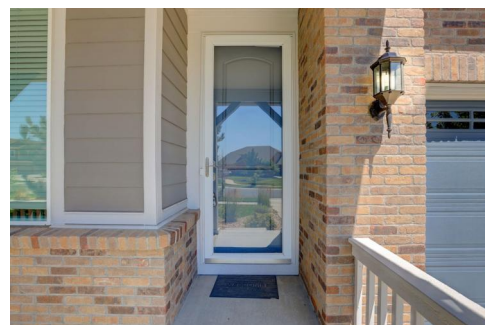




24377 E Davies Place  
 Aurora, CO 80016  
 COMMUNITY: Tallyns Reach North

MLS # 4330973  
 PRICE \$649,900



Single Family



2898 SQFT



3 Beds



2/1 Baths



2 Car



0.17 Acre

## PROPERTY DETAILS

SEE YOURSELF IN THIS LOVELY MAINTAINED HOME IN THE HIGHLY DESIRED TALLYN'S REACH COMMUNITY! \*LOCATED IN A CUL-DE-SAC\* THIS HOME HAS AN AWESOME FLOORPLAN, STAMPED CONCRETE BACK PATIO WITH ROOM FOR SEATING & EATING AND A HOT TUB THAT STAYS AND IS ONLY 1 YEAR OLD! PERFECT YARD FOR ENTERTAINING AND HOSTING SUMMER BBQ'S AND YARD GAMES. MAIN FLOOR FEATURES HARDWOOD FLOORS THROUGHOUT FOR QUICK & EASY CLEANING, FRONT LIVING AREA, 1/2 BATH, DINING AREA, FAMILY ROOM WITH FIREPLACE FOR THOSE COLD COLORADO NIGHTS, KITCHEN WITH ISLAND & ISLAND SEATING, GRANITE COUNTERS, ALL APPLIANCES AND A HUGE WALK IN PANTRY TO STORE ALL OF YOUR FAVORITES! UPSTAIRS FEATURES LARGE LOFT SPACE FOR HOME OFFICE OR HANG OUT PLACE, 2 SECONDARY BEDROOMS WITH A FULL SHARED BATH INCLUDING DOUBLE SINKS, PRIMARY BEDROOM WITH 5 PIECE BATH, AND LAUNDRY IS LOCATED ON THIS SAME LEVEL! PLENTY OF ROOM IN THE UNFINISHED BASEMENT TO ADD EXTRA LIVING SPACE TO YOUR LIKING! THIS LOCATION GIVES YOU ACCESS TO MANY PARKS & TRAILS AS WELL AS THE COMMUNITY POOL & CLUBHOUSE TO ENJOY! WALKING DISTANCE TO COYOTE HILLS ELEMENTARY AND MINUTES AWAY FROM SOUTHLANDS MALL, RESTAURANTS, SADDLE ROCK GOLF COURSE, & E-470



Debra Juel-Stevens  
 303-941-6210  
 juelstevens@aol.com



Scan code  
 for more  
 property  
 details



FOR QUICK ACCESS TO DIA AND I-25.

SELLERS HAVE REPLACED THE WINDOWS IN THIS HOME AS WELL AS THE BACK PATIO FRENCH DOORS TO HELP KEEP COOL IN THE SUMMER AND WARMTH IN THE WINTER - WITH TRANSFERABLE WARRANTY!! NEW EXTERIOR PAINT IN 2021 ALSO WITH TRANSFERABLE WARRANTY!! ROOF REPLACED IN 2014!!

ADDITIONAL AND PROFESSIONAL PHOTOS TO COME, BUT WANTED TO GET ON THE MARKET QUICKLY!! THIS HOME NEEDS TO BE ON YOUR LIST TO SEE NOW - QUICK CLOSE & QUICK POSSESSION!

DISCLOSURE: SELLER AND SELLERS AGENT ARE RELATED!

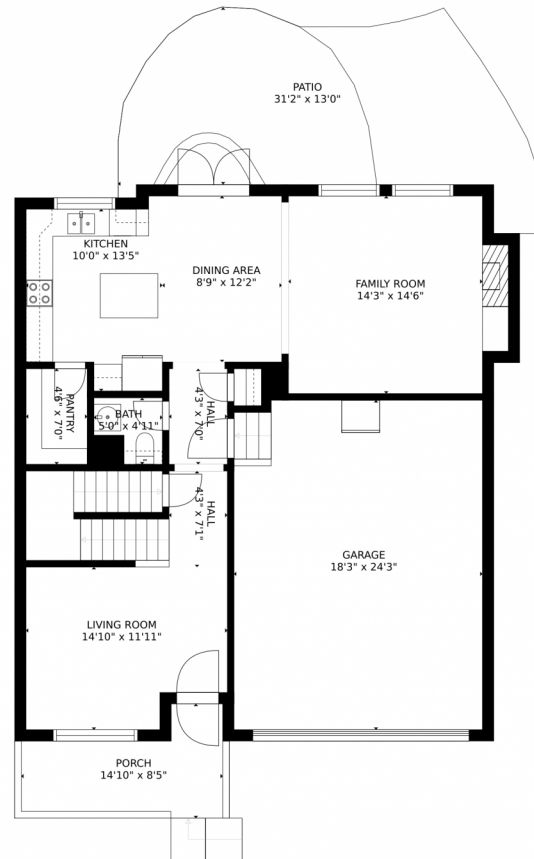


---

**Debra Juel-Stevens**  
303-941-6210  
juelstevens@aol.com



# 24377 E Davies Place, Aurora, CO 80016 – Main Level



GROSS INTERNAL AREA  
FLOOR 1: 591 sq. ft. FLOOR 2: 847 sq. ft.  
FLOOR 3: 1213 sq. ft. EXCLUDED AREAS:  
GARAGE: 440 sq. ft. PATIO: 345 sq. ft.  
PORCH: 100 sq. ft.  
TOTAL: 2651 sq. ft.  
SIZES AND DIMENSIONS ARE APPROXIMATE, ACTUAL MAY VARY.

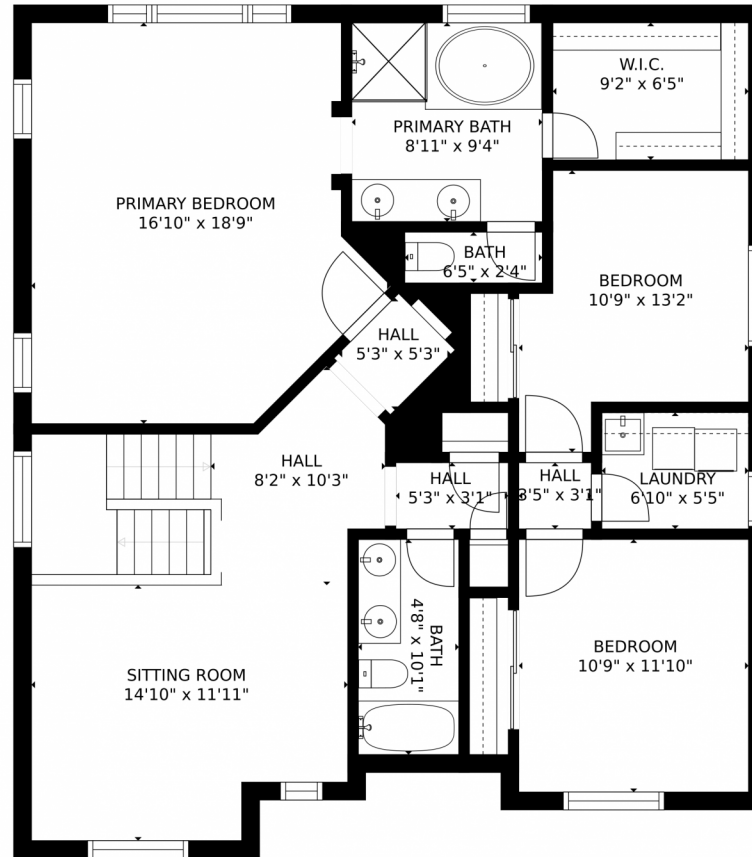


Disclaimer: Sizes and Dimensions are Approximate, Actual May Vary.

Debra Juel-Stevens  
303-941-6210  
juelstevens@aol.com



# 24377 E Davies Place, Aurora, CO 80016 – Upper Level



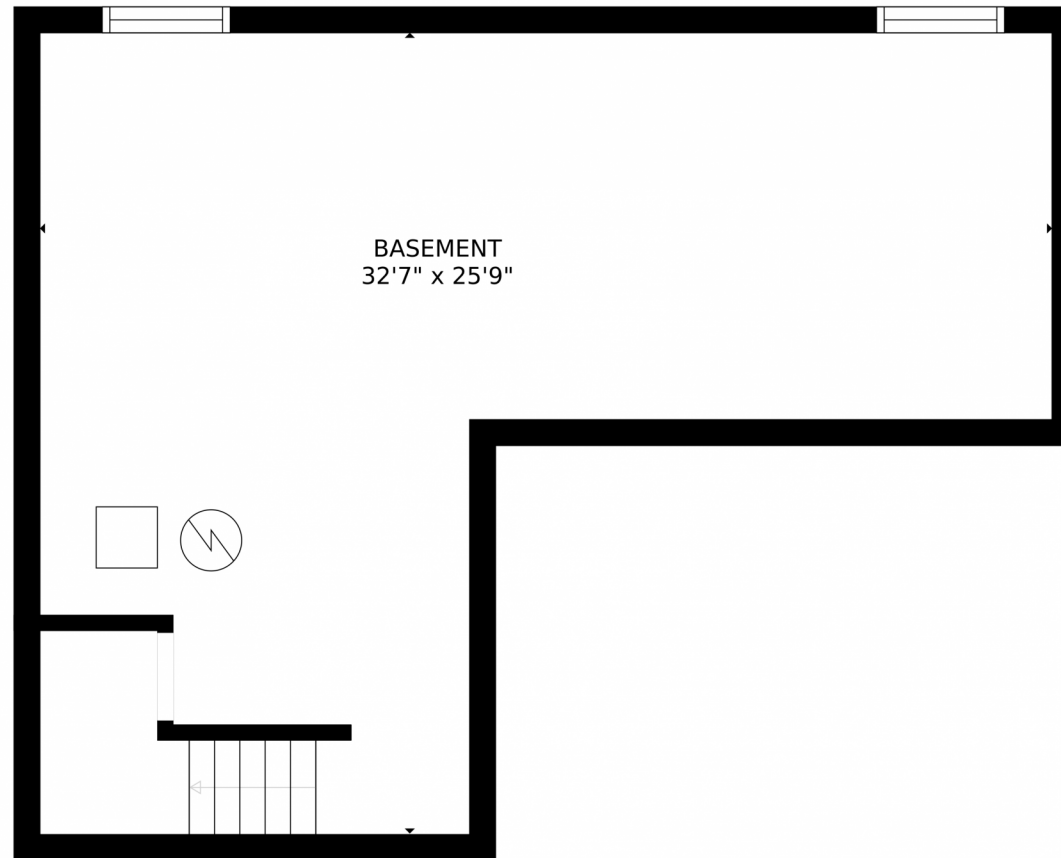
GROSS INTERNAL AREA  
FLOOR 1: 591 sq. ft. FLOOR 2: 847 sq. ft.  
FLOOR 3: 1213 sq. ft. EXCLUDED AREAS:  
GARAGE: 440 sq. ft. PATIO: 345 sq. ft.  
PORCH: 100 sq. ft.  
TOTAL: 2651 sq. ft.  
SIZES AND DIMENSIONS ARE APPROXIMATE, ACTUAL MAY VARY.



Disclaimer: Sizes and Dimensions are Approximate, Actual May Vary.

Debra Juel-Stevens  
303-941-6210  
juelstevens@aol.com





GROSS INTERNAL AREA  
FLOOR 1: 591 sq. ft. FLOOR 2: 847 sq. ft.  
FLOOR 3: 1213 sq. ft. EXCLUDED AREAS:  
GARAGE: 440 sq. ft. PATIO: 345 sq. ft.  
PORCH: 100 sq. ft.  
TOTAL: 2651 sq. ft.  
SIZES AND DIMENSIONS ARE APPROXIMATE, ACTUAL MAY VARY.



Disclaimer: Sizes and Dimensions are Approximate, Actual May Vary.

# 24377 E Davies Place, Aurora, CO 80016 – All Levels



GROSS INTERNAL AREA  
FLOOR 1: 591 sq. ft, FLOOR 2: 847 sq. ft  
FLOOR 3: 1213 sq. ft, EXCLUDED AREAS:  
GARAGE: 440 sq. ft, PATIO: 345 sq. ft  
PORCH: 100 sq. ft  
TOTAL: 2651 sq. ft  
SIZES AND DIMENSIONS ARE APPROXIMATE, ACTUAL MAY VARY.

Disclaimer: Sizes and Dimensions are Approximate, Actual May Vary.

Debra Juel-Stevens  
303-941-6210  
juelstevens@aol.com

