





 Townhouse

 2358 SQFT

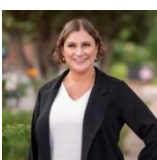
 4 Beds

 3/1 Baths

 2 Car

PROPERTY DETAILS

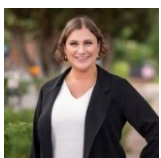
Brand new townhome with TWO primary bedroom suites (built in June 2022) in Prospect Village at Sterling Ranch! A new build without the wait time! This end unit townhome located on an "Icon" corner lot has breathtaking mountain views that you can see from the bedroom window and an extended covered patio. This spacious home has 2,358 finished square feet with 9' ceilings on the main level. Walking into an open floor plan, with luxury laminate flooring, where your kitchen, dining and great room flow perfectly for entertaining. A stylish kitchen with 42" white cabinets, soft close drawers, quartz countertops, center island, full tile backsplash, stainless steel stove hood, upgraded stainless steel appliances with 36" gas cooktop, microwave, oven, large single basin drop in sink with luxury facet, and a Samsung Bespoke refrigerator with customizable panels (credit to buyer to select preferences), and a separate coffee bar next to the pantry. All appliances are included with a transferable warranty! Beautiful main level master suite with a full bathroom and walk in closet. Second level has another master suite bedroom with 5 piece bath, including an upgraded shower with a second rainfall shower head. This bedroom also has and two oversized walk-in closets. Across the hall you will find two more bedrooms with another full bath, as well as the spacious laundry room. This home has 14 solar panels already installed with a transferable lease to minimize future electric bills. Explore two nearby state parks, Downtown Littleton's growing restaurant scene, local breweries, amazing community



Maryann Nabholz
248-345-7250
maryannnabholz@kw.com



amenities, or access the 30 miles of trails nearby. Quick possession!

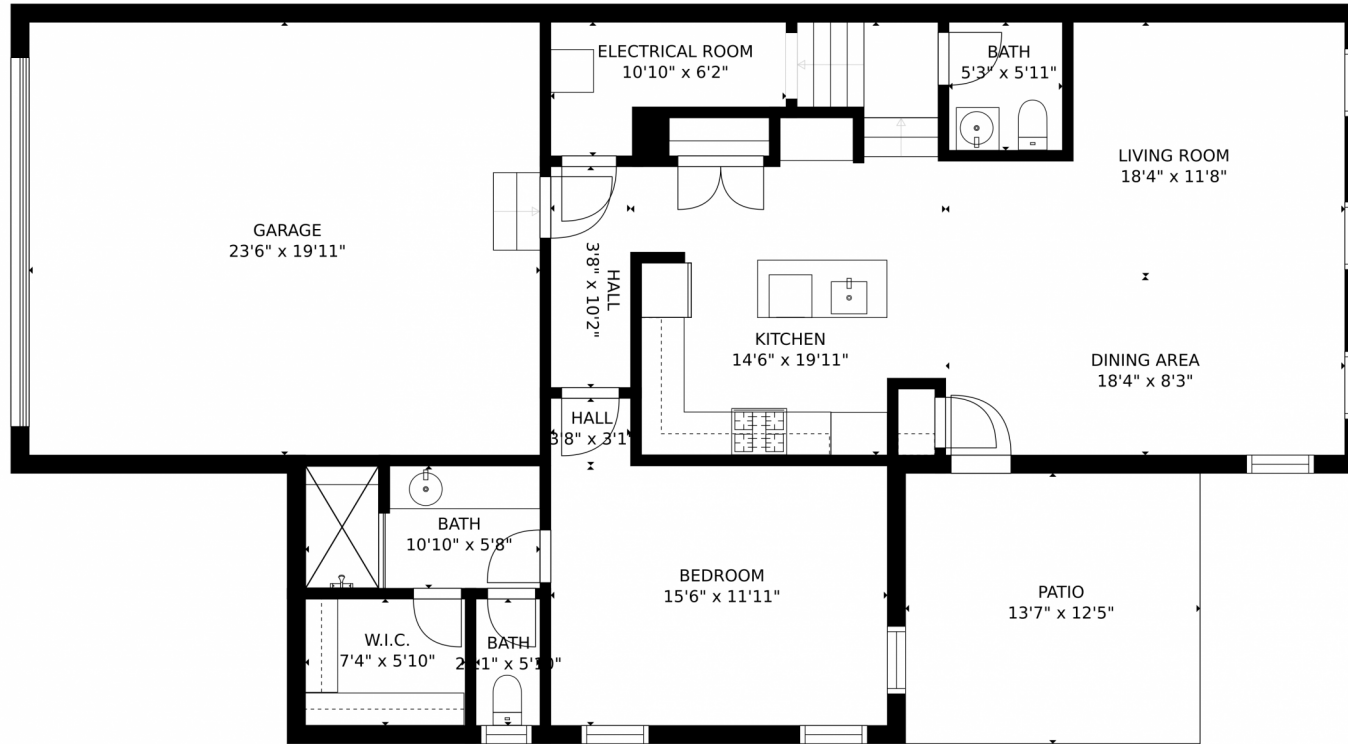


Maryann Nabholz
248-345-7250
maryannabholz@kw.com



Scan code
for more
property
details





GROSS INTERNAL AREA
FLOOR 1: 1056 sq. ft, FLOOR 2: 1206 sq. ft
EXCLUDED AREAS: , GARAGE: 468 sq. ft
PATIO: 169 sq. ft
TOTAL: 2262 sq. ft
SIZES AND DIMENSIONS ARE APPROXIMATE, ACTUAL MAY VARY.



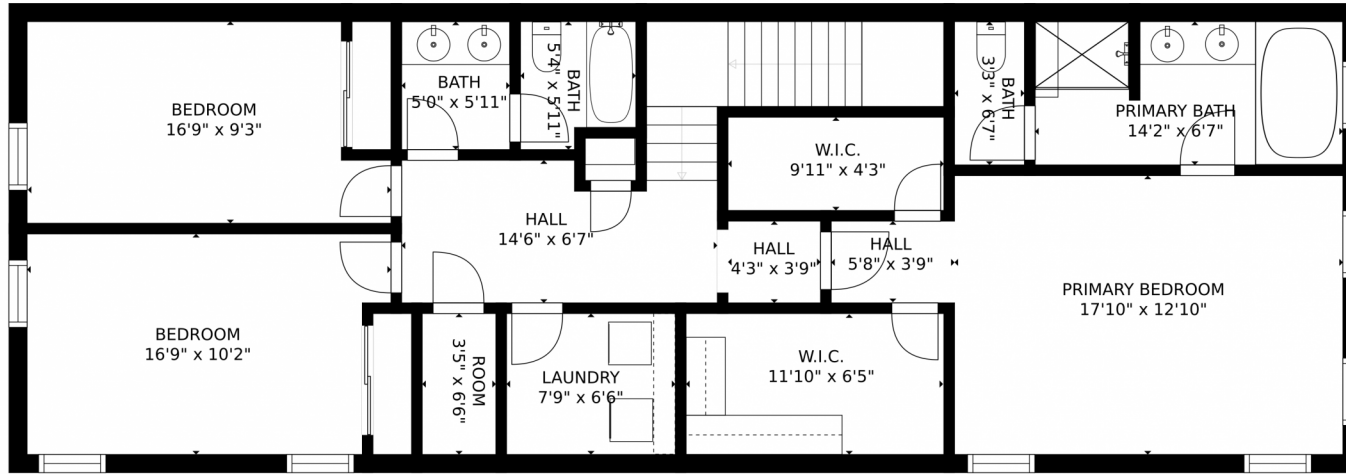
Disclaimer: Sizes and Dimensions are Approximate, Actual May Vary.



Maryann Nabholz
248-345-7250
maryannnabholz@kw.com



8397 Mount Ouray Road, Littleton, CO 80125 – Second Level



GROSS INTERNAL AREA
FLOOR 1: 1056 sq. ft. FLOOR 2: 1206 sq. ft.
EXCLUDED AREAS: GARAGE: 468 sq. ft.
PATIO: 169 sq. ft.
TOTAL: 2262 sq. ft.
SIZES AND DIMENSIONS ARE APPROXIMATE, ACTUAL MAY VARY.



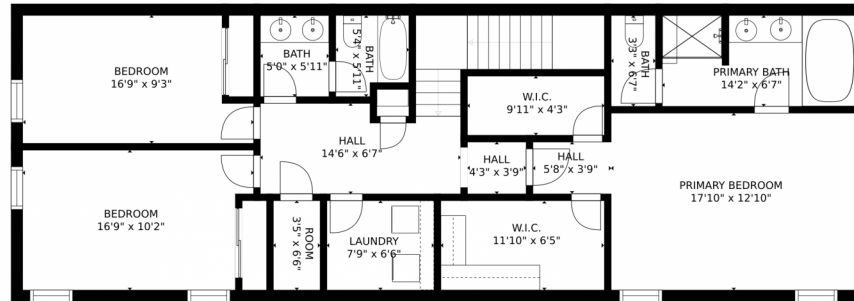
Disclaimer: Sizes and Dimensions are Approximate, Actual May Vary.



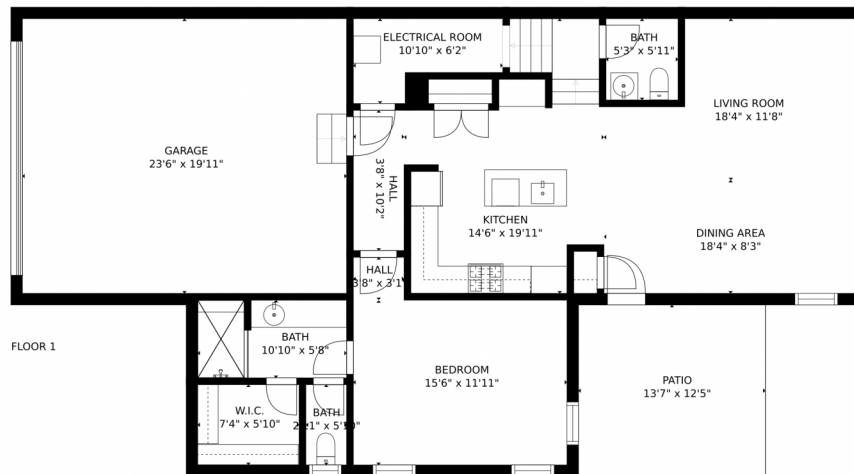
Maryann Nabholz
248-345-7250
maryannnabholz@kw.com



8397 Mount Ouray Road, Littleton, CO 80125 – All Levels



FLOOR 2



FLOOR 1

GROSS INTERNAL AREA
FLOOR 1: 1056 sq. ft, FLOOR 2: 1206 sq. ft
EXCLUDED AREAS: , GARAGE: 468 sq. ft
PATIO: 169 sq. ft
TOTAL: 2262 sq. ft
SIZES AND DIMENSIONS ARE APPROXIMATE, ACTUAL MAY VARY.



Disclaimer: Sizes and Dimensions are Approximate, Actual May Vary.



Maryann Nabholz
248-345-7250
maryannnabholz@kw.com

