



9023 Apache Plume Drive  
Parker, CO 80134  
COMMUNITY: Cottonwood South Condos



Condominium



1568 SQFT



3 Beds



1/2 Baths



1 Car



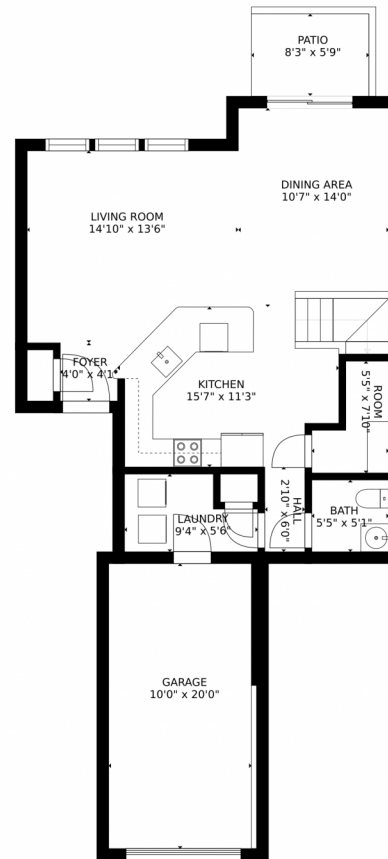
Jason Cassidy  
720-220-6964  
jason@coloradorpm.com



Scan code  
for more  
property  
details



# 9023 Apache Plume Drive, Parker, CO 80134 – 1st Floor



GROSS INTERNAL AREA  
FLOOR 1: 676 sq. ft., FLOOR 2: 700 sq. ft.  
EXCLUDED AREAS: , GARAGE: 208 sq. ft.  
PATIO: 48 sq. ft.  
TOTAL: 1376 sq. ft.  
SIZES AND DIMENSIONS ARE APPROXIMATE, ACTUAL MAY VARY.



Disclaimer: Sizes and Dimensions are Approximate, Actual May Vary.

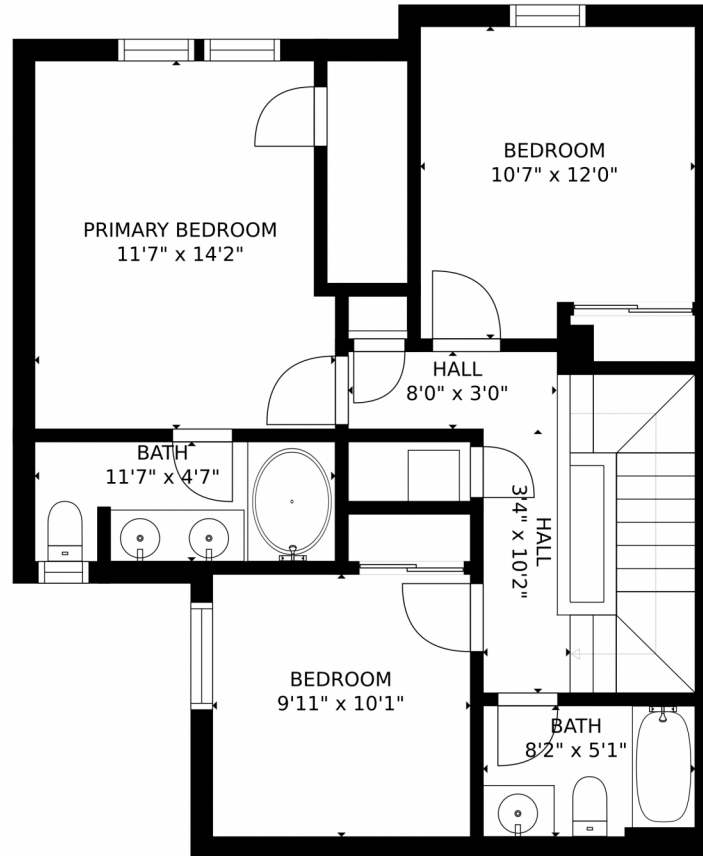


**Jason Cassidy**  
720-220-6964  
jason@coloradorpm.com



Scan code for more property details





GROSS INTERNAL AREA  
FLOOR 1: 676 sq. ft., FLOOR 2: 700 sq. ft.  
EXCLUDED AREAS: , GARAGE: 208 sq. ft.  
PATIO: 48 sq. ft.  
TOTAL: 1376 sq. ft.  
SIZES AND DIMENSIONS ARE APPROXIMATE, ACTUAL MAY VARY.



Disclaimer: Sizes and Dimensions are Approximate, Actual May Vary.



**Jason Cassidy**  
720-220-6964  
jason@coloradorpm.com



# 9023 Apache Plume Drive, Parker, CO 80134 – All Floors



GROSS INTERNAL AREA  
FLOOR 1: 676 sq. ft., FLOOR 2: 700 sq. ft.  
EXCLUDED AREAS: , GARAGE: 208 sq. ft.  
PATIO: 48 sq. ft.  
TOTAL: 1376 sq. ft.  
SIZES AND DIMENSIONS ARE APPROXIMATE, ACTUAL MAY VARY.



Disclaimer: Sizes and Dimensions are Approximate, Actual May Vary.



**Jason Cassidy**  
720-220-6964  
jason@coloradorpm.com

