



Single Family



6267 SQFT



4 Beds



4/1 Baths



3 Car



0.79 Acre

PROPERTY DETAILS

This home exudes ease of living. With a lovely open feel, great flow and design, spacious rooms and high-end finishes, this home will fit any lifestyle. The true chef's kitchen features high end appliances include Sub-Zero refrigerator, 6-burner gas stove, two dishwashers, huge walk-in pantry, and wine chiller with bar/coffee station. This will be the heart of your home with the granite island with seating and a large breakfast bar with prep sink, all looking into the spacious family room with wonderful stone fireplace and hearth. In addition, you will find a sunny breakfast nook. Walk out to the large south-facing deck overlooking the ample .79-acre flat corner lot. Also conveniently on the main level is a large office with high-speed internet. The main floor laundry/mud room is ideal and just steps from the kitchen. The home boasts a gorgeous living room with palladium windows and doors leading to a tranquil patio, and a marble fireplace. The dining room features coffered ceiling and lots of room for even the largest of dinner parties. Up the grand staircase you will also find a great layout with the primary suite and two additional bedrooms both with walk in closets and ensuite bathrooms. The spacious primary suite is a dream with gas fireplace, private deck, walk in closet and lovely seating area. The sizable primary bathroom offers double vanities, luxurious jetted tub, steam shower and closet for a stackable washer and dryer. And there's more...a fabulous lower level with



Pandora & John Erlandson

303-888-6298

pandora@pandorajohnproperties.com

<https://www.pandorajohnproperties.com>

Scan code
for more
property
details



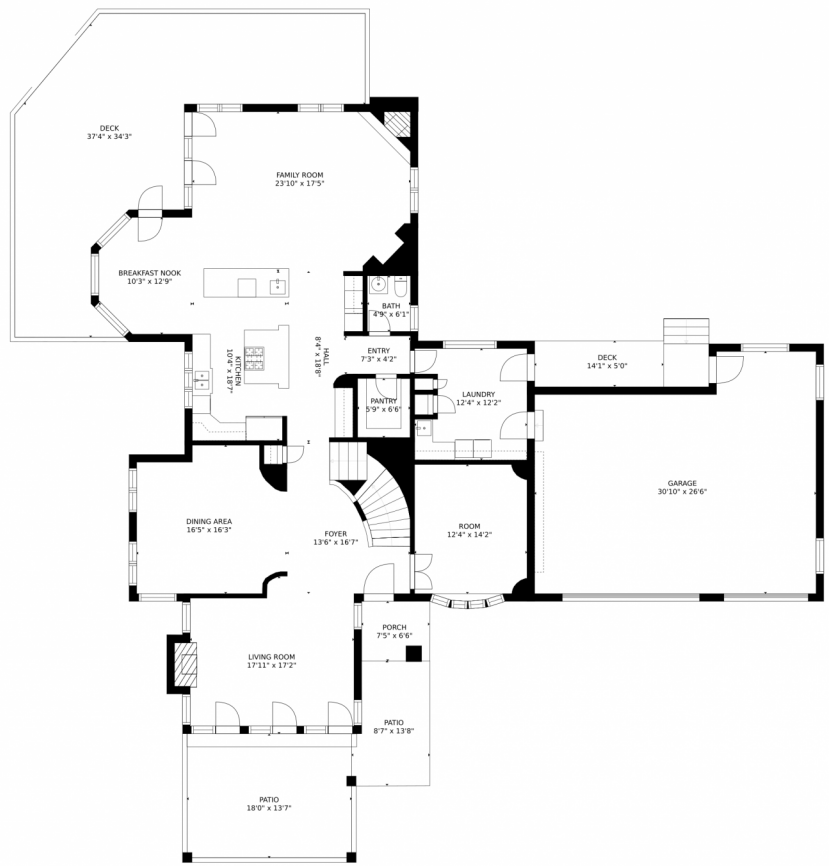
huge walk-out recreation room with fireplace, bonus room that makes another office, craft, or media room, and additional space for work outs. A charming 4th bedroom, full bathroom and a storage area complete the lower level. The 3-car garage is terrific with floor coating, sharp looking built-in cabinetry and has extra room for a workshop space. There is also a fenced portion of the backyard, and an electric dog fence. All this, and in the coveted Ridge community, which is incredibly close to schools, shopping, hiking and all the amenities Evergreen offers. And just 18 minutes to metro Denver. This home truly has it all!



Pandora & John Erlandson
303-888-6298
pandora@pandorajohnproperties.com
<https://www.pandorajohnproperties.com>



1581 Blakcomb Court, Evergreen, CO 80439 – Main Level



GROSS INTERNAL AREA
FLOOR 1: 2040 sq. ft. FLOOR 2: 2082 sq. ft.
FLOOR 3: 1934 sq. ft. EXCLUDED AREAS:
PATIO: 412 sq. ft. GARAGE: 723 sq. ft.
DECK: 784 sq. ft. PORCH: 49 sq. ft.
BALCONY: 76 sq. ft.
TOTAL: 6055 sq. ft.

MEASUREMENTS ARE CALCULATED BY CUBICASA TECHNOLOGY. DEEMED HIGHLY RELIABLE BUT NOT GUARANTEED.



Disclaimer: Sizes and Dimensions are Approximate, Actual May Vary.



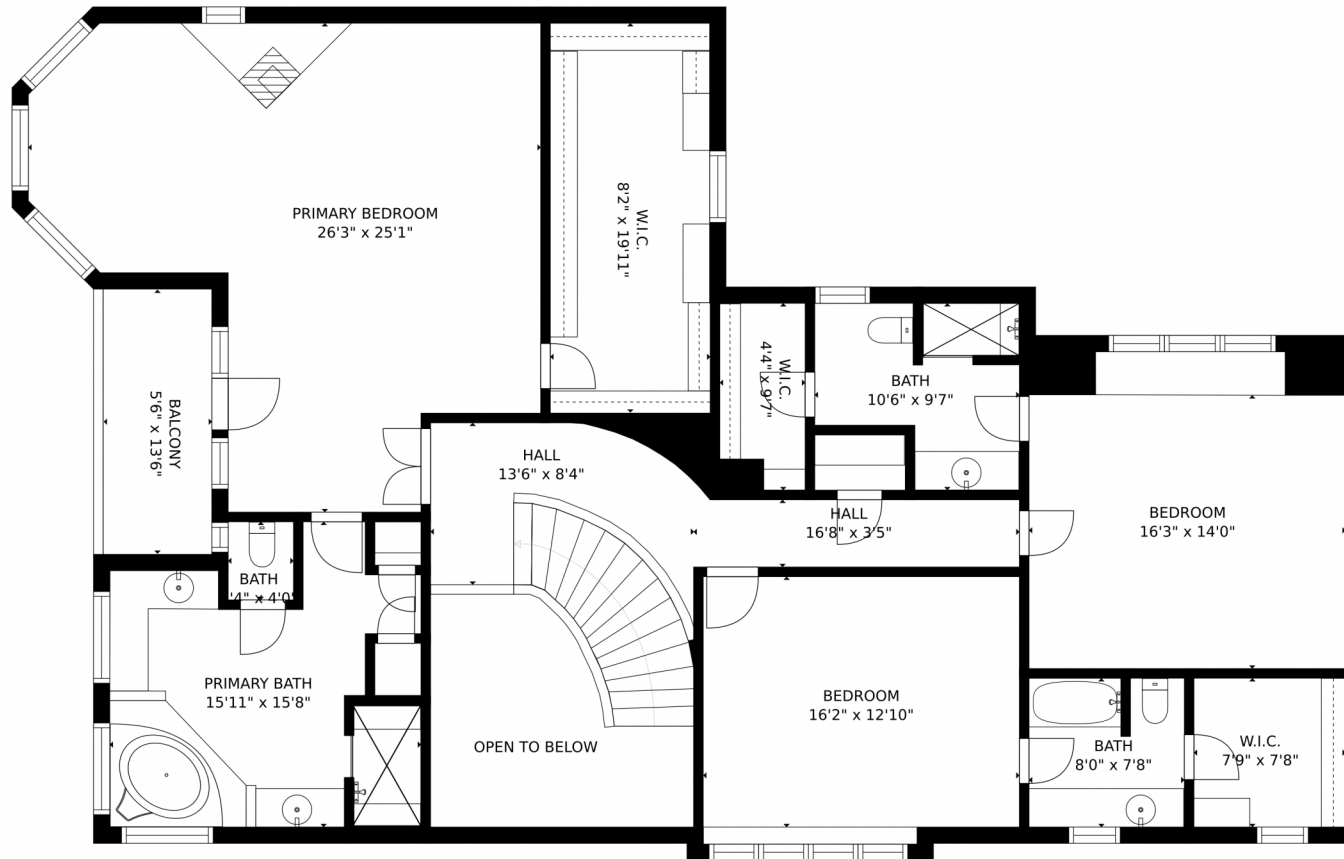
Pandora & John Erlandson
303-888-6298
pandora@pandorajohnproperties.com
<https://www.pandorajohnproperties.com>



Scan code
for more
property
details



1581 Blakcomb Court, Evergreen, CO 80439 – 2nd Level



GROSS INTERNAL AREA
FLOOR 1: 2040 sq. ft. FLOOR 2: 2082 sq. ft.
FLOOR 3: 1934 sq. ft. EXCLUDED AREAS:
PATIO: 412 sq. ft. GARAGE: 723 sq. ft.
DECK: 784 sq. ft. PORCH: 49 sq. ft.
BALCONY: 76 sq. ft.
TOTAL: 6055 sq. ft.

MEASUREMENTS ARE CALCULATED BY CUBICASA TECHNOLOGY. DEEMED HIGHLY RELIABLE BUT NOT GUARANTEED.

Disclaimer: Sizes and Dimensions are Approximate, Actual May Vary.



Pandora & John Erlandson

303-888-6298

pandora@pandorajohnproperties.com

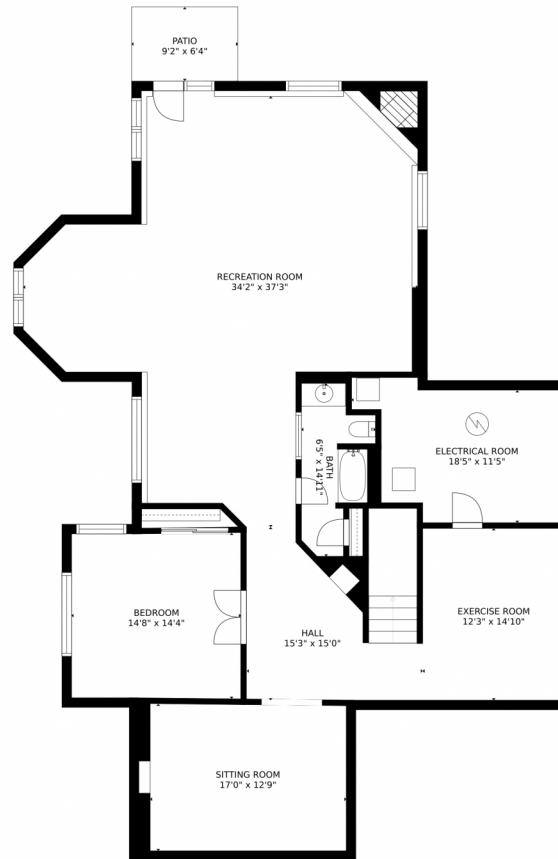
<https://www.pandorajohnproperties.com>



Scan code
for more
property
details



1581 Blakcomb Court, Evergreen, CO 80439 – Lower Level



GROSS INTERNAL AREA
FLOOR 1: 2040 sq. ft. FLOOR 2: 2082 sq. ft.
FLOOR 3: 1934 sq. ft. EXCLUDED AREAS:
PATIO: 412 sq. ft. GARAGE: 723 sq. ft.
DECK: 784 sq. ft. PORCH: 49 sq. ft.
BALCONY: 76 sq. ft.
TOTAL: 6055 sq. ft.

MEASUREMENTS ARE CALCULATED BY CUBICASA TECHNOLOGY. DEEMED HIGHLY RELIABLE BUT NOT GUARANTEED.



Disclaimer: Sizes and Dimensions are Approximate, Actual May Vary.



Pandora & John Erlandson

303-888-6298

pandora@pandorajohnproperties.com

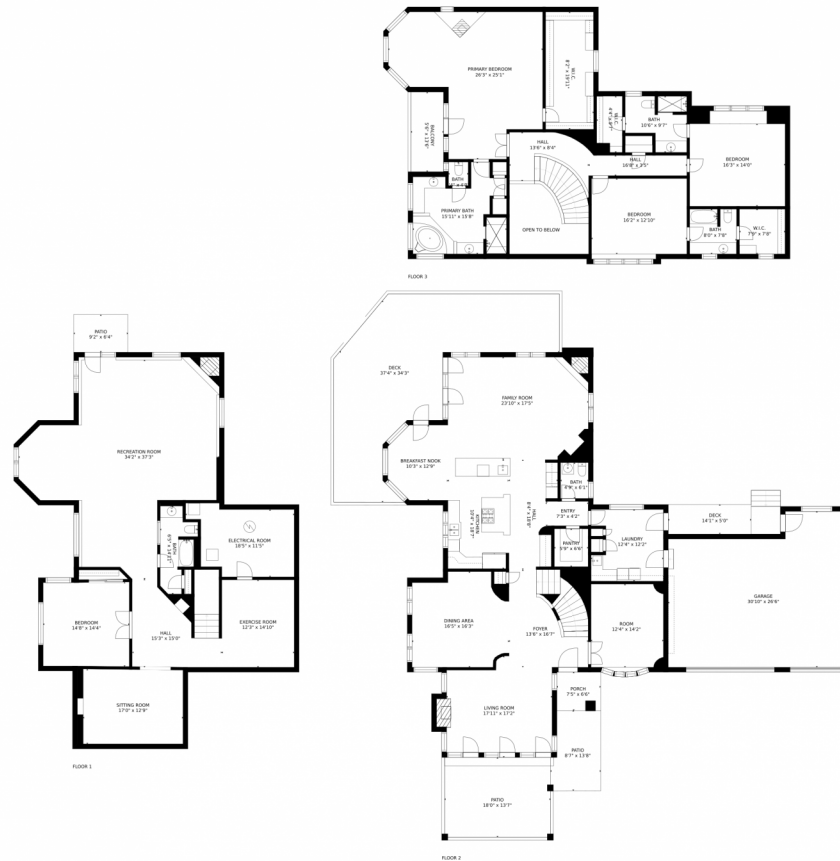
<https://www.pandorajohnproperties.com>



Scan code
for more
property
details



1581 Blakcomb Court, Evergreen, CO 80439 – All Levels



GROSS INTERNAL AREA
 FLOOR 1: 2040 sq. ft. FLOOR 2: 2082 sq. ft
 FLOOR 3: 1934 sq. ft. EXCLUDED AREAS:
 PATIO: 412 sq. ft. GARAGE: 723 sq. ft
 DECK: 784 sq. ft. PORCH: 49 sq. ft
 BALCONY: 76 sq. ft
 TOTAL: 6055 sq. ft

MEASUREMENTS ARE CALCULATED BY CUBICASA TECHNOLOGY. DEEMED HIGHLY RELIABLE BUT NOT GUARANTEED.



Disclaimer: Sizes and Dimensions are Approximate, Actual May Vary.



Pandora & John Erlandson
 303-888-6298
 pandora@pandorajohnproperties.com
<https://www.pandorajohnproperties.com>



Scan code
 for more
 property
 details

