



10118 Bluffmont Lane
 Lone Tree, CO 80124
 COMMUNITY: Ridgeway

MLS # 4016696
 PRICE \$680,000



Condominium



1980 SQFT



2 Beds



2/1 Baths



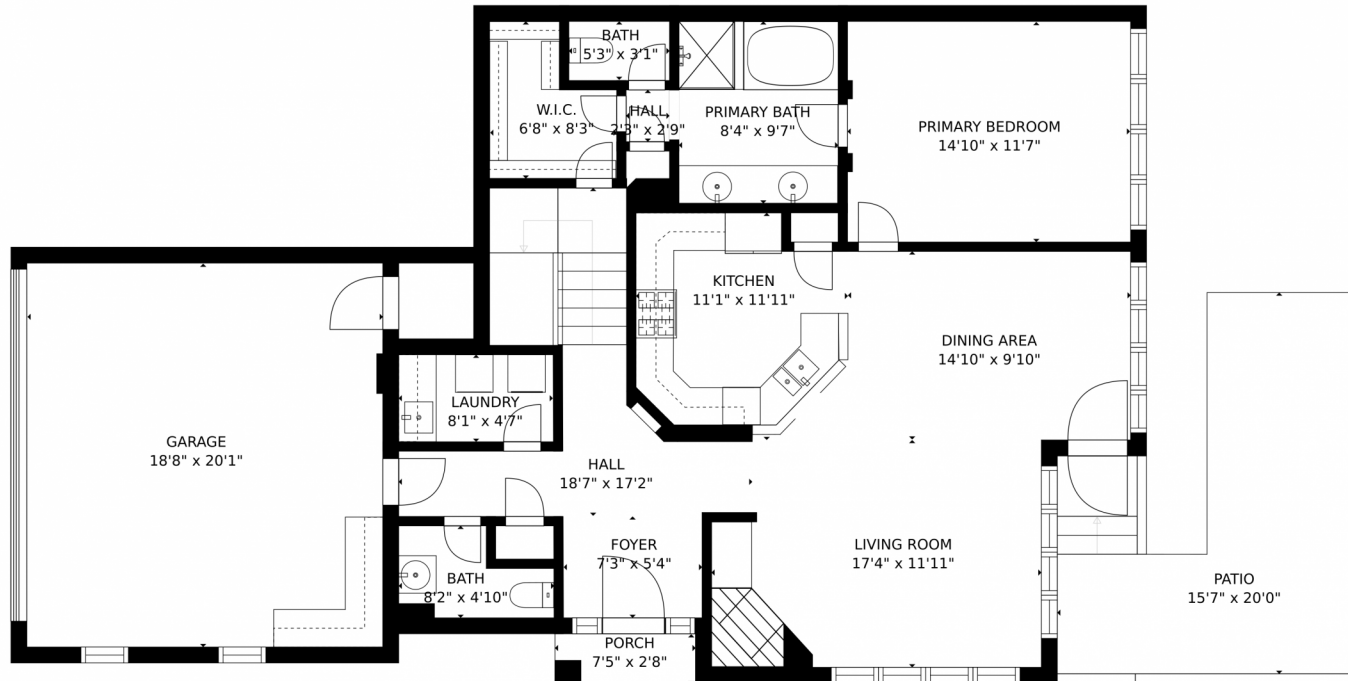
2 Car

Deborah Rohleder
 303-521-6302
 mbredstar@aol.com



Scan code
 for more
 property
 details





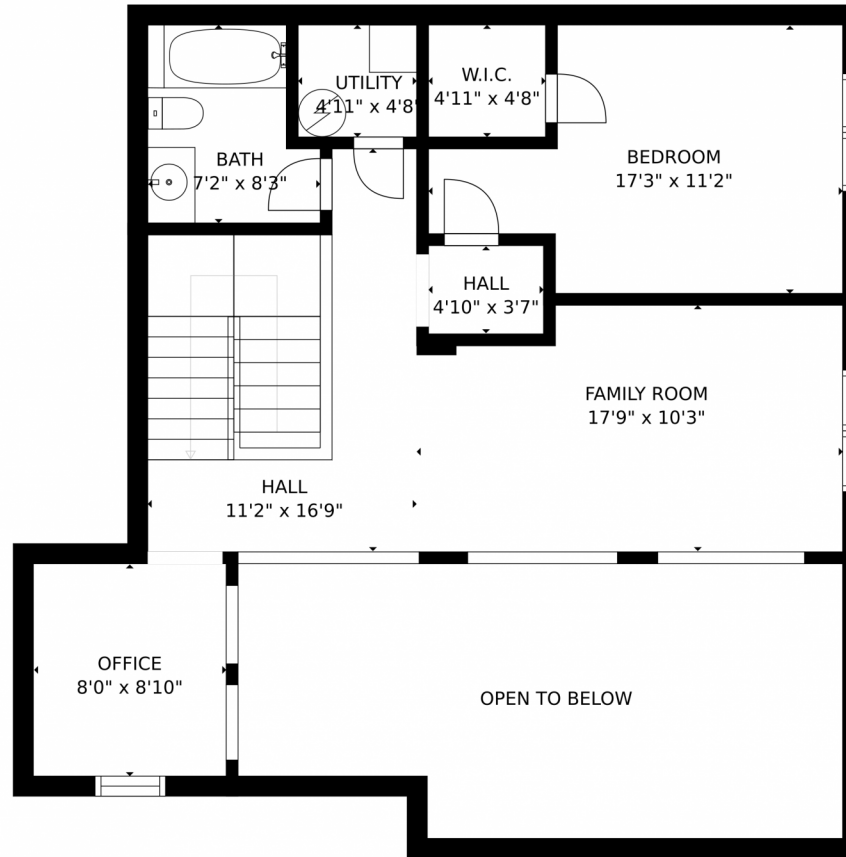
GROSS INTERNAL AREA
FLOOR 1: 1136 sq. ft, FLOOR 2: 725 sq. ft
EXCLUDED AREAS: GARAGE: 376 sq. ft
PATIO: 225 sq. ft, PORCH: 20 sq. ft
TOTAL: 1861 sq. ft
SIZES AND DIMENSIONS ARE APPROXIMATE, ACTUAL MAY VARY.



Disclaimer: Sizes and Dimensions are Approximate, Actual May Vary.



10118 Bluffmont Lane, Lone Tree, CO 80124 – 2nd Level



GROSS INTERNAL AREA
FLOOR 1: 1136 sq. ft, FLOOR 2: 725 sq. ft
EXCLUDED AREAS: , GARAGE: 376 sq. ft
PATIO: 225 sq. ft, PORCH: 20 sq. ft
TOTAL: 1861 sq. ft
SIZES AND DIMENSIONS ARE APPROXIMATE, ACTUAL MAY VARY.

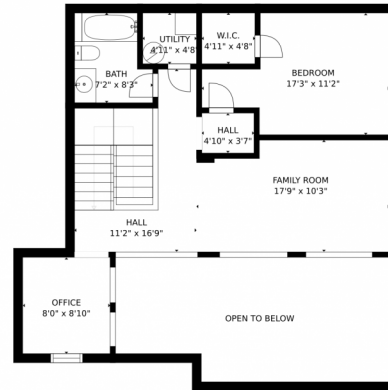


Disclaimer: Sizes and Dimensions are Approximate, Actual May Vary.

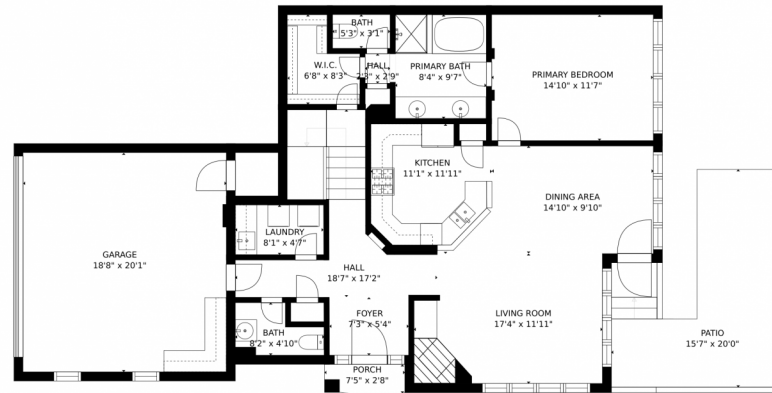
Deborah Rohleder
303-521-6302
mbredstar@aol.com



10118 Bluffmont Lane, Lone Tree, CO 80124 – All Levels



FLOOR 2



FLOOR 1

GROSS INTERNAL AREA
FLOOR 1: 1136 sq. ft, FLOOR 2: 725 sq. ft
EXCLUDED AREAS: , GARAGE: 376 sq. ft
PATIO: 225 sq. ft, PORCH: 20 sq. ft
TOTAL: 1861 sq. ft
SIZES AND DIMENSIONS ARE APPROXIMATE, ACTUAL MAY VARY.



Disclaimer: Sizes and Dimensions are Approximate, Actual May Vary.

Deborah Rohleder
303-521-6302
mbredstar@aol.com

