



Single Family



2248 SQFT



3 Beds



4 Baths



1 Car



0.14 Acre

## PROPERTY DETAILS

Step inside your distinct Tudor home where solid masonry and tradition meets modern and comfortable living. Whether your eye is drawn to the natural sunlight pouring through the rows of windows or the 3 Harmelin light pendants above the centered island, you will certainly not miss the massive amount of modern slate cabinetry along with the brushed birch hardwood floors. The kitchen was designed to be a desired space so that your family and friends could gather in a relaxed and exclusively large space. This Tudor home is further honored with the superior craftsmanship of the custom design Cloe Loire tile to the Victoria II tile in herringbone style, just to name a few. You'll continue to be swept away with this home's charm with its timeless black & white effect as witnessed on the exterior, custom door and window trim, and all 4 bathrooms. Your favorite nook with either be the corner window area in the kitchen for office/home work with your cup of coffee, by the downstairs' custom-built bar mixing your favorite beverage, or by the back door (and the opportunity for a deck) soaking up nature and overlooking the freshly new sod backyard.

This is in a great location with easy access to I-70, City Park, Zoo, Natural History Museum, Golf courses, Park Hill's shops &



**Mike Lynch**  
720-402-4818  
mike@madisonprops.com



Scan code  
for more  
property  
details



restaurants and just 10 minutes from downtown.



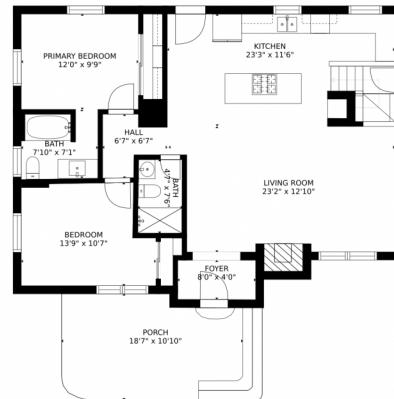
**Mike Lynch**  
720-402-4818  
mike@madisonprops.com



Scan code  
for more  
property  
details



# 3078 Bellaire Street, Denver, CO 80207 – Main Level



GROSS INTERNAL AREA  
FLOOR 1: 978 sq. ft, FLOOR 2: 1156 sq. ft  
EXCLUDED AREAS: , PORCH: 208 sq. ft  
TOTAL: 2133 sq. ft

MEASUREMENTS ARE CALCULATED BY CUBICASA TECHNOLOGY. DEEMED HIGHLY RELIABLE BUT NOT GUARANTEED.

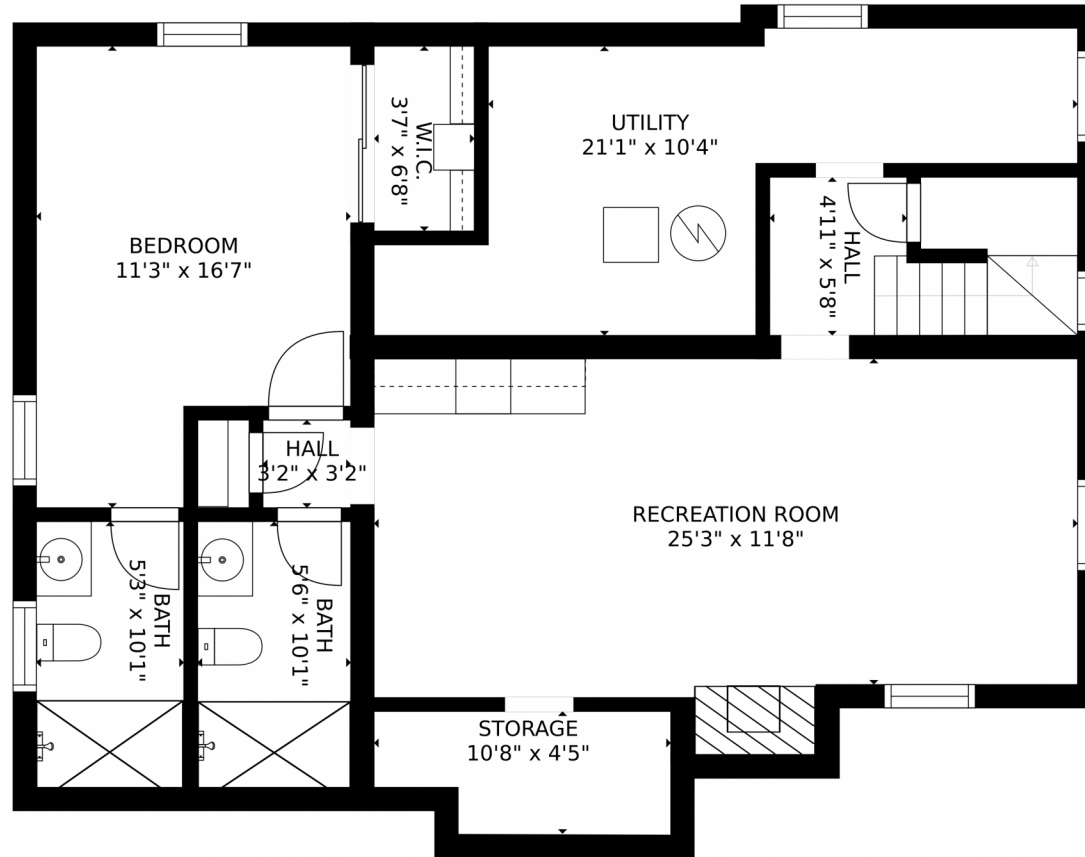


Disclaimer: Sizes and Dimensions are Approximate, Actual May Vary.



**Mike Lynch**  
720-402-4818  
mike@madisonprops.com





GROSS INTERNAL AREA  
FLOOR 1: 978 sq. ft, FLOOR 2: 1156 sq. ft  
EXCLUDED AREAS: , PORCH: 208 sq. ft  
TOTAL: 2133 sq. ft  
MEASUREMENTS ARE CALCULATED BY CUBICASA TECHNOLOGY. DEEMED HIGHLY RELIABLE BUT NOT GUARANTEED.



Disclaimer: Sizes and Dimensions are Approximate, Actual May Vary.



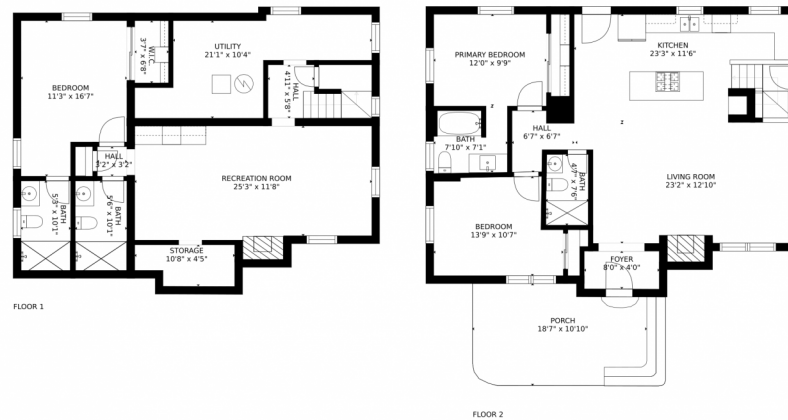
**Mike Lynch**  
720-402-4818  
mike@madisonprops.com



Scan code  
for more  
property  
details



# 3078 Bellaire Street, Denver, CO 80207 — All Levels



GROSS INTERNAL AREA  
FLOOR 1: 978 sq. ft, FLOOR 2: 1156 sq. ft  
EXCLUDED AREAS: , PORCH: 208 sq. ft  
TOTAL: 2133 sq. ft  
MEASUREMENTS ARE CALCULATED BY CUBICASA TECHNOLOGY. DEEMED HIGHLY RELIABLE BUT NOT GUARANTEED.



Disclaimer: Sizes and Dimensions are Approximate, Actual May Vary.



**Mike Lynch**  
720-402-4818  
mike@madisonprops.com

