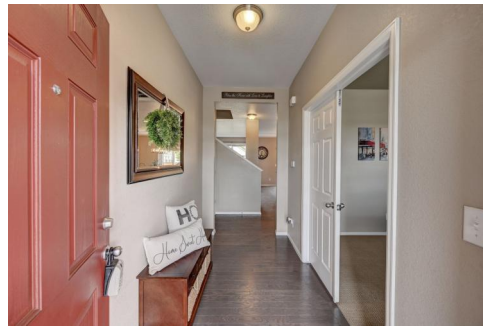




10414 Troy Street
 Commerce City, CO 80022
 COMMUNITY: Turnberry

MLS # 5014361
 PRICE \$650,000



Single Family



3546 SQFT



5 Beds



4 Baths



3 Car



0.24 Acre

PROPERTY DETAILS

Welcome home to the desirable Turnberry community of Commerce City! This sparkling abode offers nearly 3,400 finished square feet of living space and has been the pride of ownership meaning it has been immaculately maintained. This expansive layout offers a wonderful open concept entertainment space at the back of the main level along with a home office and bedroom with full bathroom. Upstairs you will find the glorious owner's suite featuring a spacious seating area and private ensuite bathroom. The upper level is completed by a sunny loft, three additional bedrooms, a secondary full bathroom, and the laundry facility. But wait, there's more... the basement is also fully finished offering a large secondary family room and wetbar along with another bathroom conveniently making for one on each level. You will love the phenomenal outdoor living space that was lovingly designed for your entertainer's heart showcasing a sprawling stamped concrete patio and then a large grass area heading out to your back fence with a stunning gazebo covered paver patio and storage shed off to the corner point all with a partially Xeriscaped design saving you time and money on maintenance. The Turnberry Community began in 2017 with Commerce City's residential expansion and is now home to a robust community complete with a clubhouse and pool where you can make a splash this Summer and meet your new neighbors. Turnberry Park and Elementary School are just a few



Tatyana Sturm
 720-350-5909
 tatyana@exitrealtydtc.com
 https://thestorckteam.com



Scan code
 for more
 property
 details



minutes walk from your new home along with 104th Ave which quickly connects you to Hwy 76 making your commute into Downtown Denver or the DTC a breeze. Opt outside and live your best Colorado lifestyle with the Buffalo Run Golf Course just a short drive away to the North or the sensational Rocky Mountain Arsenal Wildlife Preserve just a few minutes to your South. Every lifestyle amenity is also at your disposal with the grocery store just West on 104th Ave along with all of your favorite fast food chains and of course Walgreen's.



Tatyana Sturm

720-350-5909

tatyana@exitrealtydtc.com

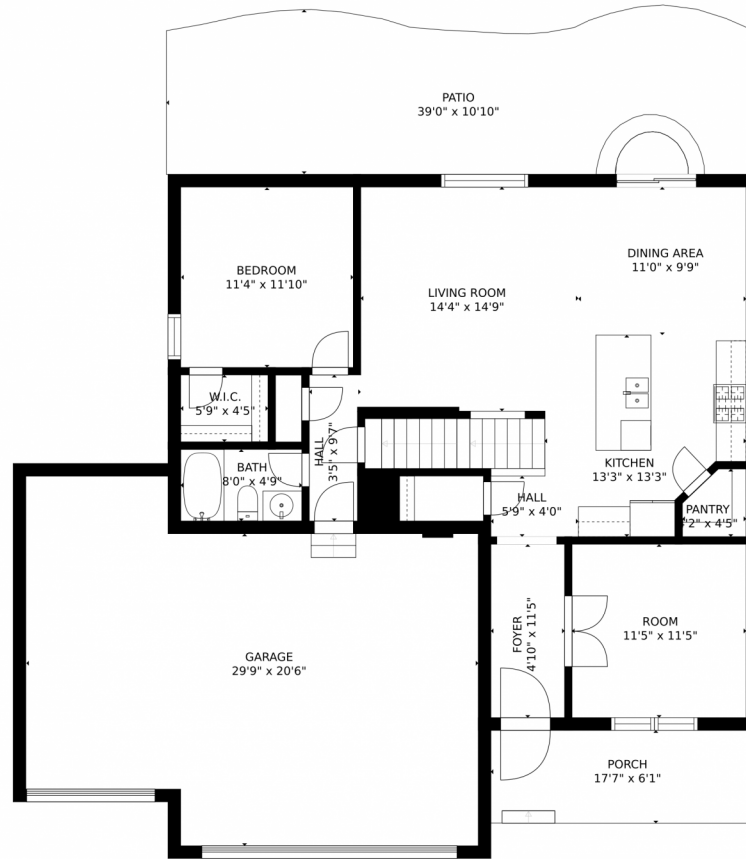
<https://thestorckteam.com>



Scan code
for more
property
details



10414 Troy Street, Commerce City, CO 80022 – Main Level



GROSS INTERNAL AREA
FLOOR 1: 756 sq. ft, FLOOR 2: 1034 sq. ft
FLOOR 3: 1464 sq. ft, EXCLUDED AREAS:
GARAGE: 608 sq. ft, PATIO: 395 sq. ft
PORCH: 105 sq. ft
TOTAL: 3254 sq. ft

MEASUREMENTS ARE CALCULATED BY CUBICASA TECHNOLOGY. DEEMED HIGHLY RELIABLE BUT NOT GUARANTEED.



Disclaimer: Sizes and Dimensions are Approximate, Actual May Vary.



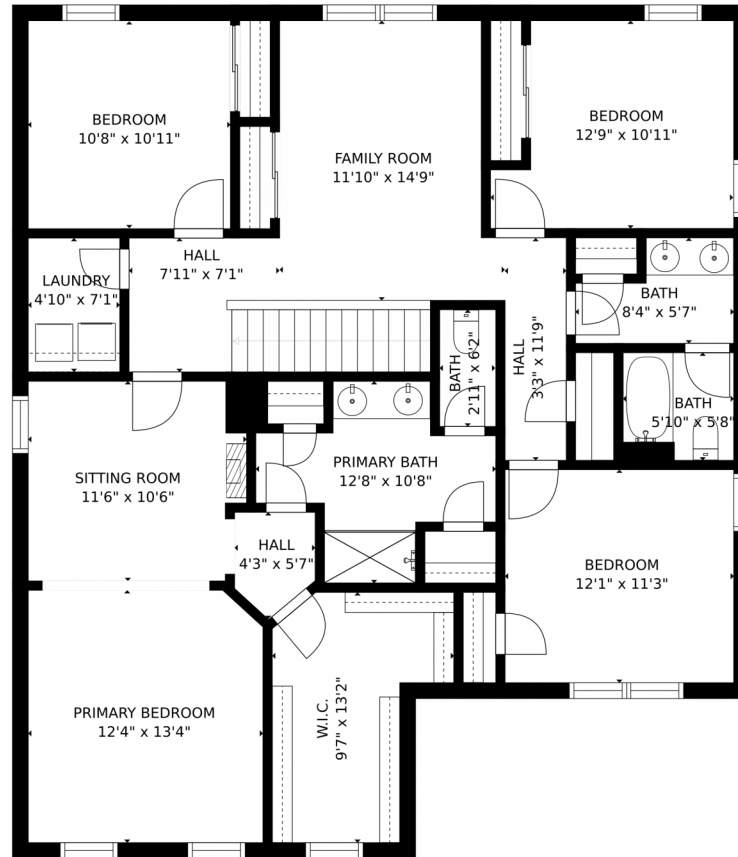
Tatyana Sturm
720-350-5909
tatyana@exitrealttydc.com
<https://thestorckteam.com>



Scan code
for more
property
details



10414 Troy Street, Commerce City, CO 80022 – Upper Level



GROSS INTERNAL AREA
FLOOR 1: 756 sq. ft., FLOOR 2: 1034 sq. ft.
FLOOR 3: 1464 sq. ft., EXCLUDED AREAS:
GARAGE: 608 sq. ft., PATIO: 395 sq. ft.
PORCH: 105 sq. ft.
TOTAL: 3254 sq. ft.

MEASUREMENTS ARE CALCULATED BY CUBICASA TECHNOLOGY. DEEMED HIGHLY RELIABLE BUT NOT GUARANTEED.



Disclaimer: Sizes and Dimensions are Approximate, Actual May Vary.



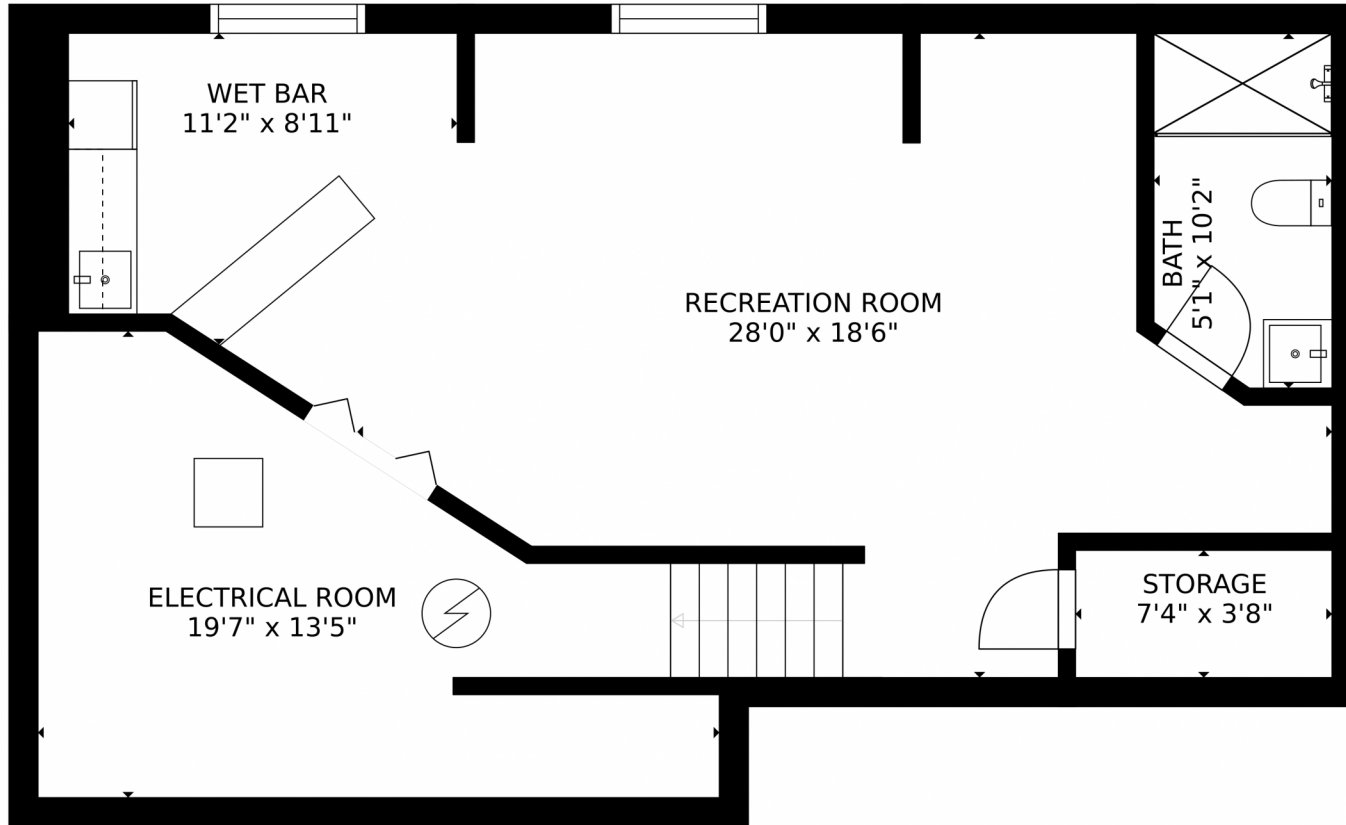
Tatyana Sturm
720-350-5909
tatyana@exitrealtydtc.com
<https://thestorckteam.com>



Scan code
for more
property
details



10414 Troy Street, Commerce City, CO 80022 – Lower Level



GROSS INTERNAL AREA
FLOOR 1: 756 sq. ft, FLOOR 2: 1034 sq. ft
FLOOR 3: 1464 sq. ft, EXCLUDED AREAS:
GARAGE: 608 sq. ft, PATIO: 395 sq. ft
PORCH: 105 sq. ft
TOTAL: 3254 sq. ft

MEASUREMENTS ARE CALCULATED BY CUBICASA TECHNOLOGY. DEEMED HIGHLY RELIABLE BUT NOT GUARANTEED.



Disclaimer: Sizes and Dimensions are Approximate, Actual May Vary.



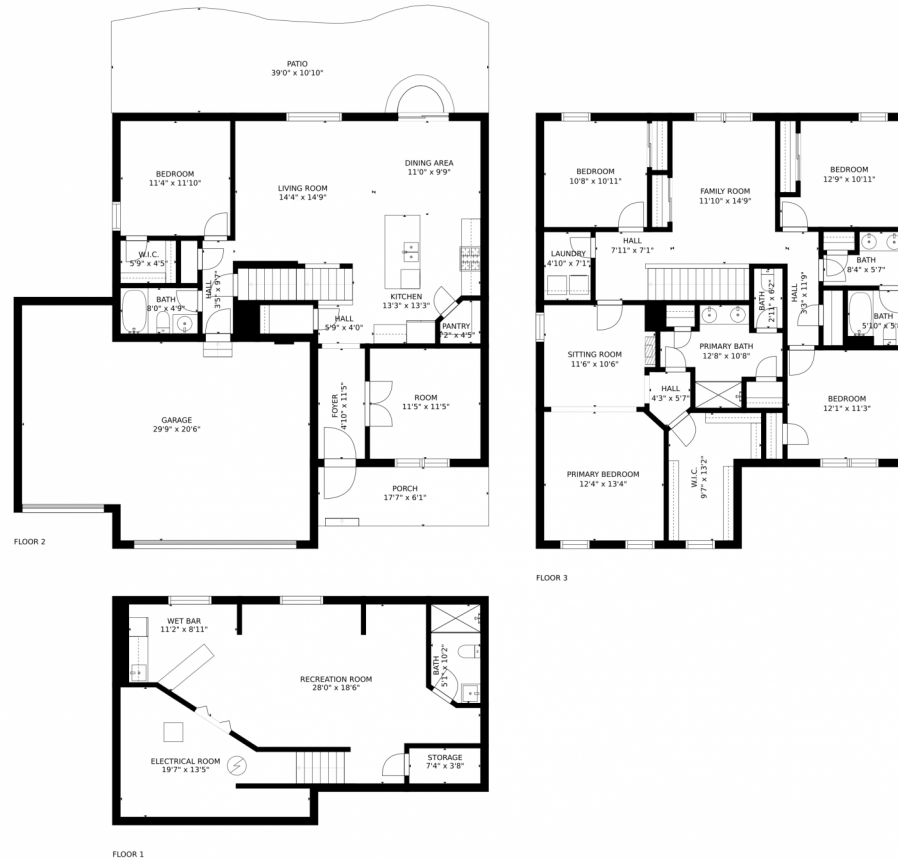
Tatyana Sturm
720-350-5909
tatyana@exitrealttydc.com
<https://thestorckteam.com>



Scan code
for more
property
details



10414 Troy Street, Commerce City, CO 80022 – All Levels



GROSS INTERNAL AREA
 FLOOR 1: 756 sq. ft, FLOOR 2: 1034 sq. ft
 FLOOR 3: 1464 sq. ft, EXCLUDED AREAS:
 GARAGE: 608 sq. ft, PATIO: 395 sq. ft
 PORCH: 105 sq. ft
 TOTAL: 3254 sq. ft

MEASUREMENTS ARE CALCULATED BY CUBICASA TECHNOLOGY. DEEMED HIGHLY RELIABLE BUT NOT GUARANTEED.



Disclaimer: Sizes and Dimensions are Approximate, Actual May Vary.



Tatyana Sturm
 720-350-5909
 tatyana@exitrealttydc.com
<https://thestorckteam.com>



Scan code
 for more
 property
 details

