




1949 Sailfish Place
Lauderdale-by-the-Sea, FL 33308



 Single Family

 2835 SQFT

 3 Beds

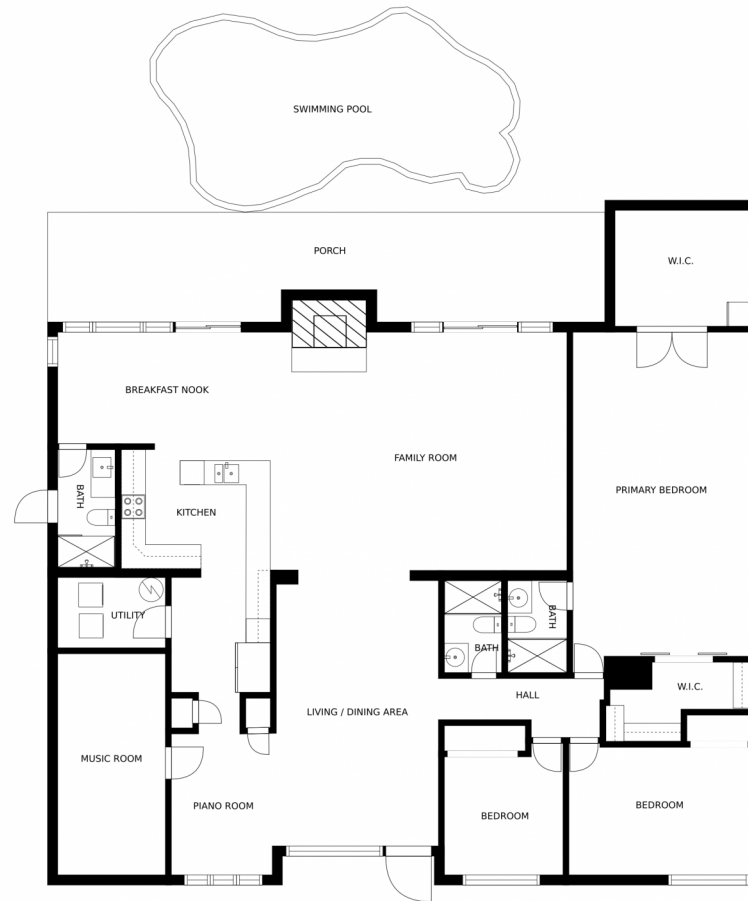
 3 Baths



Ryan J Smith
561-531-4964
ryanjsmithrealtor@gmail.com



1949 Sailfish Place, Lauderdale-by-the-Sea, FL 33308 – Main Floor



MEASUREMENTS ARE CALCULATED BY CUBICASA TECHNOLOGY. DEEMED HIGHLY RELIABLE BUT NOT GUARANTEED.



Disclaimer: Sizes and Dimensions are Approximate, Actual May Vary.



Ryan J Smith
561-531-4964
ryanjsmithrealtor@gmail.com

