



Single Family



1455 SQFT



**Taylor Haas**

303-665-7368

taylorh@coloradorpm.com

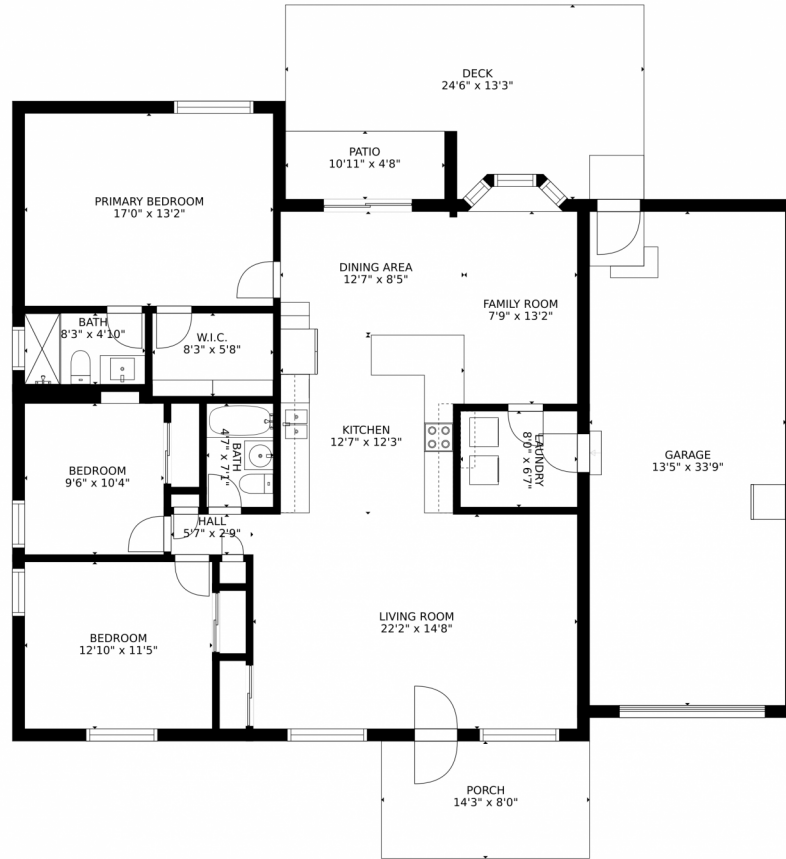
<https://www.coloradorpm.com/available-rental-properties-denv>



Scan code  
for more  
property  
details



# 3001 South Grape Way, Denver, CO 80222 – Main



GROSS INTERNAL AREA  
FLOOR 1: 1458 sq. ft. EXCLUDED AREAS:  
GARAGE: 452 sq. ft., DECK: 266 sq. ft  
PATIO: 51 sq. ft., PORCH: 114 sq. ft  
TOTAL: 1458 sq. ft

MEASUREMENTS ARE CALCULATED BY CUBICASA TECHNOLOGY. DEEMED HIGHLY RELIABLE BUT NOT GUARANTEED.



Disclaimer: Sizes and Dimensions are Approximate, Actual May Vary.



**Taylor Haas**

303-665-7368

taylorh@coloradorpm.com

<https://www.coloradorpm.com/available-rental-properties-denv>



Scan code  
for more  
property  
details

