



14842 Irving Court
 Broomfield, CO 80023
 COMMUNITY: Schultz Estates



Single Family



3565 SQFT



4 Beds



3/1 Baths



2 Car



1.5 Acre



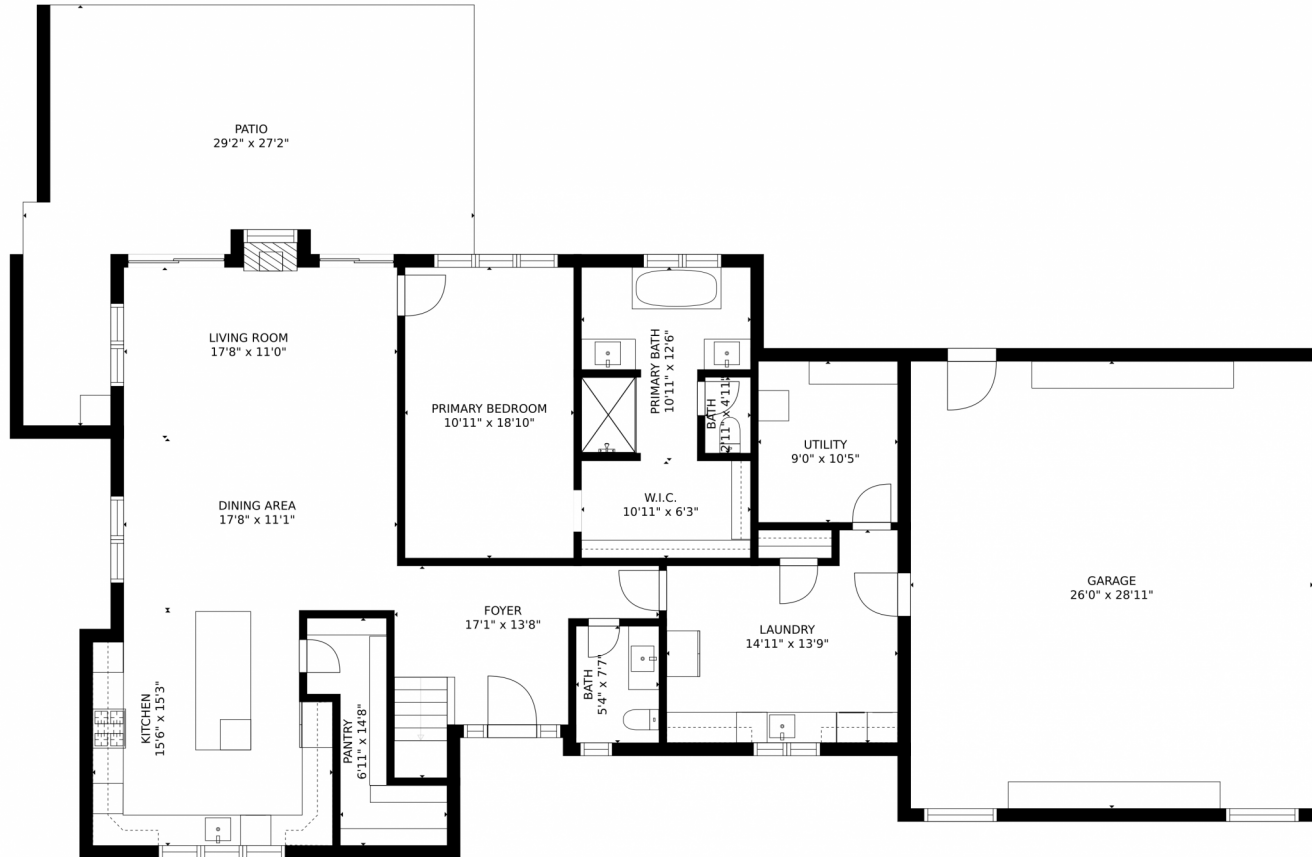
Paul Deakin
 303-587-0043
 deakinrealestate@msn.com



Scan code
 for more
 property
 details



14842 Irving Court, Broomfield, CO 80023 – Main Level



GROSS INTERNAL AREA
FLOOR 1: 1642 sq. ft. FLOOR 2: 1546 sq. ft.
EXCLUDED AREAS: , GARAGE: 752 sq. ft.
PATIO: 503 sq. ft.
TOTAL: 3188 sq. ft.
MEASUREMENTS ARE CALCULATED BY CUBICASA TECHNOLOGY. DEEMED HIGHLY RELIABLE BUT NOT GUARANTEED.



Disclaimer: Sizes and Dimensions are Approximate, Actual May Vary.



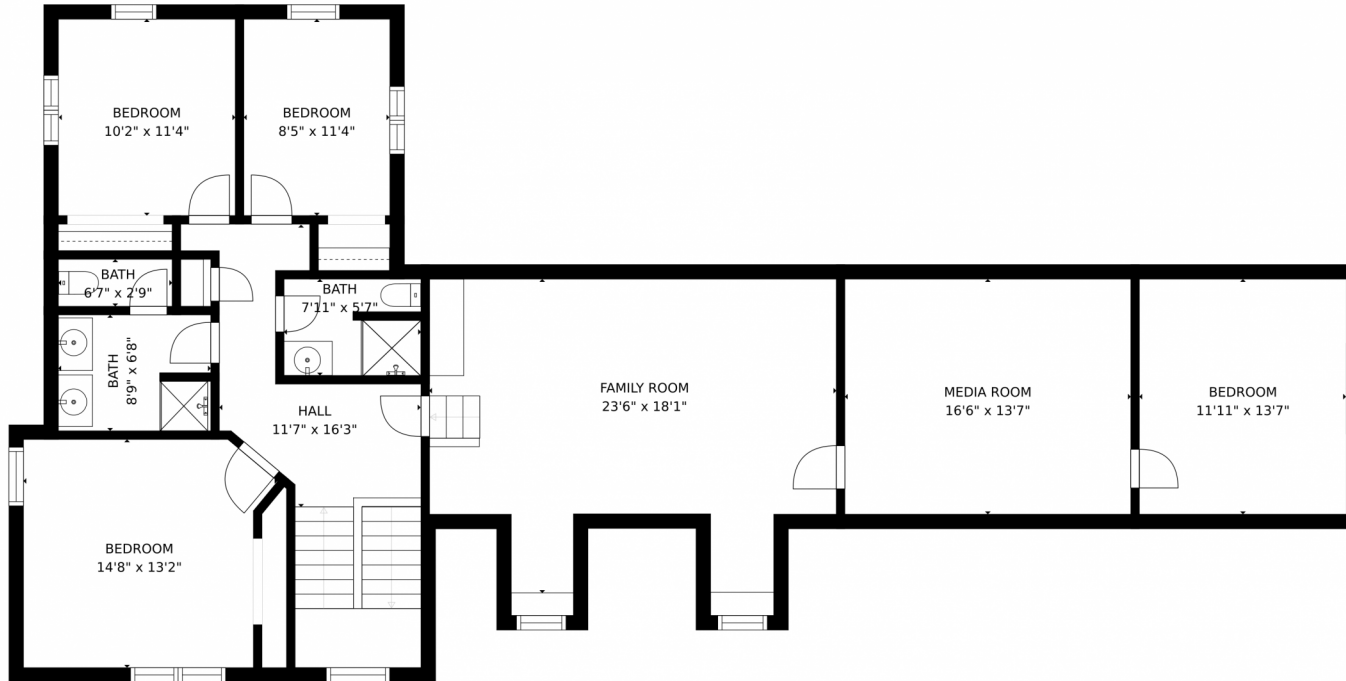
Paul Deakin
303-587-0043
deakinrealestate@msn.com



Scan code for more property details



14842 Irving Court, Broomfield, CO 80023 – Upper Level



GROSS INTERNAL AREA
FLOOR 1: 1642 sq. ft. FLOOR 2: 1546 sq. ft.
EXCLUDED AREAS: GARAGE: 752 sq. ft.
PATIO: 503 sq. ft.
TOTAL: 3188 sq. ft.
MEASUREMENTS ARE CALCULATED BY CUBICASA TECHNOLOGY. DEEMED HIGHLY RELIABLE BUT NOT GUARANTEED.



Disclaimer: Sizes and Dimensions are Approximate, Actual May Vary.

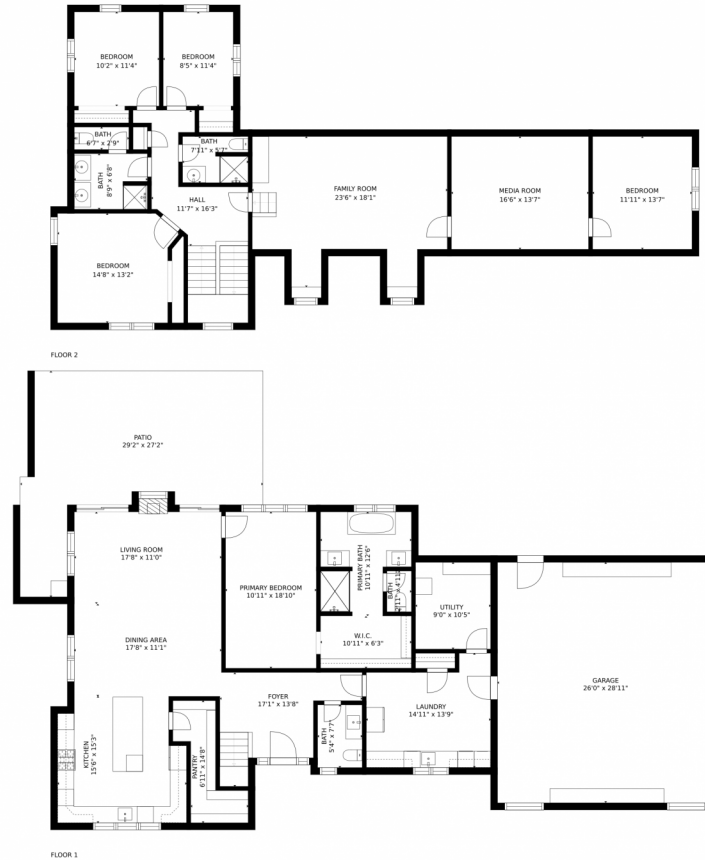


Paul Deakin
303-587-0043
deakinrealestate@msn.com



Scan code
for more
property
details

14842 Irving Court, Broomfield, CO 80023 – All Levels



GROSS INTERNAL AREA
FLOOR 1: 1642 sq. ft, FLOOR 2: 1546 sq. ft
EXCLUDED AREAS: , GARAGE: 752 sq. ft
PATIO: 503 sq. ft
TOTAL: 3188 sq. ft
MEASUREMENTS ARE CALCULATED BY CUBICASA TECHNOLOGY. DEEMED HIGHLY RELIABLE BUT NOT GUARANTEED.



Disclaimer: Sizes and Dimensions are Approximate, Actual May Vary.



Paul Deakin
303-587-0043
deakinrealestate@msn.com

