



Single Family



1181 SQFT



2 Beds



2 Baths



1 Car



0.14 Acre

PROPERTY DETAILS

REDUCED READY TO SELL!!! MOTIVATED SELLER!

Great starter home and such an amazing area with Blue Ribbon Schools and plenty of million dollar plus homes in the area Why rent when you can own this great home? Build equity in such an incredible location!! Such a great neighborhood with Highly coveted Blue Ribbon Schools Cory, Merrill and South.

Updated Cory Merrill Cutie - 2 bedroom and 2 bathroom ranch style solid brick home, with easy access to I-25 close to Wash Park. Come see this great home with an amazing back porch (extra large 24x12) to enjoy coffee in the morning or dinner with friends. Walk into the open living room that flows directly to the dining area and kitchen with beautiful laminate wood floors and open concept. Updated throughout with stainless appliances, granite counters and island with granite, this little beauty offers all of your living on one floor with such an easy flow. Hardwood floors under all wood laminate throughout the home, custom plantation shutters.



Tonie Benetti

303-210-7336

tonie@tbkrealstate.com

<https://www.tbkrealstate.com>



Scan code
for more
property
details



Best comp just down the street 1574 S Elizabeth Street.



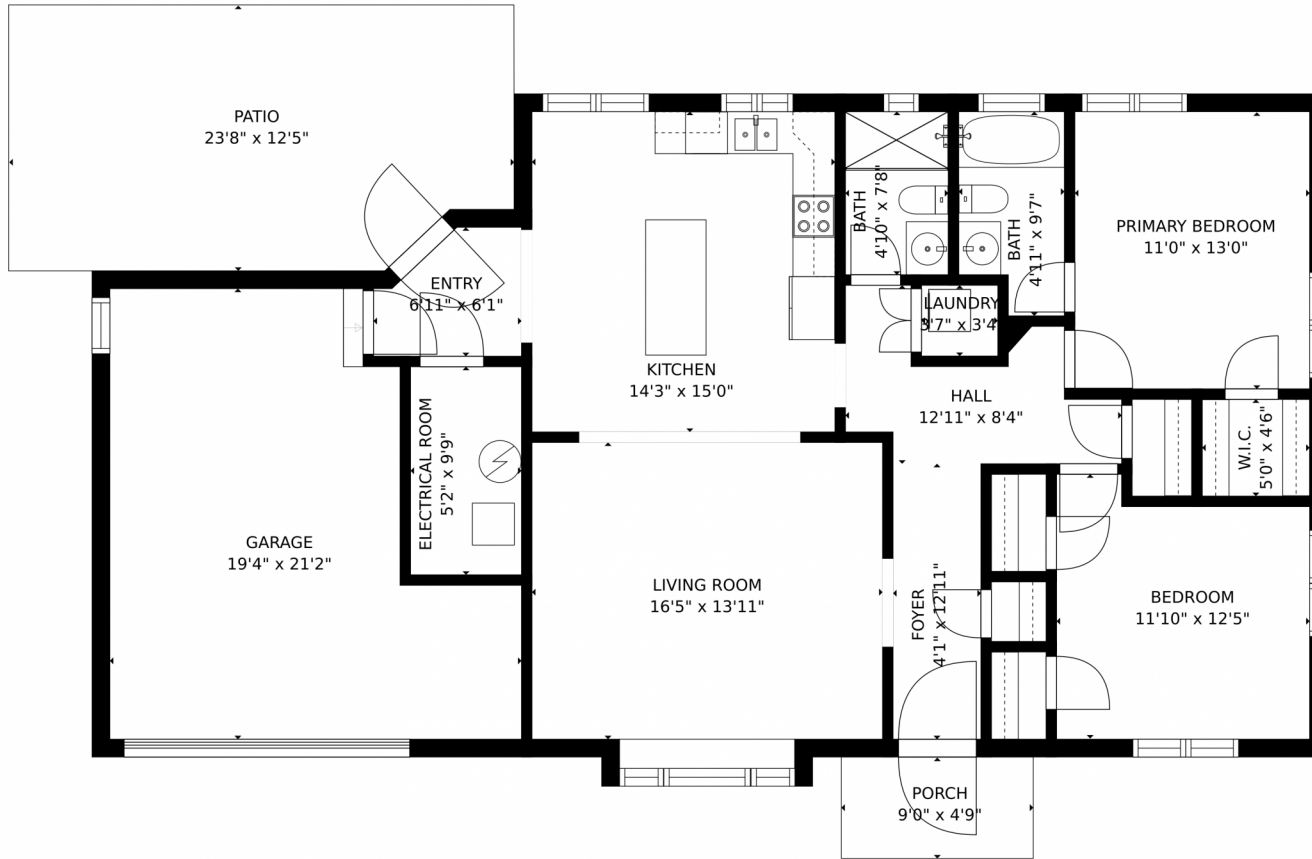
Tonie Benetti
303-210-7336
tonie@tbkrealstate.com
<https://www.tbkrealstate.com>



Scan code
for more
property
details



1705 S Clayton Street, Denver, CO 80210 – Main Level



GROSS INTERNAL AREA
FLOOR 1: 1181 sq. ft. EXCLUDED AREAS:
GARAGE: 322 sq. ft. PATIO: 283 sq. ft
PORCH: 43 sq. ft
TOTAL: 1181 sq. ft

MEASUREMENTS ARE CALCULATED BY CUBICASA TECHNOLOGY. DEEMED HIGHLY RELIABLE BUT NOT GUARANTEED.



Disclaimer: Sizes and Dimensions are Approximate, Actual May Vary.



Tonie Benetti
303-210-7336
tonie@tbkrealstate.com
<https://www.tbkrealstate.com>



Scan code
for more
property
details

