



880 West Chestnut Circle  
Louisville, CO 80027



Single Family



3462 SQFT



4 Beds



3/1 Baths



3 Car



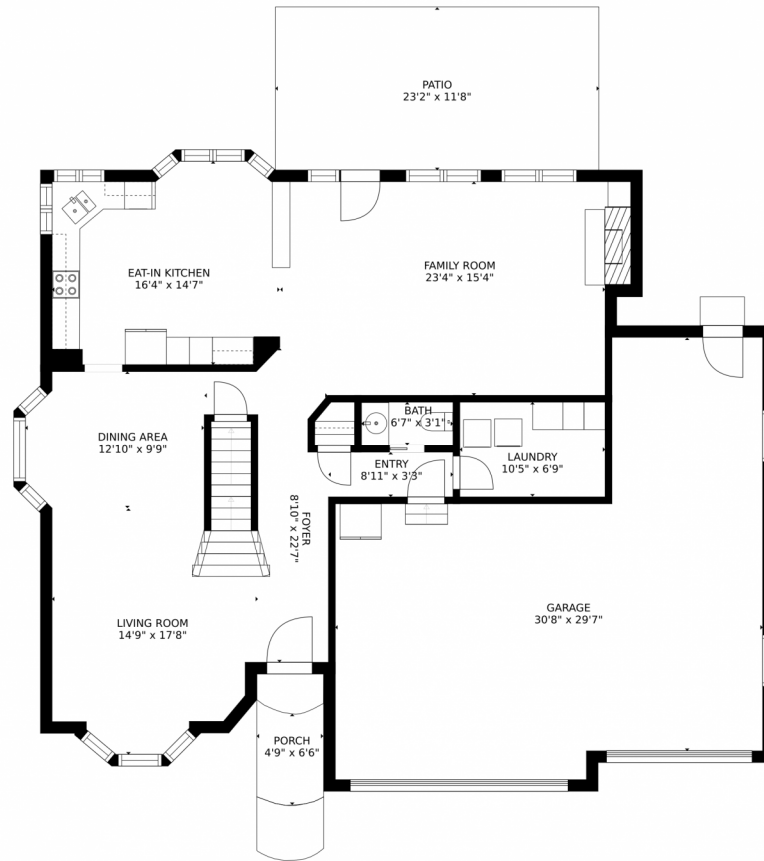
**Paul D. Andrews**  
720-270-1306  
andrews.realtor@gmail.com  
<https://www.greaterdenverhomesite.com/paul-andrews/>



Scan code  
for more  
property  
details



# 880 West Chestnut Circle, Louisville, CO 80027 – Main Level



GROSS INTERNAL AREA  
FLOOR 1: 1031 sq. ft. FLOOR 2: 1238 sq. ft.  
FLOOR 3: 1192 sq. ft. EXCLUDED AREAS:  
GARAGE: 709 sq. ft. PATIO: 271 sq. ft.  
PORCH: 44 sq. ft.  
TOTAL: 3462 sq. ft.

MEASUREMENTS ARE CALCULATED BY CUBICASA TECHNOLOGY. DEEMED HIGHLY RELIABLE BUT NOT GUARANTEED.



Disclaimer: Sizes and Dimensions are Approximate, Actual May Vary.



**Paul D. Andrews**

720-270-1306

[andrews.realtor@gmail.com](mailto:andrews.realtor@gmail.com)

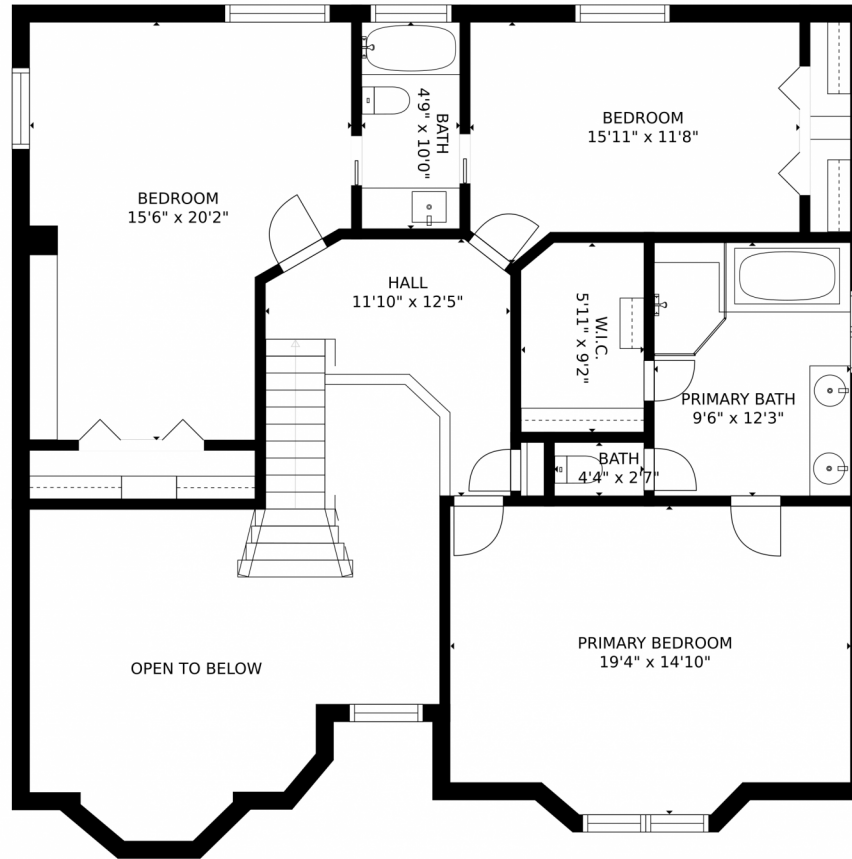
<https://www.greaterdenverhomesite.com/paul-andrews/>



Scan code  
for more  
property  
details



# 880 West Chestnut Circle, Louisville, CO 80027 – Upper Level



GROSS INTERNAL AREA  
FLOOR 1: 1031 sq. ft. FLOOR 2: 1238 sq. ft.  
FLOOR 3: 1192 sq. ft. EXCLUDED AREAS:  
GARAGE: 709 sq. ft. PATIO: 271 sq. ft.  
PORCH: 44 sq. ft.  
TOTAL: 3462 sq. ft.  
MEASUREMENTS ARE CALCULATED BY CUBICASA TECHNOLOGY. DEEMED HIGHLY RELIABLE BUT NOT GUARANTEED.



Disclaimer: Sizes and Dimensions are Approximate, Actual May Vary.

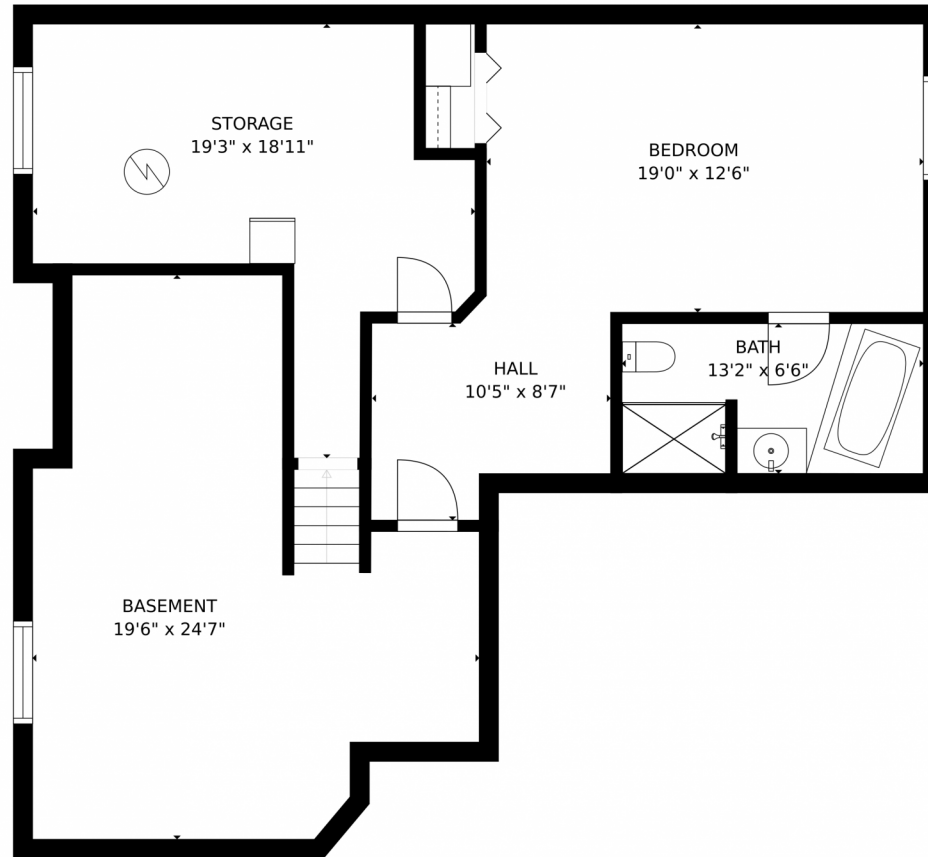


**Paul D. Andrews**  
720-270-1306  
andrews.realtor@gmail.com  
<https://www.greaterdenverhomesite.com/paul-andrews/>





# 880 West Chestnut Circle, Louisville, CO 80027 – Lower Level



GROSS INTERNAL AREA  
FLOOR 1: 1031 sq. ft. FLOOR 2: 1238 sq. ft.  
FLOOR 3: 1192 sq. ft. EXCLUDED AREAS:  
GARAGE: 709 sq. ft. PATIO: 271 sq. ft.  
PORCH: 44 sq. ft.  
TOTAL: 3462 sq. ft.

MEASUREMENTS ARE CALCULATED BY CUBICASA TECHNOLOGY. DEEMED HIGHLY RELIABLE BUT NOT GUARANTEED.



Disclaimer: Sizes and Dimensions are Approximate, Actual May Vary.



**Paul D. Andrews**

720-270-1306

[andrews.realtor@gmail.com](mailto:andrews.realtor@gmail.com)

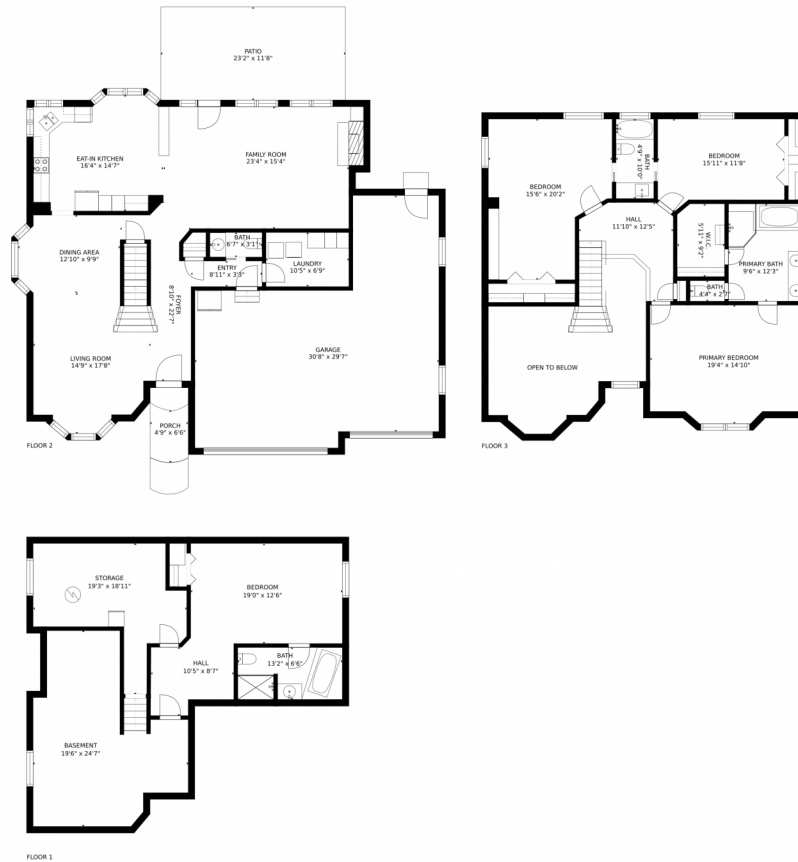
<https://www.greaterdenverhomesite.com/paul-andrews/>



Scan code  
for more  
property  
details



# 880 West Chestnut Circle, Louisville, CO 80027 – All Levels



GROSS INTERNAL AREA  
FLOOR 1: 1031 sq. ft. FLOOR 2: 1238 sq. ft.  
FLOOR 3: 1192 sq. ft. EXCLUDED AREAS:  
GARAGE: 709 sq. ft. PATIO: 271 sq. ft.  
PORCH: 44 sq. ft.  
TOTAL: 3462 sq. ft.

MEASUREMENTS ARE CALCULATED BY CUBICASA TECHNOLOGY. DEEMED HIGHLY RELIABLE BUT NOT GUARANTEED.



Disclaimer: Sizes and Dimensions are Approximate, Actual May Vary.



**Paul D. Andrews**

720-270-1306

[andrews.realtor@gmail.com](mailto:andrews.realtor@gmail.com)

<https://www.greaterdenverhomesite.com/paul-andrews/>



Scan code  
for more  
property  
details

