

COMPASS

6944 Sierra Meadows Drive
Colorado Springs, CO 80908
COMMUNITY: Forest Meadows

MLS # 3670710
PRICE \$550,000



Single Family



3607 SQFT



4 Beds



3/1 Baths



2 Car



0.16 Acre

PROPERTY DETAILS

Welcome home to this gorgeous corner-lot where you'll find yourself in a light-filled oasis w/ high ceilings, an open layout & spacious rooms. Step through the tile entryway & into the huge kitchen boasting an abundance of oak cabinets, a pantry, laminate countertops & counter seating. Prepare meals while family & friends cozy up near the gas fireplace in the spacious living room, complete w/ wood flooring, vaulted ceilings, a ceiling fan, huge windows & a skylight providing natural light. Enjoy your meals either at the long counter w/ bar seating, adjacent breakfast nook or in the formal dining room. You can also use the dining room as a den, office, reading room – whatever you see fit! Continuing on the main floor find a half bath & the spacious primary bedroom w/ large windows, a ceiling fan, sitting area & huge walk-in closet. The ensuite primary bathroom features a double vanity, stand-alone shower & tub. Upstairs you'll be greeted w/ a loft area perfect to use as a home office complete with 2 walls of built-in shelving where you can look down at the living room/kitchen area. Find 2 more light-filled & spacious bedrooms upstairs along w/ a full bathroom. Step downstairs to the fully finished basement which gets plenty of natural light beaming in through egress windows. The huge family room is perfect for relaxing, playing games, entertaining – the possibilities are endless! Also find a bedroom & full bathroom making the basement a great place for guests to reside. One



FELIX LUCK

720-404-0001

felix.luck@compass.com

Scan code
for more
property
details



of the highlights of this home is the amazing home theater, featuring 3 theater seats, a huge projector screen & fun artwork – all included! The charming backyard is fully fenced w/ a lovely garden featuring roses, berry bushes & flagstone. It's the perfect outdoor oasis for enjoying Colorado's abundant sunshine. Located in a beautiful, quiet neighborhood w/ a park, playground & walking trails across the street! With schools & tons of shops & restaurants nearby, this location can't be beat!



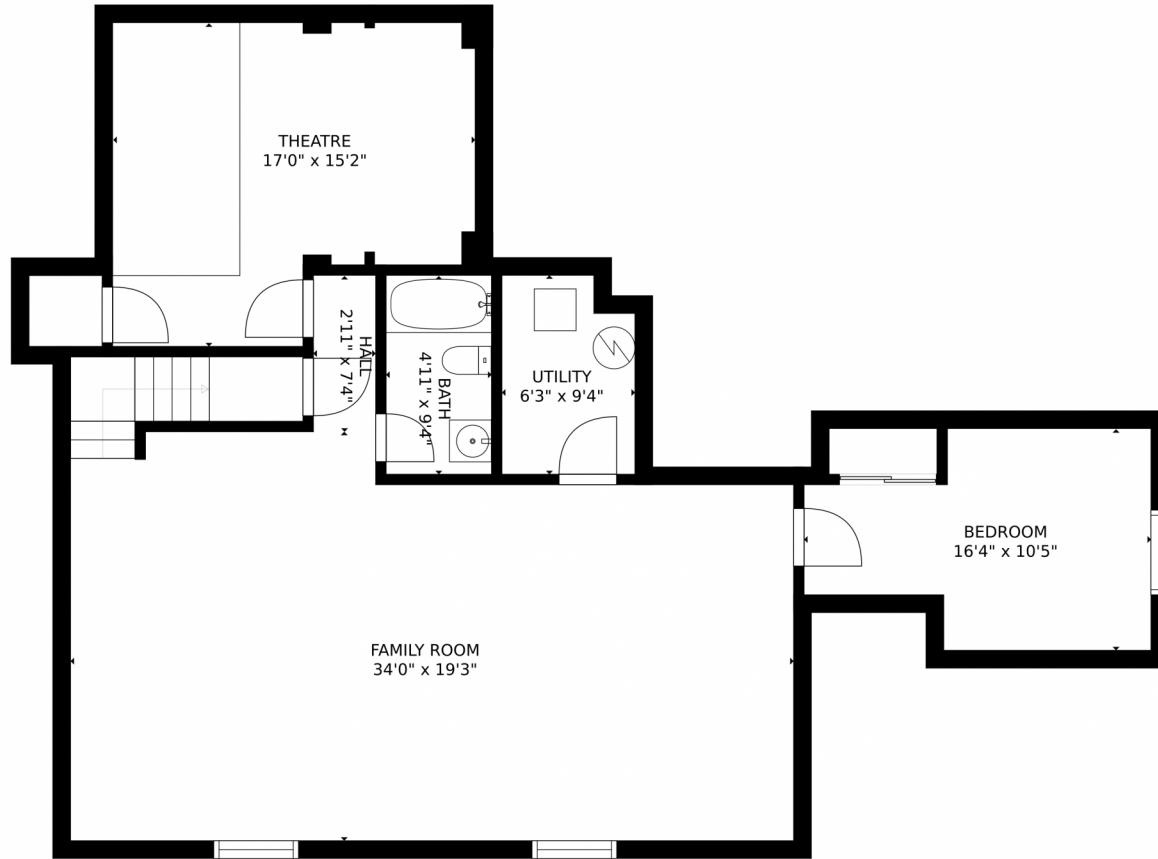
FELIX LUCK
720-404-0001
felix.luck@compass.com



Scan code
for more
property
details



6944 Sierra Meadows Drive, Colorado Springs, CO 80908 – Lower Level



GROSS INTERNAL AREA
FLOOR 1: 1188 sq. ft, FLOOR 2: 1406 sq. ft
FLOOR 3: 594 sq. ft, EXCLUDED AREAS:
GARAGE: 349 sq. ft, PATIO: 72 sq. ft
TOTAL: 3188 sq. ft
MEASUREMENTS CALCULATED BY V1Photos.com ARE DEEMED HIGHLY RELIABLE BUT NOT GUARANTEED.



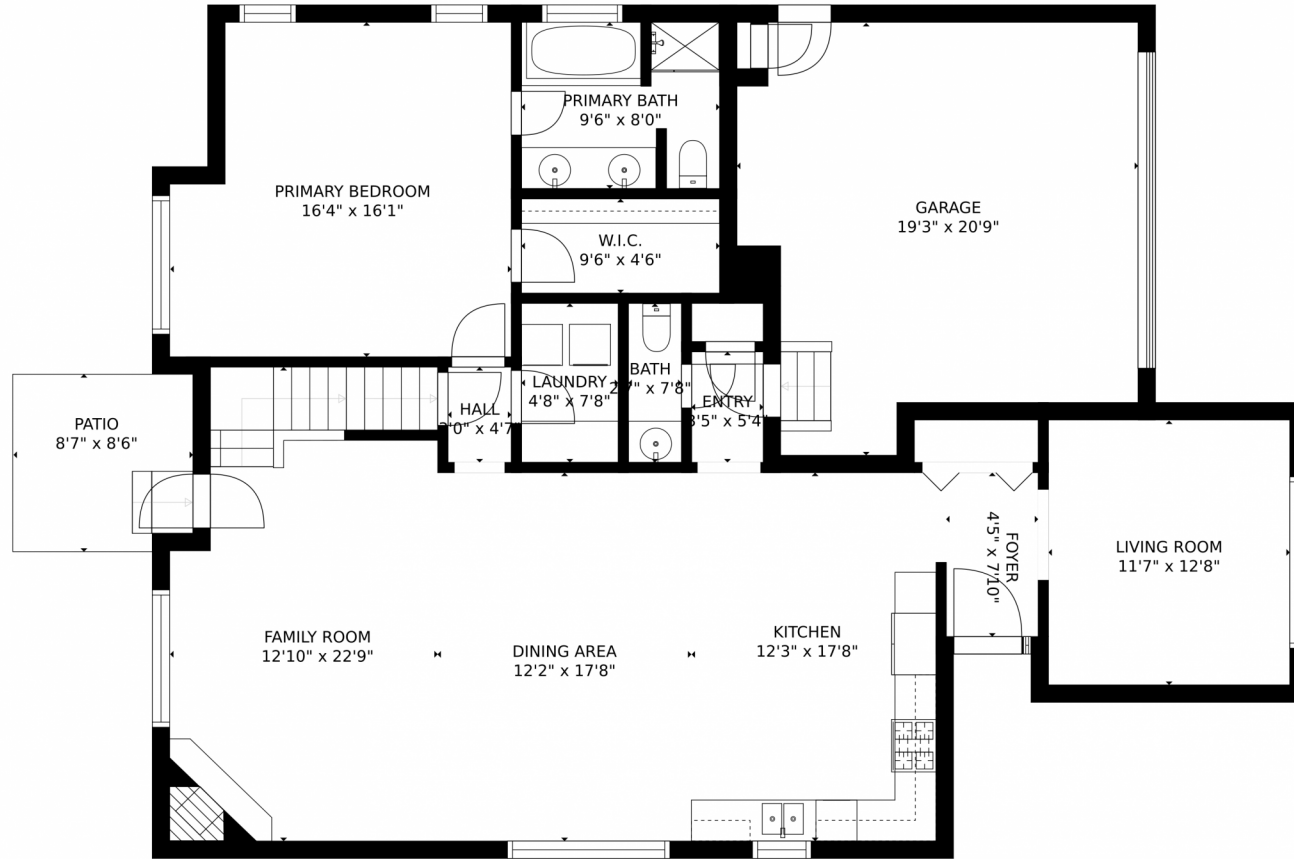
Disclaimer: Sizes and Dimensions are Approximate, Actual May Vary.



FELIX LUCK
720-404-0001
felix.luck@compass.com



6944 Sierra Meadows Drive, Colorado Springs, CO 80908 – Main Level



GROSS INTERNAL AREA
FLOOR 1: 1188 sq. ft., FLOOR 2: 1406 sq. ft.
FLOOR 3: 594 sq. ft., EXCLUDED AREAS:
GARAGE: 349 sq. ft., PATIO: 72 sq. ft.
TOTAL: 3188 sq. ft.
MEASUREMENTS CALCULATED BY V1Photos.COM ARE DEEMED HIGHLY RELIABLE BUT NOT GUARANTEED.



Disclaimer: Sizes and Dimensions are Approximate, Actual May Vary.



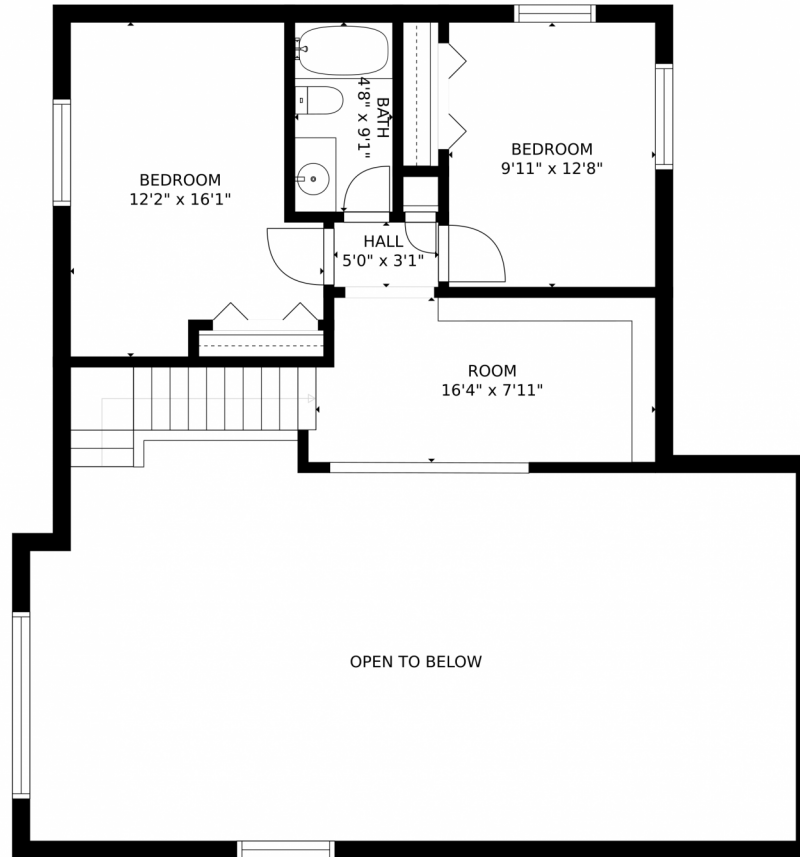
FELIX LUCK
720-404-0001
felix.luck@compass.com



Scan code
for more
property
details



6944 Sierra Meadows Drive, Colorado Springs, CO 80908 – Upper Level



GROSS INTERNAL AREA
FLOOR 1: 1188 sq. ft, FLOOR 2: 1406 sq. ft
FLOOR 3: 594 sq. ft, EXCLUDED AREAS:
GARAGE: 349 sq. ft, PATIO: 72 sq. ft
TOTAL: 3188 sq. ft
MEASUREMENTS CALCULATED BY V1Photos.com ARE DEEMED HIGHLY RELIABLE BUT NOT GUARANTEED.



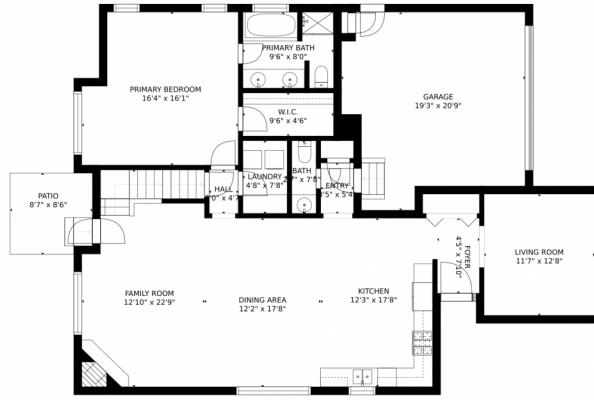
Disclaimer: Sizes and Dimensions are Approximate, Actual May Vary.



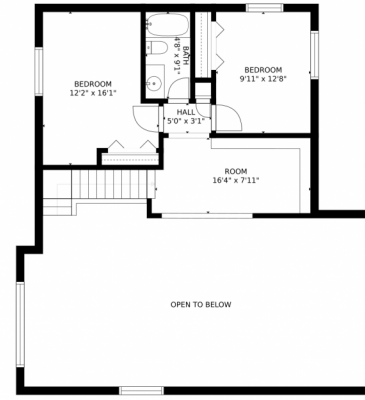
FELIX LUCK
720-404-0001
felix.luck@compass.com



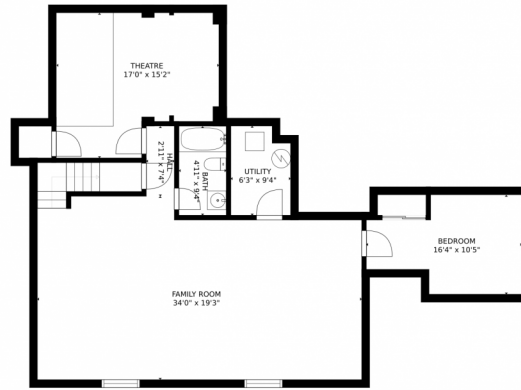
6944 Sierra Meadows Drive, Colorado Springs, CO 80908 – All Levels



FLOOR 2



FLOOR 3



FLOOR 1

GROSS INTERNAL AREA
 FLOOR 1: 1188 sq. ft, FLOOR 2: 1406 sq. ft
 FLOOR 3: 594 sq. ft, EXCLUDED AREAS:
 GARAGE: 349 sq. ft, PATIO: 72 sq. ft
 TOTAL: 3188 sq. ft
 MEASUREMENTS CALCULATED BY V1Photos.com ARE DEEMED HIGHLY RELIABLE BUT NOT GUARANTEED.



Disclaimer: Sizes and Dimensions are Approximate, Actual May Vary.



FELIX LUCK
 720-404-0001
 felix.luck@compass.com



Scan code for more property details